

Table 1. Daily risk assessment disease forecasts for Thursday, Mar. 31 through Wednesday, April 6, 2022*

| No. | County | Region | Anthraco- nose (date, value, level)^ | Green fruit rot (date, precip., level)^ | Bacterial blast (date, value, level)^ | Bacterial spot (date, value, level) | Alternaria leaf spot (date, value, level)^ |
|-----|------------|---------|---|---|---|---|--|
| 1 | Butte | West | 0 | 0 | 0 | 0 | 0 |
| 2 | Colusa | East | 0 | 3-31 (0.25 mm) Low risk | 0 | 0 | 0 |
| 3 | Fresno | East | 3-31 to 4-1 (0.03) Low risk | 0 | 0 | 0 | 0 |
| 4 | Fresno | Central | 3-31 to 4-1 (0.03) Low risk | 0 | 0 | 0 | 0 |
| 5 | Fresno | West | 3-31 to 4-2 (0.03) Low risk | 0 | 0 | 0 | 0 |
| 6 | Kern | Central | 3-31 to 4-1 (0.03) Low risk | 0 | 0 | 0 | 3-31 to 4-2 (7-day index 3,3,2) Low risk |
| 7 | Kern | West | 0 | 0 | 0 | 0 | 0 |
| 8 | Kern | East | 3-31 to 4-1 (0.05) Low risk | 0 | 0 | 3-31 to 4-3 (0.03) Low risk 0 | 0 |
| 9 | Madera | Central | 3-31 to 4-1 (0.08) Low risk | 3-31 (0.06 mm) Low Risk | 0 | 3-31 to 4-3 (0.03) Low risk 0 | 0 |
| 10 | Merced | Central | 3-31 to 4-1 (0.04) Low risk | 0 | 0 | 0 | 0 |
| 11 | Stanislaus | East | 3-31 to 4-2 (0.06) Low risk | 0 | 0 | 3-31 to 4-4 (0.13) Low risk | 0 |
| 12 | Stanislaus | Central | 3-31 to 4-1 (0.03) Low risk | 0 | 0 | 0 | 0 |
| 13 | Stanislaus | West | 3-31 to 4-2 (0.13) Low risk | 0 | 0 | 3-31 to 4-4 (0.4) Low risk | 0 |

* - 7-day forecasts are based on temperature (inside- and outside-canopy measurements), precipitation, and leaf wetness which are powered by the Semios® precision farming platform.

^ - Numerical risk is scaled as follows: 0 = no risk, 1 = action threshold (Note: values may exceed 1 due to hourly accumulations).

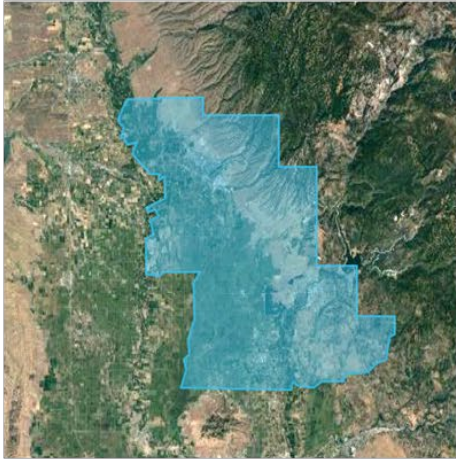
Industry Advisory - Summary for Selected Almond Growing Regions

Precipitation was realized in all regions last week, ranging from 17.45 mm (0.688 in) in Fresno-East to 3.54 mm (0.139 in) in Butte-West between 3-27 and 3-30. Areas that had high rainfall (Fresno-E, -C, Kern-E, -C, -W, Merced-C, and Stanislaus-W, -C) should be scouting for green fruit rot in cultivars with high fruit set. Wetness allows for *Botrytis cinerea* and other fungi to grow from decaying flower parts into healthy fruit. Temperatures were at threshold levels for bacterial spot and anthracnose and the risk is low especially with anthracnose that needs repeated rains for sporulation, dissemination, and infection. With low or no precipitation and moderate temperatures forecasted in the coming week, Alternaria leaf spot, anthracnose, and bacterial spot are at zero to low risk; whereas the risk for bacterial blast is zero for all regions (see Table 1). The website <https://www.ag-radar.com> (password: Almondboard2022) displays actual and forecasted disease risk assessments for each region. Because these are regional forecasts, precipitation may vary with region and differ for the forecasted rainfall. Please check <https://www.ag-radar.com> for up to date daily forecasts. Historical records and experience for specific locations should be considered. This advisory will be updated weekly.

"2022 Fungicide Efficacy Tables" (<http://ipm.ucanr.edu/PDF/PMG/fungicideefficacytiming.pdf>) were posted on 3-21-22.

Fig. 1. Maps of counties and regions.

Butte West



Colusa East



Fresno Central



Fresno East



Fresno West



Fig. 2. Maps of counties and regions.

Kern West



Kern East



Kern Central



Stanislaus Central



Stanislaus East



Stanislaus West

