

**Table 1.** Daily risk assessment disease forecasts for Thursday, April 14 through Wednesday, April 20, 2022\*

| No. | County     | Region  | Anthraco-<br>nose<br>(date, value,<br>level)^           | Bacterial spot<br>(date, value,<br>level)           | Alternaria leaf<br>spot (date,<br>value, level)^ |
|-----|------------|---------|---|---|--|
| 1   | Butte      | West    | 4-15, 4-16, 4-18<br>(0.18, 0.19, 0.23)<br>Moderate risk | 4-15, 4-16, 4-18<br>(0.31, 0.16, 0.41)<br>High risk | 4-20 (1)<br>Low risk                             |
| 2   | Colusa     | East    | Low risk  | 0   | 0  |
| 3   | Fresno     | East    | Low risk  | 0   | 0  |
| 4   | Fresno     | Central | Low risk  | 0   | 0  |
| 5   | Fresno     | West    | Low risk  | 0   | 0  |
| 6   | Kern       | Central | 0   | 0   | 0  |
| 7   | Kern       | West    | 0   | 0   | 0  |
| 8   | Kern       | East    | 0   | 0   | 0  |
| 9   | Madera     | Central | Low risk  | 0   | 0  |
| 10  | Merced     | Central | Low risk  | 0   | 0  |
| 11  | Stanislaus | East    | Low risk  | 0   | 0  |
| 12  | Stanislaus | Central | 0   | 0   | 0  |
| 13  | Stanislaus | West    | Low risk  | 0   | 0  |

\* - 7-day forecasts are based on temperature (inside- and outside-canopy measurements), precipitation, and leaf wetness which are powered by the Semios® precision farming platform.

^ - Numerical risk is scaled as follows: 0 = no risk, 1 = action threshold (Note: values may exceed 1 due to hourly accumulations).

### Industry Advisory - Summary for Selected Almond Growing Regions

Low precipitation was forecasted for Kern-W last week, however, 5.85 mm (0.2 in) of rain and warm temperatures occurred on 4-9 to 4-11, resulting in a risk index of 8.09 for anthracnose. Similarly, although no risk was forecasted for Alternaria leaf spot in Kern-C, 33 h of leaf wetness accumulated between 4-7 and 4-8, resulting in a 7-day risk index maximum of 12 that indicated an infection period. For bacterial spot, no risk was predicted for Kern-W, however, a 7-day index maximum of 9.64 occurred on 4-9 to 4-11, also indicating an infection period. In contrast, a high risk for this disease was forecasted for Butte-W, Fresno-C, and Madera-C, but actual environmental conditions resulted in no or very low risk for these regions.

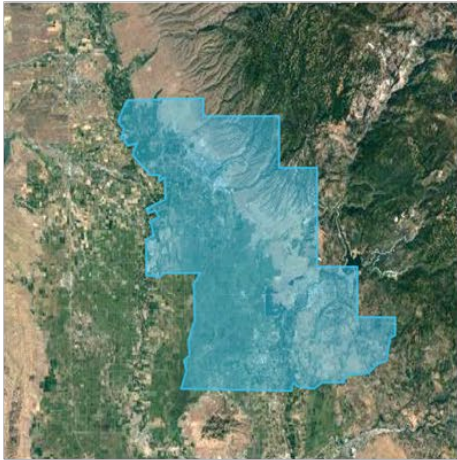
For the coming week, a moderate risk for anthracnose and a high risk for bacterial spot are forecasted for Butte-W (4-15, 4-16, 4-18) due to anticipated precipitation and moderate to warm temperatures (see Table 1). The risk for Alternaria leaf spot, however, is low in Butte-W. For all other regions, no moderate or high risk is forecasted for the three diseases. Low risk is predicted for anthracnose in some regions due to trace amounts of forecasted rainfall and threshold temperatures.

The website <https://www.ag-radar.com> (password: Almondboard2022) displays actual and forecasted disease risk assessments for each region. Because these are regional forecasts, precipitation may vary with region and differ for the forecasted rainfall. Please check <https://www.ag-radar.com> for up to date daily forecasts. Historical records and experience for specific locations should be considered. This advisory will be updated weekly.

"2022 Fungicide Efficacy Tables" (<http://ipm.ucanr.edu/PDF/PMG/fungicideefficacytiming.pdf>) were posted on 3-21-22.

Fig. 1. Maps of counties and regions.

Butte West



Colusa East



Fresno Central



Fresno East



Fresno West



Fig. 2. Maps of counties and regions.



Kern West



Kern East



Kern Central



Stanislaus Central



Stanislaus East



Stanislaus West

