

Almond Board of California - Disease Forecasts in cooperation with the University of California

Table 1. Daily risk assessment disease forecasts for Thursday, May 5 through Wednesday, May 11, 2022*

No.	County	Region	Anthraco ⁿ ose (date, value, level), 5-day index summary (risk) [^]	Bacterial spot (date, value, level), 7-day index summary (risk) [^]	Alternaria leaf spot (date, value, level), 7-day index summary (risk) [^]
1	Butte	West	0	0	5-6, 5-7 (1,1), Low risk; 7-day index increasing from 1 to 2 (Low risk through 5-11)
2	Colusa	East	5-9 (0.09), Low risk; 5-day index increasing to 0.09 (Low risk through 5-11)	5-9 (0.25), Low risk; 7-day index increasing to 0.25 (Low risk through 5-11)	5-6, 5-7 (1,1), Low risk; 7-day index increasing from 1 to 2 (Low risk through 5-11)
3	Fresno	Central	0	0	0
4	Fresno	East	5-5 (0.5), Low risk; 5-day index increasing to 0.5 through 5-9)	5-5 (0.31), Low risk; 7-day index increasing to 0.31 through 5-11)	0
5	Fresno	West	0, Low risk; 5-day index holding from 5-3 to 5-7 at 0.46 (Mod. risk)	0, Low risk but 7-day index holding from 5-3 to 5-9 at 0.84 (High risk)	0
6	Kern	Central	0	0	0, Low risk; 7-day index holding from 5-3 to 5-9 at 1 (Low risk)
7	Kern	East	0	0	0
8	Kern	West	0, Low risk but 5-day index decreasing from 13.82 to 5.62 (High risk for 5-2 to 5-6)	0, Low risk but 7-day index decreasing from 13.4 to 1.35 (High risk for 5-2 to 5-8)	0
9	Madera	Central	0	0	0
10	Merced	Central	0	0	0
11	Stanislaus	Central	0	0	0
12	Stanislaus	East	0	0	0
13	Stanislaus	West	0	0	0

* - 7-day forecasts are based on temperature (inside- and outside-canopy measurements), precipitation, and leaf wetness which are powered by the Semios[®] precision farming platform.

[^] - Numerical risk is scaled as follows: 0 = no risk, 1 = action threshold (Note: values may exceed 1 due to hourly accumulations).

Note: In this updated table, the order of some regions was changed from previous reports to match the RADAR on-line report and to minimize errors in the summary table.

Industry Advisory - Summary for Selected Almond Growing Regions

For the coming week, low to zero risk is forecasted for Alternaria leaf spot, anthracnose, and bacterial spot in all regions (Table 1). The 5-day and 7-day indices are increasing for Alternaria leaf spot in Butte-W, for anthracnose, Alternaria, and bacterial spot in Colusa-E, and for anthracnose and bacterial spot in Fresno-E. The 5-day and 7-day indices are holding or decreasing for anthracnose and bacterial spot in Fresno-W and Kern-W, and for Alternaria leaf spot in Kern-C.

Overall, the forecasts are subjected to the amount and duration of precipitation (leading to leaf wetness) and realized temperatures. Forecasted temperatures are remaining relatively cool (11.1 to 23.3C) in all regions for the next week. Most will not have precipitation except Butte-W (0.8 mm), Colusa-E (0.2 mm) and Fresno-C/-W (<0.04 mm), indicating that the overall disease pressure will be low in most almond growing regions of the state (Table 2).

The website <https://www.ag-radar.com> (password: Almondboard2022) displays actual and forecasted disease risk assessments for each region. Because these are regional forecasts, precipitation may vary with region and differ for the forecasted rainfall. Please check <https://www.ag-radar.com> for up to date daily forecasts. Historical records and experience for specific locations should be considered. This advisory will be updated weekly.

"2022 Fungicide Efficacy Tables" (<http://ipm.ucanr.edu/PDF/PMG/fungicideefficacytiming.pdf>) were posted on 3-21-22. Note: Maps for all regions listed in Tables 1 and 2 are provided in Figs. 1 to 3.

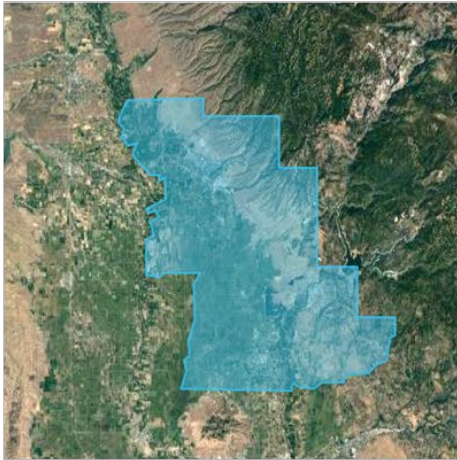
Table 2. Forecasted weather for Thursday, May 5 through Wednesday, May 11, 2022*

No.	County	Region	Date	Avg Temp (in canopy) °C	Avg Humidity (%)	Precip. (mm)	Leaf Wetness (hours/day)
1	Butte	West	5-5 to 5-11	14.0 to 22.1	35.1 to 57.7	0.8 (5-9 to 5-10)	4 to 13
2	Colusa	East	5-5 to 5-11	12.8 to 21.3	41.2 to 55.4	0.2 (5-9)	6 to 11
3	Fresno	Central	5-5 to 5-11	13.2 to 20.7	41.2 to 55.4	0.02 (5-5)	0
4	Fresno	East	5-5 to 5-11	13.1 to 23.2	42.0 to 51.2	0.04 (5-5)	0
5	Fresno	West	5-5 to 5-11	12.6 to 23.3	38.6 to 48.5	0	0
6	Kern	Central	5-5 to 5-11	11.8 to 21.6	41.0 to 49.2	0	0, 1 to 5
7	Kern	East	5-5 to 5-11	12.6 to 20.5	44.0 to 54.6	0	0
8	Kern	West	5-5 to 5-11	12.6 to 21.2	40.2 to 45.3	0	0
9	Madera	Central	5-5 to 5-11	11.7 to 20.5	48.6 to 58.4	0	0
10	Merced	Central	5-5 to 5-11	11.2 to 19.8	47.6 to 61.6	0	4 to 8
11	Stanislaus	Central	5-5 to 5-11	11.1 to 18.9	47.0 to 66.4	0	5 to 12
12	Stanislaus	East	5-5 to 5-11	10.5 to 19.7	51.4 to 68.7	0	9 to 13
13	Stanislaus	West	5-5 to 5-11	11.4 to 19.2	44.5 to 63.5	0	0, 6 to 10

Note: In this table, the order of some regions is the same as table 1 and was generated using the RADAR on-line forecasted report powered by the Semios® precision farming platform.

Fig. 1. Maps of counties and regions (alphabetically listed).

Butte West



Colusa East



Fresno Central



Fresno East



Fresno West



Fig. 2. Maps of counties and regions (alphabetically listed).

Kern Central



Kern East



Kern West



Madera Central



Fig. 3. Maps of counties and regions (alphabetically listed).

Merced Central



Stanislaus Central



Stanislaus East



Stanislaus West

