



40th
ANNIVERSARY

dec
12-13
2012
SACRAMENTO
CA

official program

trade show hours

wednesday, december 12
9:00 a.m.-5:30 p.m.

thursday, december 13
9:00 a.m.-5:30 p.m.

Tweet using #AlmondConf to share
your thoughts and lessons learned





BASF is proud to be a sponsor of the 40th Annual Almond Industry Conference.



We're also proud to offer innovative products for almond growers, including **Pristine**® fungicide, **Prowl**® H₂O herbicide, **Treevix**® herbicide powered by **Kixor**® herbicide technology and our latest innovation, **Altrevin**™ fire ant bait insecticide. Call your retailer or visit agproducts.basf.com to find out more.

Always read and follow label directions.
Pristine, Prowl and Treevix are registered trademarks and Altrevin is a trademark of BASF.
©2012 BASF Corporation. All Rights Reserved. APN 12-01-191-0001



Remember when...

You were graduating from high school and felt daunted by the idea of paying for college?

Now is your chance to make a difference in a graduating senior's life. Visit The Almond Conference's silent auction for a chance to win specialty gifts ranging from toy tractors to sample herbicides to work boots to hunting gear to destination vacations and everything in between!



FFA volunteers at 2010 conference

100% of the proceeds from the silent auction will be donated to the California FFA Association and used for scholarships.

Be sure to visit the auction in Hall A + B both Wednesday and Thursday to bid on unique items.

**HELP MAKE A DIFFERENCE
IN A GRADUATING
FFA STUDENT'S LIFE**



day 1, crop of choice

Schedule is subject to change.

TIME	CROP OF CHOICE	LOCATION
7:00 a.m.	REGISTRATION OPENS	East Lobby, 3rd Floor
8:00–9:15 a.m.	CALIFORNIA ALMOND SUPPLY: ENSURING ITS FUTURE Moderator: Richard Waycott (ABC) Speakers: Bill Harp (ABC Chairman), Jerry Hagstrom (Hagstrom Report), Charlie Arnot (Center of Food Integrity) CCA Units: 1.0 Professional Development DPR Units: 0.5 Other	Room 313 + 314 + 315
9:00–5:30 p.m.	TRADE SHOW OPEN	Hall A + B
9:15–10:00 a.m.	DEDICATED TRADE SHOW TIME AND COFFEE BREAK <i>Sponsored by Ripon Manufacturing Co., Inc.</i>	Hall A + B
9:45–11:00 a.m.	DESIGNING AND DEVELOPING A NEW ALMOND ORCHARD Moderator: Bob Curtis (ABC) Speakers: Roger Duncan (UCCE – Stanislaus County), David Doll (UCCE – Merced County), Ken Shackel (UC Davis) CCA Units: 0.25 Soil and Water Management, 0.5 Crop Management DPR Units: 0.5 Other	Room 313 + 314 + 315
11:00–11:40 a.m.	SPECIAL PRESENTATION: USDA'S SECRETARY OF AGRICULTURE, TOM VILSACK Moderator: Richard Waycott (ABC)	Room 313 + 314 + 315
12:00–12:50 p.m.	LUNCHEON <i>Sponsored by Yosemite Farm Credit</i> Speaker: Richard Waycott (ABC) Tickets may still be available at registration.	Hall C
12:50–1:10 p.m.	DEDICATED TRADE SHOW TIME	Hall A + B
1:15–2:25 p.m.	WHAT'S NEW IN NITROGEN MANAGEMENT Moderator: Gabriele Ludwig (ABC) Speakers: Joe Karkoski (Central Valley Regional Water Quality Control Board), Patrick Brown (UC Davis) CCA Units: 1.0 Nutrient Management DPR Units: 0.5 Laws and Regulations, 0.5 Other	Room 313 + 314 + 315
2:25–2:45 p.m.	METAL SPONSOR PRESENTATION: RESEARCH ON THE SAFETY OF PRISTINE® FUNGICIDE TO HONEY BEE COLONIES Moderator: Richard Waycott (ABC) Speakers: Joseph Wisk (BASF Corporation)	Room 313 + 314 + 315
2:45–3:20 p.m.	DEDICATED TRADE SHOW TIME	Hall A + B
3:20–4:30 p.m.	RESEARCH UPDATES Moderator: Bob Curtis (ABC) CCA Units: 0.25 Soil and Water Management, 0.5 Integrated Pest Management DPR Units: 0.5 Laws and Regulations, 0.5 Other	Room 313 + 314 + 315
4:30–5:30 p.m.	POSTER SESSION	Hall A + B
4:30–5:30 p.m.	ATTENDEE AND EXHIBITOR SOCIAL HOUR	Hall A + B
4:30–5:30 p.m.	AHPA GENERAL MEETING	Room 306 + 307
Evening	EVENING ON OWN	

RESTAURANT DISCOUNTS

Many Sacramento restaurants are offering discounts to The Almond Conference attendees. A list of all restaurants offering Show Your Badge discounts can be found in your conference bag.

COME VISIT THE ALMOND INDUSTRY TRADE SHOW IN HALL A + B, 9:00 A.M.–5:30 P.M.

- Wednesday breaks are sponsored by Ripon Manufacturing Co., Inc.
- Relax in the Exhibit Hall Lounge sponsored by Flory Industries.
- Be sure to visit the Almond Board booth to sign up for the USDA-NASS Census and receive a gift as a token of our appreciation.
- Be sure to visit the auction in Hall A + B both Wednesday and Thursday to bid on the silent auction items.

day 1, nut of choice

Schedule is subject to change.

TIME	NUT OF CHOICE	LOCATION
7:00 a.m.	REGISTRATION OPENS	East Lobby, 3rd Floor
8:00–9:15 a.m.	CALIFORNIA ALMOND SUPPLY: ENSURING ITS FUTURE Moderator: Richard Waycott (ABC) Speakers: Bill Harp (ABC Chairman), Jerry Hagstrom (Hagstrom Report), Charlie Arnot (Center of Food Integrity) CCA Units: 1.0 Professional Development DPR Units: 0.5 Other	Room 313 + 314 + 315
9:00–5:30 p.m.	TRADE SHOW OPEN	Hall A + B
9:15–10:00 a.m.	DEDICATED TRADE SHOW TIME AND COFFEE BREAK <i>Sponsored by Ripon Manufacturing Co., Inc.</i>	Hall A + B
9:45–11:00 a.m.	TRADE DEVELOPMENT CHALLENGES IN EUROPE AND ASIA-PACIFIC Moderator: Peggy Fyffe (ABC) Speakers: Vincent Rieckmann (August Töpfer & Co.), Sudarshan Mazumdar (ABC), Daniel Chan (PR Consultants) CCA Units: 0.5 Professional Development	Room 306 + 307
11:00–11:40 a.m.	SPECIAL PRESENTATION: USDA'S SECRETARY OF AGRICULTURE, TOM VILSACK Moderator: Richard Waycott (ABC)	Room 313 + 314 + 315
12:00–12:50 p.m.	LUNCHEON <i>Sponsored by Yosemite Farm Credit</i> Speaker: Richard Waycott (ABC) Tickets may still be available at registration.	Hall C
12:50–1:10 p.m.	DEDICATED TRADE SHOW TIME	Hall A + B
1:15–2:25 p.m.	MARKETING AROUND THE WORLD CCA Units: 0.25 Professional Development	Room 312
2:25–2:45 p.m.	METAL SPONSOR PRESENTATION: RESEARCH ON THE SAFETY OF PRISTINE® FUNGICIDE TO HONEY BEE COLONIES Moderator: Richard Waycott (ABC) Speakers: Joseph Wisk (BASF Corporation)	Room 313 + 314 + 315
2:45–3:20 p.m.	DEDICATED TRADE SHOW TIME	Hall A + B
3:20–4:30 p.m.	MARKETING AROUND THE WORLD CCA Units: 0.25 Professional Development	Room 312
4:30–5:30 p.m.	POSTER SESSION	Hall A + B
4:30–5:30 p.m.	ATTENDEE AND EXHIBITOR SOCIAL HOUR	Hall A + B
4:30–5:30 p.m.	AHPA GENERAL MEETING	Room 306 + 307
Evening	EVENING ON OWN	



session overview

CALIFORNIA ALMOND SUPPLY: ENSURING ITS FUTURE

ROOM 313 + 314 + 315 • 8:00–9:15 A.M.

MODERATOR: RICHARD WAYCOTT (ABC)

SPEAKERS: BILL HARP (ABC CHAIRMAN), JERRY HAGSTROM (HAGSTROM REPORT), CHARLIE ARNOT (CENTER FOR FOOD INTEGRITY)

CCA UNITS: 1.0 PROFESSIONAL DEVELOPMENT • DPR UNITS: 0.5 OTHER

This symposium will begin with a welcome from the Chairman of the Almond Board of California Board of Directors, Bill Harp, and the Board's President and CEO Richard Waycott. Bill and Richard will comment on several of the principal issues currently facing the industry, providing both opportunity and challenge. Guest speakers will describe the landscape, which will affect agricultural practices and food products, based on the outcome of the recent elections and the macro trends involving consumer and customer attitudes.

SPECIAL PRESENTATION

ROOM 313 + 314 + 315 • 11:00–11:40 A.M.

MODERATOR: RICHARD WAYCOTT (ABC)

SPEAKER: TOM VILSACK (USDA'S SECRETARY OF AGRICULTURE)

California Almonds and the California Almond industry touch so many of today's most timely topics, such as health, water, air quality, food safety, etc. As such, there is no better person to address conference attendees than USDA's Secretary of Agriculture, Tom Vilsack, who will share valuable information as it relates to today's rapidly changing times.

LUNCHEON

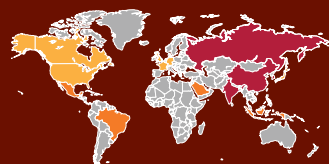
HALL C • 12:00–12:50 P.M.

SPONSORED BY YOSEMITE FARM CREDIT

SPEAKER: RICHARD WAYCOTT (ABC)

ABC's President and CEO, Richard Waycott, will share his perspectives on the progress that Almond Board of California has achieved over the past year and how he sees the coming year's challenges and opportunities. Richard will remark on the key changes and improvements that have been implemented at ABC over the past year, and will share a video presentation that highlights the industry's achievements during 2012.

MARKETING AROUND THE WORLD

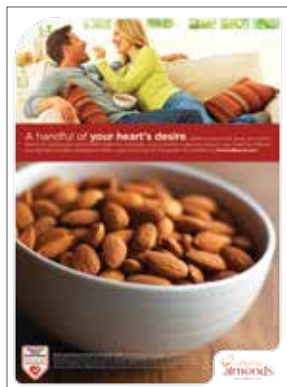


ROOM 312 • 1:15–2:25 P.M. AND 3:20–4:30 P.M.

SPEAKERS: STACEY HUMBLE (ABC–GLOBAL MARKETING LEAD), MOLLY SPENCE (ABC–NORTH AMERICA), DARIELA ROFFE-RACKIND (ABC–EUROPEAN REGION), SUDARSHAN MAZUMDAR (ABC–INDIA), KOKO SHENG (ABC–CHINA)

CCA UNITS: 0.25 PROFESSIONAL DEVELOPMENT

Do you ever wish you had the opportunity to speak with Almond Board marketing managers to learn what is being done to promote California Almonds around the world? This marketing session will be your chance. You will be able to virtually travel around the world and see what marketing activities ABC is conducting in key markets. ABC marketing managers will be available to speak with you one on one to provide an overview of the market strategies, target audiences, market research and marketing tactics in China, Europe, India and North America. Don't have time to chat? Simply swing by one of the sessions and walk around the country stations to see a sample of marketing activities that have been executed in each of these regions.



CROP OF CHOICE

DESIGNING AND DEVELOPING A NEW ALMOND ORCHARD

ROOM 313 + 314 + 315 • 9:45–11:00 A.M.

MODERATOR: BOB CURTIS (ABC)

SPEAKERS: ROGER DUNCAN (UCCE – STANISLAUS COUNTY), DAVID DOLL (UCCE – MERCED COUNTY), KEN SHACKEL (UC DAVIS)

CCA UNITS: 0.25 SOIL AND WATER MANAGEMENT, 0.5 CROP MANAGEMENT • DPR UNITS: 0.5 OTHER

Careful planning before planting/replanting a new orchard is key to starting off an almond orchard on the right foot. The careful management of young trees helps to ensure the longevity and productivity of a healthy orchard. In this session several almond farm advisors and researchers will provide growers with factors to consider in making some of the critical choices in the life of an almond orchard that an almond grower has to make.

WHAT'S NEW IN NITROGEN MANAGEMENT

ROOM 313 + 314 + 315 • 1:15–2:25 P.M.

MODERATOR: GABRIELE LUDWIG (ABC)

SPEAKERS: JOE KARKOSKI (CENTRAL VALLEY REGIONAL WATER QUALITY CONTROL BOARD), PATRICK BROWN (UC DAVIS)

CCA UNITS: 1.0 NUTRIENT MANAGEMENT • DPR UNITS: 0.5 LAWS AND REGULATIONS, 0.5 OTHER

Fertilizing almonds is one of the biggest annual input costs into an almond orchard, thus growers are always asking themselves "are there better ways to manage this input?" In addition, particularly for nitrogen fertilizer, concerns about environmental impacts by nitrogen inputs are leading to regulations. This session will provide an update on new groundwater regulations focused on reducing nitrate leaching as part of the Irrigated Lands Program, which will affect almost every grower in the Central Valley. It will also focus on improved techniques growers can use to help decide when and how much nitrogen fertilizer their orchards need based on the ongoing research the Almond Board has been funding.

RESEARCH UPDATES

ROOM 313 + 314 + 315 • 3:20–4:30 P.M.

MODERATOR: BOB CURTIS (ABC)

CCA UNITS: 0.25 SOIL AND WATER MANAGEMENT, 0.5 INTEGRATED PEST MANAGEMENT

DPR UNITS: 0.5 LAWS AND REGULATIONS, 0.5 OTHER

Research Updates include:

- UC Farm Advisor Almond Culture and Orchard Management Studies
- Nickels Soil Lab and Concealed Damage Studies
- Defining an Almond ET/Yield Production Function for Almonds
- Drought Survival Strategies for Established Almond Orchards
- Real-Time Weather Monitoring for Frost Protection with Sprinklers
- Precision Canopy and Water Management with Sensor Technology
- Harvest and Stockpile Management to Reduce Aflatoxin Potential
- Biocontrol of Aspergillus and Aflatoxin in Almonds
- Almond Tree Growth and Development Model
- Orchard Carbon Recycling and Replant Disease
- Can Chipped Almond Prunings Provide Carbon Sequestration?
- Almond Orchards and Greenhouse Gases: Impact of Nitrogen Fertilization
- Almond Orchards and Greenhouse Gases: Life Cycle Assessment

NUT OF CHOICE

TRADE DEVELOPMENT CHALLENGES IN EUROPE AND ASIA-PACIFIC

ROOM 306 + 307 • 9:45–11:00 A.M.

MODERATOR: PEGGY FYFFE (ABC)

SPEAKERS: VINCENT RIECKMANN (AUGUST TÖPFER & CO.), SUDARSHAN MAZUMDAR (ABC), DANIEL CHAN (PR CONSULTANTS)

CCA UNITS: 0.5 PROFESSIONAL DEVELOPMENT

The world is a smaller place and what were once considered underdeveloped markets now offer tremendous opportunities. Almond Board of California sees this as true, especially in Europe, India and China. However, these opportunities come with their share of trade and regulatory challenges, challenges that can be difficult at times. During this symposium, expert panelists from Europe, China and India will share with you a market overview discussing trade barriers and the many challenges associated with rising food safety measures in each of these regions.

SPONSOR PRESENTATION

RESEARCH ON THE SAFETY OF PRISTINE® FUNGICIDE TO HONEY BEE COLONIES

ROOM 313 + 314 + 315 • 2:25–2:45 P.M.

MODERATOR: RICHARD WAYCOTT (ABC)

SPEAKER: JOSEPH WISK (BASF CORPORATION)

A review of advanced data that has been generated to evaluate the safety of Pristine fungicide to honey bee brood, including queen cell development. The data was generated to support the use of Pristine fungicide in almonds.



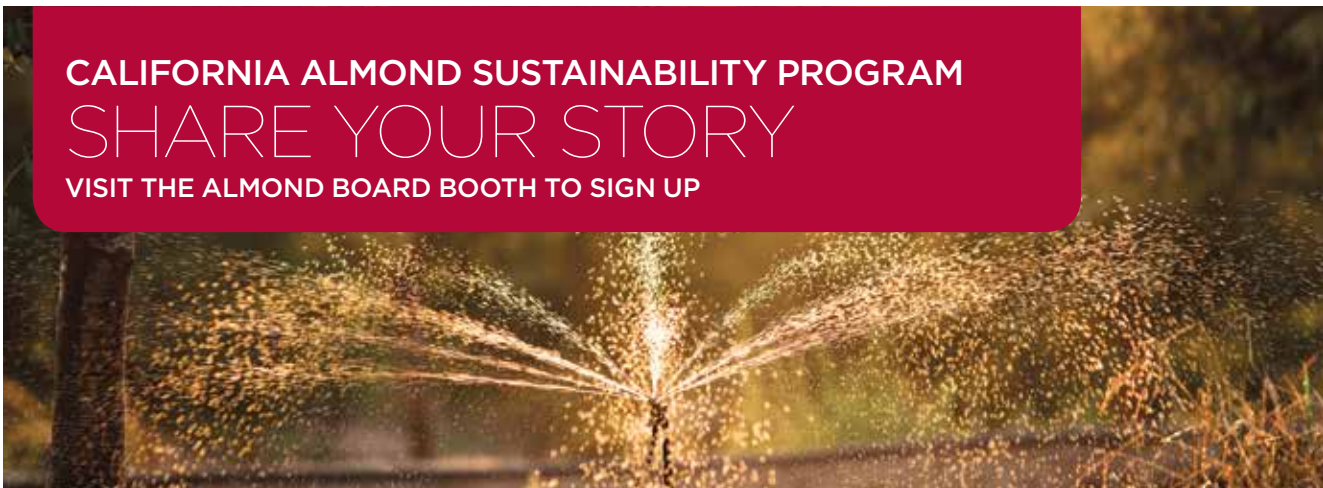
CENSUS OF AGRICULTURE
YOUR VOICE. YOUR FUTURE.
VISIT THE ALMOND BOARD BOOTH TO PARTICIPATE



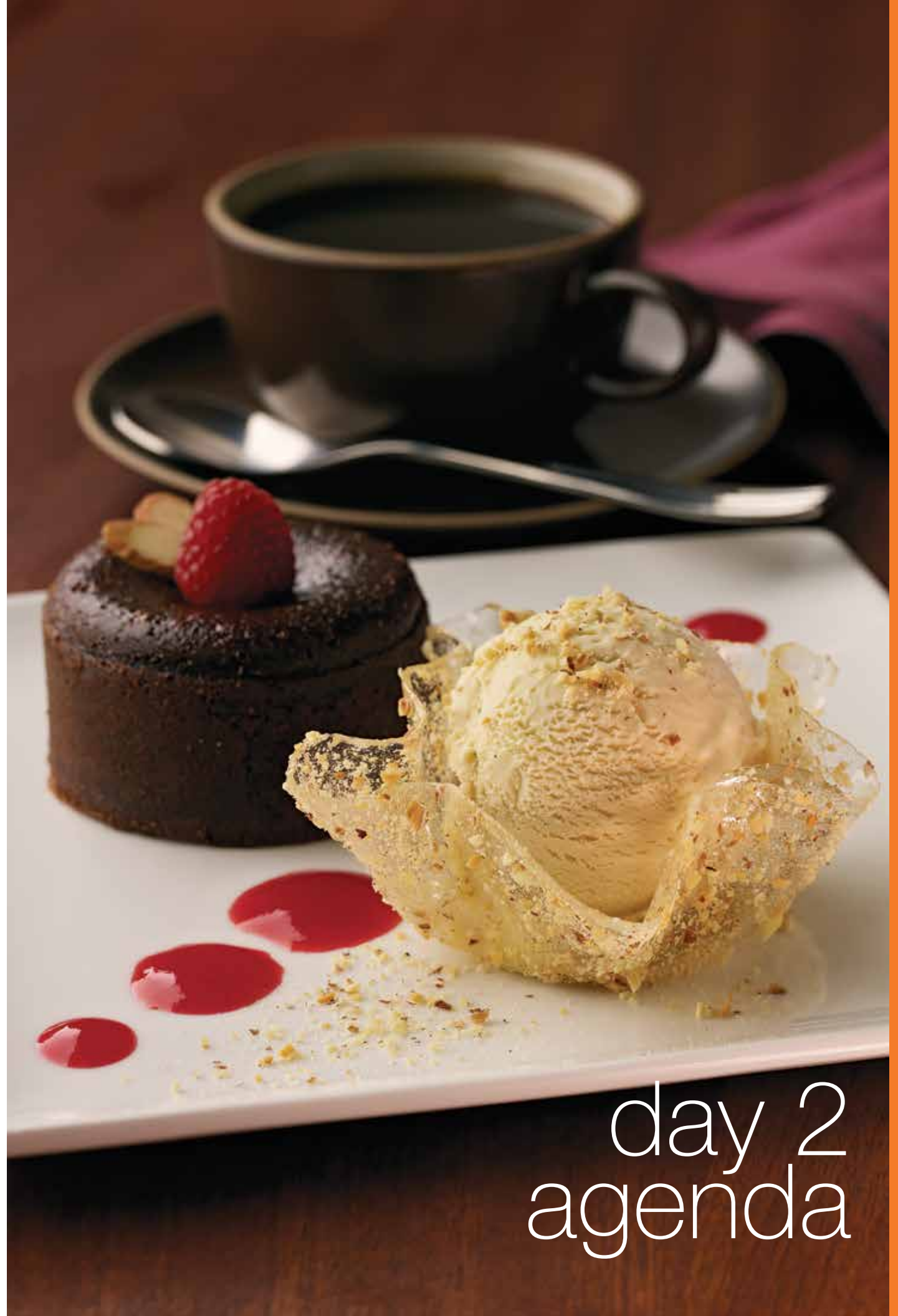
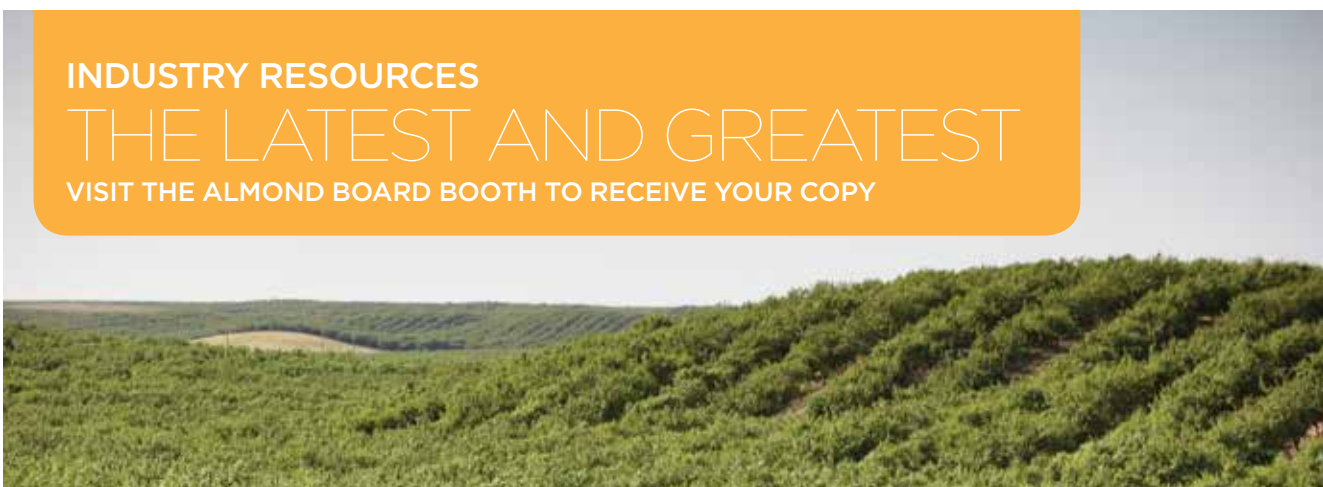
CALIFORNIA ALMOND LEADERSHIP PROGRAM
GROWING YOUR FUTURE
VISIT THE ALMOND BOARD BOOTH TO APPLY



CALIFORNIA ALMOND SUSTAINABILITY PROGRAM
SHARE YOUR STORY
VISIT THE ALMOND BOARD BOOTH TO SIGN UP



INDUSTRY RESOURCES
THE LATEST AND GREATEST
VISIT THE ALMOND BOARD BOOTH TO RECEIVE YOUR COPY



day 2
agenda

day 2, crop of choice

Schedule is subject to change.

TIME	CROP OF CHOICE	LOCATION
7:00 a.m.	REGISTRATION OPENS	East Lobby
7:00–8:10 a.m.	GROWERS' BREAKFAST PROACTIVE CURRENTS: TAKING CHARGE TO DEFUSE SURGING POWER COSTS <i>Sponsored by Turkhan Foods</i> Moderator: Jenny Konschak (ABC) Speakers: Jayson Moser (JKB Energy)	Hall C
8:20–9:20 a.m.	CALIFORNIA ALMOND DEMAND: LOOKING TO THE FUTURE Moderator: John Talbot (ABC) Speakers: Lu Ann Williams (Innova Market Insights) CCA Units: 0.5 Professional Development	Room 313 + 314 + 315
9:00–5:30 p.m.	TRADE SHOW OPEN	Hall A + B
9:15–10:00 a.m.	DEDICATED TRADE SHOW TIME AND COFFEE BREAK <i>Sponsored by Almond Board of California</i>	Hall A + B
9:45–11:00 a.m.	PEST MANAGEMENT UPDATE: INSECT, DISEASE, WEED AND VERTEBRATE PESTS Moderator: Bob Curtis (ABC) Speakers: Joel Siegel (USDA-ARS), Brad Hanson (UC Davis), Jim Adaskaveg (UC Riverside), Roger Baldwin (UC IPM) CCA Units: 1.0 Integrated Pest Management DPR Units: 0.5 Laws and Regulations, 0.5 Other	Room 313 + 314 + 315
11:00–12:00 p.m.	DEDICATED TRADE SHOW TIME	Hall A + B
12:10–1:20 p.m.	LUNCHEON: BREAKOUTS/BUFFET <i>Sponsored by Farm Credit Alliance</i> 1) Spray Coverage: The Missing Link in IPM DPR Units: 0.25 Laws and Regulations 2) Economic Update 3) Honey Bee Colony Assessment DPR Units: 0.25 Other Breakout sessions are open to all attendees. If you are in need of a luncheon ticket, please visit the registration desk to check availability.	Room 313 + 314 + 315 Hall C Room 306 + 307
1:30–2:15 p.m.	POLLINATION: PREP, PARTNERSHIP AND POLICY Moderator: Chris Heintz (ABC Bee Task Force Liaison/Project Apis m.) Speaker: George Hansen (American Beekeeping Federation) CCA Units: 0.5 Crop Management DPR Units: 0.25 Laws and Regulations, 0.5 Other	Room 313 + 314 + 315
2:20–3:05 p.m.	WATER UPDATE: REGULATORY AND HYDROLOGIC IMPACTS ON CALIFORNIA ALMONDS Moderator: Bob Curtis (ABC) Speakers: Melissa Poole and Kimberly Brown (Paramount Farming Company)	Room 313 + 314 + 315
2:30–3:30 p.m.	DEDICATED TRADE SHOW TIME	Hall A + B
3:30–4:30 p.m.	RESEARCH UPDATES Moderator: Bob Curtis (ABC) CCA Units: 1.0 Crop Management DPR Units: 0.25 Other	Room 313 + 314 + 315
4:30–5:30 p.m.	POSTER SESSION	Hall A + B
4:30–5:30 p.m.	ATTENDEE AND EXHIBITOR SOCIAL HOUR	Hall A + B
5:30–6:30 p.m.	FREE HOUR	
6:30 p.m.	DOORS OPEN TO GALA DINNER	Hall C
7:00–9:30 p.m.	GALA DINNER <i>Sponsored by M. Parise Associates</i> Entertainment: Penn & Teller Tickets may still be available at registration.	Hall C

COME VISIT THE ALMOND INDUSTRY TRADE SHOW IN HALL A + B, 9:00 A.M.–5:30 P.M.

- Relax in the Exhibit Hall Lounge sponsored by Flory Industries.
- Be sure to visit the auction in Hall A + B both Wednesday and Thursday to bid on the silent auction items.
- Be sure to visit the Almond Board booth to learn more about the California Almond Sustainability Program and Almond Leadership Program.

day 2, nut of choice

Schedule is subject to change.

TIME	NUT OF CHOICE	LOCATION
7:00 a.m.	REGISTRATION OPENS	East Lobby
7:00–8:10 a.m.	GROWERS' BREAKFAST PROACTIVE CURRENTS: TAKING CHARGE TO DEFUSE SURGING POWER COSTS <i>Sponsored by Turkhan Foods</i> Moderator: Jenny Konschak (ABC) Speakers: Jayson Moser (JKB Energy)	Hall C
8:20–9:20 a.m.	CALIFORNIA ALMOND DEMAND: LOOKING TO THE FUTURE Moderator: John Talbot (ABC) Speakers: Lu Ann Williams (Innova Market Insights) CCA Units: 0.5 Professional Development	Room 313 + 314 + 315
9:00–5:30 p.m.	TRADE SHOW OPEN	Hall A + B
9:15–10:00 a.m.	DEDICATED TRADE SHOW TIME AND COFFEE BREAK <i>Sponsored by Almond Board of California</i>	Hall A + B
9:45–11:00 a.m.	MARKETING AROUND THE WORLD	Room 312
11:00–12:00 p.m.	DEDICATED TRADE SHOW TIME	Hall A + B
12:10–1:20 p.m.	LUNCHEON: BREAKOUTS/BUFFET <i>Sponsored by Farm Credit Alliance</i> 1) Spray Coverage: The Missing Link in IPM DPR Units: 0.25 Laws and Regulations 2) Economic Update 3) Honey Bee Colony Assessment DPR Units: 0.25 Other Breakout sessions are open to all attendees. If you are in need of a luncheon ticket, please visit the registration desk to check on availability.	Room 313 + 314 + 315 Hall C Room 306 + 307
1:30–2:30 p.m.	STUDY PROVIDES NEW WAY TO MEASURE CALORIES USING WHOLE ALMONDS Moderator: Stacey Humble (ABC) Speakers: Karen Lapsley (ABC), Bill Layden (FoodMinds, LLC) CCA Units: 0.5 Professional Development	Room 306 + 307
2:30–3:30 p.m.	DEDICATED TRADE SHOW TIME	Hall A + B
3:30–4:30 p.m.	SOCIAL MEDIA UPDATE: DON'T JUST UPDATE YOUR STATUS, SHARE YOUR STORY Moderator: John Talbot (ABC) Speaker: Christopher Barger (Voce, a Porter Novelli Company) CCA Units: 0.5 Professional Development	Room 306 + 307
4:30–5:30 p.m.	DEDICATED TRADE SHOW TIME	Hall A + B
4:30–5:30 p.m.	ATTENDEE AND EXHIBITOR SOCIAL HOUR	Hall A + B
5:30–6:30 p.m.	FREE HOUR	
6:30 p.m.	DOORS OPEN TO GALA DINNER	Hall C
7:00–9:30 p.m.	GALA DINNER <i>Sponsored by M. Parise Associates</i> Entertainment: Penn & Teller Tickets may still be available at registration.	Hall C

RESTAURANT DISCOUNTS

Many Sacramento restaurants are offering discounts to The Almond Conference attendees. A list of all restaurants offering Show Your Badge discounts can be found in your conference bag.



2012
sacramento

session overview

GROWERS' BREAKFAST

PROACTIVE CURRENTS: TAKING CHARGE TO DEFUSE SURGING POWER COSTS

HALL C • 7:00–8:10 A.M.

SPONSORED BY TURKHAN FOODS

MODERATOR: JENNY KONSCHAK (ABC)

SPEAKER: JAYSON MOSER (JKB ENERGY)

JKB Energy, the 2012 Almond Board of California Green Medal Sponsor, provides an up-to-date overview of the largest policy and infrastructure changes since hydroelectric power. As California begins a new chapter in energy resources, how can an independent business benefit? The new generation of solar and advanced energy technologies can dramatically reduce your input costs.

CALIFORNIA ALMOND DEMAND: LOOKING TO THE FUTURE

ROOM 313 + 314 + 315 • 8:20–9:20 A.M.

MODERATOR: JOHN TALBOT (ABC)

SPEAKER: LU ANN WILLIAMS (INNOVA MARKET INSIGHTS)

CCA UNITS: 0.5 PROFESSIONAL DEVELOPMENT

California Almond shipments have been growing at an average rate of 12% for the last five years and have doubled in the last 10. This is impressive growth for any industry, but can it continue? Regardless of what happens on the supply side, we believe the demand for almonds will continue to grow at a robust rate. The awareness of the nutritional value and health benefits of almonds continues to grow, and consumer interest in almonds is at an all-time high. At the same time, our general growth in emerging markets like China, India and South Korea continues at an aggressive pace. The good news is that economic and lifestyle trends support continued growth in both of these areas. Lu Ann Williams, from the research company Innova Market Insights, will highlight the key trends that are expected to influence our industry over the next five years.

LUNCHEON: BREAKOUT WORKSHOPS

WORKSHOP 1

SPRAY COVERAGE: THE MISSING LINK IN IPM

ROOM 313 + 314 + 315 • 12:10–1:20 P.M.

SPONSORED BY FARM CREDIT ALLIANCE

DPR UNITS: 0.25 LAWS AND REGULATIONS

Adjusting sprayer rigs will improve coverage, resulting in more effective pest control. At this workshop, attendees will learn about new research that shows just how much efficacy can be improved when spray rigs are properly set up. And recent data demonstrates the amount of drift that can be prevented with timely and accurate calibration, reducing its impact on endangered species and the environment, and having the biggest impact with the least amount of material.

WORKSHOP 2

ECONOMICS OF ALMOND PRODUCTION

HALL C • 12:10–1:20 P.M.

SPEAKERS: RICHARD WAYCOTT (ABC), BILL HARP (ABC CHAIRMAN)

The economics of growing almonds are complex; growers need to understand, not just the current costs of growing the crop, but what is happening with other crops in the state. Returns on investment are affected by today's grower operational costs as well as by tomorrow's considerations—e.g., tax implications and succession planning.

WORKSHOP 3

HONEY BEE COLONY ASSESSMENT

ROOM 306 + 307 • 12:10–1:20 P.M.

DPR UNITS: 0.25 OTHER

Growers and beekeepers should know how colony strength is assessed to be sure contract requirements can be met. At this workshop, participants will learn how colony strength is evaluated and will be introduced to a new e-learning course developed by Shannon Mueller, Ph.D., Fresno County farm advisor. The course consists of multiple modules covering many aspects of bee biology, hive development and potential impacts of pesticide applications within the pollination phase.

GALA DINNER

HALL C • 7:00–9:30 P.M.

SPONSORED BY M. PARISE ASSOCIATES

MODERATOR: RICHARD WAYCOTT (ABC)

ENTERTAINERS: PENN & TELLER

Get ready for a magical night full of laughs, courtesy of Penn & Teller, as we celebrate another great year for California Almonds at The Almond Conference Gala Dinner. Penn & Teller have appeared in just about every medium—stage shows in Las Vegas and Broadway, TV, movies, even as characters in videogames.

CROP OF CHOICE

PEST MANAGEMENT UPDATE: INSECT, DISEASE, WEED AND VERTEBRATE PESTS

ROOM 313 + 314 + 315 • 9:45–11:00 A.M.

MODERATOR: BOB CURTIS (ABC)

SPEAKERS: JOEL SIEGEL (USDA-ARS), BRAD HANSON (UC DAVIS), JIM ADASKAVEG (UC RIVERSIDE), ROGER BALDWIN (UC IPM)

CCA UNITS: 1.0 INTEGRATED PEST MANAGEMENT • DPR UNITS: 0.5 LAWS AND REGULATIONS, 0.5 OTHER

Pests and pest-control tools for almonds keep evolving. Come listen to the key experts in almond pest management, including weeds, insects and diseases. Topics will include spray efficacy and new tools in weed, insect and disease management.

POLLINATION: PREP, PARTNERSHIP AND POLICY

ROOM 313 + 314 + 315 • 1:30–2:15 P.M.

MODERATOR: CHRIS HEINTZ (ABC BEE TASKFORCE LIASIONON/PROJECT APIS M.)

SPEAKER: GEORGE HANSEN (AMERICAN BEEKEEPING FEDERATION)

CCA UNITS: 0.5 CROP MANAGEMENT • DPR UNITS: 0.25 LAWS AND REGULATIONS, 0.5 OTHER

The health of almond growing is intimately entwined with the health of the beekeeping industry in the United States. This session will provide an update on partnerships and policies geared toward improving honeybee supply for almond pollination, as well as provide a perspective on beekeeper activities by the leader of the American Beekeeping Federation.

WATER UPDATE: REGULATORY AND HYDROLOGIC IMPACTS ON CALIFORNIA ALMONDS

ROOM 313 + 314 + 315 • 2:20–3:05 P.M.

MODERATOR: BOB CURTIS (ABC)

SPEAKERS: MELISSA POOLE AND KIMBERLY BROWN (PARAMOUNT FARMING COMPANY)

This session will cover how hydrology and weather, along with regulatory and judicial actions, politics and legislation, are impacting water supplies for the almond industry. The speakers will address both near-term and longer-range impacts on water supply: What will the outlook be for 2013? What are factors impacting supplies now and in the future? The presentation will cover key issues on water supply, like surface and groundwater, and the Delta. This is a unique opportunity to get educated for better understanding and involvement in water supply and policy issues.

RESEARCH UPDATES

ROOM 313 + 314 + 315 • 3:30–4:30 P.M.

MODERATOR: BOB CURTIS (ABC)

CCA UNITS: 1.0 CROP MANAGEMENT • DPR UNITS: 0.25 OTHER

Research Updates include:

- Improving NOW Mating Disruption and Monitoring Lures
- Monitoring Adult NOW with Host Plant Volatiles
- Insect and Mite Research
- Insect and Mite Pest Management in the Lower San Joaquin Valley
- Fungicide Impact on Honey Bee Development
- Importation and Preservation of Germplasm for U.S. Honey Bee Breeding and Stock Improvement
- Tech Transfer Teams to Improve Honey Bee Health and Stocks
- Planting Honey Bee Forage Crops in and Around Almond Orchards
- Honey Bee Colony Density and Almond Nut Set
- Honey Bee Colony Assessment
- Recent Advances in Blue Orchard Bee Management for Almond Pollination
- Almond Crop Forecasting Research



Be sure to visit the Almond Board booth #628 to pick up your copy of the Research Update (formally known as the Proceedings) and other great industry resources.

california
almonds[®]
Almond Board of California

session overview cont.

NUT OF CHOICE

STUDY PROVIDES NEW WAY TO MEASURE CALORIES USING WHOLE ALMONDS

ROOM 306 + 307 • 1:30–2:30 P.M.

MODERATOR: STACEY HUMBLE (ABC)

SPEAKERS: KAREN LAPSLEY (ABC), BILL LAYDEN (FOODMINDS, LLC)

CCA UNITS: 0.5 PROFESSIONAL DEVELOPMENT

A new study published in the *American Journal of Clinical Nutrition* provides a new understanding of almonds' calorie count, showing that almonds provide 20% fewer calories than originally stated on the Nutrition Facts Panel.¹ This symposium features a report on the study findings, a recap of Almond Board's global education and marketing efforts around the study, and what the results may mean for marketing almonds in the future based on several factors, including FDA priorities. The symposium will conclude with an overview of how the FDA views food label changes and how things might change as a result of the 2012 election.

1. Novotny JA, Gebauer SK, Baer DJ. Discrepancy between the Atwater factor predicted and empirically measured energy values of almonds in human diets. *American Journal of Clinical Nutrition*. 2012;96(2):296-301.

SOCIAL MEDIA UPDATE: DON'T JUST UPDATE YOUR STATUS, SHARE YOUR STORY

ROOM 306 + 307 • 3:30–4:30 P.M.

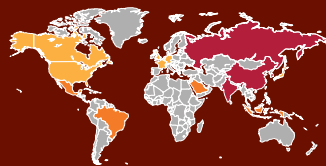
MODERATOR: JOHN TALBOT (ABC)

SPEAKER: CHRISTOPHER BARGER (VOCE, A PORTER NOVELLI COMPANY)

CCA UNITS: 0.5 PROFESSIONAL DEVELOPMENT

This symposium will provide a high-level overview of today's media landscape and review several case studies of companies, including agricultural industries, that are doing social media really well and discuss those best practices from which the California Almond industry should learn. Hear about the initial steps that Almond Board is taking to implement their social marketing media approach and how you might use the information to help share your story.

MARKETING AROUND THE WORLD



ROOM 312 • 9:45–11:00 A.M.

SPEAKERS: STACEY HUMBLE (ABC—GLOBAL MARKETING LEAD), MOLLY SPENCE (ABC—NORTH AMERICA), DARIELA ROFFE-RACKIND (ABC—EUROPEAN REGION), SUDARSHAN MAZUMDAR (ABC—INDIA), KOKO SHENG (ABC—CHINA)

Do you ever wish you had the opportunity to speak with the Almond Board marketing managers to learn what is being done to promote California Almonds around the world? This marketing session will be your chance. You will be able to virtually travel around the world and see what marketing activities ABC is conducting in key markets. ABC marketing managers will be available to speak with you one on one to provide an overview of the market strategies, target audiences, market research and marketing tactics in China, Europe, India and North America. Don't have time to chat? Simply swing by one of the sessions and walk around the country stations to see a sample of marketing activities that have been executed in each of these regions.



poster
session map

poster session maps



poster sessions

day 1 session

TIME	LOCATION	
4:30–5:30 p.m.	EXHIBIT HALL	
	1	10.HORT10.SNYDER
	2	12.HORT2.LAMPINEN
	3	12.AFLA2.LAMPINEN
	4	PRECISION MANAGEMENT WITH SENSOR TECHNOLOGY
	5	12.HORT13.LAMPINEN
	6	12.HORT8.SHACKEL
	7	12.AIR9.DOLL
	8	12.HORT17.SHACKEL
	9	12.HORT4.DUNCAN
	10	12.HORT5.DUNCAN
	11	12.HORT16.ARADHYA/LEDBETTER
	12	12.PATH1.BROWNE
	13	12.HORT10.GRADZIEL
	14	12.AIR5.GAO
15	12.HORT3.HOLTZ	

day 1 session continued

TIME	LOCATION	
4:30–5:30 p.m.	EXHIBIT HALL	
	16	12.HORT3.HOLTZ
	17	12.HORT3.HOLTZ
	18	12.PREC3.HOLTZ
	19	12.PATH7.BAUMGARTNER
	20	12.PREC1.DEJONG
	21	12.HORT6.NIEDERHOLZER
	22	12.HORT14.NIEDERHOLZER
	23	11.AIR8.KENDALL
	24	12.STEWCROP4.KIMMELSHUE
	25	12.PREC4.HOPMANS
	26	12.HORT11A.SANDEN/SHACKEL
	27	12.PREC2.BROWN/12.PREC5.BROWN
	28	12.AIR2.SMART
	29	12.AFLA1.MICHAILIDES
	32	12.HORT1.GRADZIEL

poster sessions

day 1 session continued

TIME	LOCATION	ALMOND QUALITY & FOOD SAFETY
4:30–5:30 p.m.	66	CONCEALED DAMAGE FORMATION IN WET ALMONDS
	67	VOLATILES IN RAW AND ROASTED ALMONDS
	68	ACRYLAMIDE AND AGES IN ROASTED ALMONDS
	69	ENZYMATIC ACTIVITY IN ALMONDS
	70	SKIN SLIPPAGE IN ALMONDS
	71	ALMOND SURFACE AREA MODEL
	72	RISK ASSESSMENT OF SALMONELLOSIS
	73	EVALUATION OF THE SAFETY OF ENTEROCOCCUS
	74	CONTROLLING FOODBORNE PATHOGENS IN ALMONDS
	75	MOISTURE SORPTION AND TEXTURAL QUALITY
	76	PREDICTIVE MODEL OF QUALITY AND MOSITURE CONTENT
	77	GASTRIC DIGESTION OF RAW AND ROASTED ALMONDS
	78	IR PASTEURIZATION FOR RAW ALMONDS
	79	IR/HOT AIR SEQUENTIAL ROASTING
	80	PAN RESEARCH PROJECT

day 2 session

TIME	LOCATION	
4:30–5:30 p.m.	EXHIBIT HALL	
	39	12.ABCBOD1.WANG
	41	12.ENTO1.BERENBAUM
	42	12.WATER1.STOLTZ
	43	12.ENTO11.SIEGEL/WALSE
	44	12.ENTO9.CARDE
	45	11.ENTO4.BECK
	46	12.ENTO7.ZALOM
	47	10.WATER5.LEDBETTER
	48	12.ENTO6.HAVILAND
	49	12.STEWCROP1.LOOKER
	50	12.HORT12.HANSON
	51	NOW EGG LAYING REPELLANTS
	52	12.ENTO2.BURKS
	53	BRAD HIGBEE, PARAMOUNT FARMS
	54	BRAD HIGBEE, PARAMOUNT FARMS
	55	12.WATER3.GILES/MARKLE/NIEDERHOLZER
56	12.PATH3.ADASKAVEG	
57	12.PATH4.ADASKAVEG	
58	12.ENTO3.AL-KHATIB	
81	VERTEBRATE PEST MANAGEMENT	
4:30–5:30 p.m.	POLLINATION PAVILION	
	30	BLUE ORCHARD BEE MANAGEMENT
	31	12.POLL11.EISCHEN
	33	11.POLL8.MUELLER
	34	PROJECT APHIS M
	35	CA STATE BEEKEEPERS ASSOCIATION
	36	12.POLL9.FRAZIER
	37	12.POLL12.HOOVEN
38	12.POLL7.SHEPPARD/COBEY	
40	11.POLL5.DONOHUE/SPIVAK	

day 1 & 2 session

TIME	LOCATION	SUSTAINABILITY PROGRAM
9:00 a.m.–5:30 p.m.	34	PROJECT APIS M.
	35	CA STATE BEEKEEPERS ASSOCIATION
	59	UC AGRICULTURE AND NATURAL RESOURCES PUBLICATIONS
4:30–5:30 p.m.	60	CASP – INTRODUCTION AND ORGANIZATIONAL PROFILE
	61	CASP – IRRIGATION MODULE
	62	CASP – NUTRIENT MANAGEMENT MODULE
	63	CASP – ENERGY EFFICIENCY MODULE
	64	SUREHARVEST
	65	CASP – PEST MANAGEMENT

P2G
PROGRESSIVE
GENETIC GROUP

*P2G Rootstock Update
Wednesday at 4:30pm*

Advanced Clonal Rootstocks for Almonds

Krymsk® 86 <small>Inv AP 11 USPP#18,272</small> Peach-Plum Hybrid • Superior Anchorage • Tolerates Heavy Soil • Nonparrel Compatible	Bright's Hybrid® 5 <small>Inv Arthur V1 USPP#18,782 P2</small> Peach-Almond Hybrid • Vigorous & Well Anchored • Nematode Resistant • Deep Rooted & Drought Tolerant	Empyrean® 1 Peach Hybrid • High Vigor & High Yields • Quick space filling • Nematode Resistant
--	---	---

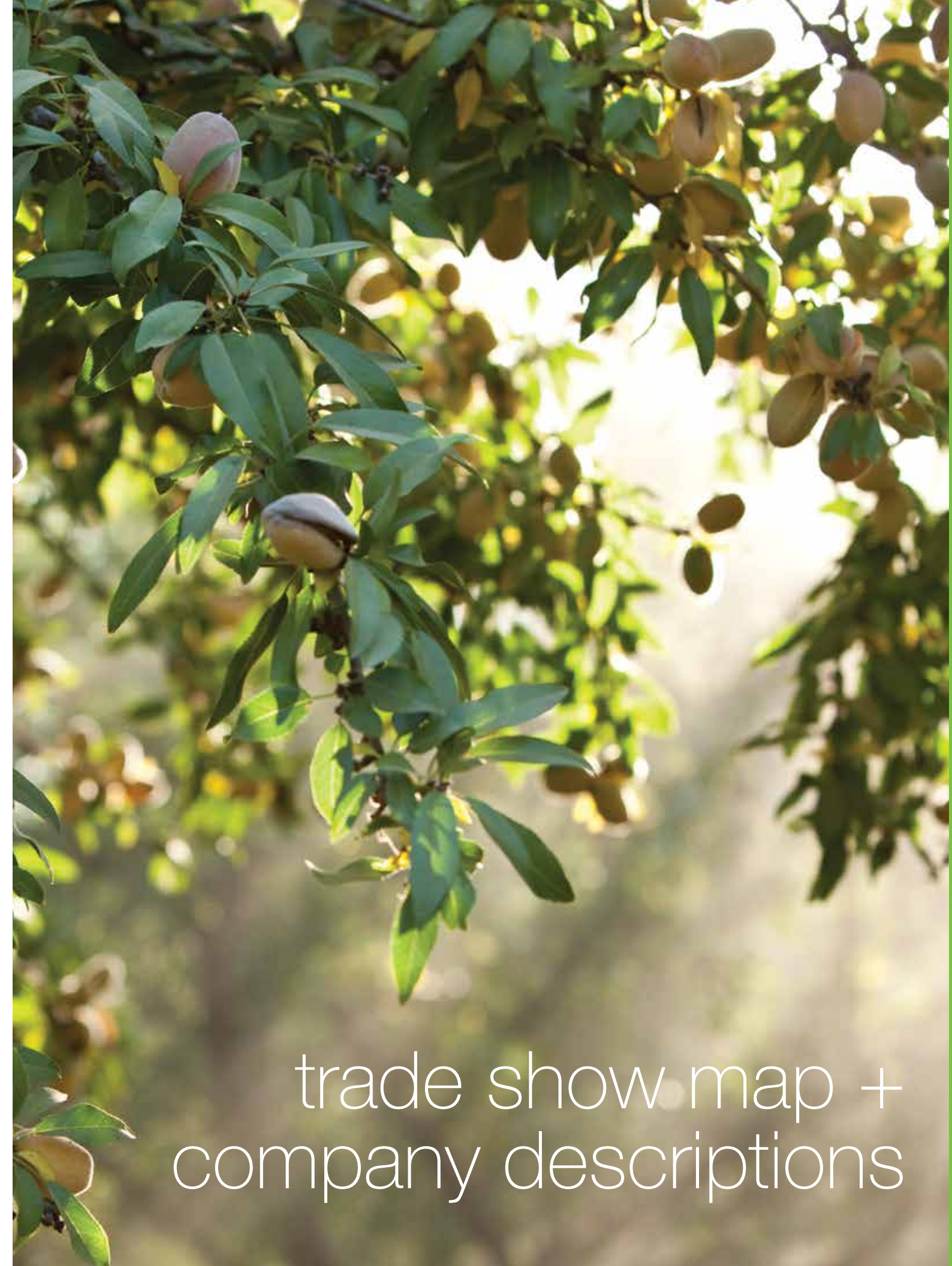
Exceptional clonal rootstocks to improve almond orchard productivity, uniformity and health.

www.p2g.us.com

Beeler INDUSTRIES

QUALITY PROCESS SYSTEMS | DESIGN | INTEGRATION

www.beelerindustries.com



trade show map + company descriptions

DEEP RIPPING

Make: Caterpillar
Model: D11R
Year: 2005
SN: 792
HP: 550
WT: 230,580 LBS

WALNUTS

High Angle Hedging up to 45'
High Hedging up to 48'
Newer Hedging (down to 2')
Topping up to 25'

ALMONDS

Sun Harvest Inc.
www.OrchardService.com
800.791.2212

Robert Maragliano Jr. 209.482.0226

MECHANICAL ORCHARD PRUNING

Creating the Future
SATAKE
www.satake-usa.com

Optical Sorting to the Highest Standards
EVOLUTION®

Satake USA, Inc.
West Coast Operations
Modesto, California U.S.A.
jsargent@satake-usa.com

Tel: 209 551 3203
Fax: 209 551 0841

trade show map +
company descriptions

trade show



THANK YOU TO ALL OUR SPONSORS

- | | | |
|---------------------------------|-------------------------------|-------------------------------|
| Agro Culture Liquid Fertilizers | Compass Minerals | Ripon Manufacturing Co., Inc. |
| Ambassador Energy | Duarte Nursery | Satake |
| August Töepfer & Co. | Farm Credit Alliance | Sun Harvest, Inc. |
| BASF | Flory Industries | Syngenta |
| Beeler Industries | FMC Corporation | Turkhan Foods |
| Borrell USA Corp | GrassWorks Weed Wiper | Wellmark |
| Bühler Group | Harris Woolf Almonds | Yara North America, Inc. |
| Burchell Nursery | JKB Energy | Yosemite Farm Credit |
| California Chapter ASFMRA | M. Parise Associates | |
| Citibank | Orchard Machinery Corporation | |

Please note that the actual layout of the exhibit hall may change depending on the equipment and products being showcased.

booths + exhibitors

- | | | |
|--|---|--|
| P1 Project Apis m. | 412 Triple/S Dynamics | 911 Dickey-John Corporation |
| P2 California State Beekeepers Association | 414 OMIC USA, Inc. | 912 Irrigation Solutions, Inc. |
| P3 University of California, Agriculture and Natural Resources | 416 Donaldson Company | 913 Brandt Monterey |
| 211 Rears Manufacturing | 417 Bühler Group | 914 Lodi Irrigation |
| 212 Green Tree Nursery | 418 DuPont Crop Protection | 915 Wellmark |
| 213 Grimbleby-Coleman | 435 Westbridge Agriculture Products | 917 GreenLeaf Ag |
| 214 Blue Mountain Minerals | 437 Fischbein Company | 919 Duarte Nursery |
| 215 Nutrient Technologies | 439 CVsag | 936 Burchell Nursery |
| 216 Roberts Retirement Group | 441 PureSense | 937 Vogel Sales Engineering |
| 217 Durham Pump, Inc. | 501 Exact Harvesting | 938 Hamilton Energy Solutions |
| 218 California Industrial Rubber | 502 Select Harvesting USA | 1001 Agrinos |
| 221 Satake | 504 Harmon Systems International, LLC | 1002 CoreAgri, LLC |
| 222 Bank of the West | 505 Motion Industries | 1004 Valent USA |
| 224 Elk Grove Dodge | 506 Waterford Irrigation Supply, Inc. | 1005 Sterilization and Fumigation Services |
| 225 Key Dollar Cab, LLC | 507 Decagon Devices, Inc. | 1006 SWECO |
| 226 Elk Grove Dodge | 508 Netafim USA | 1007 PG&E |
| 227 Key Dollar Cab, LLC | 509 Amiad Water Systems | 1008 Eurodrip USA |
| 228 Elk Grove Dodge | 510 CPM Wolverine Proctor LLC | 1009 FMC Corporation |
| 229 Simplot Grower Solutions | 511 Erick Nielsen Enterprises | 1010 Dynamic Coating, Inc. |
| 230 Elk Grove Dodge | 513 Certified Laboratories | 1011 ToxiMet Ltd. |
| 231 Marrone Bio Innovations | 536 Weiss McNair LLC | 1012 A&L Western Agricultural Laboratories |
| 232 Mid-Pacific Industries | 537 M. Parise Associates | 1013 Helio Power |
| 235 Pattyn North America, LLC | 538 California Farm Bureau Federation and California Bountiful Foundation | 1014 Hughson Nut, Inc. |
| 236 Bayer CropScience | 540 Redox Chemicals, LLC | 1015 Mid State Huller and Sheller/ Golden Gate Nut |
| 237 Delta Technology Corporation | 542 CropTrak | 1016 Ambassador Energy |
| 238 Bayer CropScience | 601 JackRabbit | 1017 SureHarvest |
| 240 Bayer CropScience | 606 Baicor, LLC | 1018 Wilkey Industries |
| 242 Bayer CropScience | 610 Food Safety Net Services | 1019 Stanislaus Implement & Hardware |
| 301 Orchard-Rite - Pacific Distributing | 612 Diamond K Gypsum, Inc. | 1021 Jain Irrigation, Inc. |
| 303 Arysta LifeScience | 614 Holz Rubber | 1025 Syngenta |
| 305 Fruit Growers Laboratory, Inc. | 618 BASF | 1029 Western Growers Insurance Services |
| 307 Polymer Ag, Inc. | 628 Almond Board of California | 1031 Nelson Manufacturing Company, Inc. |
| 309 Plant Food Systems | 630 Flory Industries | 1033 The Nursery Company |
| 311 Sierra Gold Nurseries | 701 Actagro, LLC | 1035 Recology |
| 312 VICAM | 703 Fowler Nurseries | 1037 Kamper Fabrication |
| 313 Dow AgroSciences | 705 Compass Minerals | 1101 Spectrum Technologies |
| 314 Turkhan Foods | 707 Mac Process | 1102 International Distribution Partners nv |
| 315 Dow AgroSciences | 709 Mac Process | 1103 Boyett Petroleum |
| 316 Nelson Irrigation Corporation | 711 Agro-Culture Liquid Fertilizers | 1104 Delta Wireless, Inc. |
| 317 DuraTech Industries | 737 Orchard Machinery Corporation | 1105 Sun Harvest, Inc. |
| 318 Fly Away Pest Control, Inc. | 801 Macro Plastics & TranPak, Inc. | 1106 Western Fruit Growers |
| 319 Beeler Industries | 802 Nufarm | 1107 Gowan USA, LLC |
| 321 Red Barn/Progressive Ag Sprayers/Northwest Tillers, Inc. | 804 Aqua Measure Instrument Co. | 1108 Magnation Water Systems |
| 325 Borrell USA Corp | 805 Agrimar Corporation | 1109 Revtech |
| 326 Dave Wilson Nursery | 806 Gowan Company | 1110 Academy Irrigation |
| 328 Hortau, Inc. | 807 Helena Chemical | 1111 The Solar Company |
| 330 Agri-Valley Irrigation, Inc. | 808 Mana, Inc. | 1112 Dixon, Hughes, Goodman LLP |
| 332 Bowsmith, Inc. | 809 Helena Chemical | 1113 Acadian Seaplants Limited |
| 337 Kingsburg Cultivator - Pacific Western | 810 Deerpoint Group, Inc. | 1114 Microbiology International |
| 338 Air-O-Fan Products Corp | 811 Packaging Innovators Corporation | 1115 Crop Production Services |
| 401 Pacific Southwest Irrigation Corporation | 813 Yosemite Farm Credit | 1116 Pollen Bank |
| 402 ORO AGRI | 818 JKB Energy | 1117 Precision Agri-Lab |
| 403 Verdegaa Brothers, Inc. | 821 Farm Credit Alliance | 1118 West-Link Corporation |
| 404 International Wood Industries | 825 RF Biocidics | 1119 Yara North America, Inc. |
| 405 Schaben Industries | 826 P2G - Progressive Genetics Group | 1120 Caltec Ag, Inc. |
| 406 Toro Micro-Irrigation | 835 BioFlora | 1122 G&F Agri Services |
| 407 Modern Process Equipment, Inc. | 837 H.G. Makelim Co. | 1125 Bubco, Inc. |
| 408 NABTA USA International, Inc. | 901 Cleanfix North America | 1127 Fresno Madera Farm Credit |
| 409 Style-Line Construction | 903 CalWest Rain | 1128 Soil Basics Corporation |
| 410 San Joaquin Systems | 905 R.F. MacDonald Company | 1129 NutStar Software |
| 411 Visys - Advanced Sorting Solutions, Inc. | 906 IEH Laboratories and Consulting Group | 1130 SolarCity |
| | 907 PBM Supply & Mfg., Inc. | 1131 Agrium Advanced Technologies |
| | 909 Band-It Spreading Service | |
| | 910 Valley Tool & Mfg Co, Inc. | |

booths + exhibitors cont.

1132 Van de Sandt Construction BV
 1133 Klippenstein Corporation
 1135 JenJil Packaging, Inc.
 1136 Log5/Koco
 1137 Smartcube®/ABM Scale/
 JEM-ESP/Central Valley
 Software Design
 1138 David Allred – Sculptor
 1201 Cablevey Conveyors
 1202 Suterra, LLC
 1203 Garton Tractor, Inc.
 1204 Certis USA
 1205 Phenix Equipment, Inc.

1206 Quali Tech, Inc.
 1207 DFA of California
 1209 Hotsy Pacific
 1210 Cenergy Power
 1212 Cenergy Power
 1214 FBSciences, Inc.
 1216 GrassWorks Weed Wiper
 1218 Wells Fargo Insurance Services
 1225 Agra Services
 1226 New Era Farm Services, Inc.
 1227 Elk Grove Dodge
 1228 Soil Basics Corporation

1229 Elk Grove Dodge
 1231 Elk Grove Dodge
 1233 Elk Grove Dodge
 1234 Integrated Structures, Inc.
 1235 Bayer CropScience
 1236 Lionudakis

exhibitor + sponsor descriptions

A&L WESTERN AGRICULTURAL LABORATORIES • BOOTH 1012
 Robert Butterfield • rbutterf@al-labs-west.com • 209-529-4080 • 1311 Woodland Avenue, #1 • Modesto CA 95351

A&L Western Agricultural Laboratories is a full-service agricultural and environmental testing laboratory. A&L Laboratories is a participating ALP and NAFT soil and plant testing laboratory, employing approved methodologies for soil and plant analysis.

ACADEMY IRRIGATION • BOOTH 1110
 Becky Phene • beckyphene@gmail.com • 559-313-9456 • 13089 E. Wiregrass Lane • Clovis CA 93619

Academy Irrigation and Summit Agronomics have teamed together to provide the best source for water management and irrigation advising. We base our business on remote sensing, research-grade instrumentation by Decagon Devices, Inc. and 25+ years of horticultural experience. See how much water is in the soil and how much of that is available to plants. We install and service field-ready environmental sensors and data loggers, which require no external power source. You have easy internet access to the data 24/7. Concerned about groundwater? We have options for monitoring flow rates in unsaturated soils and collecting soil water samples for analysis.

ACADIAN SEAPLANTS LIMITED • BOOTH 1113
 Marta Koziol • mk@acadian.ca • 902-468-2840 • 30 Brown Avenue • Dartmouth Nova Scotia • Canada

Acadian Seaplants is the world leader in seaweed-based solutions for humans, animals and plants. Through its gentle extraction processes, Acadian captures and preserves the valuable, nutritional qualities of fresh seaweed in the final product for maximum benefit. Rich in beneficial compounds, Acadian is derived from *Ascophyllum nodosum* seaweed. Acadian is designed to enhance crop productivity by addressing specific benefits based on each crops' unique needs, including increasing nutmeat yield and reducing post-harvest stresses. With three decades of scientifically proven results, Acadian is an ideal natural ingredient that ensures the production of healthy, productive plants.

ACTAGRO, LLC • BOOTH 701
 Ersilia Lacaze • lacaze@actagro.com • 559-579-1239 • 4516 N. Howard • Biola CA 93606

Actagro, LLC is a global leader in plant nutrient technology. Our organic, acid-based products are highly effective when used with plant nutrients and are a unique class of plant nutrition products, based on proprietary technologies. Complex with primary, secondary and micronutrients to formulate specific blends, Actagro products are designed to complement conventional plant nutrition and to meet the needs of progressive and profitable growers and dealers throughout the United States and other countries.

AGRA SERVICES • BOOTH 1225
 Bob McGowan • bob@agra-trading.com • 530-894-1782 • 60 Independence Circle, Suite 203 • Chico CA 95927

Agra Services provides growers with high-quality, natural fertilizers and soil amendments. We carry True Organic liquid and dry pelletized fertilizer. We have competitive pricing for gypsum and lime delivery and spreading service. We sell compost derived from grape pomace and pruning waste. Composted poultry and dairy manures are available, as well as worm castings and ash. New products include mycorrhizae formulations by Mycorrhizal Applications and an aerobic microbial solution called Yields Max developed by Organics Alive that inoculates both soil and foliage with beneficial microbes. Our newest product is a nontoxic wood sealant for tree posts and beehives.

AGRI-VALLEY IRRIGATION, INC. • BOOTH 330
 Larry Rompal • larry@agrivalley.com • 559-486-1412 • P.O. Box 11881 • Fresno CA 93775

Agri-Valley Irrigation, Inc. founded in 1983, has developed into a firm that provides a unique irrigation service to the San Joaquin Valley agriculture community. Agri-Valley can engineer, design, fabricate, install and maintain your project regardless of size. We carry a large inventory of parts at each of our locations: Fresno, Firebaugh, Five Points, Merced, Bakersfield and Visalia. Our field staff of installation and service personnel are radio dispatched and considered the finest in the industry. Our installations include mechanical sprinklers, drip irrigation systems, subsurface systems, PVC transport systems, solid set sprinklers and all aspects of aluminum pipe.

AGRIMAR CORPORATION • BOOTH 805
 Scott Arnold • jsapfi@aol.com • 559-250-1628 • 764 N. Leonard • Fresno CA 93737
 Everyone knows a good nut set guarantees a high fertilization rate and rapid growth of the young nut. At this point, a quality nut set directly influences the number of nuts and their development. During this crucial period, you must leave nothing to chance. Poor flowering irreversibly compromises your financial profits at harvest. Being on your guard and knowing how to choose the best ally will allow you to give nature the helping hand required for your success. Goëmar BM 86 is the proven ally for this critical period. Bloom Time is Goëmar Time. Independently Tested... Field Proven.

AGRINOS • BOOTH 1001
 William Abildgaard • mark.abildgaard@agrinos.com • 707-252-8000 • 550 Gateway, #100 • Napa CA 94558

AgriNOS is a green technology company committed to improving the productivity and decreasing the environmental impact of modern agriculture. Our products help farmers increase crop productivity and efficiency. AgriNOS' proprietary technologies promote crop development at key points in the growth cycle. With specific solutions for a variety of crop categories, the technology comprising the HYT products have demonstrated its value in more than 1,500 trials in key agricultural regions worldwide.

AGRIUM ADVANCED TECHNOLOGIES • BOOTH 1131
 Gary Brummet • gbrummet@agriumat.com • 559-429-9002 • 106 King Street • Exeter CA 93221

Manufacturer of Enhanced-Efficiency Fertilizers.

AGRO-CULTURE LIQUID FERTILIZERS • BOOTH 711 • SPONSOR
 Armando Gutierrez • armando.gutierrez@agroliquid.com • 916-200-9430 • 7200 Jacinto Avenue • Sacramento CA 95823

High-production agriculture meets environmentally responsible nutrient management at Agro-Culture Liquid Fertilizers, the research-driven fertilizer company for today's crops and tomorrow's growers. Our products allow the application of more usable plant food and in smaller quantities; yet, by stressing the importance of balanced formulations that include micronutrients, they achieve the same, and often better, results. We understand that advanced crop-fertility products and agricultural practices come from research and applied technology. Our entire line of high-performance fertilizers and supplements are formulated to help growers achieve the best possible yields, while employing sustainable agricultural practices.

AGSOURCE MAGAZINE
 Dariene Airola • dariene@agmag.com • 559-679-7195 • 4500 S. Laspina, Suite 226 • Tulare CA 93274

AgSource Magazine is the only California-based ag publication that reaches any and all aspects of the Agricultural Industry. Becoming the Official Equipment Publication of the World Ag Expo in 2006 has made our 16 years in business even more successful. By printing 30,000 magazines each month, which are distributed at hand-selected locations throughout California, and having our magazine online, we have established a readership and following like no other. We are THE SOURCE for all ag-related wants and needs and can promote any ag-related company successfully! Visit www.agmag.com.

AIR-O-FAN PRODUCTS CORP • BOOTH 338
 Brent Davis • brent@airofan.com • 559-638-6546 • 507 E. Dinuba Avenue • Reedley CA 93654

Air-O-Fan is a family-owned-and-operated business, established in 1945. Today's Air-O-Fan sprayers include four diesel engine-powered models offering 500, 600 and 1,000-gallon tank options and have fan diameters ranging from a single 40-inch to dual 45-inch fans for orchard application. Air-O-Fan's PTO drive machinery includes 10 models, ranging from 300- to 1,000-gallon, 30-inch to 38-inch fans, for orchard and vineyard applications and a full line of quality herbicide sprayers to cover your weed-spraying needs. Despite humble beginnings in a small California town, Air-O-Fan is now known by California growers as the Cadillac of sprayers, and we thank you for the business!

ALMOND BOARD OF CALIFORNIA • BOOTH 628
 Jenny Konschak • jkonschak@almondboard.com • 209-343-3248 • 1150 9th Street, #1500 • Modesto CA 95354

Leading the California Almond industry through research represents the foundation of the Almond Board's commitment to support the industry's goal of maintaining healthy orchards using environmentally sound practices and providing customers with a safe, wholesome and enjoyable food product. Through these research efforts, programs and resources have been created to assist growers, handlers and allied industry members in this process. Among these is the California Almond Sustainability Program, which provides growers with a mechanism to document and quantify sustainable almond-growing practices. Almond Board staff and chairpersons are available to discuss Board administration, the leadership program, global marketing, and health and nutrition research programs at the ABC booth. Stop by the booth to sign-up as a participant for the USDA-NASS Census, Almond Sustainability Program and Almond Leadership Program today!

AMBASSADOR ENERGY • BOOTH 1016 • SPONSOR
 Jack Wilkey • jack@wilkeyindustries.com • 209-656-0561 • 803 E. Keyes Road • Ceres CA 95307

Ambassador Energy/Sybac Group is not only California's most credentialed solar leader with 100s of megawatts of solar installed, but is also the company that trains other solar companies! What does that mean to you? AE's contractor licenses C10/Electrical, C46/Renewable Energy, B/General and elite NABCEP credentials, coupled with Sybac's 100s of globally installed megawatts of solar, assures you the best design, engineering and installation expertise possible! NABCEP is the gold standard for the solar industry in America. We are not only accredited, but are one of only a few NABCEP trainers nationwide. See the solar experts at booth 1016.

AMIAD WATER SYSTEMS • BOOTH 509
 Matt Aguair • matt@amiadusa.com • 800-969-4055 • 2220 Celsius Avenue • Oxnard CA 93030

Amiad Water Systems is the industry leader in self-cleaning, filter-screen technology. These automatic water filters are commonly used for irrigation waters, protecting sprinklers, jets and drip emitters. These filters provide the lowest back-flush volume of water without interrupting system flow. We also provide disk, manual and semiautomatic filters.

AQUA MEASURE INSTRUMENT CO. • BOOTH 804
 Roberta Castillo • rcastillo@aquameasure.com • 909-941-7776, Ext. 223 • 9567 Arrow Route, Suite E • Rancho Cucamonga CA 91730

Aqua Measure Instrument Co. (Div. Moisture Register Products) of Rancho Cucamonga, California, is a long-time, near-exclusive supplier of instantaneous, nondestructive laboratory moisture meters for the almond industry. Calibration tables are available for whole almonds (blanched and natural), in shell, meal/diced, sliced and slivered. The Model MCPC is California State approved (Div. of Measurement Standards, Dept. of Food and Agriculture, Cert. #2961-88). Aqua Measure also offers online radio frequency and infrared meters for nondestructive moisture analysis. Bulk moisture measurement can be accomplished with the new RF Probe bucket meter, which holds 10-20 pounds. All meters are applicable to pistachio, pecan, walnut and other nut moisture measurement.

Join us at
Cafeteria 15L
 Wednesday Night 5:30pm
 Following the Social Hour
 (15th and L street)

Almond Trees

Uniform Growth, Higher Production,
 Proven Performance

- Brights Hybrid. 5*
- Brights Hybrid. BB106*
- Controller. 9.5
- Empyrean. 1*
- Hansen 536
- Kyrmsk. 86*
- Lovell
- Nemagaard



Clean Plants
 For Your Future

1-800-GRAFTED

sales@duartenursery.com
 www.duartenursery.com • Hughson, Ca.



DUARTE
 TREES & VINES

trade show map + company descriptions

ARYSTA LIFESCIENCE • BOOTH 303

Phil Reding • phil.reding@arystalifescience.com • 916-768-2683
 • 5660 Stonehaven Court • Granite Bay CA 95746

Arysta LifeScience is one of the largest privately held crop protection and life science companies that specializes in the marketing and distribution of innovative solutions for today's dynamic marketplace. For almond growers, our family of fungicides anchored by PH-D® along with Iprodione and CAPTAN offers protection from harmful diseases (including Alternaria, brown rot and blossom blight) with minimal restrictions. Specifically, with its unique mode of action, PH-D is a broad-spectrum fungicide with a strong resistance-management tool to control strobilurin-resistant Alternaria, particularly in almonds. Visit www.arystalifescience.us to learn more.

AUGUST TÖPFER CO. • SPONSOR

Kristin Richter • kristin.richter@atco.de • 49(0)40.32003-274
 • Raboisen 58, D-20095 • Hamburg Germany D-20095

With 100 years of history and experience August Töpfer & Co. (GmbH & Co.) KG is a leading importer of sugar, dried fruits and nut kernels in the European Union. We obtain our raw materials direct from reliable sources—ATCO's partners of many years' standing—in the country of origin. Our clients include the leading European retail and discount companies and the confectionery industry.

BAICOR, LLC • BOOTH 606

Elke Brown • elke@baicor.com • 435-752-2475 • 1895 North 600 West
 • Logan UT 84321

Baicor, LLC is a manufacturer of fertilizers specializing in liquids for foliar and soil applications. Baicor brings these exceptional products to you. The line of Baicor plant nutrients is 100% environmentally friendly and organically based. Each is specifically formulated to provide the optimum level of nutrients that plants need. Baicor uses products that include all essential nutrients required for plant growth and development.

BAND-IT SPREADING SERVICE • BOOTH 909

Alex McLeod • alexandergr8@msn.com • 209-614-5528 • 333 W. Linwood
 • Turlock CA 95380

Accuracy unparalleled in the industry, we are a family-owned business that has been serving clients for 20 years in Stanislaus, Merced and San Joaquin counties. Our patent-pending machines use precision technology to achieve an accurate weight, tree after tree. Band-It saves the grower money by placing dry fertilizer strategically where it needs to go, using various placement patterns. Would you like to know just how accurate we are? Stop by our booth.

BANK OF THE WEST • BOOTH 222

Casey Garten • casey.garten@bankofthewest.com • 916-552-4355
 • 500 Capital Mall, Suite 1200 • Sacramento CA 95814

Bank of the West's continued commitment to agribusiness has made us the second largest agriculture lender headquartered in California and third largest in the United States. For more than 20 years, we have been a consistent provider of financial services to agriculture, regardless of the economic climate. We offer a variety of financial services to meet your specific needs, including Development Loans Real Estate Loans Working Capital Lines of Credit secured by accounts receivable Crop Lines of Credit to support your annual cultural and harvest expenses; Cash Management Services and Interest Rate Production Products that can help reduce fluctuating interest rates.

BASF • BOOTH 618 • PREMIER SPONSOR

Troy Schlundt • troy.schlundt@basf.com • 209-604-3360
 • 2060 North Quincy Road • Turlock CA 95382

No matter what crop you grow, BASF Crop Protection delivers innovative solutions to help you get the most out of every acre. The BASF portfolio includes a variety of herbicides, fungicides and seed treatment technologies that provide the highest level of crop protection. BASF invests \$573 million each year in research and development of new chemistries, resources and tools to help growers, retailers and distributors, consultants, industry partners and students find solutions. At BASF, our goal is yours: healthier plants, higher yields and greater profit potential. Learn more at www.agproducts.basf.us.

BAYER CROPSCIENCE • BOOTHS 236, 238, 240, 242

Kelly Benarath • kbenarath@agraquest.com • 530-746-3389 • 1540 Drew Avenue
 • Davis CA 95618

Experience the latest in bio-solutions with Bayer CropScience's mobile laboratory. Through the interactive lab stations and onboard scientist, discover the unique science behind SERENAIDE SOIL, BIO-TAM and OPTIVA.

BAYER CROPSCIENCE • BOOTH 1235

Andrew Nielsen • andrew.nielsen@bayer.com • 209-202-9709
 • 2366 Semillion Court • Oakdale CA 95361

As a leading solutions provider in the production of high-quality food, feed, fiber and renewable resources, Bayer CropScience is committed to helping agriculture grow strong by supplying a best-in-class research pipeline that comes from excellence in innovation and building upon an extensive and well-balanced portfolio of high-performance herbicides, insecticides, fungicides and seed treatment products. Learn more about our innovative products and solutions in cereals, corn, cotton, citrus, potatoes, canola, soybeans, vegetables, tree fruits and nuts at bayercropscienceus.com.

BEELER INDUSTRIES • BOOTH 319 • SPONSOR

Mike Beeler • derek@beelerindustries.com • 209-545-0740 • 4664 Kiernan Court
 • Salida CA 95368

Beeler Industries is dedicated to the art of design, integration and commissioning of tree-nut processing systems. Our mission is partnering quality products with sound designs for maximum grower return in the global market.

BIOFLORA • BOOTH 835

Barbra Evans • receptionist@globalorganicsgroup.com • 623-932-1522
 • 4050 S. Sarival Avenue • Goodyear AZ 85338

BioFlora is the leading provider of biological nutrients for sustainable and fertile soil and plant development. Combining 40 years of expertise, a proprietary and patented technology, BioFlora offers an unprecedented wealth of industry knowledge, innovative processes and solutions, as well as customized products and services. BioFlora's balanced approach is an established and sustainable practice, which plays a vital role in the well-being of the planet and all living organisms.

BLUE MOUNTAIN MINERALS • BOOTH 214

Christina Johnson • cjohnson@bluemtnmin.com • 209-533-0127, Ext. 12
 • 24599 Marble Quarry Road • Columbia CA 95310

Blue Mountain Minerals is located in the Sierra Nevada Foothills and is the largest producer of limestone products in Northern California. We produce agricultural limestone and dolomitic limestone that is OMRI listed, high quality and consists of natural minerals used to condition and enrich crop soil.

BORRELL USA CORP • BOOTH 325 • GOLD SPONSOR

Charles Boddy • charles@jborrell.com • 209-526-7735 • Merced Airport Industrial Park, 260-262 Riggs Avenue • Merced CA 95340

Borrell USA Corp proudly announces the grand opening of our Merced facility offering a demonstration area, showroom and technical support for our growing customer base in California. Here we can show all our very latest technology, ranging from blanchers, processing and pasteurizing equipment through to our latest generation of hullers, shellers and our new family of gravity-tables featuring our latest smart sorter. We welcome the challenge to prove our newest addition and demonstrate that it cleans meats like no other machine can! We look forward to seeing you in Merced!

BOWSMITH, INC. • BOOTH 332

Kari Grove • kgrove@bowsmith.com • 559-592-9485 • 131 Second Street
 • Exeter CA 93221

Fan-Jet & Fan-Jet Plus microsprinklers designed, built and backed by Bowsmith. Introduced in 1977, Fan-Jet microsprinklers irrigate efficiently over a larger wetted area than drip, aid in frost protection and cost less than other types of sprinklers. In 2006, the revolutionary Fan-Jet Plus microsprinkler was introduced. It combines the quality of the original Fan-Jet microsprinklers with the added feature that prevents clogging pattern, due to insects and other external objects.

BOYETT PETROLEUM • BOOTH 1103

Carl Haney • chaney@boyett.net • 209-988-0695 • 601 McHenry Avenue
 • Modesto CA 95350

Boyett Petroleum is a family-owned Modesto-based company since 1934. Today, Boyett Petroleum is a wholesale supplier to over 400 fuel stations, including Valero, ARCO, 76 and Shell and has an ownership interest in over 40 retail sites under the brand name Boyett Petroleum or Kwik Serv. Boyett Petroleum is a major supplier to agricultural and commercial users of gasoline, diesel and red-dye diesel fuel. Both locally and throughout the state, Boyett Petroleum has been exemplified by many businesses and citizens for their strong family values, honest business practices and active community involvement. For more information, please visit www.boyettpetroleum.com.

BRANDT MONTEREY • BOOTH 913

Christy Morgan • christy.morgan@brandtmonterey.com • 539-499-2100
 • P.O. Box 35000 • Fresno CA 93745

Brandt Monterey has always strived to deliver value to our customers and suppliers through unparalleled customer service, product support, logistics, technical sales support and manufacturing capabilities. Concentrating mainly in the Western United States, we continue to function as a wholesale distributor of nutrients and pesticides to the agricultural, horticultural, lawn, garden and feed industries. We continue to be an innovator in the agrichemical industry, bringing new technologies and products to the ever-changing marketplace. You can visit us online at www.brandtmonterey.com.

BUBCO, INC. • BOOTH 1125

Bubba Simmacher • bubba@bubco.com • 209-367-3883 • P.O. Box 1840
 • Lodi CA 95241

We provide low-volume sprayers that can reduce your chemical cost by 50%. Our Orchard Special is adjustable and designed to cover the whole row, trunk to trunk or under the tree only. Aerway aerators open up the ground for water penetration. FAE offers a wide range of mulching, rock-crushing and soil-stabilizing equipment. The Land Pride line has over 200 tractor attachments for your farming needs. We also offer a tractor-mounted hedger for light trimming and maintenance.

BÜHLER GROUP • BOOTH 417 • SILVER SPONSOR

Diana Mendez • diana.mendez@buhlergroup.com • 209-983-8400
 • 2385 Arch-Airport Road, Suite 300 • Stockton CA 95206

Bühler is a global specialist and technology partner for plant, equipment and related services for processing basic foods. In the area of nut processing, Bühler offers companies complete systems and individual machines that are both highly economical and extremely gentle to the product. Bühler can assist with material handling, cleaning (including optical sorting from Bühler Sortex), drying and roasting technology (Bühler Barth and Buhler Aeroglide) and last but not least the CCP (Controlled Condensation Process), a pasteurization process for low-moisture foods like nuts. Please visit us at our booth to learn how we can add value to your almond products.

BURCHELL NURSERY • BOOTH 936 • SPONSOR

Ron Boone • ronb@burchellnursery.com • 209-845-8733
 • 12000 State Highway 120 • Oakdale CA 95361

Burchell Nursery has been passionate about improving the almond industry for more than 70 years. Our proven track record of successful varieties includes Monterey, Fritz, Avalon, Wood Colony, Carmel, Livingston and the newest varieties, Capitola and Supareil, more than any other commercial nursery. Our pursuit of superior varieties continues with self-fruitful varieties, better rootstocks, certified virus-free trees and practical service that is second to none. Burchell Nursery is also the only nursery with an in-house breeding program. So, if you are as passionate about almonds as we are, look no further than Burchell Nursery to support your needs.

CABLEVEY CONVEYORS • BOOTH 1201

Larry Van Zee • karl.seidel@cablevey.com • 641-673-8451 • P.O. Box 148
 • Oskaloosa IA 52577

Cablevey Conveyors is a tubular drag conveyor that moves tree nuts, peanuts and other nuts gently. Moving your almonds and other nuts gently will eliminate breakage. Keeping your product intact has been the goal since Cablevey Conveyors began in 1971. Your friable and valuable nuts are moved gently by slow-speed conveying using cables and discs without the introduction of air, vacuums, pneumatics or bucket systems. Plant managers and engineers rely on Cablevey systems for ease of use, installation, cleaning and reliability. Moving products gently is the Cablevey way to convey. Visit cablevey.com.

CALIFORNIA FARM BUREAU FEDERATION AND CALIFORNIA BOUNTIFUL FOUNDATION • BOOTH 538

Kate Tscharnier • ktscharnier@cfbf.com • 916-561-5601 • 2300 River Plaza Drive
 • Sacramento CA 95833

California Farm Bureau Federation (CFBF) is a grassroots organization of 53 California county farm bureaus working on behalf of California's farmers and ranchers to protect the farming way of life. By promoting California agriculture throughout the state, CFBF helps to ensure Californians and people around the globe can continue to have access to commodities that meet the highest quality standards in the world. The California Bountiful Foundation was created to cultivate a better understanding of the many benefits rural landscapes provide to all Californians. Projects that are included consist of public outreach, education and research.

CALIFORNIA INDUSTRIAL RUBBER • BOOTH 218

Andy Campos • andy@cir.net • 530-674-2444 • 1690 Sierra Avenue
 • Yuba City CA 95993

California Industrial Rubber Co. has been closely associated with almond growers and processors since our inception in 1958. We provide all types of belting, hoses, water-jet cutting, cab glass, magnetics, shear rollers and belts, custom steel and s.s. fabrication, bearings, motors and gear boxes, harvester parts, etc. Many of the products we provide are the direct result of working relationships with end-users, our ability to solve problems in the field and our innovative approach to this dynamic market. In addition to our manufacturing facilities in Fresno and Yuba City, we have branches strategically located in Bakersfield, Tulare, Merced, Fresno, Yuba City and Sparks, Nevada.

CALIFORNIA STATE BEEKEEPERS ASSOCIATION • BOOTH P2

Mike Tolmachoff • manddhoney@gmail.com • 559-974-4042 • 5307 Jeppson Court
 • Salida CA 95368

Organized in 1889, the purpose of the California State Beekeepers Association is to educate the public about the beneficial aspects of honey bees, advance research beneficial to beekeeping practices, provide a forum for cooperation among beekeepers and support the economic and political viability of the beekeeping industry.

CALTEC AG, INC. • BOOTH 1120

John R. Monnich • jmonnich@calteccag.com • 209-575-1295
 • 1420 F Street, Suite 100 • Modesto CA 95354

Caltec Ag uses proven technology-based plant physiology to stimulate root health. Greenfeed foliar nitrogen applied to the plant reduces nitrate accumulation in soil and water, stimulates root proliferation, increases arginine production, brings blossom ovaries to conclusion and increases nut and fruit size without adding massive amounts of salt. Kelpak foliar organic seaweed extract, increases root mass production, pollen tube length and produces a longer pollination time. Terra Treat increases lateral water penetration of compacted soils to reduce water puddling and root decay. Lithovit, a calcium carbonate product, increases root activity by converting to calcium dioxide in leaf cells to increase chlorophyll content.

CALWEST RAIN • BOOTH 903

Ryan Hergenroeder • ryanh@calwestrain.com • 559-846-5326 • P.O. Box 306
 • Kerman CA 93630

CalWest Rain is the complete irrigation company from the largest, well-developing engines in the country to the last tiny designs and sells and services it all. Over 20 years ago, a San Joaquin Valley farming company felt a need to have both an irrigation and pump company as a supplier. The result of that need was an idea given by the grower to Larry Isheim and Jim Martin. Larry's expertise in design, installation and service of agricultural irrigation systems, combined with Jim's experience in pumps, created the company of CalWest Rain.

CENERGY POWER • BOOTHS 1210, 1212

Nader Yarpzeshkan • nader@cenergyppower.com • 760-603-1933
 • 3176 Lionshead Avenue, #11 • San Diego CA 92010

Cenergy Power is California's market-leading solar company for agriculture-related industries. Cenergy's turn-key solar solution of engineering, design, installation and monitoring guarantees superior workmanship and extends value to our customers. Cenergy has offices in Merced and San Diego, with satellite locations throughout the state. Please visit www.cenergyppower.com for more information.

CERTIFIED LABORATORIES • BOOTH 513

Denise Gorman • dgorman@certified-laboratories.com • 516-576-1400
 • 200 Express Street • Plainview NY 11803

Certified Laboratories of Northern California is a USDA-VASP-approved laboratory centrally located in the heart of the California Almond industry at our new, relocated facility in Turlock. We offer daily courier pickups and the most extensive range of testing services available to the nut industry. Our CertLabLink service offers the convenience of viewing testing results online. With internationally recognized accreditations, more than 50 years of Aflatoxin analysis experience and a scope of work second to none, Certified Laboratories is equipped to handle all your food safety needs. www.certified-laboratories.com

CERTIS USA • BOOTH 1204

Joe Lebow • jlebow@certisusa.com • 559-304-1601 • P.O. Box 121
 • Princeton CA 95970

Headquartered in Columbia, MD, Certis USA is a leading manufacturer and distributor of the largest line of biopesticide products for specialty agricultural and horticultural markets and the home and garden market. Certis USA products provide valuable solutions by meeting the challenges faced by today's growers who are seeking sustainable alternatives, resistant pest management and harvest solutions, and low pesticide residues for market flexibility and export accessibility. For more information about Certis USA or its products, visit www.CertisUSA.com.

CLEANFIX NORTH AMERICA • BOOTH 901

Don Smale • don.smale@cleanfix.org • 519-275-2808 • 90 Linton Avenue
 • Stratford Ontario N5A 2S3 • Canada

Cleanfix® Reversible Fans provide cooling system cleaning solutions to a wide range of agriculture and specialty industries where airborne debris clogs cooling systems. The problem: Radiators and air-intake screens get clogged. The results: Overheating of the engine, hydraulics, increased maintenance and higher fuel consumption. Cleanfix® Reversible Fans help prevent these problems automatically.

CITIBANK • SPONSOR

Veronica Lopez • veronica1.lopez@citi.com • 559-447-7460
 • 6715 N. Palm, Suite 208 • Fresno CA 93704

The Citibank Commercial Banking Group in Fresno, CA, is focused on working with medium and large companies in the Central Valley. The office is specialized in working with agricultural firms providing them with all of their business banking and financing needs.

COMPASS MINERALS • BOOTH 705 • SPONSOR

David Furbeck • furbeckd@compassminerals.com • 913-344-9348
 • 9900 West 109th • Overland Park KS 66210

Great Salt Lake Minerals (GSLM) is the largest North American producer of Sulphate of Potash (SOP), in addition to other micronutrient products.

COREAGRI, LLC • BOOTH 1002

Tracy Starich • tracy.starich@coreagri.com • 559-415-6274 • P.O. Box 1027
 • Arroyo Grande CA 93421

CoreAgri offers a full line of EDTA micronutrients, foliar sprays, humic acid, liquid magnesium nitrate and zinc sulfate solution both 10% and 12% zinc. CoreAgri operates a production facility in Hanford, California. In addition to micronutrients, CoreAgri is a leading supplier of sulfur bentonite and sulfur micronutrient products.

CPM WOLVERINE PROCTOR LLC • BOOTH 510

Charles Kovacs • kovacsc@cpmwolverineproctor.com • 215-443-5200
 • 251 Gibraltar Road • Horsham PA 19044

CPM Wolverine Proctor has supplied custom-designed dryers, roasters, coolers and specialized equipment to the food industry for more than 100 years. With over 500 peanut and tree nut installations worldwide, we are recognized as the leading supplier of dryers and roasters to this industry. Our equipment line includes dryers for in-hull almonds; blanched almonds; almond slices and slivers; toasters for diced, sliced and slivered almonds; roasters for whole, natural almonds and coated, seasoned almonds; steamers and plasticizers for whole, natural almonds. We welcome the opportunity to evaluate your requirements.

From huller to processor - Bühler has a solution for the almond industry. Offering complete systems and individual machines that are both highly economical and extremely gentle to the product. From material handling, cleaning, and SORTEX optical sorting, Aeroglide drying & roasting to a pasteurization process for a safe product, Bühler offers several technologies along the almond processing value chain. Visit booth 417 to find out what Bühler can do for you.

Buhler Aeroglide, Cary, NC; T 919 851 2000, aeroglide.sales@buhlergroup.com
 Buhler Sortex, Stockton, CA; T 209 983 8400, flo.rafael@buhlergroup.com
 Buhler Inc., Minneapolis, MN; T 763 647 9900, buhler.minneapolis@buhlergroup.com



CROP PRODUCTION SERVICES • BOOTH 1115

Bryan Unruh • bryan.unruh@cpsagu.com • 559-436-2900
• 7815 N Palm Avenue, Suite #410 • Fresno CA 93711

Crop Production Services continues to provide the highest level of service to the valley's almond industry. Our strength in Matching People, Science and Technology to Grower's Needs is the benchmark for superior plant nutrition and plant protection. Our licensed PCAs are supported by a technical team of field agronomists, environmental monitoring systems and our own soil, water and tissue laboratory; Precision Agri Lab.

CROPTRAK • BOOTH 542

Rob Wood • rob@croptrak.com • 800-787-8046, Ext. 101
• 9121 E. Tanque Verde, PMB 181 • Tucson AZ 85749

iCropTrak is an award-winning iPad farm management and field data collection mobile iOS app combined with a Cloud server for collaboration, consolidation of data, reporting and central iPad management. It supports farm planning, progress tracking, scouting, soil sampling, equipment management, work order management, time entry and much more. Use iCropTrak for daily resource management. Support payroll workflow improvement and activity-based costing. Prepare annual farm plans and farming budgets. Generate budget variance reporting. Understand efficiency and productivity metrics on a per acre basis.

CVSAG • BOOTH 439

Julie Locke • jlocke@cvstag.com • 559-686-6202 • P.O. Box 1947
• Tulare CA 93275

CVSag provides sustainable carbon-based solutions for increased water penetration, soil health and nutrient management.

DAVE WILSON NURSERY • BOOTH 326

Katie Amaral • kamaral@davewilson.com • 209-874-1821 • 19701 Lake Road
• Hickman CA 95323

Dave Wilson Nursery has been providing the almond industry with the highest-quality trees for more than 70 years. Our exclusive relationship with Zaiger Genetics has distinguished Dave Wilson Nursery from other nurseries by being the only nursery dedicated to providing growers with new inventions and progressive products for the almond industry, like our new Independence® almond and the acclaimed Atlas® and Viking® rootstocks. Stop by our booth to learn how these and other new innovations from Dave Wilson Nursery can help improve the productivity, efficiency and returns for your next planting.

DAVID ALLRED – SCULPTOR • BOOTH 1138

David Allred • dave@artistdavidallred.com • 530.243.2682 • 3120 Winding Way
• Redding CA 96003

Dave Allred, a graduate of the University of Utah School of Art, has developed novel techniques for his sculptures creating combinations of brass, copper, steel and wood. Most subjects celebrate human outdoor experiences. Collectors from every state in the U.S., most Canadian provinces and many in Europe, Japan, South America, New Zealand and Australia own and appreciate his sculpture. Awards and recognition have come in many exhibitions and shows. His work has shown in galleries and sold at more prominent names in the sporting world, including Abercrombie and Fitch, The Fly Shop, Eddie Bauer, Cabela's, Orvis and Wild Wings. www.artistdavidallred.com

DECAGON DEVICES, INC. • BOOTH 507

Scott Campbell • scott.campbell@decagon.com • 509-332-2756
• 2365 NE Hopkins Court • Pullman WA 99163

Moisture levels in almonds affect pricing, safety and quality. An accurate moisture reading gives growers a fair price and protects almonds from mold growth and aflatoxin production. With so many ways to measure moisture, differences in moisture readings can cause confusion. The Aqualab Water Activity Meter changes all this by measuring the water in almonds in five minutes with an AOAC approved method. Because our method is verified using independent standards, readings from growers, processors and government agencies can all agree. Stop by our booth to see how our instrument works.

DEERPOINT GROUP, INC. • BOOTH 810

Eva Kwong • ekwong@thedeerpointgroup.com • 559-224-4000
• 4339 N. Sellard Avenue • Fresno CA 93722

Deerpoint Group provides total water treatment for agricultural irrigation users. We provide a no-cost evaluation of the customer's irrigation system and water. Our turnkey systems include chemicals, monitoring and chemical-feed equipment that are serviced and managed by Deerpoint service representatives. Our products include CLEAR WATER (prevents the buildup of inorganic deposits in the irrigation system); DPG Continuous Chlorination (a safe, effective, economical system for controlling algae, bacteria and other biological debris preventing plugging of the irrigation system, and also controls root intrusion in buried irrigation systems) and BLUE WATER (a program using labeled copper sulfate to control algae and certain weeds in reservoirs used for irrigation.)

DELTA TECHNOLOGY CORPORATION • BOOTH 237

Chuck Denny • chuck@proedge-services.com • 713-464 7407 • 1602 Townhurst
• Houston TX 77043

Delta Technology is a world leader in the field of optical sorters. Through diligent and dedicated effort, we have continued to create technological innovations and a leadership position. We are a manufacturer, not an assembler. Not only are the designs of our own inventions, but all metal works and special components are made under our own roof, to the strictest industrial standards. This is the real guarantee of a quality product that will produce accurate results on a sustaining basis, day after day, year after year. Contact Delta Technology for your specific application needs.

DELTA WIRELESS, INC. • BOOTH 1104

Chet Ettinger • cettinger@deltawireless.com • 800-877-9611
• 1700 West Fremont Street • Stockton CA 95203

Delta Wireless, Inc. specializes in providing Solutions for Two-Way Radio Communication, Video Surveillance (CCTV) and Access Control Systems, In-Building Signal Reinforcement/Distributed Antenna Systems (DAS) for Cellular, Wi-Fi and Two-Way Radio Networks, WiLAN and Emergency Vehicle Upfitting. Our four Manufacturer Certified Service Centers are located in Sacramento, Stockton (HQ), Turlock and Atwater serving Northern California. Thank you and we look forward to serving you!

DFA OF CALIFORNIA • BOOTH 1207

Thomas Vogel • tomvogel@agfoodsafety.org • 916-561-5900, Ext. 104
• 710 Striker Avenue • Sacramento CA 95834

DFA of California was created more than 100 years ago to promote better understanding among growers, processors and purchasers of dried fruit and tree nuts. Today, DFA offers full-service food laboratories, technical research, product inspection, arbitration, international advocacy and much more. DFA of California is a nonprofit organization with voluntary membership, committed to safe food and serving the agricultural industry and consumers.

DIAMOND K GYPSUM, INC. • BOOTH 612

Kris Allred • kris@diamondkgypsum.com • 435-896-8870
• 1720 South Red Hills Drive • Richfield UT 84701

Diamond K specializes in the production of high-quality products for the agricultural industrial and pharmaceutical markets. Diamond K's unique technology offers ultra-fine, soluble products for the sprayable and fertigation markets. The unique process is designed to make blending "Ultra Fines" Sulfate of Potash, KMS and Premium 97 Solution Grade Gypsum into solutions for hassle-free distribution through any irrigation system. Diamond K also offers its second-to-none wetting agent, Aqua Drive, to increase the even movement and overall penetration of water. This is all tied together by the patented Diamond K applicator that was specifically designed, at great cost, to make fertigation simple.

DICKEY-JOHN CORPORATION • BOOTH 911

Scott Vincent • svincent@dickey-john.com • 217-438-5295
• 5200 Dickey-John Road • Auburn IL 62615

Dickey-John manufactures rugged, advanced-technology electronic products for agriculture and provides customers worldwide with moisture testing equipment, controllers, ground speed sensors, monitors and grain analysis computers. Dickey-John has more than 40 years of experience in moisture testing and grain analysis, covering multiple grains, nuts, rice and other commodities. From the introduction of the world's first grain moisture tester to the national standard GAC2500UGMA and the MINIGAC (the most accurate handheld tester in the world), Dickey-John is the industry leader in moisture testing.

DIXON, HUGHES, GOODMAN LLP • BOOTH 1112

Debi Truelove • debi.truelove@dhgllp.com • 404-245-0834
• 225 Peachtree Street, Suite 600 • Atlanta GA 30303

With more than 1,700 people in 30 offices, Dixon, Hughes, Goodman LLP is the largest certified public accounting firm based in the southern U.S. and the 13th largest in the nation. Having served the almond industry for more than 16 years, we understand the complexities faced by the industry and utilize a consultative approach to identifying tax-savings opportunities, while increasing efficiencies. In meeting the needs of our clients, we combine the delivery of comprehensive assurance, tax and consulting services with a strong commitment to personal service. For more information, contact Larry Evans at larry.evans@dhgllp.com or visit our Web site at www.dhgllp.com.

DONALDSON COMPANY • BOOTH 416

Scott Thomas • scott.thomas@donaldson.com • 714-366-8974
• 28852 Alta Laguna Boulevard • Laguna Beach CA 92651

Donaldson Company, via the acquisition and partnership with LMC West, is the premier supplier of baghouses and air filtration equipment for the nut industry. We proudly feature all the prior LMC West products (LP Baghouses, Cyclones, Aspirators, Duct, etc.), and we have also adapted the latest Donaldson filtration technology into new products that will have major benefits for the almond industry. Our DuraLife filter bags have a twice-the-life guarantee. Our new Powercore dust collectors have revolutionized a point-of-use approach that offers unparalleled filter efficiency and energy savings.

DOW AGROSCIENCES • BOOTHS 313, 315

Fred Rehman • fred_elysianfields@yahoo.com • 530-668-6665
• 1059 Court Street, Suite 104 • Woodland CA 95695

Pindar GT herbicide (long-lasting weed control, including fleabane and marehail), Intrepid insecticide (ovicidal/larvicidal activity for NOW, PTB), Delegate insecticide (1-day PHI for PTB, NOW), Lorsban Advanced insecticide (NOW, PTB, ants), Telone soil fumigant (nematodes, replant disease), Goal 2XL and GoalTender herbicides (pre-/post-emergent broadleaves), Trellis herbicide (excellent crop safety, 92 weeds).

DUARTE NURSERY • BOOTH 919 • SPONSOR

Sara Eidman • sara@duartenursery.com • 209-531-0351 • 1555 Baldwin Road
• Hughson CA 95326

Duarte Nursery is the industry leader, innovator and the only almond tree nursery that is 100% committed to containerized tree production. Duarte Nursery is the largest tree and vine nursery in California and offers you unmatched flexibility and performance.

DUPONT CROP PROTECTION • BOOTH 418

Christine Nevosh • christine.m.nevosh@dupont.com • 559-994-2864
• 550 W. Alluvial, #108 • Fresno CA 93711

Count on DuPont to ensure your best chance for success. The versatile DuPont portfolio features breakthrough products that fit your specific challenges and cultural practices, including short REIs and PHIs. Almond growers can count on DuPont products and services to effectively control insect, weed and disease issues.

DURATECH INDUSTRIES • BOOTH 317

Heather Strahm • heather.strahm@duratechindustries.net • 701-252-4601
• 3780 Highway 28158 • Jamestown ND 58401

DuraTech Industries manufactures a full range of industrial tub and horizontal wood waste grinders, along with a 12" wood chipper. DuraTech offers a wide variety of grinders with many options to suit the growing needs of wood waste recyclers. DuraTech offers grinders with CAT diesel engines in a wide horsepower range of 325 to 1050, as well as electric grinders. Our 12" wood chipper is available with the option of a Kubota or CAT diesel engine.

DURHAM PUMP, INC. • BOOTH 217

John Rhein • jrhein@dpump.com • 530-521-3940 • P.O. Box 60
• Durham CA 95938

Durham Pump is an agricultural irrigation contracting company in the Northern Sacramento Valley. It was established in 1952 by Joe Richter, a pioneer in developing the use of sprinklers for frost protection. Today, Durham Pump, Inc. is owned by a group of local ranchers and businessmen and has a strong reputation as a leader in providing the local agricultural community with highly-innovative and water-efficient irrigation systems through its state-of-the-art designs and installation services.

Durham Pump provides contracting and engineering designs for systems such as drip, micro and solid set irrigation.

DYNAMIC COATING, INC. • BOOTH 1010

David Remmer • david@dciflooring.com • 559-225-4605 • 5629 East Westover Avenue, Suite A • Fresno CA 93727

Dynamic Coatings, Inc. is a full-service floor and wall coatings, concrete restoration contractor for the fruit and nut industries. Some of the products include urethanes, MMA, epoxies, sealants, underlayments, moisture mitigation, water proofing, polished/stained concrete and more. Some of our features are USDA/FDA compliant, chemical resistant, antimicrobial, rapid-curing (1 hour), non-skid, and water-resistant. Services include surface preparation, joint and crack repair, drain installation, wall caulking, cove base, sloping, moisture control, under-layments and safety lines. With more than 27 years of experience and a complete line of product and surface preparation equipment, we are ready for your next project.

ELK GROVE DODGE • BOOTH 224, 226, 228, 230 AND 1227, 1229, 1231, 1233

Melanie Enos • melanie@fasonedirect.com • 916-405-2600
• 8575 Laguna Grove Drive • Elk Grove CA 95757

Elk Grove Ram (formerly Lasher Ram of Sacramento) is your premier Sacramento Ram Dealer. We offer Ram Service, Parts and Accessories, friendly and well trained staff who use the latest in automotive dealer technology to help serve you faster. Our beautiful new state of the art Ram facility provides a pleasant environment for purchasing or leasing your new Ram, and our Ram Service waiting room provides a quiet environment for you to work either from our wireless network on your laptop, or use a complimentary dealer provided PC while you wait.

ERICK NIELSEN ENTERPRISES • BOOTH 511

Hilary Porter • hporter@eneinc.com • 530-865-9409 • 4453 County Road
• Orland CA 95963

Erick Nielsen Enterprises, Inc. (ENE) has provided custom orchard services to California growers since 1972. In addition to our prune and pistachio harvesting, we offer mechanical pruning services such as topping, hedging, cross-hedging, skirting and slot pruning in a variety of tree crops. ENE is proud to offer innovative services with versatile and efficient equipment.

EURODRIP USA • BOOTH 1008

Tracy Lifer • tlifer@eurodripusa.com • 559-673-9100 • 1850 West Almond
• Madera CA 93637

Eurodrip USA is a leading manufacturer of seamless drip tape, drip line and polyethylene tubing. Established more than 10 years ago, we offer a complete line of micro irrigation products and services in the U.S. and Mexico, with more than five billion feet of high-quality, reliable drip tape and tubing. Eurodrip USA is a member of the Eurodrip Group, a renowned global supplier of drip irrigation products for over 27 years with a presence in more than 50 countries around the world. For more information, please visit www.eurodripusa.com.

EXACT HARVESTING • BOOTH 501

Doug Flora • heath@exactcorp.com • 209-613-1983 • 5143 Blue Gum Avenue
• Modesto CA 95358

Low-dust, reduced-pass almond-harvesting equipment.

FARM CREDIT ALLIANCE • BOOTH 821 • SPONSOR

Audrey Lopes-Dermond • aalopes-dermond@agloan.com • 209-667-5101
• 3201 W. Monte Vista • Turlock CA 95380

American AgCredit, Farm Credit West and CoBank are cooperatively owned lending institutions providing agriculture and rural America with a dependable source of credit. We specialize in financing farmers, ranchers, farmer-owned cooperatives, rural utilities and agribusiness. We offer a wide range of loan products and financial services, including long-term real estate loans, operating lines of credit, equipment and facility loans, cash management and appraisal and leasing services—everything a growing business needs.

ATCO
August Töpfer & Co.
(GmbH & Co.) KG

Your Reliable European Import Partner since 1912!

Please contact us: August Töpfer & Co. (GmbH & Co.) KG
P.O. Box 101809 • 20012 Hamburg • Germany
Phone: +49 (0) 40 / 32 003 - 256
E-Mail: almonds@atco.de
www.atco.de

FBSCIENCES, INC. • BOOTH 1214

Glenn Powell • cpeck@fbosciences.com • 901-221-1200
• 153 North Main, Suite 100 • Collierville TN 38017

An emerging global leader in plant health innovation, FBSciences is a life science company focused on growth-enhancement technologies and fertilizers for agricultural crops. FBSciences is dedicated to helping growers increase their crop yields and quality. Our products offer a safe, practical and sustainable solution for achieving greater crop yields and better plant health through better nutrient efficiency. Our products have been proven to successfully increase crop yields a variety of crops.

FISCHBEIN COMPANY • BOOTH 437

Forrest Williamson • fwilliamson@fischbein.com • 704-402-8380
• 151 Walker Road • Statesville NC 28625

For more than 100 years, Fischbein has designed, manufactured and supported high-quality bag packaging equipment worldwide. Through our family of brands—Fischbein, Saxon and Inglett—we provide a full range of bag, box and pail filling, weighing, handling and bag-closing equipment, which are widely used in the agriculture, animal feed, seed, NUTS, pet food and chemical industries to name a few. Our packaging specialists work closely with our customers to develop the right bag-packaging solution to meet their requirements and are committed to delivering the highest quality, reliability and service; because we understand that your success is dependent on the performance of our products.

FLORY INDUSTRIES • BOOTH 630 • SPONSOR

Stuart Layman • slyman@floryindustries.com • 209-545-1167 • P.O. Box 908
• Salida CA 95368

Manufacturers of nut harvesting equipment, shredders, dusters, flail mowers, as well as custom fabrication. Serving the agriculture industry since 1936.

FLY AWAY PEST CONTROL, INC. • BOOTH 318

Mary Hop • info@flyawaypestcontrol.com • 559-688-5661
• 10994 Avenue 272 • Visalia CA 93277

Fly Away Pest Control, Inc. is your local California distributor for Bird Gard and Deer Shield digital electronic repellents. Bird Gard uses a bird's primal fears and natural survival instincts to repel them. Digital recordings of species-specific distress and alarm calls, along with the sounds of their natural predators are broadcast through high fidelity weather-resistant speakers to convince birds they are under attack. A microprocessor and sophisticated random technology keeps birds from getting used to the sounds. Deer Shield works in a similar way to repel deer from orchards and farms.

FMC CORPORATION • BOOTH 1009 • SPONSOR

Robert West • robert.west@fmc.com • 559-221-4955
• 516 West Shaw Avenue, #200 • Fresno CA 93704

FMC Corporation is a diversified chemical company serving agricultural, industrial and consumer markets globally for more than a century with innovative solutions, applications and quality products. The company employs approximately 5,000 people throughout the world and operates its businesses in three segments: agricultural products, specialty chemicals and industrial chemicals.

FOOD SAFETY NET SERVICES • BOOTH 610

Jeff Carpenter • info@fsns.com • 888-525-9788 • 6281 Chalet Drive
• Commerce CA 90040

FSNS is a network of ISO 17025 laboratories accredited through A2LA. FSNS laboratories are open 24/7, 365 days and operate eight locations nationwide. FSNS provides a one-stop, VASP-approved resource for microbiological analysis, chemical testing, nutritional analysis, residues and allergen testing. FSNS offers a comprehensive array of auditing services; GFSI recognized BRC audits & Animal Welfare PAACO Certifications. Educational workshops include HACCP, BRC, Environmental Monitoring Program Workshop and custom onsite courses.

FOWLER NURSERIES • BOOTH 703

Chuck Fleck • chuck@fowlernurseries.com • 916-645-819 • 525 Fowler Road
• Newcastle CA 95658

Celebrating 100 years of excellence, Fowler Nurseries, Inc. produces quality almond trees, offering standard varieties and rootstocks. Fowler also features innovative and highly productive rootstocks, including Krymsk® 86, Rootpac®-R and Empyrean® 1. In order to best match the rootstock to the growing environment, Fowler continues to test promising rootstocks for almonds in many California locations. We are also the sole provider of "Durango" almond, a nonpareil pollinizer covering the early bloom. A key player in shaping the modern almond orchard, Fowler Nurseries proudly features high-quality trees at a fair price.

FRESNO MADERA FARM CREDIT • BOOTH 1127

Danielle Antonino • danielle.antonino@fmfarmcredit.com • 559-276-4815
• 4635 West Spruce • Fresno CA 93794

Fresno Madera Farm Credit, ACA is a member-owned cooperative that provides credit and credit-related services to or for the benefit of eligible borrowers/shareholders for qualified agricultural purposes in Fresno and Madera Counties in California. The mission of Fresno Madera Farm Credit is to become the premier agricultural lender in our market area, financing all eligible borrowers of every size and type in a constructive, consistent, reliable and competitive manner. Located in the world's top agricultural producing region, FMFC focuses on diversity, with the nut industry representing 25% of our portfolio.

FRUIT GROWERS LABORATORY, INC • BOOTH 305

Denis Barry • denisb@fglinc.com • 805-392-2032 • 853 Corporation Street
• Santa Paula CA 93060

Fruit Growers Laboratory, Inc. (FGL) provides laboratory analysis of soils, leaf tissue and irrigation waters. Analysis data is supported by a formidable Quality Assurance program. FGL also provides amendment guidelines to assist growers and their advisors with their fertilization programs. Analysis data, including historical data, can be archived, and effective statistical tables can be generated to display success of fertilization programs.

G&F AGRI SERVICES • BOOTH 1122

Randy Fondse • fondse01@aol.com • 209-599-8911 • P.O. Box 896
• Ripon CA 95366

G&F Agricultural Services was founded in 1991 by the company's president, Randy Fondse, and has been doing orchard removal and vineyard removal, along with custom grinding, throughout California and Nevada for over 20 years. G&F Agri Services is committed to doing more for the customer than the competition.

GARTON TRACTOR, INC. • BOOTH 1203

Mike Converse • mconverse@garton-tractor.com • 209-538-0911
• 5933 McHenry Avenue • Modesto CA 95356

Family owned and operated since 1954, Garton Tractor, Inc. supplies excellent orchard equipment, plus the service you deserve. Our orchard New Holland, Kubota tractors offer superior, proven designs with the features you'll appreciate. Count on best-in-class orchard implements, along with wheel loaders, tractor-loader backhoes, excavators and skid steer loaders. For utility vehicles, we are your supplier with industry-leading Kubota RTV, Kawasaki Mules and New Holland Rustler utility vehicles. Quality people, quality products, that's Garton Tractor, with seven locations to serve you! Come visit our booth for a chance to win a highly collectible Boomer 8N Pedal Tractor!

GOWAN COMPANY • BOOTH 806

Eric Casterline • ecasterline@gowanco.com • 661-342-5435 • 6806 Memory Court
• Bakersfield CA 93312

Our foundation was formed by walking the rows and orchards in lockstep with our customers. Gowan's success is attributed to our focus on niche products and minor crops, accompanied by technical know-how and customer responsiveness. Gowan Company differs from other chemical companies because we started in the field, walking with and listening to our customers. We manage our business for the long run. We are known in the ag chem industry as a political advocate for pesticides.

GOWAN USA, LLC • BOOTH 1107

Sherri Nash • snash@gowanco.com • 913-871-1731
• 13200 Metcalf Avenue, Suite 125 • Overland Park KS 66213

Our foundation was formed by walking the rows and orchards in lockstep with our customers. Gowan's success is attributed to our focus on niche products and minor crops, accompanied by technical know-how and customer responsiveness. Gowan Company differs from other chemical companies, because we started in the field, walking with and listening to our customers. We manage our business for the long run. We are known in the ag chem industry as a political advocate for pesticides.

GRASSWORKS WEED WIPER • BOOTH 1216 • SPONSOR

Linda Reed • lindareed@prodigy.net • 417-848-0566 • 8703 East Farm Road 80
• Stafford MO 65757

GrassWorks Weed Wiper is the ultimate weed control system that eliminates the drift and drip of chemicals onto your crops. This roll-on paintbrush application applies chemical to the weakest portion of the weed with no harm to desirable crops at a very economical cost. Units range from 3' to 50', with different models for any farming operation. Come by our booth and we will show you farmer and university results. The GrassWorks Weed Wiper successfully kills chemical resistant Pigweed, Smut grass, Thistles, Johnsgrass, Dog Fennel or any noxious weed with no harm to desirable legumes or crops. www.weedproblems.com, 888-80-WIPER

GREENLEAF AG • BOOTH 917

Maxine Balling • mballing@greenleafag.com • 559-904-1319 • P.O. Box 343
• Colinga CA 93210

Located in California's abundant Central Valley, GreenLeaf Ag provides innovative product solutions for irrigation system maintenance. With over 50 years of collective experience, we provide growers with proven results.

GREEN TREE NURSERY • BOOTH 212

Karlene Hanf • karlenehanf@greentreenursery.com • 209-874-9100
• 23979 Lake Road • LaGrange CA 95329

Providing quality almond trees to California for more than 45 years! Green Tree Nursery offers a full line of deciduous nut and fruit trees, including almonds and walnuts and pecans through Linwood Nursery. Place your almond order now and check out our early order discounts! Contact Karlene Hanf at karlenehanf@greentreenursery.com.

GRIMBLEBY-COLEMAN • BOOTH 213

Kadie Helton • khelton@gccpas.net • 209-527-4220 • 200 W. Roseburg Avenue
• Modesto CA 95350

Grimbleby Coleman CPAs is an accounting and business advisory firm with headquarters in Modesto, California, and a second office in Oakdale, California. Since 1973, we have been trusted by the families and businesses of the Central San Joaquin Valley to tackle every challenge with deep skill, insight and experience. You can count on the people at Grimbleby Coleman to go beyond the numbers and actively support your personal and business success. We know that you, too, have people counting on you. Our mission is to always stay focused on the people behind the numbers.

H.G. MAKELIM CO • BOOTH 837

Roy Richter • rrichter@hgmakelim.com • 650-827-7551
• 1295 N. Emerald Avenue, Suite S • Modesto CA 95351

Distributor for Kubota and Kohler engines, Kipor generators, Kubota generators, engine accessories and parts. Complete engine power units up to 100hp.

HAMILTON ENERGY SOLUTIONS • BOOTH 938

Chad Dickason • kshipman@hamiltonsolarusa.com • 775-747-6000
• 748 South Meadows Parkway, Suite A-9 • Reno NV 89521

Hamilton Energy Solutions is a leading solar contractor in the western U.S. From our Fresno office, we are developing and delivering high-value and low-cost energy alternatives. Our unique approach combines the highest-quality materials with tailored payment options, reducing agricultural power costs by 25% or more. Hamilton has installed over 10 MW, employs about 60 full-time staff and is headquartered in Reno, Nevada, with offices in Las Vegas and Fresno, California.

HARMON SYSTEMS INTERNATIONAL, LLC • BOOTH 504

Terry R. Gong • westernso2@aol.com • 925-250-4559 • 2201 Coy Avenue
• Bakersfield CA 93307

Harmon SO2-Sulfurous Acid Generators have been used for nearly 60 years and is considered by many to be the most cost-effective way to control the pH of water and soil. This equipment manufactures acidity directly from the irrigation water itself, so it can be carried and delivered into the soil. When amending water to pH 6.5, this method actually provides twice the acidity of sulfuric acid half the material cost, while being safe to touch. It also keeps drip lines and emitters clean and free from being plugged with mineral scaling and bacterial slime. pH control improves water penetration; salt leaching; nutrient availability; crop quality, yield, rate of maturity, etc. Approved for organic crops.

HELENA CHEMICAL • BOOTHS 807, 809

Dave Cheetham • cheetham@helenachemical.com • 530-570-4070
• 3155 Southgate Lane • Chico CA 95928

Helena Chemical Company is a national distributor of crop-production inputs and services, including crop protection chemicals, seed, fertilizer and related services. The company was formed in 1957 and is headquartered in Collierville, Tennessee, near Memphis. In major agricultural regions across the country, Helena services customers from approximately 350 sales locations. Outside of agriculture, Helena's Specialty Division serves golf course, forestry, industrial, turf and ornamental markets. Helena's stated goal is to be the preferred link between suppliers and customers to those who grow food and fiber and manage vegetation.

HELIO POWER • BOOTH 1013

Bill Seals • bseals@heliopower.com • 415-434-3546
• 100 Montgomery Street, Suite 1055 • San Francisco CA 94104

HelioPower is an integrated engineering services company. We reduce the energy cost of producing, transporting and storing agricultural and food products. HelioPower serves growers and processors by developing, financing and implementing tailored energy solutions, including biomass, solar photovoltaic, solar thermal, cogeneration, fuel cells, lighting, energy analytics metering and monitoring, policy and business process consulting as well as managing the price you pay for utility-provided energy. We create high-return projects and structure financing to deliver immediate and sustainable positive cash flow.

HOLZ RUBBER • BOOTH 614

Robert Wheeler • robertw@holzrubber.com • 209-210-7610
• 1129 S. Sacramento Street • Lodi CA 95240

With more than 40 years experience, Holz Rubber Company is a recognized leader in the almond industry. We offer two different shear roll compounds, shear roll belts, shaker balls and our highly engineered round and oval shaker pads. With an onsite lab and testing facility, Holz Rubber is equipped with the tools and experience to continue bringing new and integrated solutions to the almond industry. Holz Rubber provides exceptional elastomeric products for your success!

HORTAU, INC. • BOOTH 328

Jeremy Otto • jotto@hortau.com • 805-748-5505 • 1075 Court Street, Suite 211
• San Luis Obispo CA 93401

Hortau specializes in wireless and web-based irrigation management. Hortau integrates proprietary soil sensing innovations with the latest information technologies to deliver the most advanced irrigation management solutions on the market. Hortau was founded in 2002, by Dr. Jean Caron, agronomist, Ph.D. in soil physics and Jocelyn Boudreau, agricultural engineer, M.Sc. in soil physics. Our expertise is in agronomy, soil physics and agricultural engineering. Improving crop production is our focus. We use the latest technologies to simplify irrigation decisions. This enables growers to maximize their crops and efficiently use water, energy, fertilizer and pesticides. Today's mobile internet platforms, such as the iPhone and Blackberry, allow for remote real-time system feedback and activation. Whether used for frost alarms or activating a complete irrigation system, Hortau uses the latest technologies to optimize crop production.

HOTSY PACIFIC • BOOTH 1209

Jim O'Connell • hotsypac@aol.com • 209-578-3925 • 1300 N 9th Street, Suite B
• Modesto CA 95350

Hotsy Pacific is a premier supplier of cleaning solutions for the Central Valley and the Bay Area. We supply equipment for dry-ice blasting, pressure washing, wet-sand blasting, parts washing, detergents for sanitizing, cleaning and degreasing. We also have a full line of parts and accessories in stock. We offer rentals, lease programs and easy payment plans, as well as service and repairs on all types of cleaning equipment. We are centrally located in Modesto and have been under the same ownership for over 20 years. Please visit our Web site for more information: www.hotsypacific.net.

HUGHSON NUT, INC. • BOOTH 1014

Raquel Andrade • raquel@hughsonnut.com • 209-394-6005 • P.O. Box 1150
• Hughson CA 95326

Hughson Nut, Inc. was established in 1985 with the purpose to create, sustain and manage customer-centered strategies and processes that would cultivate long-term relationships with growers and buyers. We take great pride in providing quality products, as well as pasteurization services with premium customer service. Our PPO chambers are designed to hold up to 24 standard wooden bins, fiber bins or palletized cartons. Our qualified staff provides high-tech security and complete documentation for all work performed. We are licensed by the State of California and follow the strictest guidelines in operating our facility.

IEH LABORATORIES AND CONSULTING GROUP • BOOTH 906

Merle Jacobs • merle.jacobs@iehinc.com • 209-765-4389 • 217 Primo Way
• Modesto CA 95358

IEH-JL Analytical Services, Inc. is one of a network of full-service testing laboratories offering all-encompassing analytical services and consulting for microbiology, chemistry, pasteurization process validation, export requirements, pesticides, pathogen detection, nutritional labeling, SRM testing, vitamins and allergens. We are accredited to ISO/IEC 17025, the international standard for laboratory competence. Our staff will provide you with the most accurate and precise analytical data necessary to stay ahead in today's business environment.

INTEGRATED STRUCTURES, INC. • BOOTH 1234

Cullen Burda • shared@integratedstructures.com • 510-665-9633
• 1250 Addison Street, Suite 214 • Berkeley CA 94702

Buildings consume half of the nation's energy and are the largest contributors to climate change. The Energy Mass Wall [EM WALL] from Integrated Structures saves energy, reduces operating costs and protects the buildings contents in the event of a power failure or natural disaster. Return on investment in most cases under three years. The cutting edge in energy-cost-saving solutions for almond storage in new facilities and retrofits of existing.

INTERNATIONAL DISTRIBUTION PARTNERS NV • BOOTH 1102

Luc Adriaensen • adriaensen.l@idpartners.be • +32 3 640 36 36
• Zuidkaai 5 Merksem • Belgium 2170

Established at the end of the last century, I.D.P. is a major player in forwarding containerized nuts and dried and fresh fruit. I.D.P. offers a full range of logistics services for importing your food products. I.D.P. has 42,000 square feet ambient storage and 14 independent cold stores, with temperatures from -0.5°C to 24°C, and has invested at its new facility to reduce the storage carbon footprint. Your nuts and dried fruit can also be exported with our services. We offer pre-shipment consolidation, and I.D.P. handles all export paperwork and inspections. I.D.P., your tailor-made forwarder, to move your products in Europe and overseas.

INTERNATIONAL WOOD INDUSTRIES • BOOTH 404

Jeff Warn • jeff@intlwoodind.com • 209-632-3300 • 250 D Street
• Turlock CA 95380

IWI specializes in serving the California agricultural community. If you need bins, we can build them for you. If you need to repair bins, we are the best source for all your parts, plywood bottoms and sides, and all-metal parts, nuts and bolts included. IWI will provide you with the best quality, the best service and the very best pricing available.

IRRIGATION SOLUTIONS, INC. • BOOTH 912

Kate McIntyre • kate@irrigationsolution.net • 916-847-3597
• 1350 West Main Street • Turlock CA 95381

Maximize yields through greater water and nutrient availability. The Ag Solution Master gyp machine allows the grower to supply gypsum, fertilizers and other soluble products directly through the existing irrigation system. This allows for improved soil structure, corrects chemical imbalances, increases nutrient uptake and benefits plant health and kernel size. Thousands have been sold, and we continue to hand-build each machine at our plant in Turlock. With a variety of tank sizes and a gas or electric motor, these machines can be purchased trailer-mounted for portability or permanently fixed and automatically supplied through a silo and auger system.

JACKRABBIT • BOOTH 601

Tim Harms • tim@jackrabbitt.bz • 559-288-6935 • 471 Industrial Avenue
• Ripon CA 95366

JackRabbit nut-handling equipment runs ahead of the herd with cutting-edge design and technology with the fastest, most efficient nut production for today's growers worldwide. An industry leader since 1982, JackRabbit designs and manufactures automated harvest systems, stock piling elevators and Prune-Rite pruning towers. Feel the need for speed when it matters most. JackRabbit: from the future for today's grower. Nut-handling equipment includes the JackRunner self-propelled shuttle, the new Wedge 10 Reservoir Cart, the new 30/36 Elevator with Woodchuck desticker, YardJack duel 36 stock piling elevator with Woodchuck desticker option, Jack Cart K70 and the new PrepperJack conditioner and Stick Jack pre-harvester desticker.

JAIN IRRIGATION, INC. • BOOTH 1021

Nathaniel Bliss • nbliss@jainsusa.com • 559-959-5333 • 2851 E. Florence
• Fresno CA 93721

Jain Irrigation is a world-leading manufacturer in microirrigation. Each orchard must have a unique irrigation system that meets several environmental factors. Jain Irrigation is your solution for meeting all your orchard needs, supplying steel filters, fittings, PC emitterline and injectors. Let us make the best of every drop for your crop.

JENJIL PACKAGING, INC. • BOOTH 1135

Nick Hackler • nickhackler@jenjilpackaging.com • 209-656-9160
• 2242 Maryann Drive • Turlock CA 95380

JenJil Packaging supplies local growers, packers and processors with corrugated boxes and other various types of supplies. JenJil works with several of the top manufacturers in the country and has a great design team specializing in designing and creating customized boxes and providing you with excellent service. Please stop by to see how you can make JenJil your packaging resource!

JKB ENERGY • BOOTH 818 • GREEN SPONSOR

Bob Hanson • bob@jkbenergy.com • 209-668-5303 • 941 E. Monte Vista Avenue
• Turlock CA 95382

In recent years, JKB Energy has established itself as the leader in agricultural solar installations. As the official Green Sponsor for Almond Board of California, Almond Hullers & Processors Association and California Citrus Mutual, JKB Energy has the knowledge and skill needed to install high-performance solar systems in any agricultural environment.

KAMPER FABRICATION • BOOTH 1037

Greg Kamper • greg@kamperfab.com • 209-599-7137
• 20107 N. Ripon Road, P.O. Box 177 • Ripon CA 95366

Kamper Fabrication, Inc. builds complete almond processing facilities and manufactures equipment lines for almond hulling/shelling, cleaning, sizing, sorting and packaging. Our complete, turnkey almond processing facilities are reliable and easy to operate. Kamper Fabrication, Inc. processing facilities and machinery are unmatched in durability, efficiency and longevity and withstand the rigors of high-volume processing through decades of harvests. Our excellent reputation worldwide comes from our commitment to customer satisfaction and consistently high-quality products. Stop by our booth to see photos of our installations and videos of our equipment in operation.

KEY DOLLAR CAB, LLC • BOOTHS 225, 227

Jason Dohrmann • jason@keydollarcab.com • 503-254-3467 • P.O. Box 16963
• Portland OR 97292

Key Dollar Cab, LLC is an original equipment manufacturer of orchard cabs for specialty agriculture. Product lines range from universal fit to factory cab alternatives. Each cab design is aimed at maximizing operator protection and comfort, while minimizing crop damage. The company was founded in 1982 and is located in Portland, Oregon. For more information, please visit www.keydollarcab.com.

KINGSBURG CULTIVATOR – PACIFIC WESTERN • BOOTH 337

Clint Erling • clint@kci-mfg.com • 559-897-3662 • 40190 Road 36
• Kingsburg CA 93631

For 40 years, Kingsburg Cultivator, Inc. and KCI-Scheidt nut-harvesting equipment has provided our customers with the most efficient designs possible. From shuttle carts and conveyors to bankouts, our proven shuttle express tractor can be used for your spray rig, spreader or other uses on your ranch. Call us for more information from large to small growers. www.kci-mfg.com.

KLIPPENSTEIN CORPORATION • BOOTH 1133

Ryan Stewart • ryan@klippenstein.com • 559-647-5117 • 5399 S. Villa Avenue
• Fresno CA 93725

Klippenstein Corporation has been manufacturing custom packaging for the food and almond industry over the past 30 years. We have flexible layouts that integrate almond box formers/erectors, load stations that communicate with your scale, case sealers and box stackers/palletizers. Your packaging needs are our first priority. As your production expands, we can help your operation meet those needs with a fully automated or semi-automated packaging system.

LIONUDAKIS • BOOTH 1236

Scott Sand • sand@lionudakis.com • 209-581-4660 • 20451 McHenry Avenue
• Escalon CA 95320

We have been the Central Valley's premier provider of orchard removal services for more than 30 years. A locally owned family company with more than three generations of experience in the agricultural services industry (dating back to 1923), we've built Lionudakis Wood & Greenwaste into the largest orchard removal company in the Central Valley of California. We're committed to utilizing the highest-quality equipment and operators to provide the cleanest and most effective service to local farmers. Let us take care of your orchard removal needs.

WAR ON WEEDS

Go to battle with the ROTATING WEED WIPER that WORKS!

WIN the battle against Pigweed, Johnsgrass, Smut grass and any other noxious weeds.

GrassWorks Weed Wiper™

Tractor Mount Units, 6' Up To 50'
Tow Behind Units Up To 13'

KILLS WEEDS... Save legumes. NO DRIP... NO DRIFT.

RESULTS Tell The Story...

Successfully Wiped Chemical Resistant Pigweed

GrassWorks Weed Wiper, LLC
(888) 80-WIPER or (479) 790-1091
sales@weedproblems.com • www.weedproblems.com
Mfg. In U.S.A.

LODI IRRIGATION • BOOTH 914

Jesse Lopez • jesse@lodiirrigation.com • 530-330-6330 • 2920 Highway 99-West • Corning CA 96021

For almost 30 years, Lodi Irrigation has been serving its customers with quality and service that remains unmatched. Our goal is higher grower profitability with superior workmanship and efficient systems. We provide full systems from design to install, a pump division, quickresponse service teams and retail stores. We have established ourselves as the trusted company for all your irrigation needs with two full-service locations. No project is too big or too small. We can deliver your water where and when you need it. Put your water in our hands for guaranteed results.

LOG5/KOCO • BOOTH 1136

Jochem Dekker • jdekker@log5.com • 240-544-2050 • 4 Glenberry Court • Phoenix AZ 21131

Continued research by a team of Log5 experts has resulted in superior nut pasteurization technology. The approach (patent pending), called Water Activity Controlled Pasteurization (WACP), allows for precise control over the water vapor absorption and thus provides excellent inactivation and product quality properties. Key to the new design is a modular layout, which allows a continuous process flow, shorter dwell times at precisely controlled temperatures and improved product handling. WACP technology is affordable, easy to implement and available in capacities ranging from 500 to 44,000 pounds an hour. The system's small footprint fits within standard building heights.

M. PARISE ASSOCIATES • BOOTH 537 • SPONSOR

Mike Parise • peggy@mparise.com • 831-648-9234 • P.O. Box 52119 • Pacific Grove CA 93950

M. Parise Associates represents world-class manufacturers who support the nut industry throughout the West Coast and Hawaii. BEST, the world leader in sorting technology, will introduce the Nimbus-N sorter, which will lead the revolution in the nut-sorting industry! BEST will be holding the GRAND OPENING of the new demo center in Sacramento on Wednesday, December 12. We invite you to visit and see demonstrations of the newest technologies that are sure to change the face of nut sorting worldwide! Please check your conference bag or visit us at our booth for more information. MPA also represents Meyer Industries, a world leader in material handling. Meyer is working closely with many leading nut processors to help revolutionize the industry with their sanitary material handling, vibratory conveyors, bucket elevators and sealed bin dumpers. With considerations for your company's time, quality and budget, MPA provides the best possible solutions to help your company take control of quality and food safety while increasing profitability.

MAC PROCESS • BOOTHS 707, 709

Doug Kunik • maceys@macprocessinc.com • 816-891-9300 • 7901 NW 107th Terrace • Kansas City MO 64153

Mac Process designs, engineers, manufactures and supplies a complete line of pneumatic convey-and-dust-collection equipment to the almond industry. Solutions include gentle handling of friable processed foods; high-tech, low-cost systems that are easy to maintain; economical, sanitary mechanical conveyors; energy-efficient dust-collection systems. Mac Process is represented by Baghouse Industrial, a turnkey, full-service provider of air pollution control, dust collection and bulk material handling systems with additional expertise in sheet metal, steel fabrication installs, mechanical contracting and handling critical schedule shutdowns. Visit us at macprocessinc.com or 1-888-BAGHOUSE.com.

MACRO PLASTICS & TRANPAK INC. • BOOTH 801

Marty Ueland • marty@tranpak.com • 800-827-2474 • 4603 N. Brawley Avenue, Suite 104 • Fresno CA 93722

TranPak is a leading national distributor of plastic material handling products. Our plastic pallets, plastic bins and plastic cases are designed to streamline operations and satisfy regulations while reducing costs over traditional packaging.

MAGNATION WATER SYSTEMS • BOOTH 1108

Mike Jenzeh • kyla@moreplant.com • 510-879-7800 • 660 4th Street • Oakland CA 94607

Crop and food producers who aim to optimize water use to more efficiently achieve greater plant production, have a new and improved tool through Magnation Water Systems, manufacturer of H2O Energizer and Magnation Next Generation water systems. Magnation's products have resulted in a 10% or more increase in water efficiency, both in crop yields and industrial applications. The devices are commonly installed at the last point of entry in an irrigation source. The system can be easily tailored to fit any irrigation system or enhance any crop grown on today's farms. Magnation's passive, inline magnetic water systems improve pump efficiency and water flow by reducing total dissolved solids (TDS).

MANA, INC. • BOOTH 808

Ron Thomsen • rthomsen@manainc.com • 559-696-7171 • 2111 West Vartikian Avenue • Fresno CA 93711

MANA Crop Protection – Quality Products – Competitive Prices. MANA's proven insecticides, fungicide, herbicides, PGRs and harvest aids are manufactured to the highest standards and value priced to optimize a farm's profitability. MANA provides best-in-class formulations, regulatory capabilities, extensive field testing and research and a science-based approach to defend and maintain vital active ingredients. Our area business management teams throughout the U.S. support the distributors, retailers, crop consultants and agronomists who are part of the supply chain that today's producers and farm managers rely on for localized expertise.

MARRONE BIO INNOVATIONS • BOOTH 231

Ryan Hesse • rhesse@marronebio.com • 530-750-2800 • 2121 Second Street • Davis CA 95618

Marrone Bio Innovations (MBI) discovers, develops and markets effective and environmentally responsible products that fill unmet needs for plant disease, weed and invasive pest management. MBI currently markets REGALIA, the most effective natural product for controlling Brown Rot in almonds. University of California trials prove that almond trees treated with REGALIA had 79% less Brown Rot than untreated trees. New from MBI, GRANDEVO DF is a next-generation bioinsecticide, which offers almond growers a new dimension of pesticide activity. GRANDEVO DF delivers proven broad-spectrum control for Peach Twig Borer, Navel Orange Worm and Two-Spotted Spider Mite.

MICROBIOLOGY INTERNATIONAL • BOOTH 1114

Adam Violante • adam.violante@800ezmicro.com • 301-662-6835 • 5111 Pegasus Court, Suite H • Frederick MD 21704

Microbiology International is a provider of automated instrumentation for microbiology laboratories. The product portfolio includes the key equipment and test kits required for food sample preparation, primary enrichment, screening using Real-Time PCR and culture confirmation of any positives samples found during PCR screening. The Rapid LT Real-time PCR system is accurate, robust and fast, delivering results within 24 hours of sampling food or food ingredients.

MID STATE HULLER AND SHELLER/GOLDEN GATE NUT • BOOTH 1015

Terry Wells-Brown • terry@goldengatenuts.com • 209-747-0481 • 23073 S. Frederick Road • Ripon CA 95366

Mid-State is an organic-certified, conventional hulling and shelling facility located in the heart of the state in Ceres, California. We feature premium in-shell output and enjoy an in-shell packing line at our nearby processing facility, Golden Gate Nut Company. Golden Gate Nut Company, located in Ripon, California, is a full-service, custom nut processor featuring both a validated pasteurizer blancher and oil roaster. Golden Gate Nut Company services include slice, dice, split, blanch and oil roasting full-service laser, hand sorting and grading. Please call us today for an updated price sheet; we look forward to working with you.

MID-PACIFIC INDUSTRIES • BOOTH 232

Randy Sohn • randy.sohn@mid-pac.com • 530-661-6777 • 1500 Case Place • Woodland CA 95776

Mid-Pacific Industries, Inc. was established in 1970 and is the only dealer in the U.S. that dedicates 100% of its business to yard trucks. Known for our expertise and customer satisfaction, Mid-Pacific Industries will be there whenever assistance is needed. We have a fully stocked warehouse of parts, mobile service technicians, dependable rental department and knowledgeable sales staff. Over 100 new, used and rental yard trucks are available. Our entire fleet of trucks is C.A.R.B. compliant. For a complete list of sale and rental yard trucks, visit: www.mid-pac.com. At Mid-Pacific, YOUR yard truck is OUR business.

MODERN PROCESS EQUIPMENT, INC. • BOOTH 407

Lizzie Ephraim • lizzie@mpchicago.com • 773-242-2922 • 3125 S. Kolin Avenue • Chicago IL 60623

Founded in 1957 with worldwide headquarters in Chicago, Illinois, Modern Process Equipment Corporation is the undisputed leader in the design and manufacturing of size reduction and related processing equipment. MPE manufactures the Chain-Vey conveyor that is specifically designed for the transport of food and bulk powder products at distances of up to 200 feet with minimal product degradation. Other benefits include its flexible design (combines horizontal and vertical transport in one system), CIP (Clean-In-Place) capabilities and energy efficiency.

MOTION INDUSTRIES • BOOTH 505

Garrick Kelley • garrick.kelley@motion-ind.com • 209-830-8522 • 4165 Commercial Drive • Tracy CA 95304

Motion Industries is the world's largest distributor of bearings, mechanical, electrical and fluid power transmission and hose products. A wholly owned subsidiary of Genuine Parts Company, Motion Industries provides quality products and services through a network of over 500 branch operations and 10 major Distribution Centers. Motion Industries began its 66-year history on April 1, 1946, as a distributor of bearings and mechanical power transmission items. Today, that formula has resulted in growth to operating locations in the United States, Canada and Puerto Rico, with the most effective and efficient operating structure in all the industrial distribution market.

NABTA USA INTERNATIONAL, INC. • BOOTH 408

Debbie Chen • nabta@nabta.com • 916-813-8223 • 7550 Folsom Auburn Road, #1505 • Folsom CA 95630

Since 1999, NABTA has had two factories in China, producing fully water-soluble fertilizers with fully chelated micronutrients. We are globally responsible. Registered at CDFA, all NABTA products are of high and stable quality, beautifully packaged with on-time shipments and competitive prices. Packaged in 50 pound bags x 44 bags per pallet. Warehoused in Northern and Southern California for quick delivery. NO CLOGGING! LESS MONEY for MORE HARVEST!

NELSON IRRIGATION CORPORATION • BOOTH 316

Craig Stafford • craig.stafford@nelsonirrigation.com • 509-525-7660 • 848 Airport Road • Walla Walla WA 99362

Nelson Irrigation manufactures and sells proprietary agricultural water application equipment to save water, energy, labor and to do a better job of irrigating. Located in Walla Walla, Washington, we manufacture and sell Rotator products, including R5, R10 and R2000 sprinklers, which are widely used in almond, walnut and other tree crops. Nelson Irrigation also builds Rotator sprinklers for center pivot applications, Big Gun sprinklers for dust suppression and a family of control valves that are used throughout the world. Our New R5 Pop-Up Rotator sprinkler and wireless, automated gear are on display at The Almond Conference this week.

NELSON MANUFACTURING COMPANY, INC. • BOOTH 1031

Jim Bennett • jimb@nelsonhardie.com • 530-673-0919 • 2860 Colusa Highway • Yuba City CA 95993

Nelson Mfg. Co., Inc. manufactures high-performance Nelson Hardie orchard sprayers, the ROPS-approved Nelson Orchard Cab for low-profile orchard tractors and the smooth-action Nelson Tree Squirrel orchard pruning towers.

NETAFIM USA • BOOTH 508

Matt Langa • mlanga@netafimusa.com • 559-253-2548 • 5470 East Home Avenue • Fresno CA 93727

Netafim USA manufactures the widest selection and most advanced drip/microirrigation products for almond growers. Products include driplines, valves, filters, air vents and automation. We offer products and solutions to help you Grow More With Less. For more information, visit www.netafimusa.com.

NEW ERA FARM SERVICES, INC. • BOOTH 1226

Doug Graham • doug@newerafarmservice.com • 559-686-3833 • 2904 E. Oakdale • Tulare CA 93274

New Era Farm Service, Inc. is an agronomic service corporation specializing in organic-matter management for agricultural soils and crop nutritional support systems. Our recommendations are uniquely balanced between traditional N-P-K inputs and more advanced methods of fertilization, including sustainable farming practices. In today's marketplace, there is increasing emphasis on pesticide-safe, nutritionally sound food products. Mainstream agriculture is in transition to meet this emphasis, and NEFS has been instrumental in furthering these ideas and techniques for over 35 years.

NUFARM • BOOTH 802

Erika Canady • erika.canady@us.nufarm.com • 919-523-7764 • 4020 Aerial Parkway, #101 • Morrisville NC 27560

Nufarm is the eighth leading crop protection company worldwide. We have a strong U.S. presence to quickly respond to customer needs, including a dedicated sales team, a fully equipped laboratory in North Carolina and a formulation plant in Illinois. Nufarm offers a diverse product portfolio, including herbicides, insecticides, fungicides and plant growth regulators that can be used across agriculture crops, in turf and ornamentals and in specialty, non-crop uses. Nufarm's high-performance, high-value products protect almonds and maximize profits.

NUTRIENT TECHNOLOGIES • BOOTH 215

Kirk Anderson • ntkirk@comcast.net • 209-380-2942 • 2079 Woodbine Avenue • Manteca CA 95337

Nutrient Technologies is a manufacturer of foliar nutrients. We specialize in micro nutrients and have a wide range of formulations that are readily available. We sell our products under the Tech-Flo, Tech-Spray and Tech-Gro labels. Please contact your PCA for more information. You can also visit us at booth #215.

NUTSTAR SOFTWARE • BOOTH 1129

Gerrit Dorrepal • gerrit@nutstar.net • 209-596-0354 • 1897 Pinehurst Drive • Turlock CA 95382

NutStar Software is providing software solutions for the nut industry to assist in inventory, sales and grower purchases. Software is available for huller shellers and processors.

OMIC USA, INC. • BOOTH 414

John Lupean • jlupean@omicusa.com • 503-223-1497, Ext. 13 • 3344 NW Industrial Street • Portland OR 97210

OMIC USA, Inc. is an ISO 17025 accredited analytical laboratory that specializes in pesticide residue, heavy metals (including speciation of both organic and inorganic arsenic), mycotoxins, nutrition, allergens, GMO and microbiological testing. Industries covered include fresh and processed food and agricultural commodities. www.omicusa.com.

ORCHARD MACHINERY CORPORATION • BOOTH 737 • SPONSOR

Joseph Martinez • jm@shakemaker.com • 530-673-2822 • 2700 Colusa Highway • Yuba City CA 95993

Shock Wave by Orchard Machinery Corporation is the world's leader in manufacturing of almond-harvesting equipment. The Shock Wave shakers feature the patented F.A.S.T. (Fully Automated Shaking Technology) and Air Pas systems. The F.A.S.T. system guarantees: (1) uniform shaking, (2) minimum damage, and (3) 20% reduction in fuel consumption. The new OMC aftershock material handling line features a state-of-the-art ground drive system and air ride suspension. Wesco by OMC features the Almond Super Hopper trailer line.

ORCHARD-RITE – PACIFIC DISTRIBUTING • BOOTH 301

Hans Bollerad • hans@nutshaker.com • 209-883-4032 • 5724 E. Whitmore Avenue • Hughson CA 95326

Pacific Distributing, Inc. is the exclusive distributor of the Orchard-Rite tree shaker – not only the most imitated tree shaker on the market, but also the most sought after. This is due to our service and support of our product. We are also the world's largest distributor of Orchard-Rite wind machines for protecting more crops from frost damage than any other manufacturer. Word of mouth is still our best advertisement.

ORO AGRI • BOOTH 402

Larry Liggett • liliggett@oroagri.com • 661-304-6007 • 990 Trophy Club Drive • Trophy Club TX 76262

ORO AGRI develops, manufactures and distributes patented products for various agricultural and commercial applications. These products fall under the organic or environmentally friendly categories and are manufactured and distributed internationally. Depending on the registration per country, ORO AGRI pesticide products either have no or very short re-entry and pre-harvest intervals and are an advantage in meeting residue requirements for produce.

P2G – PROGRESSIVE GENETICS GROUP • BOOTH 826

Jack Poukish • jack@sgtrees.com • 530-674-1145 • 1555 Baldwin Road • Hughson CA 95326

P2G, Progressive Genetics Group, is an alliance of four California tree nurseries dedicated to the development and introduction of improved rootstocks for almonds and other orchard crops. Through the nurseries of P2G, rootstocks such as Krymsk® 86, Bright's Hybrid® 5 and Empyreen® 1 are delivering real solutions to increased almond yields and orchard health.

PACIFIC SOUTHWEST IRRIGATION CORPORATION • BOOTH 401

Jim Clare • jclare@pacsouthwestirr.com • 209-986-0099 • 8372 S. Jack Tone • Stockton CA 95215

Pacific Southwest Irrigation Corp. is a full-service irrigation dealer/contractor serving the Southern Sacramento and Northern San Joaquin Valleys. Irrigation and pump station design and installation are serviced by field men trained and qualified to provide economic, practical and efficient projects for long term. With both a pump division and a rental division, we fabricate many of the structures we design into our projects. Whether turnkey, parts only, repair and service, complex or simple problem solving, we have unique experience and are quick and professional. Licensed general engineering contractor and owner Jim Clare, outside field engineers and a large service staff are available Monday–Saturday, Sunday emergency.



To get this quality
you can copy & paste
or use the new...

BORRELL
SMART SORTER™[®]

our new gravity table
(and something else)

BORRELL **BORRELLUSA**

260-262 Riggs Ave
Merced, CA. 95341 USA
JBORRELL (888) 5267735
(209) 7263655
mail@borrell-usa.com
www.borrell-usa.com



PACKAGING INNOVATORS CORPORATION • BOOTH 811

Mark Mazzocco • mark@packaginginnovators.com • 925-371-2000, Ext. 216
• 6650 National Drive • Livermore CA 94550

Packaging Innovators Corporation (PIC) is a family-owned and locally run manufacturing company. We design and manufacture corrugated boxes for the food and wine industries in Livermore, California. PIC utilizes state-of-the-art equipment and has printing capabilities second to none within our industry anywhere in the world. We are also vertically integrated and manufacture our own paper with one of the most technically advanced corrugators. Our vertically integrated operation allows the highest quality paper, the flattest sheet and with turnaround times thought to be unimaginable. Please contact us to see the difference between us and the rest of our industry.

PATTYN NORTH AMERICA, LLC • BOOTH 235

Lars Nielsen • ruben.nielsen@pattyn.com • 262-727-7040 • W300N9083 County Road E • Hartland WI 53029

Pattyn Packing Lines is a family company, located in Bruges, with more than 30 years' extensive experience in polybag lining solutions. We help you achieve your business goals: automation of the complete packaging process, reduction of your consumables costs and an increase in your current packaging capacity. We integrate standalone machines or complete automated lines, from case erecting, bag-making and inserting, filling, to bag and case closing, along with developing full turnkey systems. Pattyn North America, LLC is the North American division of Pattyn Packing Lines with offices in Modesto, CA, and headquarters in Hartland, WI.

PBM SUPPLY & MFG., INC. • BOOTH 907

Steve Vance • svance@pbmsprayers.com • 530-345-1334 • 324 Meyers Street
• Chico CA 95928-7175

Not your average equipment manufacturer, PBM has decades of experience in creating custom spray equipment, tank trailers and other custom equipment built to order to suit individual customer needs. We pride ourselves on our craftsmanship. Where most manufacturers focus on mass production and profit, PBM focuses on delivering an excellent, lasting product tailored to customer needs at a reasonable price. Our sprayers and tank trailers are built with the best-quality components to make certain that downtime is minimal and that parts are readily available. We offer a multitude of options to meet the specific needs.

PG&E • BOOTH 1007

Dean Kunesh • dean.kunesh@pge.com • 415-238-9934 • 245 Market Street
• San Francisco CA 94105

Pacific Gas and Electric Company, incorporated in 1905, is one of the largest combination natural gas and electric utilities in the United States. There are approximately 20,000 employees who carry out PG&E's primary business—the transmission and delivery of energy. The company provides natural gas and electric service to approximately 15 million people throughout a 70,000-square-mile service area in Northern and Central California.

PHENIX EQUIPMENT, INC. • BOOTH 1205

Pat Macfarlane • patrickm@phenixinc.com • 209-368-2797 • P.O. Box 2427
• Lodi CA 95241

Phenix Equipment, Inc. is a manufacturer's representative specializing in bulk material handling and control equipment, including separation magnets, vibratory feeders, metal detectors, X-ray, tubular drag conveyors, flexible screw conveyors, bulk bag filling and discharging equipment, rotary airlocks, bucket elevators, pneumatic conveying, screeners, volumetric and gravimetric feeders, slide gates and diverters, container dischargers, blowers, samplers, nitrogen generators, dryers and coolers, and level detection systems.

PLANT FOOD SYSTEMS • BOOTH 309

Mark Brady • mbrady@plantfoodsystems.com • 559-731-1267
• 3330 W. Victoria Court • Visalia CA 93277

Plant Food Systems is an innovator of premium plant nutrition and protection products, pioneering new products and methods that have shaped the fruit, vegetable and field crop industries.

POLLEN BANK • BOOTH 1116

Dr. Thomas Ferrari • pollenbank@sbcbglobal.net • 661-364-0424 • 3201 Niles Road
• Bakersfield CA 93306

We supply pollen to growers of fruit and nut crops. Our pollen viability is based on the number of viable pollens per gram. Pollen is priced based on a standard predetermined dose: the number of viable pollens per acre. Our pollens are disinfected, thereby preventing potential spread of diseases. Our Boron and Calcium lab analysis evaluates flower fertility for growers, thereby maximizing pollen receptivity. Our pollen dispenser is the most effective pollen dispersal device on the market. Our founder holds a Ph.D. in horticulture and M.Sc. in botany and, for 35 years, has performed research on pollen biology and pollination. These attributes are essential for a successful supplemental pollination program.

POLYMER AG, INC. • BOOTH 307

Mark Hendrixson • mark@polymerag.com • 559-495-0234 • P.O. Box 282
• Orange Cove CA 93646

The world leader in polymers for use on crops during periods of climate-related stress. Anti-Stress 550 is a foliar-applied polymer concentrate that reduces moisture loss and damage from frost/freezing, high heat, water stress, transplant and transportation shock.

PRECISION AGRI-LAB • BOOTH 1117

Ken Wahlen • ken.wahlen@cpsagu.com • 559-479-2138 • 24730 Avenue 13
• Madera CA 93637

Precision Agri-Lab is an analytical laboratory dedicated to agriculture. The lab provides tissue, soil and water analyses to both growers and crop consultants throughout the western United States. Precision Agri-Lab also manages a network of 1,600 data collection sites and collects microclimatic weather and soil moisture data 24 hours a day. This network provides growers with valuable field information, which is required for efficient crop management, accessible anytime, anywhere.

PROJECT APIS M. • BOOTH P1

Christi Heintz • christih@cox.net • 520-834-2832 • P.O. Box 3157
• Chico CA 95927

Project Apis m. (PAm) has evolved to be the go-to organization at the interface of honey bees and almonds. PAm has infused over \$1.5 million into bee research since its inception in 2006 to provide growers with healthier bees and better pollination. We have broad-based support among beekeepers and growers of pollinated crops. PAm has leveraged stakeholder funds to obtain grants from Cdfa, North Dakota Department of Agriculture, Monsanto and Costco. Stop by our booth to see how YOU can help provide additional forage diversity for honey bees.

QUALI TECH, INC. • BOOTH 1206

Dan Biondi • danb@qualitechco.com • 209-668-8858 • 318 Lake Hazeltine Drive
• Chaska MN 55318

Plants and growers get more from Carbomin® Proven uptake ensures growers get the most from their nutrients. With Carbomin's unique carbohydrate technology, plants utilize nutrients where they are needed to correct deficiencies, allowing them to maximize their potential. Key advantages of Carbomin technology include effective translocates, as well as being compatible and safe. Carbomin's technology also protects each nutrient, making Carbomin compatible in a broad spectrum of fertilizer/pesticide blends. The Carbomin line includes calcium, copper, iron, manganese, magnesium, zinc and boron. For more information, please visit www.qualitechco.com or contact your local CPS representative.

R.F. MACDONALD COMPANY • BOOTH 905

Doug Vickery • doug.vickery@rfmacdonald.com • 209-576-0725
• 1549 Cummins Drive • Modesto CA 95358

R.F. MacDonald Company provides boilers, burners, pumps and controls for the food-processing industry. We give 24-hour service and have eight offices in California and Nevada.

REARS MANUFACTURING • BOOTH 211

Jim Goddard • rearsrep@digitalpath.net • 541-688-1002 • 2140 Prairie Road
• Eugene OR 97402

Rears Manufacturing is a family business directed by a second and third generation of Rears. We are a flexible manufacturer of specialized heavy-duty orchard equipment: PTO and engine-driven air-blast sprayers; PTO, hydraulic and engine-driven ground-application sprayers; PTO and engine-driven flail mowers and brush shredders; in-row hydraulic-drive grass mowers and brush sweepers; spray booms with stainless steel drift-control hoods for full broadcast and berm-spray applications.

RECOLOGY • BOOTH 1035

Dawn Ramsey • dramsey@recoLOGY.com • 209-545-7718 • P.O. Box 128
• Westley CA 95387

At Recology Grover Environmental Products, we recognize the value of soil health and the fundamental link between fertile soils, plant health and nutritious food. We understand that if high-quality food is to be harvested for our families' consumption, such produce will only be grown on healthy soils, biologically active with sufficient levels of essential minerals. As stewards of one of our most precious resources, our soil, we are dedicated to building soil quality.

RED BARN/PROGRESSIVE AG SPRAYERS/NORTHWEST TILLERS, INC. • BOOTH 321

Dan DeJong • judy@redbarneq.com • 209-545-2453 • P.O. Box 969
• Salida CA 95368

Red Barn Equipment Sales is a stocking dealer, providing sales, parts and service for Northwest Tillers, LectroBlast Sprayers, Deutz Fahr Tractors, Midwest Bio-Systems, KCI Harvest Equipment, Vrisimo Mowers, and DuraTech/Haybuster Equipment. Red Barn Equipment has units in stock for demonstration and sale. Northwest Tillers builds a rugged, high-quality tiller in Yakima, Washington. This tiller incorporates shredded prunings, levels and rolls the orchard or vineyard floor firmly without causing compaction at 3-4 MPH! Progressive Ag Sprayers offers manufacturing, service and sales of LectroBlast Electrostatic Agricultural Sprayers. New lines include a new engine-driven sprayer and new LectroSense Technology.

REDOX CHEMICALS, LLC. • BOOTH 540

Richard Evans • richard@redoxchem.com • 208-678-2610 • 130 S 100 W
• Burley ID 83318

Redox is the leader in plant and soil nutrition, producing a wide range of specialty fertilizers for the agricultural, turf and ornamental markets. The product formulations we manufacture deliver plant-ready available nutrients that have been proven successful in all growing conditions. Through proprietary nutrient complexing and chelation, and a production process incorporating both chemistry and biotechnology, Redox offers solutions that are pound-for-pound and dollar-for-dollar the most efficient in the industry.

REVTECH • BOOTH 1109

Martin Mitzkat • helene.bulteau@revtech.fr • 33475601633 • PA Champgrand, 50
Allée des Abricotiers • Lorient sur Drome • Drome 26270 • France

Revtech designs and manufactures continuous pasteurization and roasting systems for almonds, with flow rates from 500 to 20,000 pounds per hour. The technology combines gentle vibrational transport with dry electrical heating followed by a short minimal exposure to steam. Almonds are continuously pasteurized with no change in appearance or taste. Tests, following the ABC protocol and independently confirmed by Campden BRI laboratory, proved a complete eradication of Salmonella corresponding to an 8.2-log kill. Revtech achieved Proof of Principle, and units can be certified by the ABC.

RF BIOCIDICS • BOOTH 825

Crystal Orton • crystal.orton@rfbiocidics.com • 702-466-7143
• 830 Eubanks Drive, Suite D • Vacaville CA 95688

RF Biocidics is a food commodity treatment company focused on making food safer for consumers by providing an environmentally friendly, chemical-free, organic alternative for pasteurization and disinfestation. The APEX and SENTINEL systems consistently achieve reliable pathogen control, high throughput efficiency and cost-effective performance without the limitations of steam treatment or external heating. Our systems offer quick, convenient treatment with no change to sensory, nutritional or functional values. In addition to the sale or lease of systems, our in-house treatment service group provides a vehicle for customers to utilize this revolutionary process, ensuring enhanced food safety.

RIPON MANUFACTURING CO., INC. • SPONSOR

Ursula Navarro • ursula_209@msn.com • 209-599-2148 • 652 S. Stockton Avenue
• San Joaquin CA 95366

In 1963, a Swiss immigrant, Ernie Boesch began Ripon Manufacturing Company as a pioneer in equipment design for the then fast-growing almond industry in the San Joaquin Valley. Over the years, as the almond industry has flourished, RMC has grown. Ripon Manufacturing Company provides the almond hulling, shell and processing facilities worldwide with innovative design, quality fabrication and professional installation of nut processing equipment with installations overseas in South America, Australia, Spain, Siberia and Israel. Ripon Manufacturing Company supports our customers with a full-service parts department, in-house rebuild/repair to existing equipment and also onsite service.

ROBERTS RETIREMENT GROUP • BOOTH 216

Marie Davis • marie@robertsretirement.com • 702-496-2859
• 11992 W. Highway 88, Suite 2040 • Jackson CA 95642

Family-focused financial planning, we work with families to help build, protect and pass on their family wealth, values and purpose. Our services include comprehensive tax planning, wealth accumulation, estate planning, asset protection, legacy planning, life insurance and retirement planning.

SAN JOAQUIN SYSTEMS • BOOTH 410

Karen Dyrseth • karen@sjsystemscom • 209-577-4514 • P.O. Box 576627
• Modesto CA 95357

This year San Joaquin Systems, currently representing five companies, is highlighting Triple/S Dynamics Texas Shaker Screeners.

SATAKE • BOOTH 221 • COPPER SPONSOR

Jeff Sargent • jsargent@satake-usa.com • 209-551-3203
• 3416 Oakdale Road • Modesto CA 95355

Satake USA's 2012 Evolution RGB full-color sorting machine features fully digital image processing, enhanced 3-D sorting programs, LED illumination, high-resolution full-color cameras, intuitive GUI, high-density 5mm ejector system, increased capacity and internet connectivity to support Satake everywhere. Evolution is setting new standards in sorting performance for many almond sorting applications. ScanMaster II DE is the industry standard for huller in-shell almond sorting operations. This proven technology utilizes InGaAs IR technology to detect FM and visible wavelength technology to detect stain. Evolution and ScanMaster II DE are manufactured at Satake's Houston, Texas, facility.

SCHABEN INDUSTRIES • BOOTH 405

Jose Maldonado • jose.maldonado@schabenindustries.com • 661-391-9081
• 4450 State Road • Bakersfield CA 93308

Manufacturer of sprayers and liquid-handling products. We also have poly storage tanks.

SELECT HARVESTING USA • BOOTH 502

Sheryl Wheeler • swheeler@selectharvestusa.com • 209-668-2471
• 14827 W. Harding Road • Turlock CA 95380

Select Harvest USA is a grower, processor and shipper of California in-shell and natural whole almonds. In 2008, Spycher Brothers and North Valley Nut partnered to provide clientele with California's largest selection of almond meats and in-shell products under the Select Harvest name. With a combined grower base that spans the entire state, Select Harvest supplies worldwide markets with all varieties of whole natural California Almonds. Both companies are committed to Select Harvest's focus on excellence in quality control and customer service.

SIERRA GOLD NURSERIES • BOOTH 311

Jack Poukish • jack@sgtrees.com • 530-674-1145 • 5320 Garden Highway
• Yuba City CA 95991

Providing top orchardists with quality almond, walnut, pistachio and fruit trees since 1951, Sierra Gold is a full-service nursery providing growers with onsite service and ranch delivery from our local field representatives. All major almond varieties grown on traditional rootstocks, such as Nemaguard, Lovell, Marianna 26-24, Titan peach/almond hybrid, Hansen 536 Hybrid, and the new, advanced, clonal rootstocks, Krymsk 86 and Bright's Hybrid 5. Almond trees are available, both bareroot and potted. For a Harvest of Gold, Plant Sierra Gold!

SIMPLOT GROWER SOLUTIONS • BOOTH 229

David Genzoli • david.genzoli@simplot.com • 559-824-0873 • 6812 E. Grayson
Road • Hughson CA 95326

The J.R. Simplot Company is one of the largest privately held food and agribusiness companies in the nation, though, at heart, we're as small as a single farmer. We pioneer innovations in plant nutrition and food processing, research new ways to feed animals and sustain ecosystems and strive to feed a growing global population. At Simplot, we're in the business of Bringing Earth's Resources to Life.

SMARTCUBE®/ABM SCALE/JEM-ESP/CENTRAL VALLEY SOFTWARE DESIGN • BOOTH 1137

Tom Hollman • tom@vandenbrinkpkg.com • 402-740-1512
• 10237 Cimarron Woods Drive • LaVista NE 68128

Smartcube®: Strong barrier bag forms into a standalone, stackable cube when filled. Eliminates the need for a box, reduces packaging, packaging weight and overall bulk! Flowable products, especially tree nuts, are a perfect fit for Smartcube. Contact tom@vandenbrinkpkg.com. JEM – International: Provides packaging lines for the almond industry, including scales, conveyors, sewing pedestals, sealers, bag re-gusseters and palletizing equipment. ABM Scale Co.: Custom weighing solutions including bulk/retail filling systems, tote/supersack filling, sizing automation and data integration. Contact josh@abmscale.com. Central Valley Software Design: Our REACTS software provides inventory tracking, traceability, USDA management, grower reporting, scale automation and more. Contact ryan8evans@gmail.com.

SOIL BASICS CORPORATION • BOOTH 1228

Rob Myers • rob@soilbasics.net • 559-651-2772 • 10747 West Goshen Avenue
• Visalia CA 93291

Soil Basics Corporation began its mission to provide growers with technologically advanced solutions for improved plant health in 1995. Since then we have been involved with some of the most exciting products in the agricultural chemical/nutrient industry. Whether a grower would benefit from a specific nutrient program or a fertilizer injection machine, our common goal has always been to bring products to growers that assist them in achieving the type of production that enables success in today's demanding agricultural markets. From our People to our Products, Soil Basics has the answers for today's growers.

SOLARCITY • BOOTH 1130

Bill Camin • bcamin@solarcity.com • 559-840-7543 • 3055 Clearview Way
• San Mateo CA 94402

SolarCity is a national leader in solar power design, financing, installation and monitoring services.

SPECTRUM TECHNOLOGIES • BOOTH 1101

Tara Longshore • tlongshore@specmeters.com • 815-436-4440
• 12360 S. Industrial Drive • E Plainfield IL 60585

Spectrum Technologies is a global leader in weather monitoring, plant health, irrigation, nutrient-management and IPM technology. Our Cellular Frost Alert warns growers of approaching frost conditions miles away that could damage crops. Watchdog 2000 Series Weather Monitoring Stations allows growers to measure wind speed, air temperature, rainfall and solar radiation (plus more) with options to plug in up to eight external sensors that can read and help with irrigation, nutrient and IPM pest-management decisions. Over 15 station and logger choices are available. Users can choose the system that best fits their growing needs and budget. Spectrum has received 19+ AE50 awards for product ingenuity.

STANISLAUS IMPLEMENT & HARDWARE • BOOTH 1019

Bill George • bgeorge@holtca.com • 209-523-0781 • 526 Tenth & F
• Modesto CA 95354

Stanislaus Implement has been serving the agricultural industry and homeowners in Stanislaus, Merced and San Joaquin counties since 1919. Today, we sell new and used Massey Ferguson tractors and farm equipment, as well as Polaris ATVs and utility vehicles. We also provide a wide selection of parts for all the products we have offered over the years, including an extensive selection of agricultural implements from multiple brands. And as part of our commitment to be a one-stop farm center for our customers, our service department will help you get back up and running when you need it. Visit us online at www.stanislaus-implement.com for more information.

STERILIZATION AND FUMIGATION SERVICES • BOOTH 1005

Bill Lanning • blanning@bioreduction.com • 208-896-5331 • 3500 Shiells Road
• Newman CA 95360

Our proprietary H2O Express process is a low-temperature, low-pressure steam-based pasteurization system. This patented process utilizes newly developed technology that facilitates rapid penetration of steam and transfer of heat throughout the materials being pasteurized. Pasteurization is done in the final packaging to ensure a safe product for your customer.

JKB ENERGY
CAPTURING THE POWER OF NATURE

California's Solar Leader
for the Agriculture Industry

209.668.5303 jkbenergy.com

STYLE-LINE CONSTRUCTION • BOOTH 409

Frank Rodriguez • style-line@msn.com • 559-251-1797 • 1817 N. Helm, #106
• Fresno CA 93727

Style-Line Construction, Inc. has been building extraordinary metal structures for over three decades. We are a full-service construction company with an in-house design team and our own erection crews, so you can rest assured that we will be with you from start to finish. We specialize in custom, prefabricated steel building systems. Whether it's repairs, renovations, additions or complete turnkey facilities, our success has always been measured through customer satisfaction. Our professionalism, integrity and quality workmanship have earned us a reputation as one of the San Joaquin Valley's premier contractors. We Build Relationships!

SUN HARVEST, INC. • BOOTH 1105 • SPONSOR

Gabriela Sandoval • gabby.bsaf@orchardservice.com • 800-791-2212
• P.O. Box 127 • Walnut Grove CA 95690

Sun Harvest, Inc. provides the most versatile mechanical pruning equipment. Each piece of equipment was designed to fit the special requirements of the growers. Robert Maragliano has worked closely with the equipment manufacturers to ensure that specifications meet grower demand, even when it requires innovative modifications to existing machinery. The custom-designed equipment allows for extended reach, high-angle hedging, high topping and very narrow hedging.

SUREHARVEST • BOOTH 1017

Sandy Clifton • sclifton@sureharvest.com • 831-477-7797
• 2901 Park Avenue, Suite A2 • Soquel CA 95073

At SureHarvest, we help you integrate sustainability into your day-to-day business operations. Clients span the agrifood value chain and benefit from SureHarvest's market-leading expertise and experience working with growers, packer/shippers, processors, wineries and their trade associations. SureHarvest applies a business process approach, the Five P's of Sustainability, as the principal strategic framework to the much more variable conditions of farming, harvest logistics and packing/shipping.

SUTERRA, LLC • BOOTH 1202

Stephanie Williams • agsales@suterra.com • 866-326-6737
• 20950 N.E. Talus Place • Bend OR 97701

Suterra is the leading provider of bio-rational products for agricultural crop protection and commercial pest control. Suterra's flagship line of CheckMate agricultural products utilizes pheromones to disrupt the mating behavior of harmful pests. Suterra's research and technical staff has over a century's worth of combined experience in semi-chemical research, synthesis, pest behavior and agriculture. Our scientists enjoy a global reputation through their field work and published research.

SWECO • BOOTH 1006

Mike Ziegenmeyer • michaelz@sweco.com • 530-673-8949
• 8949 Colusa Highway • Sutter CA 95982

SWECO has been family owned and operated since 1946 with over 60 years of experience building the best agricultural and industrial machinery in the industry. From hydraulic cylinders to laser scrapers, we focus on building quality products that our customers can depend on. Our products are designed with the customer in mind, whether it is a gargantuan wheel tractor for use in the Amazon jungles of Brazil, a salt harvester for Baja Mexico or a tri-plane for California's agricultural community, SWECO Products is dedicated to building products that meet our customer's needs.

SYNGENTA • BOOTH 1025 • BRONZE SPONSOR

Greg Dickinson • greg.dickinson@syngenta.com • 916-783-1834, Ext.1602
• 4178 Douglas Boulevard, Suite 140 • Granite Bay CA 95746

Syngenta is one of the world's leading companies with more than 26,000 employees in over 90 countries dedicated to our purpose: Bringing plant potential to life. Through world-class science, global reach and commitment to our customers, we help to increase crop productivity, protect the environment and improve health and quality of life. For more information about us, please go to www.syngenta.com.

THE NURSERY COMPANY • BOOTH 1033

Josh De La Torre • josh@thealmondcompany.com • 559-232-8882
• 22648 Road 9 • Chowchilla CA 93610

The Nursery Company specializes in growing the highest-quality almond and walnut trees in the trade. Our rootstock selection includes Nemaguard, Nemared, Lovell, Marianna 26-24 and a wide selection of peach-almond hybrids, including Hansen 536, Red Titan I, Red Titan II and Red Titan III. The Nursery Company is committed to providing the highest-quality trees in the trade, combined with excellent service and always at the right price.

THE SOLAR COMPANY • BOOTH 1111

Rosie LeDoux • rosie@thesolarco.com • 510-888-9488, Ext. 730
• 20861 Wilbeam Avenue, Suite 1 • Castro Valley CA 94546

The Solar Company specializes in residential, commercial and agricultural solar-power system installations. We are located throughout Northern California and are headquartered in the San Francisco Bay Area. Go green, go solar!

TORO MICRO-IRRIGATION • BOOTH 406

Eric Baysinger • eric.baysinger@toro.com • 209-763-2439 • P.O. Box 471
• Wallace CA 95254

Toro is a worldwide manufacturer of premium drip irrigation products for agriculture.

TOXIMET LTD. • BOOTH 1011

Siro Perez • siro.perez@toximet.com • +44 1795 411 563 • 130 Abbott Drive, Kent Science Park • Sittingbourne Kent ME9 8AZ • United Kingdom
ToxiMet (www.toximet.com) has developed a revolutionary technology for detecting mycotoxins in food. The ToxiQuant system allows for easy mycotoxin testing by non-scientists and economically provides highly accurate results in less than 10 minutes. The first application of the system is the simultaneous accurate detection of Aflatoxins (B1, B2, G1, G2) in edible nuts at international regulatory levels, at a fraction of the time and cost of HPLC. Producers, traders and nut processors can now comply with the highest food safety standards, while rotating their stock much faster and reducing their testing costs. Numerous customers are already benefiting from the ToxiQuant system.

TRIPLE/S DYNAMICS • BOOTH 412

Celie Reid • creid@sssdynamics.com • 214-828-8657 • 1031 S. Haskell Avenue
• Dallas TX 75223

Triple/S Dynamics, with over a century of applications experience, is a leading manufacturer of conveying, screening and separating equipment for the processing industries. Through our partner, San Joaquin Systems, Triple/S Dynamics has been providing equipment to the California almond industry for over 40 years. Our diverse product line, tailored for the strenuous demands of almond processing, includes Texas Shaker Screeners, Slipstick Conveyors, Natural Frequency Vibrating Screen Conveyors and Sand/Stick Separators.

TURKHAN FOODS • BOOTH 314 • SPONSOR

Negaar Turkhan • accounts@turkhanfoods.com • 209-982-9933
• 17641 French Camp Road • Ripon CA 95366

Turkhan Foods was founded in 2007 as a trading company, only to expand in 2010 to a processor of both California Almonds and walnuts. Although a young company, there is a rich family history in the agriculture industry dating back to 1945 with a 40-acre pistachio orchard in Turkey. Established with trade relations in over 30 countries across five continents, Turkhan Foods has grown substantially since establishing themselves in Ripon, CA. They are dedicated to building lasting relationships within the industry by providing quality products which meet or exceed the customers' expectations, while providing profitability to our growers.

UNIVERSITY OF CALIFORNIA, AGRICULTURE AND NATURAL RESOURCES • RESEARCH POSTER AREA

Marissa Palin • mpalin@ucanr.edu • 800-994-8849
• 1850 Research Park Drive, #200 • Davis CA 95618

University of California, Agriculture and Natural Resources (UCANR) delivers healthier food systems, healthier environments and healthier Californians. From more bountiful berries to cleaner water, UCANR is the bridge between local issues and the power of UC research. UCANR advisors, specialists and faculty work hand in hand with industry professionals to enhance agricultural markets, address environmental concerns, protect plant health, and provide farmers with scientifically tested production techniques. With more than 300 peer-reviewed and field-tested publications, UCANR is your go-to source for science-based solutions. Learn more about UCANR publications at anrcatalog.ucanr.edu.

VALENT USA • BOOTH 1004

Robin Malm • rmalm@valent.com • 530-304-9678 • 1108 Westway Drive
• Woodland CA 95695

Valent USA, headquartered in Walnut Creek, CA, develops and markets products in the U.S. and Canada that protect agricultural crops, enhance crop yields, improve food quality, beautify the environment and safeguard public health, including a well-known line of quality herbicides, insecticides, plant growth regulators, fungicides and seed protection products for agricultural and professional use. We specialize in marketing and sales of bio-rational and traditional chemical products and are a leading crop protection firm serving the agricultural and non-crop products markets in North America. Valent has a broad and growing line of innovative fungicides, herbicides, insecticides and plant growth regulators. www.valent.com

VALLEY TOOL & MFG CO, INC. • BOOTH 910

Vaughn Brenda • vaughn@valleytoolmfg.com • 209-883-4093 • P.O. Box 220
• Hughson CA 95326

Based in California, Valley Tool Manufacturing builds orchard flail mowers and shredders. We are also an innovator of the electrostatic orchard/vineyard sprayer by Windmill Spraymaster.

VAN DE SANDT CONSTRUCTION B.V. • BOOTH 1132

Jelle van de Sandt • Jelle@jmvandesandt.com • 010-422-1177 • Kleiweg 307
• Rotterdam The Netherlands 3051 XR

Treenuts – simply connect. Treenuts is an online tool that assists sellers and buyers of California Almonds from all over the world to interact. Become a member for free and experience all advantages this online tool has to offer. Why register? Free: registration, access to profile database, reports, online market. Easy: enjoy our easy-to-use interface, making life simple not complicated. Quick: connect to any or every company in the blink of an eye. Safe: Treenuts is secured by a personal password and SSL encrypted by Dolphin. Visit www.treenuts.eu and register for free to become a member now.

VERDEGAAL BROTHERS, INC. • BOOTH 403

Jim Gregory • jgregory@verdegaalbrothers.com • 559-582-9205
• 13555 S. 11th Avenue • Hanford CA 93230

High bicarbonates and high pH irrigation waters are issues with water quality and often limit crop productivity. Lowering the pH with an acid improves water quality in these conditions. We are promoting installations to inject sulfuric acid to safely lower the water pH on a continuous basis to desirable levels. Also featured are custom soil applications of sulfuric acid to improve water penetration and to improve plant growth in high pH calcareous soils. Verdegaal Brothers is also a manufacturer of urea-sulfuric acid fertilizers and a distributor for both soil-applied gypsum and solution-grade gypsum.

VICAM • BOOTH 312

Jim Cary • jcary@vicam.com • 901-359-0159 • 34 Maple Street • Milford MA 01757
VICAM, A Waters business, is dedicated to the development and marketing of USDA- and AOAC-approved food-safety diagnostics for the qualitative and quantitative screening of aflatoxins and all mycotoxins of importance to food and agricultural markets worldwide. VICAM products are used with confidence in more than 100 countries to ensure a safe, wholesome food supply. We guarantee satisfaction with world-class customer service through a global sales and distribution network. For further information, please contact us at vicam@vicam.com or visit our Web site at www.vicam.com.

VISYS – ADVANCED SORTING SOLUTIONS, INC. • BOOTH 411

Raf Peeters • usa@visysglobal.com • 510-316-4322
• 3300 Industrial Boulevard, Suite 800 • West Sacramento CA 95691

In addition to our series of optical, laser and X-ray sorters, Visys is proud to present its high-end hyperspectral BioPrint sorter. This sorter will bring new dimensions to your almond sorting process by combining unmatched detection capabilities with extremely low false rejects. Our BioPrint sorter has already proven itself on both the almond hulling and processing side.

VOGEL SALES ENGINEERING • BOOTH 937

Steve Rocca • steverocca@vogelsaleseng.com • 916-364-8686
• 9521 Folsom Boulevard • Sacramento CA 95827

Vogel Sales Engineering is a supplier of premium processing and packaging equipment for the California nut industry, including innovative, leading-edge products, such as robotic sorting tables for almonds. Equipment offerings include BM&M Screeners and Sizers, Oliver Gravity Tables, Fortress Metal Detectors, Dura-Pack Pouch Baggers, Premier Tech Packaging Systems, Fanuc Robotic Systems, Taylor Bagging Scales, Fischbein Bag Closing Equipment and many others. Since 1978, Vogel has been dedicated to service to the customer through expert product and process knowledge, as well as efficient and economic product application.

WATERFORD IRRIGATION SUPPLY, INC. • BOOTH 506

John Nydam • jnydam@sbcglobal.net • 209-874-1386 • 12500 Bentley
• Waterford CA 95386

WATER!!! The increasing demand for one of our most precious natural resources due to swelling populations and environmental concerns makes having enough water a top priority. Waterford Irrigation Supply, Inc. is here to help you make the most of your water supply. Our engineers have the experience and technology to design a water-efficient irrigation system tailored to your specific needs. Stop by and visit our friendly staff. It'll be worth your time!

WEISS MCNAIR LLC • BOOTH 536

Fred Corona • fcorona@weissmcnair.com • 530-891-6214 • 531 Country Drive
• Chico CA 95928

Weiss McNair has a tradition of manufacturing excellence as the leader in high-quality nut harvesting equipment since 1951. Specifically focused on tractor-pulled and self-propelled harvesters, sweepers and blowers, our equipment efficiently harvests the widest variety of nut crops in the world, including almonds, walnuts, pecans, hazelnuts, macadamia nuts, cashews, chestnuts and jobo beans. As a market leader, we provide our customers high-quality equipment, backed by superior in-field and factory service. Our equipment is used in all nut growing regions of the world, including Australia, Argentina, Canada, Chile, France, Italy, Israel, Mexico, South Africa, Portugal, Spain and the United States.

WELLMARK • BOOTH 915 • SPONSOR

Ed Fitzharris • edfitzharris@bluerock-inc.com • 847-842-1588
• 415 W. Sunset Road • Barrington IL 60010

Ant control with Extinguish Ant Bait. Extinguish targets protein-feeding California fire ants, pavement and red imported fire ants with low-use rates that make Extinguish very economical.

WELLS FARGO INSURANCE SERVICES • BOOTH 1218

Brandon Stegall • brandon.stegall@wellsfargo.com • 916-566-2865
• 2480 Natomas Park Drive • Sacramento CA 95833

Wells Fargo Insurance Services is a full-service international insurance brokerage. We help create risk management solutions for our clients and serve the agriculture and food industry with award-winning and claim-solving experience. Wells Fargo Insurance Services has earned a reputation for creativity and hard work, which equals results, not activity!

WEST-LINK CORPORATION • BOOTH 1118

Brian Sears • bps@west-link.com • 831-477-2840 • 331 Capitola Avenue, Suite E
• Capitola CA 95010

In business locally for more than 42 years, West-Link Corp. provides quality processing and packaging equipment to the Almond Industry. Exclusively representing Buhler Sortex Electronic Sorters for sorting in partial to custom turnkey systems and Thermo Fisher Scientific Metal detection and check weigh and x-ray systems. Processing companies, such as RBM Bucket elevators, Columbia Palletizing, Piab Conveying, American International Pneumatic Separators and Conveying. Packaging companies, such as Pacmac and Toyo baggers. Case erecting, filling, sealing. West-Link has sales, service, parts, all at one company. www.west-link.com

WESTBRIDGE AGRICULTURE PRODUCTS • BOOTH 435

Margaret Lewis • margaret@westbridge.com • 760-599-8855
• 1260 Avenida Chelsea • Vista CA 92081

Westbridge Agricultural Products is a premier manufacturer of specialty fertilizers and adjuvants that help improve crop quality and yield. Its propriety products include Organic TRIGRRR, Organic BioLink, SUNBurst and Earthtrend brands. Since 1982, Westbridge has been committed to offering safe and effective products to growers of all sizes.

WESTERN FARM PRESS

Darrah Parker • dparker@farmpress.com • 662-627-0126 • 14920 U.S. Highway 161
• Clarksdale MS 38614

Western Farm Press is the California Almond industry's number one source for production information—in print and online. *Western Farm Press* prints in-depth articles on almond growers and reports on the latest almond production and marketing information. "Western Farm Press Daily" provides daily electronic information on the latest news of California agriculture. "Tree Nut Farm Press" is a twice monthly e-newsletter that highlights producer practices and the current almond crop information. Two hours of DPR-accredited continuing education is available free online at www.westernfarmpress.com in an almond disease management course developed by *Western Farm Press* and Almond Board of California.

WESTERN FRUIT GROWERS • BOOTH 1106

Keith Christensen • kschristensen@meistermedia.com
• 3509 Coffee Road, Building D-18 • Modesto CA 95355

We deliver valuable growing information to almond growers the way they like to receive it, through the printed magazine, eNewsletters, forums, Web site, online videos, webinars and in person.

WESTERN GROWERS INSURANCE SERVICES • BOOTH 1029

Kristen Kirsch • kkirsch@wga.com • 949-885-2248 • 17620 Fitch Street
• Irvine CA 92612

Western Growers Insurance Services is a full-service insurance agency providing insurance products and services tailored specifically for the agricultural industry and beyond. We are committed to providing exceptional service, professional advice and high-quality products at competitive prices. Our regional locations throughout California and Arizona allow us to work directly with our customers to provide proactive service that sets us apart from the competition. We specialize in business insurance, employee health benefits, risk management, workers' compensation, safety and loss control services, personal lines and more. Visit us online at www.WGInsuranceServices.com.

WILKEY INDUSTRIES • BOOTH 1018

Jack Wilkey • jack@wilkeyindustries.com • 209-656-0561 • 803 S. Tegner Road
• Turlock CA 95380

Wilkey Industries is a recognized leader in solving complex agricultural and industrial fabrication and service problems through the development and enhancement of processing equipment and our client, vendor and employee relationships. Wilkey specializes in dust control and product separation by means of targeted system aspiration. Our customers enjoy our attention to detail, personal relationships and an exceptional value.

YARA NORTH AMERICA, INC. • BOOTH 1119 • SPONSOR

Jon Collison • jon.collison@yara.com • 661-589-8796 • 10046 Seneca Falls Avenue
• Bakersfield CA 93312

Yara is the world's largest supplier of mineral fertilizer and offers the almond grower a full range of fertilizers sustaining high yield and high quality. Liquid YaraLiva, CN-9 and CAN-17 provide nitrogen and calcium for strong trees yielding high-quality almonds. YaraMila NPKs are ideal to bring new plantings rapidly to full production, and our Potassium Sulfate replenishes the high K-demand of almonds. A complete line of YaraVita micronutrients for foliar or soil application rounds out Yara's portfolio. Fertilization, foliar or dry application—Yara has all the fertilizers needed for first-rate almond production.

YOSEMITE FARM CREDIT • BOOTH 813 • SPONSOR

Melba Miyamoto • mem@yosemitefarmcredit.com • 209-667-2366 • P.O. Box 3278
• Turlock CA 95381

Yosemite Farm Credit is the farmer's choice for agriculture financing in Stanislaus, Merced, Tuolumne and Mariposa counties. We are a farmer-owned cooperative, dedicated to serving our neighbors in the agricultural community with the best financial products, solutions and customer service in the industry, and we offer a comprehensive array of financing and banking options to meet all your agriculture-enterprise needs, such as long-term loans for land or buildings.

We invite you to come by or call any one of our six convenient offices to learn how Yosemite Farm Credit can help you prosper. www.yosemitefarmcredit.com

Almond orchard health, you say? You're speaking our language.		
Tehama, Glenn, Butte, Colusa, Sutter, and Yuba Counties	Tim Carpenter	530-899-7168
Yolo, Solano and San Joaquin Counties	Josie Hugie	916-475-9850
Stanislaus and N. Merced Counties	Ashley Bandoni	209-761-9140
S. Merced and Madera Counties	Don Paradise	559-802-6431
Fresno County	Meggie Gilbert	559-203-0652
Kings and Tulare Counties	Kyle Shore	559-786-5438
Kern County	Roger Williams	661-747-9243

© 2012 Syngenta. Important: Always read and follow all bag tag and label instructions before buying or using Syngenta products. The instructions contain important conditions of sale, including limitations of warranty and remedy. The Alliance Frame, the Purpose Icon and the Syngenta logo are trademarks of a Syngenta Group Company. Syngenta Customer Center: 1-866-SYNGENT(A) (796-4368). www.FarmAssist.com MW 1LMC2044 10/12

Almond Board of California
1150 Ninth Street, Suite 1500
Modesto, CA 95354 USA
T: 209.549.8262
F: 209.549.8267
AlmondBoard.com

Printed in USA © 2012 Almond Board of California
*Almond Board of California does not directly endorse
the products or events of the sponsors.*

Document #2012IR0074

