

# THE ALMOND CONFERENCE

**DECEMBER 3-5, 2013 • SACRAMENTO, CA**

**EXHIBIT HALL HOURS:**

Wednesday, December 4:  
9:30 a.m. – 5:30 p.m.

Thursday, December 5:  
8:00 a.m. – 5:00 p.m.

Tweet using #AlmondConf  
to share your thoughts  
and lessons learned.





**Altrevin**<sup>®</sup>  
Fire Ant Bait Insecticide

**Treevix**<sup>®</sup>  
Herbicide

# BASF is proud to be a sponsor of the Annual Almond Industry Conference.

We're also proud to offer innovative products for almond growers, including **Altrevin**<sup>®</sup> fire ant bait insecticide, which features the fastest speed of kill in the Specialty crop industry as well as **Treevix**<sup>®</sup> herbicide, a tree-safe, postemergent solution for controlling tough broadleaf weeds. Call your BASF Authorized Retailer or visit [Healthy-Yields.basf.us](http://Healthy-Yields.basf.us) to find out more.

Be on the lookout for a new fungicide from BASF for your almonds.

 **BASF**  
The Chemical Company

Always read and follow label directions. Altrevin and Treevix are registered trademarks of BASF. ©2013 BASF Corporation. All Rights Reserved. APN 13-SPC-0001

## ALMOND CONFERENCE

DECEMBER 3-5, 2013 • SACRAMENTO, CA



Dear Almond Community Members and Stakeholders,

Welcome! The Almond Board of California Directors and staff are very pleased that you are attending the 41st Almond Conference. We hope that you will avail yourselves of as much learning as possible over the 2½ days of presentations and discussions. As has become our tradition, we pack as much valuable information into the agenda as possible, so be sure to study the program and select the topics that will be most relevant to you. And have fun!

The Almond Conference affords our community the opportunity to get together and “break bread” once a year. With the constant developments and challenges in the growing and marketing of our almond crop, it is important that we set aside one time during the year when we can stop, listen and learn. The Almond Conference is that unique opportunity when growers, handlers, PCAs, crop input providers, regulators and customers can gather to take stock of our latest achievements and evaluate our upcoming opportunities.

The Almond Conference is also a time for family and friends. We are a family industry, and despite the growth we have experienced, we continue to treasure the familiarity that we have always enjoyed. So, over the course of the conference, be sure to take time to talk with as many friends and acquaintances as you can in the hallways, over coffee or while sharing a meal.

In addition to the many presentations on myriad topics, the exhibit floor beckons! New this year is a short-subject classroom, which will feature brief presentations given by subject-matter experts. Also new for 2013 is the location of the Marketing Around the World demonstrations, which will be held in and around the Almond Board of California booth, located right in the middle of the exhibition hall.

Last but not least is the gala dinner, which is always a great way to cap off the conference before everyone heads home. This year features a comedy trio! Juston McKinney, Mark Eddie and Tom Cotter will have us in stitches as they each serve up their unique style of humor. Be sure to reserve your seat by signing up at the conference registration area.

I wish you a great conference as the almond community gathers to greet one another and as we dedicate our efforts toward taking the California Almond business to new levels of success.

Warm regards,

Richard Waycott

President & CEO





## REMEMBER WHEN...

You were graduating from high school and felt daunted by the idea of paying for college?



Now is your chance to make a difference in a graduating senior's life. Visit The Almond Conference's silent auction for a chance to win specialty gifts ranging from toy tractors to sample herbicides to work boots to hunting gear to destination vacations and everything in between!



100% of the proceeds from the silent auction will be donated to the California FFA Association and used for scholarships.

Be sure to visit the auction in Hall A + B both Wednesday and Thursday to bid on unique items.

The auction will close at 4:00 p.m. on both Wednesday and Thursday, so be sure to stop by to see if you won and complete your payment.



# DECEMBER 3 DAY 1: AGENDA+ OVERVIEW



## DAY 1 : TUESDAY, DECEMBER 3 AGENDA

**12:00 P.M.**  
**REGISTRATION OPENS**  
East Lobby, 3rd Floor

**1:00–2:30 P.M.**  
**Nitrogen Management and Budgeting**  
Room 308–313  
Moderator: Gabriele Ludwig (ABC)  
Speakers: Patrick Brown (UC Davis), Sebastian Saa Silva (UC Davis)  
**CCA Units: 1.0 Nutrient Management**  
**DPR Units: 0.5 Other**

**1:00–2:30 P.M.**  
**Healthcare Reform... Now What?**  
Room 306–307  
Speaker: Michelle Montoya (Filice Insurance)

**2:45–4:15 P.M.**  
**Irrigation Strategies for Drought Management**  
Room 308–313  
Moderator: Bob Curtis (ABC)  
Speakers: Ken Shackel (UC Davis), David Doll (UCCE-Merced County), Allan Fulton (UCCE-Tehama County), Blake Sanden (UCCE-Kern County), Bruce Lampinen (UC Davis)  
**CCA Units: 0.5 Soil and Water Management, 1.0 Crop Management**

**2:45–4:00 P.M.**  
**Rules and Regs: Dotting the I's and Crossing the T's**  
Room 306–307  
Moderator: Gabriele Ludwig (ABC)  
**CCA Units: 0.5 Integrated Pest Management**  
**DPR Units: 1.0 Laws and Regulations**

**2:45–4:00 P.M.**  
**High Speed Rail: There Is a Train Coming**  
Room 314  
Moderator: Julie Adams (ABC)  
**CCA Units: 0.5 Professional Development**

**4:30–5:30 P.M.**  
**What Will Ag Look Like Tomorrow?**  
Room 308–313  
Moderator: Richard Waycott (ABC)

**5:30–7:00 P.M.**  
**OPENING RECEPTION**  
*Sponsored by BASF*  
East Lobby, 3rd Floor

*Schedule and Continuing Education Credits subject to change.*



### RESTAURANT DISCOUNTS

Many Sacramento restaurants are offering discounts to The Almond Conference attendees. A list of all restaurants offering "Show Your Badge" discounts can be found in your conference bag.

## ALMOND BOARD OF CALIFORNIA BOOTH #623

A lot will be happening at the ABC Booth this year, so be sure to stop by to learn more about:

**INDUSTRY PROGRAMS & RESOURCES:** Receive information on the California Almond Sustainability Program (CASP) and Almond Leadership Program. You will also be able to pick up your copy of the Research Update (i.e., the Proceedings), a Guide to California Almonds poster and other important industry resources.

**MARKETING AROUND THE WORLD:** ABC Regional Marketing Representatives will be available during all dedicated trade show times to provide you an overview of what ABC is doing to drive global demand for California Almonds in key almond snacking markets—North America, Europe, India, China and South Korea. Also, our food professional team will be on hand to share exciting news about the use of almonds in global chocolate.

**SHOP:** Come by to see what new California Almond apparel we have this year for purchase. We'll also be selling our trendy, on-the-go almond snack tins (almonds not included) at a discounted price and *The Almond Story* DVD.



## DAY 1 : TUESDAY, DECEMBER 3 WORKSHOP SESSION OVERVIEW

**Nitrogen Management and Budgeting**  
Room 308–313  
**1:00–2:30 P.M.**  
Moderator: Gabriele Ludwig (ABC)  
Speakers: Patrick Brown (UC Davis), Sebastian Saa Silva (UC Davis)  
**CCA Units: 1.0 Nutrient Management**  
**DPR Units: 0.5 Other**  
The new in-season nitrogen budget model is a "win" on all counts: improved yields, reduced input costs, and less potential for offsite movement into ground and surface water. This workshop will cover how to implement this updated in-season nutrient budget model based on information from recent Almond Board and USDA-funded research. It is also an opportunity to learn about some of the requirements of the Irrigated Lands Regulatory Program.

**Healthcare Reform... Now What?**  
Room 306–307  
**1:00–2:30 P.M.**  
Speaker: Michelle Montoya (Filice Insurance)  
With the Individual Mandate still moving forward but the Employer Reporting Mandate delayed, employers everywhere are scratching their heads in confusion and frustration. In this informative and educational seminar, we will discuss the status of the various mandates and how you can expect these changes to affect your employee benefit program.

**Irrigation Strategies for Drought Management**  
Room 308–313  
**2:45–4:15 P.M.**  
Moderator: Bob Curtis (ABC)  
Speakers: Ken Shackel (UC Davis), David Doll (UCCE-Merced County), Allan Fulton (UCCE-Tehama County), Blake Sanden (UCCE-Kern County), Bruce Lampinen (UC Davis)  
**CCA Units: 0.5 Soil and Water Management, 1.0 Crop Management**  
Tightening water supplies are a critical issue for many growers. Even for those who have sufficient water, effective irrigation management is key to long-term orchard productivity and health. This workshop will include new information on best season-long strategies under different water availability scenarios and is an opportunity for all, regardless of water supply, to fine-tune irrigation practices.

**Rules and Regs: Dotting the I's and Crossing the T's**  
Room 306–307  
**2:45–4:00 P.M.**  
Moderator: Gabriele Ludwig (ABC)  
**CCA Units: 0.5 Integrated Pest Management**  
**DPR Units: 1.0 Laws and Regulations**  
Never before has the regulatory environment been more complex or more important. New food safety requirements, EPA advisory to protect bees, pesticide residues, water quality—everywhere you turn, there is something new you need to think about. And that's before you even set foot in the orchard! This symposium will discuss some of the new regulations that will be impacting the way we farm today and tomorrow.

**High Speed Rail: There Is a Train Coming**  
Room 314  
**2:45–4:00 P.M.**  
Moderator: Julie Adams (ABC)  
**CCA Units: 0.5 Professional Development**  
First approved by voters in 2008, construction of the first segment between Madera and Fresno of the California High Speed Rail (HSR) project began during the summer of 2013. The project is not without controversy, as lawsuits aimed at halting the project await final decision. The panel will discuss the status of the HSR project as well as plans for additional segments of the rail. Completion of the Central Valley portion is expected by 2017.

**What Will Ag Look Like Tomorrow?**  
Room 308–313  
**4:30–5:30 P.M.**  
Moderator: Richard Waycott (ABC)  
Are you a small farm or large farm? Do you ship local or global? Can you be sustainable and profitable? Growers will have to "be all, do all" if they are to meet the challenges facing agriculture in the coming years. ABC Chairman Bill Harp and ABC CEO Richard Waycott will share some of their thoughts about the state of our industry and prospects for its future. USDA leadership has also been invited to provide their perspective on issues ranging from USDA farm programs for specialty crops to nutrition programs, marketing and production support.





# BORRELLUSA

[www.equipment-for-almonds.com](http://www.equipment-for-almonds.com)



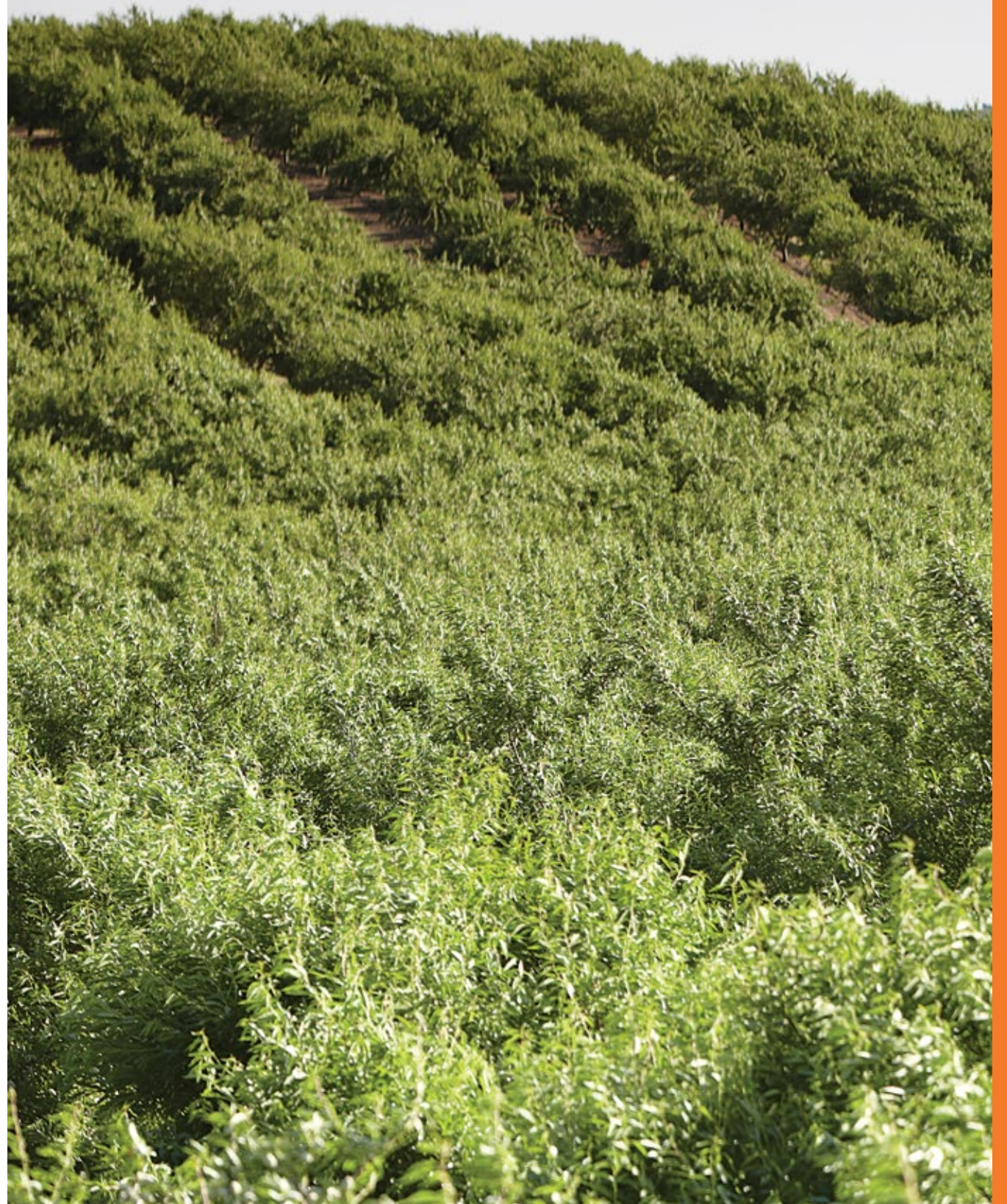
**hulling** shelling **sorting** sizing  
 conveying **automation** roasting drying  
**blanching** slicing **slivering** dicing  
**milling** processing **cleaning**  
 storage **packaging** **pasteurization**



260-262 Riggs Ave Merced, CA. 95341 USA  
 (888) 526-7735 / (209) 726-3655



## DECEMBER 4 DAY 2 : AGENDA+ OVERVIEW





## DAY 2: WEDNESDAY, DECEMBER 4 CROP OF CHOICE AGENDA

**7:00 A.M.**  
**REGISTRATION OPENS**  
East Lobby, 3rd Floor

**8:30–9:30 A.M.**  
**Driving Global Demand for California Almonds**

Room 308–313  
Moderator: John Talbot (ABC)  
Speakers: John Talbot (ABC), Buddy Ketchner (Sterling-Rice Group), Aaron Lau (Cheil Greater China)

**CCA Units: 1.0 Professional Development**

**9:30 A.M.**  
**Trade Show Open**  
Hall A + B

**9:30–10:30 A.M.**  
**Dedicated Trade Show Time + Marketing Around the World**  
Hall A + B, **ABC Booth #623**

**10:10–10:30 A.M.**

**METAL SPONSOR PRESENTATION**

*Syngenta*  
**Enhancing Bee Health**  
Almond Stage, Hall A + B

**10:35–11:40 A.M.**  
**Food Safety and FSMA: Leveraging Our Almond Industry Practices**

Room 308–313  
Moderator: Tim Birmingham (ABC)  
**CCA Units: 1.0 Professional Development**

**11:40–12:00 P.M.**

**METAL SPONSOR PRESENTATION**

*BASF*  
**Not All Fungicides Are Created Equal: Introducing Merivon® Fungicide for Almonds**  
Room 308–313  
Moderator: Richard Waycott (ABC)  
Speaker: Nick Schweizer (BASF)

**12:00–1:15 P.M.**  
**Luncheon – Water: Are We Still at the Wishing Well?**

*Sponsored by Yosemite Farm Credit*  
Hall C  
Moderator: Richard Waycott (ABC)  
**CCA Units: 1.0 Soil and Water Management**

**1:15–2:15 P.M.**  
**Dedicated Trade Show Time**  
Hall A + B

**1:25–1:55 P.M.**

**METAL SPONSOR PRESENTATION**

*JKB Energy*  
**Meter Aggregation: A Game-Changer for Agriculture**  
Almond Stage, Hall A + B  
Speaker: Rich Borba (JKB Energy)

**2:00–3:30 P.M.**

**Research Updates: Speed Dating**  
Room 308–313  
Moderator: Bob Curtis (ABC)

**3:30–5:00 P.M.**

**Research Poster Session**  
Hall A + B  
Featured Topics: Horticulture, Replant, Variety and Rootstock Evaluation and Breeding; Crop Mapping and Forecasting  
**CCA Units: 0.5 Other**

**3:40–4:40 P.M.**

**Sustainability and Almonds: Where Are We?**  
Room 308–313  
Speakers: Gabriele Ludwig and Tim Birmingham (ABC), Jeff Dlott (SureHarvest, Inc.)  
**CCA Units: 0.5 Soil and Water Management, 0.5 Nutrient Management, DPR Units: 1.0 Other**

**4:30–5:30 P.M.**

**AHPA General Meeting**  
Room 306–307

**5:30–6:30 P.M.**

**Field Quality: Stockpile Management and Concealed Damage**  
Room 308–313  
Moderator: Bob Curtis (ABC)  
Speakers: Bruce Lampinen (UC Davis), Franz Niederholzer (UCCE-Sutter, Yuba, Colusa Counties)  
**CCA Units: 1.0 Crop Management**

*Schedule and Continuing Education Credits subject to change.*



Come visit the almond industry trade show in Hall A + B 9:30 a.m.–5:30 p.m.

## DAY 2: WEDNESDAY, DECEMBER 4 NUT OF CHOICE AGENDA

**7:00 A.M.**  
**REGISTRATION OPENS**  
East Lobby, 3rd Floor

**8:30–9:30 A.M.**  
**Driving Global Demand for California Almonds**

Room 308–313  
Moderator: John Talbot (ABC)  
Speakers: John Talbot (ABC), Buddy Ketchner (Sterling-Rice Group), Aaron Lau (Cheil Greater China)

**CCA Units: 1.0 Professional Development**

**9:30 A.M.**  
**Trade Show Open**  
Hall A + B

**9:30–10:30 A.M.**  
**Dedicated Trade Show Time + Marketing Around the World**  
Hall A + B, **ABC Booth #623**

**10:10–10:30 A.M.**

**METAL SPONSOR PRESENTATION**

*Syngenta*  
**Enhancing Bee Health**  
Almond Stage, Hall A + B

**10:35–11:40 A.M.**  
**Growth by Leveraging Consumer Insights**

Room 306–307  
Moderator: Stacey Humble (ABC)  
Speaker: Buddy Ketchner (Sterling-Rice Group)  
**CCA Units: 1.0 Professional Development**

**11:40–12:00 P.M.**

**METAL SPONSOR PRESENTATION**

*BASF*  
**Not All Fungicides Are Created Equal: Introducing Merivon® Fungicide for Almonds**  
Room 308–313  
Moderator: Richard Waycott (ABC)  
Speaker: Nick Schweizer (BASF)

**12:00–1:15 P.M.**  
**Luncheon – Water: Are We Still at the Wishing Well?**

*Sponsored by Yosemite Farm Credit*  
Hall C  
Moderator: Richard Waycott (ABC)  
**CCA Units: 1.0 Soil and Water Management**

**1:15–2:15 P.M.**  
**Dedicated Trade Show Time**  
Hall A + B

**1:25–1:55 P.M.**

**METAL SPONSOR PRESENTATION**

*JKB Energy*  
**Meter Aggregation: A Game-Changer for Agriculture**  
Almond Stage, Hall A + B  
Speaker: Rich Borba (JKB Energy)

**2:00–3:30 P.M.**

**Protecting Our Reputation in a Changing World**  
Room 306–307  
Moderator: John Talbot (ABC)  
Speaker: Sean Smith (Porter Novelli)  
**CCA Units: 1.0 Professional Development**

**3:30–5:00 P.M.**

**Dedicated Trade Show Time**  
Hall A + B

**3:40–4:40 P.M.**

**Sustainability and Almonds: Where Are We?**  
Room 308–313  
Speakers: Gabriele Ludwig and Tim Birmingham (ABC), Jeff Dlott (SureHarvest, Inc.)  
**CCA Units: 0.5 Soil and Water Management, 0.5 Nutrient Management, DPR Units: 1.0 Other**

**4:30–5:30 P.M.**

**AHPA General Meeting**  
Room 306–307

*Schedule and Continuing Education Credits subject to change.*

Be sure to visit the Almond Board booth #623 to pick up the latest industry resources and learn where California Almonds are making the biggest impact around the globe.



## DAY 2: WEDNESDAY, DECEMBER 4 OVERVIEW

### Driving Global Demand for California Almonds

Room 308-313  
8:30-9:30 A.M.

Moderator: John Talbot (ABC)  
Speakers: John Talbot (ABC), Buddy Ketchner (Sterling-Rice Group), Aaron Lau (Cheil Greater China)  
**CCA Units: 1.0 Professional Development**  
Building consumer demand in the global marketplace has become increasingly difficult in our ever-changing world. Consumers are bombarded with new products claiming all kinds of different benefits, product loyalty is waning and speed of light social media can change perceptions overnight. Yet we continue to see the demand for California Almonds grow. The fundamental reason for this is that consumers continue to derive greater and greater value from almonds and products containing almonds. In this kickoff symposium we will share with you the Almond Board of California's long-term strategic approach to building demand across markets, categories and target consumers. We will explore the importance of creating a powerful consumer value proposition and review some of our current efforts to make this happen.

### Luncheon – Water: Are We Still at the Wishing Well?

Hall C  
12:00-1:15 P.M.

*Sponsored by Yosemite Farm Credit*  
Moderator: Richard Waycott (ABC)

**CCA Units: 1.0 Soil and  
Water Management**

Representatives from state government leadership will provide an overview of most likely scenarios that will ultimately result in a long-term solution for water storage and conveyance in California. This amazingly complex challenge has many wondering if there will ever be a solution that will accommodate most Californians' needs. Over lunch, you will hear about the latest proposals and tactics that may provide a way forward for this decades old, seemingly intractable problem.

## DAY 2: WEDNESDAY, DECEMBER 4 CROP OF CHOICE OVERVIEW

### Food Safety and FSMA: Leveraging Our Almond Industry Practices

Room 308-313  
10:35-11:40 A.M.

Moderator: Tim Birmingham (ABC)

**CCA Units: 1.0 Professional  
Development**

Food safety regulations in the U.S. are undergoing their biggest revision in decades. The Food Safety Modernization Act (FSMA) rules are presenting challenges across the agriculture supply chain, from growers to shippers. This symposium will explore how the almond industry is "ahead of the curve" as a result of proactive adoption of education and risk-management procedures and what FSMA may mean in terms of additional requirements.

### Research Updates: Speed Dating

Room 308-313  
2:00-3:30 P.M.

Moderator: Bob Curtis (ABC)

**Continuing Education Credits, CCA  
and DPR will be finalized at the event.**

For more than 40 years, the Almond Board of California's research programs have advanced yield, quality and environmental stewardship, contributing to the growth and success of the industry. Almond Board-funded researchers have helped to identify areas of opportunity and success through all parts of the growing lifecycle. Be sure to attend this speed-dating format of six-minute updates by researchers, offering insight into a number of ongoing projects. Researchers will also be available at poster sessions during the social hour following their presentations, giving conference attendees a chance to ask follow-up questions.

### Speakers and Research Topics:

- Almond Culture & Orchard Management, Roger Duncan, UCCE-Stanislaus County
- Integration of Tree Spacing, Pruning & Rootstock, Roger Duncan, UCCE-Stanislaus County
- Field Evaluation of Rootstocks, Roger Duncan, UCCE-Stanislaus County
- Rootstock Disease Resistance & Breeding, Dan Kluepfel, USDA-ARS, Davis, CA
- Improved Strategies Replant Management, Greg Browne, USDA-ARS, Davis, CA
- Almond Soil Fumigation and Alternatives Studies, David Doll, UCCE-Merced County
- TIF Tarps for Fumigation: Minimize Emissions and Improve Efficacy, Suduan Gao, USDA-ARS, Parlier, CA
- Almond Variety Development, Rootstock Germplasm and Budfailure Studies, Tom Gradziel, UC Davis

- Almond Variety Evaluation, Bruce Lampinen, UC Davis
- Mechanical Hedging Mature Orchards and Mobile Platform to Measure Canopy and Water Stress, Bruce Lampinen, UC Davis
- Wireless Irrigation Network, Mike Delwiche, UC Davis
- Projected Costs and Savings from Precision Water Management, Karen Klonsky, UC Davis
- BMPs for Nitrogen and Ground Water: Optimizing Use of Ground Water N, David Smart, UC Davis
- Remote Sensing Mapping of Almonds, Joel Kimmelshue, Land IQ
- Almond Crop Forecasting Research, Neil Willits, USDA-NASS, Sacramento

### Sustainability and Almonds: Where Are We?

Room 308-313  
3:40-4:40 P.M.

Speakers: Gabriele Ludwig and Tim Birmingham (ABC), Jeff Dlott (SureHarvest, Inc.)

**CCA Units: 0.5 Soil and Water  
Management, 0.5 Nutrient Management  
DPR Units: 1.0 Other**

After several years of developing and implementing the California Almond Sustainability Program (CASP) for almond growers and handlers, it is now time to assess what we have learned about the range of sustainable practices used. The first report on the status of sustainability in California Almonds will be presented. Come learn what the grower self-assessment data tell us about almonds, sustainability and opportunities. In addition, Jeff Dlott of SureHarvest will provide an update on trends in sustainability in the U.S. and international marketplace.

### Field Quality: Stockpile Management and Concealed Damage

Room 308-313  
5:30-6:30 P.M.

Moderator: Bob Curtis (ABC)

Speakers: Bruce Lampinen (UC Davis), Franz Niederholzer (UCCE-Sutter, Yuba, Colusa Counties)

**CCA Units: 1.0 Crop Management**

Quality starts in the field, and maintaining quality continues into and through processing and ultimately to the consumer. This symposium provides tools to ensure field quality, including updated guidelines based on completed studies addressing stockpile management, coping with harvest rains and ongoing ABC-funded research providing new insights on managing concealed damage.

## DAY 2: WEDNESDAY, DECEMBER 4 NUT OF CHOICE OVERVIEW

### Growth by Leveraging Consumer Insights

Room 306-307  
10:35-11:40 A.M.

Moderator: Stacey Humble (ABC)

Speaker: Buddy Ketchner (Sterling-Rice Group)

**CCA Units: 1.0 Professional  
Development**

To motivate increased consumption from a target audience, understanding consumer attitudes is a must for companies in today's marketplace. This symposium will take a deep look at the Almond Board of California's global market research program and how we use information gained to form consumer insights to build strong marketing strategies. We will review the diverse almond consumer and cultural differences in key markets.

### Protecting Our Reputation in a Changing World

Room 306-307  
2:00-3:30 P.M.

Moderator: John Talbot (ABC)

Speaker: Sean Smith (Porter Novelli)

**CCA Units: 1.0 Professional  
Development**

New communications platforms in the past few years have shifted the news cycle from overnight to a matter of minutes. With news traveling quickly around the world and through the court of public opinion, good reputation management has become all the more important and all the more complicated for businesses and organizations.

Social media eliminates borders and makes it much harder to manage communication issues and when anyone with a social media account might be considered a credible source, even small issues can turn into big problems. What is the role of the industry in managing a situation like this? What resources do we have to confront these challenges?

This symposium will address these questions and provide insight into business best practices and suggestions for crisis protocols.

#### SPONSOR PRESENTATION

### Not All Fungicides Are Created Equal: Introducing Merivon® Fungicide for Almonds

Room 308-313

11:40-12:00 P.M.

Moderator: Richard Waycott (ABC)

Speaker: Nick Schweizer (BASF)

BASF introduces Merivon® fungicide for almonds, a next-generation product that delivers longer lasting disease protection at full bloom and throughout the season.



#### ALMOND STAGE PRESENTATIONS

### Enhancing Bee Health

Almond Stage, Hall A + B

10:10-10:30 A.M.

The health of bees and their role as pollinators is important as agriculture continues to increase crop productivity and feed a growing world population. To do this, agriculture depends on biodiversity and thriving pollinators.



### Meter Aggregation: A Game- Changer for Agriculture

Almond Stage, Hall A + B

1:25-1:55 P.M.

Speaker: Rich Borba (JKB Energy)

For nearly a decade, the agriculture industry has fought to allow the combining of multiple electric meters for on-site solar generation. Passage of SB-594 will allow meter aggregation beginning in 2014. Our discussion will teach you how you can profit from this major victory for agriculture! Also we will review new laws and regulations affecting agriculture in 2014.





Specializing in containerized rootstock and finished trees for the commercial grower



**AGROMILLORA CALIFORNIA**

Currently offering Walnut, Almond, Pistachio and Stone Fruit trees in addition to our Olive tree program. Available inventory for 2014/2015 growing seasons.

main office 530-846-0404, [www.agromillora-ca.com](http://www.agromillora-ca.com)

For inquiry or to order please contact Ken Noren  
530-777-8958, [knoren@agromillora-ca.com](mailto:knoren@agromillora-ca.com)




**Key Technology & Visys.**  
**Advancing Together.**

509.529.2161 | [www.key.net](http://www.key.net)

**JKB ENERGY**  
CAPTURING THE POWER OF NATURE

**METER AGGREGATION:  
A GAME-CHANGER FOR AGRICULTURE**

JOIN JKB ENERGY FOR A DISCUSSION ABOUT HOW THE ALMOND INDUSTRY CAN PROFIT FROM NEW LEGISLATION

LOCATED AT  
**THE ALMOND STAGE**  
WEDNESDAY, DEC. 4  
1:25 - 1:55 P.M.



AHPA  
Official Platinum Sponsor



California Citrus Mutual  
Official Gold Sponsor



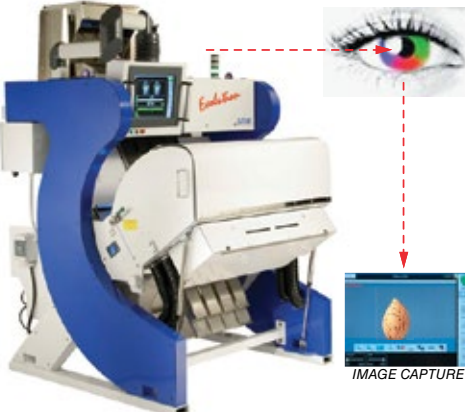
California Almonds  
Official Green Sponsor

941 E Monte Vista Ave  
Turlock, CA 95382  
209.668.5303 [jkbenergy.com](http://jkbenergy.com)

Follow us on Facebook & Twitter!



Creating the Future  
**SATAKE**  
[www.satake-usa.com](http://www.satake-usa.com)



**Optical Sorting to the Highest Standards**  
**EVOLUTION®**

Satake USA, Inc.  
West Coast Operations  
Modesto, California U.S.A  
[jsargent@satake-usa.com](mailto:jsargent@satake-usa.com)

Tel: 209 551 3203  
Fax: 209 551 0841



**DECEMBER 5**  
**DAY 3 : AGENDA + OVERVIEW**



## DAY 3 : THURSDAY, DECEMBER 5 CROP OF CHOICE AGENDA

**7:00 A.M.**  
**REGISTRATION OPENS**  
East Lobby, 3rd Floor

**7:30–8:30 A.M.**  
**Continental Breakfast**  
Hall A + B

**8:00 A.M.**  
**Trade Show Open**  
Hall A + B

**8:30–9:00 A.M.**  
**METAL SPONSOR PRESENTATION**  
*Syngenta*  
**Pests in the Orchard**  
Almond Stage, Hall A + B

**9:05–10:30 A.M.**  
**Honey Bees and Pollination:  
Looking at the Bigger Picture**  
Room 308–313  
Moderator: Christi Heintz  
(Project Apis m.)  
Speakers: Neal Williams (UC Davis),  
Gordon Wardell (Paramount  
Farming Co.)  
**CCA Units: 1.0 Crop Management**  
**DPR Units: 0.5 Laws and**  
**Regulations, 0.5 Other**

**10:30–11:45 A.M.**  
**Pest Management Update:  
Insect, Disease and Weeds**  
Room 308–313  
Moderator: Bob Curtis (ABC)  
Speakers: David Haviland (UCCE-  
Kern County), Brad Hanson (UC Davis),  
Themis Michailides (UC Davis  
at Kearney Agricultural Center),  
Jim Adaskaveg (UC Riverside)  
**CCA Units: 1.0 Integrated**  
**Pest Management**  
**DPR Units: 0.5 Laws and**  
**Regulations, 1.0 Other**

**10:30–12:00 P.M.**  
**Dedicated Trade Show Time**  
Hall A + B

**12:00–1:20 P.M.**  
Lunch Breakout Workshops  
Box lunches will be provided  
(in the East Lobby, 3rd Floor)  
*Sponsored by Farm Credit Alliance*

**WORKSHOP 1**  
**Nitrogen Management  
and Budgeting**

Room 308–313  
Moderator: Gabriele Ludwig (ABC)  
Speakers: Patrick Brown (UC Davis),  
Sebastian Saa Silva (UC Davis)  
**CCA Units: 0.5 Nutrient Management**  
**DPR Units: 0.5 Other**

**WORKSHOP 2**  
**Economic Update: Financial  
Modeling Workshop**  
Hall C  
Moderator: Richard Waycott (ABC)  
**CCA Units: 1.25 Professional**  
**Development**

**WORKSHOP 3**  
**Irrigation Strategies for  
Drought Management**  
Room 306–307  
Moderator: Bob Curtis (ABC)  
Speakers: Ken Shackel (UC Davis),  
David Doll (UCCE-Merced County),  
Allan Fulton (UCCE-Tehama County),  
Blake Sanden (UCCE-Kern County),  
Bruce Lampinen (UC Davis)  
**CCA Units: 0.5 Soil and**  
**Water Management**  
**DPR Units: 0.5 Other**

**WORKSHOP 4**  
**EU Pre-Export Checks:  
Moving Beyond VASP**  
Room 314  
Moderator: Caroline Stringer (ABC)

**1:30–2:00 P.M.**  
**ALMOND LEADERSHIP PROGRAM**  
*Special Projects*  
Almond Stage, Hall A + B  
Moderator: Kendall Barton (ABC)  
**CCA Units: 0.5 Professional**  
**Development**

**1:45–2:50 P.M.**  
**Research Updates: Speed Dating**  
Room 308–313  
Moderator: Gabriele Ludwig (ABC)

**3:00–4:30 P.M.**  
**Research Poster Session**  
Hall A + B  
Featured Topics: Insect and Mite,  
Disease, and Weed Management;  
Pollination and Honey Bee Health;  
Almond Quality and Food Safety/  
Nutrition; Almond Leadership Program  
**CCA Units: 0.5 Other**

**3:00–4:30 P.M.**  
**Dedicated Trade Show Time**  
Hall A + B

**5:00–6:00 P.M.**  
**Free Hour**

**6:00 P.M.**  
**Gala Dinner**  
Hall C  
Moderator: Richard Waycott (ABC)  
Entertainers: Juston McKinney,  
Mark Eddie, Tom Cotter

*Schedule and Continuing Education  
Credits subject to change.*



## DAY 3 : THURSDAY, DECEMBER 5 NUT OF CHOICE AGENDA

**7:00 A.M.**  
**REGISTRATION OPENS**  
East Lobby, 3rd Floor

**7:30–8:30 A.M.**  
**Continental Breakfast**  
Hall A + B

**8:00 A.M.**  
**Trade Show Open**  
Hall A + B

**8:30–9:00 A.M.**  
**METAL SPONSOR PRESENTATION**  
*Syngenta*  
**Pests in the Orchard**  
Almond Stage, Hall A + B

**10:30–12:00 P.M.**  
**Dedicated Trade Show Time**  
Hall A + B



**12:00–1:20 P.M.**  
Lunch Breakout Workshops  
Box lunches will be provided  
(in the East Lobby, 3rd Floor)  
*Sponsored by Farm Credit Alliance*

**WORKSHOP 1**  
**Nitrogen Management  
and Budgeting**

Room 308–313  
Moderator: Gabriele Ludwig (ABC)  
Speakers: Patrick Brown (UC Davis),  
Sebastian Saa Silva (UC Davis)  
**CCA Units: 0.5 Nutrient Management**  
**DPR Units: 0.5 Other**

**WORKSHOP 2**  
**Economic Update: Financial  
Modeling Workshop**  
Hall C  
Moderator: Richard Waycott (ABC)  
**CCA Units: 1.25 Professional**  
**Development**

**WORKSHOP 3**  
**Irrigation Strategies for  
Drought Management**  
Room 306–307  
Moderator: Bob Curtis (ABC)  
Speakers: Ken Shackel (UC Davis),  
David Doll (UCCE-Merced County),  
Allan Fulton (UCCE-Tehama County),  
Blake Sanden (UCCE-Kern County),  
Bruce Lampinen (UC Davis)  
**CCA Units: 0.5 Soil and**  
**Water Management**  
**DPR Units: 0.5 Other**

**WORKSHOP 4**  
**EU Pre-Export Checks:  
Moving Beyond VASP**  
Room 314  
Moderator: Caroline Stringer (ABC)

**1:30–2:00 P.M.**  
**ALMOND LEADERSHIP PROGRAM**  
*Special Projects*  
Almond Stage, Hall A + B  
Moderator: Kendall Barton (ABC)  
**CCA Units: 0.5 Professional**  
**Development**

**1:45–2:50 P.M.**  
**Almonds and Chocolate:  
The Dynamic Duo**  
Room 306–307  
Moderator: Karen Lapsley (ABC)  
Speakers: Karen Lapsley and  
Peggy Fyffe (ABC)

**3:00–4:30 P.M.**  
**Dedicated Trade Show Time**  
Hall A + B

**3:30–5:00 P.M.**  
**Volatiles or Sensory: Which Is Better  
for Shelf-Life Measurements?**  
Room 306–307  
Moderator: Guangwei Huang (ABC)  
Speakers: Alyson Mitchell (UC Davis),  
Hildegard Heymann (UC Davis),  
Ron Pegg (University of Georgia)  
**CCA Units: 0.75 Professional**  
**Development**

**5:00–6:00 P.M.**  
**Free Hour**

**6:00 P.M.**  
**Gala Dinner**  
Hall C  
Moderator: Richard Waycott (ABC)  
Entertainers: Juston McKinney,  
Mark Eddie, Tom Cotter

*Schedule and Continuing Education  
Credits subject to change.*

Come visit the almond industry trade show in Hall A + B, 8:00 a.m.–5:00 p.m.

Be sure to visit the Almond Board booth #623 to learn more about the California  
Almond Sustainability Program and Almond Leadership Program.





## DAY 3: THURSDAY, DECEMBER 5 CROP OF CHOICE OVERVIEW

### Honey Bees and Pollination: Looking at the Bigger Picture

Room 308–313

9:05–10:30 A.M.

Moderator: Christi Heintz (Project Apis m.)  
Speakers: Neal Williams (UC Davis),  
Gordon Wardell (Paramount Farming Co.)

**CCA Units: 1.0 Crop Management**

**DPR Units: 0.5 Laws and  
Regulations, 0.5 Other**

Saving the bees has become a media darling, especially in the last year. Almonds are frequently mentioned due to their need for bees; so questions about how almond growers are contributing to bee health need to be addressed. This symposium takes a comprehensive look at pollination and honey bees from these perspectives, including the factors impacting honey bee health and honey bee supply, as well as where almond growers can contribute to ensuring bee health, such as grower best management practices, bee contracting, hive inspection, planting honey bee forage crops and a solid partnership with beekeepers.

### Pest Management Update: Insect, Disease and Weeds

Room 308–313

10:30–11:45 A.M.

Moderator: Bob Curtis (ABC)

Speakers: David Haviland (UCCE-Kern County), Brad Hanson (UC Davis), Themis Michailides (UC Davis at Kearney Agricultural Center), Jim Adaskaveg (UC Riverside)

**CCA Units: 1.0 Integrated  
Pest Management**

**DPR Units: 0.5 Laws and  
Regulations, 1.0 Other**

New management tactics and materials keep growers and their PCAs busy trying to keep up with shifting pest spectrums, changes in pest resistance/tolerance and regulations. This session will provide an update on what is new in the areas of almond pest management, including weeds, insects and diseases.



### Research Updates: Speed Dating

Room 308–313

1:45–2:50 P.M.

Moderator: Gabriele Ludwig (ABC)

**Continuing Education Credits (CCA and  
DPR) will be finalized at the event.**

For more than 40 years, Almond Board of California's (ABC's) research programs have advanced yield, quality and environmental stewardship, contributing to the growth and success of the industry. Almond Board-funded researchers have helped to identify areas of opportunity and success through all parts of the growing lifecycle. Be sure to attend this Speed Dating format of six-minute updates by researchers, offering insight into a number of ongoing projects. Researchers will also be available at poster sessions during the social hour following their presentations, giving conference attendees a chance to ask follow-up questions.

#### Speakers and Research Topics:

- Detoxification of Insecticides by Insects, May Berenbaum, University of Illinois, Champagne-Urbana
- Navel Orangeworm Flight Behavior, Chuck Burks, USDA-ARS, Parlier, CA
- Navel Orangeworm Insecticide Control and Coverage, Joel Siegel, USDA-ARS, Parlier, CA
- Improving Spray Deposition and Reducing Drift, Ken Giles, UC Davis
- *Armillaria* Resistant Rootstocks, Kendra Baumgartner, UC Davis
- Fungicide Impact on Honey Bee Development, Louisa Hooven, Oregon State University
- Fungicide Impact on Pollen Tube Germination and Growth, Neal Williams, UC Davis
- Interactions of Fungicides and Insecticides on Honey Bees, Gordon Wardell, Project Apis m. on behalf of Reed Johnson, Ohio State University
- Importation and Preservation of Honey Bee Germplasm for Breeding and Stock Improvement, Steve Sheppard, Washington State University
- Honey Bee Nutrition: Protein Supplements vs. Natural Forage, Gloria DeGrandi Hoffman, USDA-ARS, Tucson, AZ
- Varroa Treatments: Efficacy and Economic Impact, Fabiana Ahumada, AgScience Consulting, Tucson, AZ
- Enhancing Tech Transfer Team Program for Commercial Beekeeping Industry, Megan Mahoney, Tech Transfer Team on behalf of Marla Spivak/Katie Lee, University of Minnesota

## DAY 3: THURSDAY, DECEMBER 5 NUT OF CHOICE OVERVIEW

### Almonds and Chocolate: The Dynamic Duo

Room 306–307

1:45–2:50 P.M.

Moderator: Karen Lapsley (ABC)

Speakers: Karen Lapsley and  
Peggy Fyffe (ABC)

When it comes to chocolate, consumers want the perfect combination of flavor, nutrition, indulgence and crunch. Our speakers will reveal new global consumer data, food industry trends and share nutrition insights that deliver how almonds are a perfect match for chocolate.

### Volatiles or Sensory: Which Is Better for Shelf-Life Measurements?

Room 306–307

3:30–5:00 P.M.

Moderator: Guangwei Huang (ABC)

Speakers: Alyson Mitchell (UC Davis),  
Hildegard Heymann (UC Davis),  
Ron Pegg (University of Georgia)

**CCA Units: 0.75 Professional  
Development**

Fresh volatiles or rancid notes are indicative of almond age and quality. New research from UC Davis builds knowledge on rancidity development and a simple tool for sensory evaluation. Learn how sensory descriptors deliver a language consumer panels can use to provide their sensory preference for almond quality. The research update from University of Georgia will show how sensory and chemical testing is done for almond shelf-life evaluation.

#### ALMOND STAGE PRESENTATIONS

### Pests in the Orchard

Almond Stage, Hall A + B

8:30–9:00 A.M.

Syngenta will discuss the most troublesome pests plaguing the almond industry. Topics will include mites, Navel Orangeworm, major and emerging diseases, as well as resistance management.



### ALMOND LEADERSHIP PROGRAM: SPECIAL PROJECTS

Almond Stage, Hall A + B

1:30–2:00 P.M.

Moderator: Kendall Barton (ABC)

Participants in the 2013 Almond Leadership Program have spent the past few months working on special projects as part of the Program. From effects of the Food Safety Modernization Act on growers to the effectiveness of Navel Orangeworm pheromone traps to a lesson plan for third grade teachers meant to incorporate almond facts into their curriculum, these participants have worked for months on creating forward-thinking projects designed to benefit the California Almond industry. Be sure to show your support for these young leaders by visiting the Almond Stage to listen to the top special projects presented by tomorrow's industry leaders.

## DAY 3: THURSDAY, DECEMBER 5 OVERVIEW

#### LUNCH BREAKOUT WORKSHOPS

##### WORKSHOP 1

### Nitrogen Management and Budgeting

Room 308–313

12:00–1:20 P.M.

Moderator: Gabriele Ludwig (ABC)

Speakers: Patrick Brown (UC Davis),  
Sebastian Saa Silva (UC Davis)

**CCA Units: 0.5 Nutrient Management  
DPR Units: 0.5 Other**

The new in-season nitrogen budget model is a "win" on all counts: improved yields, reduced input costs, and less potential for offsite movement into ground and surface water. This workshop will cover how to implement this updated in-season nutrient budget model based on information from recent Almond Board and USDA-funded research. It is also an opportunity to learn about some of the requirements of the Irrigated Lands Regulatory Program.

##### WORKSHOP 2

### Economic Update: Financial Modeling Workshop

Hall C

12:00–1:20 P.M.

Moderator: Richard Waycott (ABC)

**CCA Units: 1.25 Professional Development**

The economics of our industry can change drastically from one year to the next, and growers must be prepared for the unpredictable. The economic well-being of almond growers depends

on favorable financial conditions over the long term. This workshop will explore several financial models that illustrate the almond industry economic story, while demonstrating the vital importance of keeping grower returns at desirable levels.

##### WORKSHOP 3

### Irrigation Strategies for Drought Management

Room 306–307

12:00–1:20 P.M.

Moderator: Bob Curtis (ABC)

Speakers: Ken Shackel (UC Davis),  
David Doll (UCCE-Merced County),  
Allan Fulton (UCCE-Tehama County),  
Blake Sanden (UCCE-Kern County),  
Bruce Lampinen (UC Davis)

**CCA Units: 0.5 Soil and Water Management**

**DPR Units: 0.5 Other**

Tightening water supplies are a critical issue for many growers. Even for those who have sufficient water, effective irrigation management is key to long-term orchard productivity and health. This workshop will include new information on best season-long strategies under different water availability scenarios and is an opportunity for all, regardless of water supply, to fine-tune irrigation practices.

##### WORKSHOP 4

### EU Pre-Export Checks: Moving Beyond VASP

Room 314

12:00–1:20 P.M.

Moderator: Caroline Stringer (ABC)

Back in 2007 when mandatory import controls of almonds were adopted in Europe, the almond industry moved ahead with a voluntary program that generated 100% participation. Six years later, not only have the mandatory controls been lifted, but the California Almond industry is poised to be only the third crop recognized by the European Commission for pre-export certification. How the new program leverages previous VASP procedures will be discussed during this lunch workshop.

## GALA DINNER

Hall C

**DOORS OPEN AT 6:00 P.M.**

Program begins at 6:30 p.m.

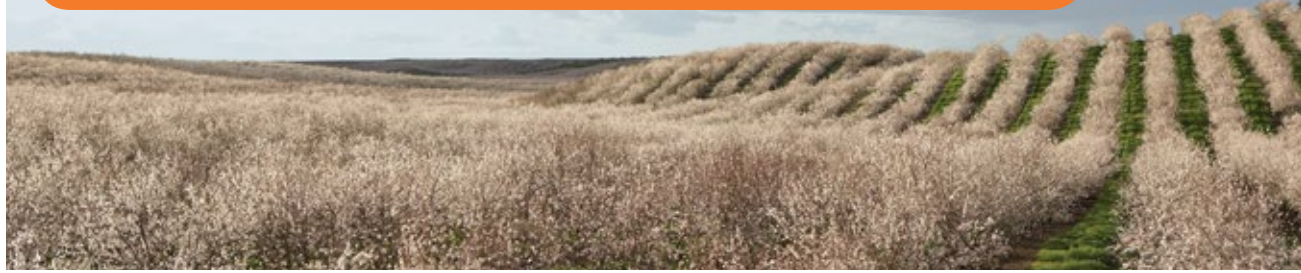
Moderator: Richard Waycott (ABC)

Entertainers: Juston McKinney,  
Mark Eddie, Tom Cotter

Join us for a night full of side-splitting laughter and smiles as three top-notch comedians entertain almond professionals.



CALIFORNIA ALMOND LEADERSHIP PROGRAM  
GROWING YOUR FUTURE  
VISIT THE ALMOND BOARD BOOTH TO APPLY



CALIFORNIA ALMOND SUSTAINABILITY PROGRAM  
SHARE YOUR STORY  
VISIT THE ALMOND BOARD BOOTH TO LEARN MORE



## Polaris Ranger® Giveaway at The Almond Conference

Almond growers, take note: The Almond Board has gone above and beyond and teamed up with Polaris to give away a Ranger® 400 UTV during The Almond Conference. Picture yourself cruising through your orchards in a new UTV from Polaris. All registered growers who attend The Almond Conference will be eligible for a chance to win a Ranger 400 UTV.

Go to [polaris.com](http://polaris.com) to learn more about the Ranger 400 and their full line of UTVs.



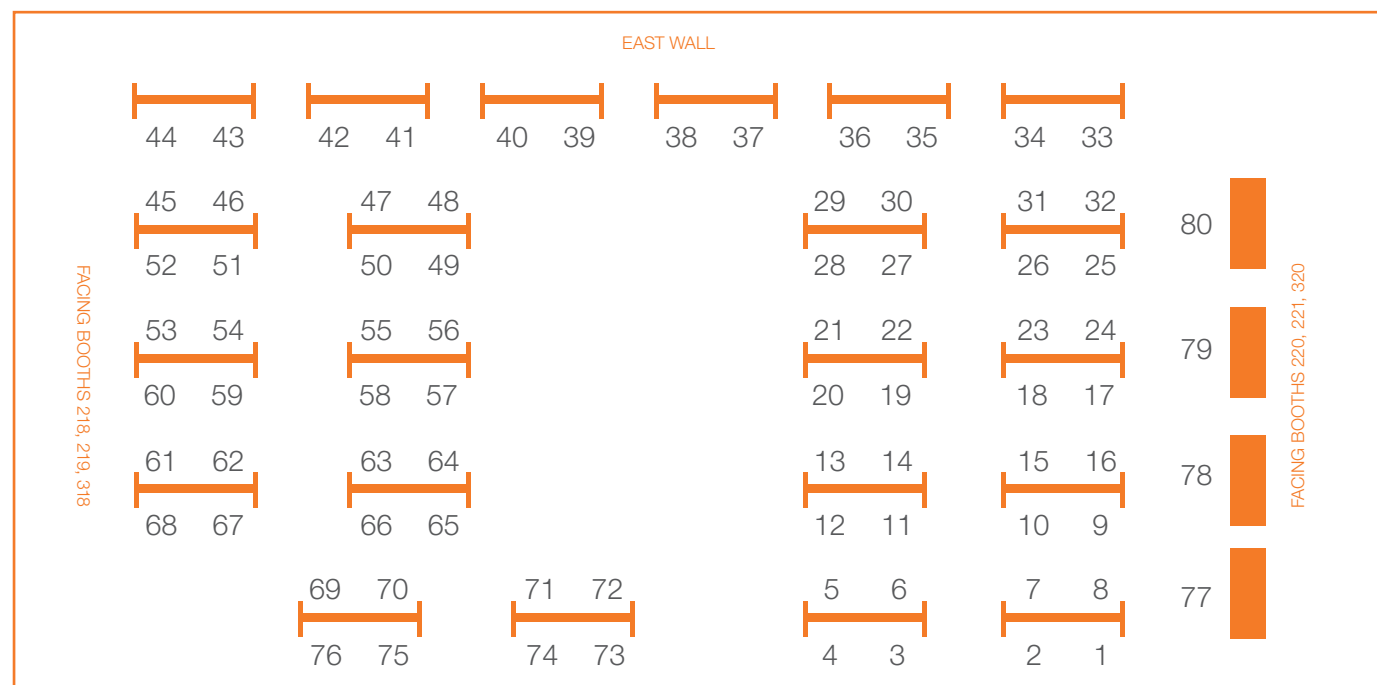
Ranger is a registered trademark of Polaris Industries Inc.

# MAP POSTER SESSIONS





# MAP POSTER SESSIONS



- 1** Reed Johnson, OSU/Gordon Wardell, Project Apis m. *Impact of Fungicides and Insecticides on Queen Larval Development*
- 2** 13-POLL12-Hooven *Fungicide Impact on Honey Bee Development*
- 3** 13-POLL5-Spivak *Tech Transfer Teams for Commercial Beekeeping*
- 4** 13-POLL7-Sheppard/Cobey *Honey Bee Gemplasm*
- 5** 13-POLL9-Ahumada *Varroa Treatments*
- 6** 13-POLL1-Gloria DeGrandi Hoffman *Pollen Supplements vs. Natural Forage*
- 7** Neal Williams, UCD *Forage and Integrated Almond Pollination*
- 8** 13-POLL3-Williams *Fungicide Impact on Pollen Tube Germination and Growth*
- 9** 13-POLL6-Allan *Blue Orchard Bee Dispersal*
- 10** 13-ENTO1-Berenbaum *Detoxification of Insecticides by Navel Orangeworm*
- 11** Brad Higbee, Paramount Farming *Insect and Mite Pest Management*

- 12** 13-ENTO6-Haviland *Insect and Mite Pest Management*
- 13** 13-ENTO2-Burks *Navel Orangeworm Flight Behavior*
- 14** 13-ENTO8-Joyce *Leaffooted and Stink Bugs in Almonds*
- 15** 13-ENTO11-Siegel/Walse *Navel Orangeworm Control and Coverage*
- 16** 13-WATER3-Giles/Markle *Improving Spray Deposition and Reducing Drift*
- 17** 13-ENTO3-AI-Khatib *UC IPM Pest Management Guidelines*
- 18** 13-WATER1-Stoltz *Calibration of Aerial Applications*
- 19** 13-ENTO9-Cardé *Navel Orangeworm Monitoring Attractants*
- 20** 13-HORT3-Duncan/Holtz *Farm Advisor Project: NOW Insecticides*
- 21** 13-HORT12-Hanson *Weed Management*
- 22** 13-AFLA1-Michailides *Biocontrol of Aflatoxin*
- 23** Themis Michailides/David Doll *Managing Wood Canker Diseases*

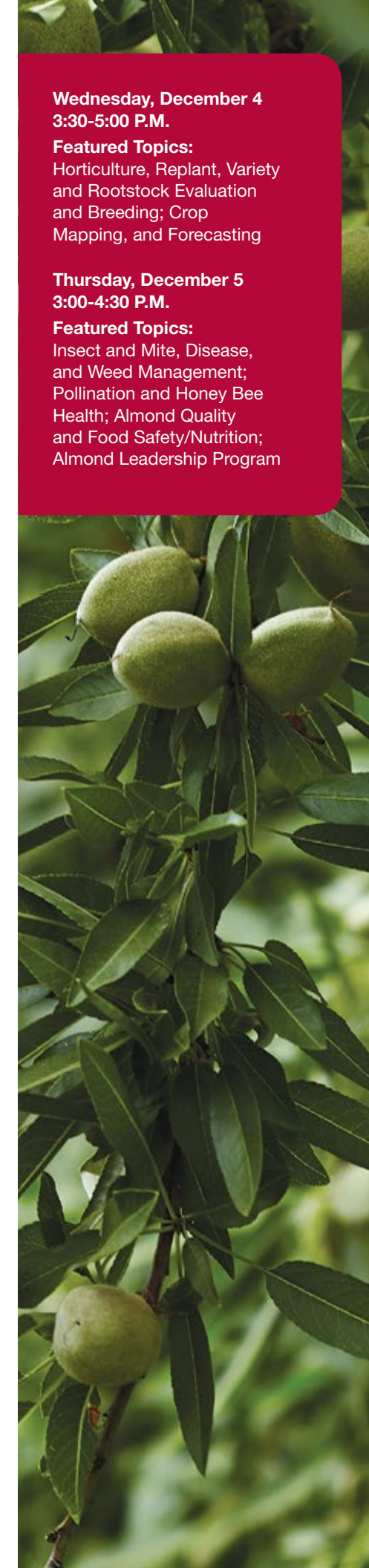
- 24** 13-PATH4-Adaskaveg *Almond Disease Management*
- 25** 13-PATH3-Adaskaveg *Alternaria Leaf Spot*
- 26** 13-HORT14-Niederholzer *Concealed Damage Field Studies*
- 27** Alyson Mitchell *Harvest Moisture and Almond Quality*
- 28** Alyson Mitchell *Almond Flavor Volatiles*
- 29** Gordon Davidson/Linda Harris, et al. *Sources and Transfer of Salmonella in Almond Production*
- 30** Christopher Theofel/Linda Harris *Impact of Storage on Thermal Inactivation of the Surrogate Enterococcus faecium*
- 31** Ron Pegg *Shelf Life of Pasteurized Raw and Roasted Almonds*
- 32** Shirin Abd/Carrie Ferstl *Surrogate Validation Procedure*
- 33** Jerry Magdaleno *Almond Market Potential in Mexico*
- 34** Andrew Ray/Bob Mahoney *NOW Pheromone Lure vs. Egg Traps*
- 35** Bobby McCuan *Continuous Improvement Efforts for Foreign Material*

- 36** Wesley Henderson *Almond Harvest Safety Video*
- 37** Kristen Lane *Bee Incentive Programs*
- 38** Samantha Perez *California Almonds: How Much Is Too Much?*
- 39** Jennifer Dickey/Laceyane Sullivan *Third Grade Almond Curriculum*
- 40** Daniel Bays *Complying with FSMA for Almond Harvest*
- 41** Kevin Brooks *The Role of a Certified Crop Advisor in Almond Production*
- 42** Eric Genzoli *Late Planting – Painted vs. Non-painted Trees*
- 43** Terrik Watt *Market Research of Almonds in Indonesia*
- 44** Nathan Lewis *Getting the Word Out to PCAs*
- 45** Mike Delwiche/Karen Klonsky, UCD *Wireless Sensor Networks for Precision Irrigation*
- 46** Shrini Upadhyaya, UCD *Sensor Technologies for Irrigation Management*
- 47** 13-HORT13-Lampinen *Mobile Platform Measuring Canopy Light and Water Stress*
- 48** 13-HORT19-Lampinen *Mechanical Hedging*
- 49** 13-PREC2-Brown *Fertilizer Management and Nutrient Budgeting*
- 50** 13-PREC5-Brown *Dynamics of Root Growth*
- 51** 13-HORT11A-Sanden *Orchard Longevity Under Differential N and Irrigation*
- 52** 13-HORT17-Shackel *Almond ET/Yield Production Function*
- 53** 13-AIR2-Smart *N<sub>2</sub>O Emissions from Almonds*
- 54** 13-PREC6-Smart *N Management for Nitrate Minimization*
- 55** 13-PREC4-Hopmans *Water and N Uptake Model*
- 56** 13-HORT3-Duncan/Doll *Farm Advisor Project: N Management in Young Orchards*
- 57** 13-AIR9-Doll *Soil Fumigation and Alternatives*

- 58** 13-AIR5-Gao/Doll *TIF Tarps for Soil Fumigation*
- 59** 13-HORT18-Niederholzer *Soil pH Effects*
- 60** 13-HORT3-Duncan/Niederholzer *Farm Advisor Project: Foliar N & K Sprays*
- 61** 13-HORT6-Niederholzer *Nickels Soil Lab Projects: Organic Production and Minimum Pruning*
- 62** 13-PREC1-DeJong *Tree Growth Model*
- 63** 13-HORT3-Duncan/Brar *Farm Advisor Project: Fresno/Madera Field Survey*
- 64** 13-PATH1-Browne *Replant Disease Strategies*
- 65** 12-PATH7-Baumgartner *Armillaria Resistant Rootstocks*
- 66** 12-HORT16-Aradhya/Ledbetter *Rootstock Improvement and Genomic Tools*
- 67** 13-HORT4-Duncan *Rootstock Evaluation*
- 68** 13-HORT5-Duncan *Tree Spacing, Pruning and Rootstocks*
- 69** 13-HORT7-Gradziel *Diagnostic Marker Budfailure*
- 70** 13-HORT10-Gradziel *Rootstock Germplasm*
- 71** 13-HORT1-Gradziel *Variety Development*
- 72** 13-HORT2-Lampinen *Variety Evaluation*
- 73** 13-ABCBOD1-Wang/Willits/Tolomeo *Almond Crop Forecasting Research*
- 74** 13-STEW CROP1-Looker *Environmental Stewardship Campaign*
- 75** 13-STEW CROP3-SureHarvest *California Almond Sustainability Program*
- 76** Almond Board of California
- 77** Project Apis m.
- 78** CA State Beekeepers Association
- 79** CA Dept. Pesticide Regulation
- 80** UC Agriculture and Natural Resources

**Wednesday, December 4  
3:30-5:00 P.M.**  
**Featured Topics:**  
Horticulture, Replant, Variety and Rootstock Evaluation and Breeding; Crop Mapping, and Forecasting

**Thursday, December 5  
3:00-4:30 P.M.**  
**Featured Topics:**  
Insect and Mite, Disease, and Weed Management; Pollination and Honey Bee Health; Almond Quality and Food Safety/Nutrition; Almond Leadership Program







# Driving Farming's Future



**Grow with Brandt.co**  
The proud sponsor of the #31 Chevrolet driven by NASCAR Nationwide Series championship contender, Justin Allgaier.

For 60 years, BRANDT has been helping growers maximize quality, yield and ROI with cutting-edge crop input solutions. Today, we are a world class team of agronomists, chemists, formulators, plant pathologists and pest control advisors.

BRANDT's expansive product portfolio includes:

- Over 50 OMRI listed crop protection and organic nutrition products
- One of the largest lines of micronutrients available, including best-in class nutrient formulations for foliar, soil and irrigation systems
- A wide range of adjuvant chemistries

To learn more about BRANDT's proprietary chemistries, watch the product videos at: [www.BRANDT.co/productvideos](http://www.BRANDT.co/productvideos)

Brandt Consolidated, Inc.  
3654 South Willow Avenue  
Fresno, California 93725 USA  
[www.brandt.co](http://www.brandt.co)  
559 499 2100



# TRADE SHOW MAP + COMPANY DESCRIPTIONS



Join us at  
**Cafeteria 15L**  
Wednesday, December 4, 2013  
at 6:00 p.m.  
(15th and L Street)

## Almond Trees

Uniform Growth, Higher Production,  
Proven Performance

- Brights Hybrid® Clone 5 (BH5)\*
- Brights Hybrid® BB106\*
- Controller® 9.5, 7, 8
- Hansen 536
- Lovell
- Kyrmsk® 86\*
- Nemagaurd Clonal

**DUARTE**  
TREES & VINES

[f](#) Find us on Facebook

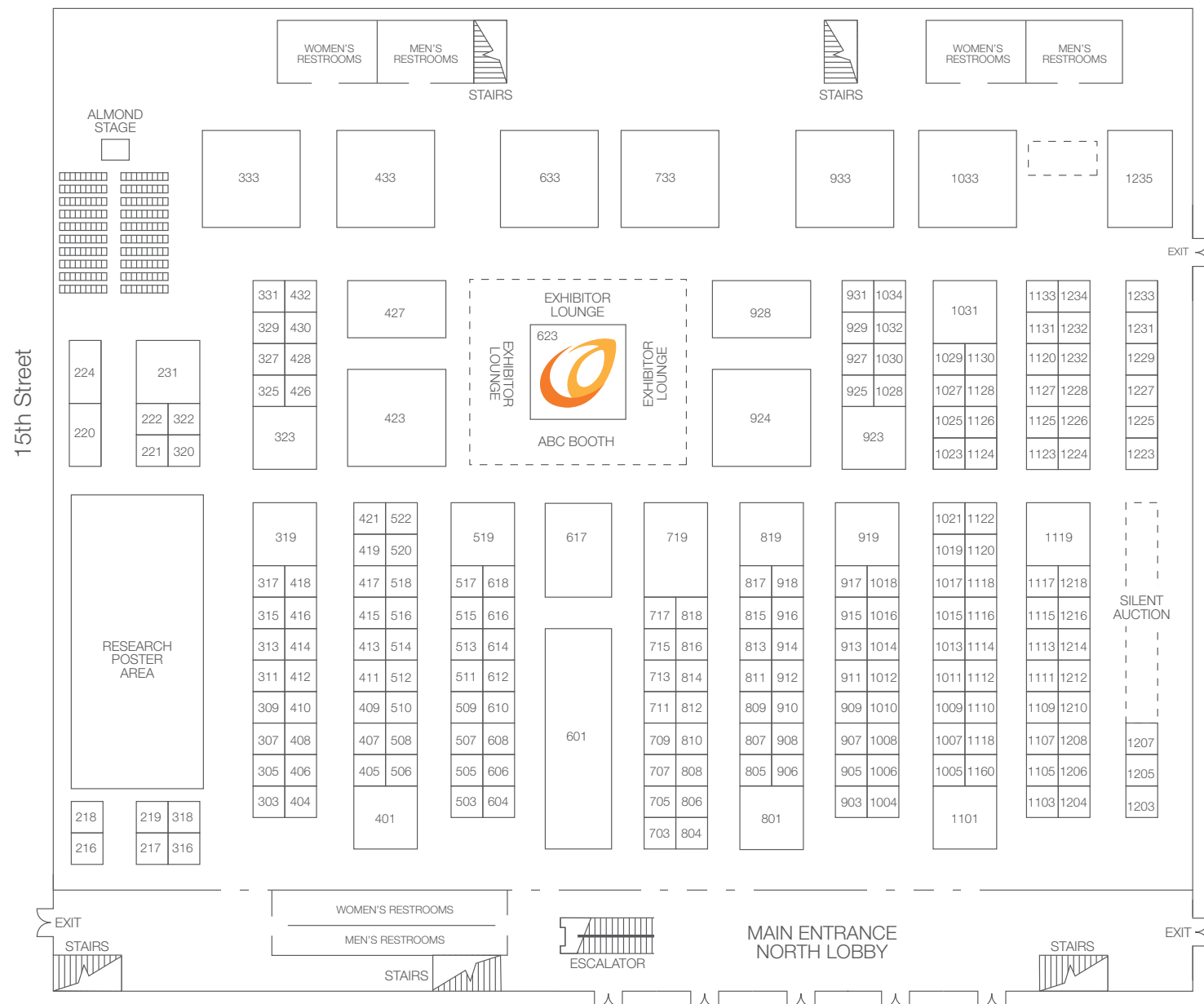
**1-800-GRAFTED**

[sales@duartenursery.com](mailto:sales@duartenursery.com)  
[www.duartenursery.com](http://www.duartenursery.com) • Hughson, CA.

\* P2G exclusive



# MAP TRADE SHOW



Please note that the actual layout of the exhibit hall may change depending on the equipment and products being showcased.

## THANK YOU TO ALL OUR SPONSORS

- |                  |                      |                      |                      |
|------------------|----------------------|----------------------|----------------------|
| Agromillora-Ca   | Duarte Nursery       | JKB Energy           | Syngenta             |
| BASF             | Farm Credit Alliance | Key Technology, Inc. | Tomra                |
| Borrell USA Corp | Harris Woolf         | M. Parise Associates | Wellmark             |
| Brandt           | Helena Chemical      | Satake               | Yosemite Farm Credit |
| Compass Minerals |                      |                      |                      |

# BOOTHS+ EXHIBITORS

- |   |  |  |  |
|---|--|--|--|
| <b>217</b> Caltec Ag, Inc.  | <b>519</b> Key Technology, Inc.                  | <b>913</b> Napolol   | <b>1110</b> Magnation Water and Energy Saving Technologies |
| <b>219</b> Food Safety Net Services                                 | <b>520</b> Air-O-Fan Products Corp.              | <b>914</b> Fruit Growers Laboratory, Inc.                            | <b>1111</b> Rain Bird                                      |
| <b>220</b> Sierra Gold Nurseries                                    | <b>522</b> KCI-Kingsburg Cultivator, Inc.        | <b>915</b> Delta Technology Corporation                              | <b>1112</b> Tetra Technologies                             |
| <b>221</b> Polymer Ag, Inc.   | <b>601</b> JackRabbit                            | <b>916</b> Cenergy Power   | <b>1113</b> Acadian Seaplants Limited                      |
| <b>231</b> The Nursery Company                                      | <b>604</b> PBM Supply & Mfg., Inc.               | <b>917</b> Deerpoint Group, Inc.                                     | <b>1114</b> Agworld  |
| <b>303</b> Fowler Nurseries, Inc.                                   | <b>606</b> Mana Crop Protection                  | <b>918</b> Stanislaus Implement & Hardware                           | <b>1114</b> Ranch Systems                                  |
| <b>305</b> Diamond K Gypsum, Inc.                                   | <b>610</b> Fly Away Pest Control, Inc.           | <b>919</b> Wells Fargo Insurance                                     | <b>1115</b> Ag Soil Works                                  |
| <b>307</b> Hortau, Inc.   | <b>612</b> Nutrient Technologies                 | <b>923</b> Agro-Culture Liquid Fertilizers                           | <b>1116</b> QualiTech, Inc.                                |
| <b>309</b> Baicor, LLC  | <b>614</b> Select Harvest USA                    | <b>924</b> Syngenta  | <b>1117</b> Agromillora-Ca                                 |
| <b>311</b> VICAM, A Waters Business                                 | <b>616</b> Redox Chemicals, LLC                  | <b>925</b> Helena Chemical Company                                   | <b>1118</b> Crop Production Services & Precision Agri Labs |
| <b>313</b> Dow AgroSciences   | <b>617</b> BASF                                  | <b>927</b> Helena Chemical Company                                   | <b>1119</b> Farm Credit Alliance                           |
| <b>315</b> Dow AgroSciences   | <b>618</b> Green Tree Nursery                    | <b>928</b> JKB Energy  | <b>1120</b> Crop Production Services & Precision Agri Labs |
| <b>316</b> CVSag  | <b>623</b> Almond Board of California            | <b>929</b> Kamper Fabrication  | <b>1122</b> Tetra Technologies                             |
| <b>317</b> Certis USA   | <b>633</b> Orchard Machinery Corporation         | <b>931</b> Log5/Koco   | <b>1123</b> Jain Irrigation                                |
| <b>318</b> Rears Manufacturing                                      | <b>703</b> CalWest Rain                          | <b>933</b> RF Biocidics  | <b>1124</b> CPM Wolverine Proctor, LLC                     |
| <b>319</b> Beeler Industries  | <b>705</b> Grimbleby-Coleman CPAs, Inc.          | <b>1001</b> Exact Harvesting   | <b>1125</b> OnFarm Systems                                 |
| <b>320</b> Bubco, Inc.  | <b>707</b> Harmon Systems Intl., LLC             | <b>1004</b> Agra Services  | <b>1126</b> NATPROCESS                                     |
| <b>322</b> BioMérieux   | <b>709</b> Compass Minerals                      | <b>1005</b> Verdegaal Brothers, Inc.                                 | <b>1127</b> Pattyn North America, LLC                      |
| <b>323</b> P2G, Progressive Genetics Group                          | <b>711</b> Agri-Valley Irrigation, Inc.          | <b>1006</b> Core Agri, LLC   | <b>1129</b> Pattyn North America, LLC                      |
| <b>325</b> Schuil & Associates, Inc.                                | <b>713</b> Valley Tool & Mfg Co, Inc.            | <b>1007</b> Lionudakis   | <b>1130</b> Irrigate.Net                                   |
| <b>327</b> Sunburst Plant Disease Clinic                            | <b>715</b> Wellmark                              | <b>1008</b> SureHarvest  | <b>1131</b> JenJil Packaging, Inc.                         |
| <b>329</b> Horizon Nut, LLC   | <b>717</b> Weiss McNair, LLC                     | <b>1009</b> Blue Mountain Minerals                                   | <b>1133</b> Klippenstein Corporation                       |
| <b>333</b> Bühler Group   | <b>719</b> Satake                                | <b>1010</b> SureHarvest  | <b>1203</b> ActionPac Scales & Automation                  |
| <b>401</b> Baghouse & Industrial Sheet Metal Services, Inc.         | <b>733</b> Vogel Sales Engineering               | <b>1011</b> Sierra Valley Almonds                                    | <b>1204</b> Roberts Retirement Group                       |
| <b>404</b> Dynamic Coating, Inc.                                    | <b>801</b> Mid-Pacific Industries, Inc.          | <b>1013</b> Ambassador Energy  | <b>1205</b> ActionPac Scales & Automation                  |
| <b>405</b> Hilltop Ranch, Inc.                                      | <b>804</b> IEH Laboratories and Consulting Group | <b>1014</b> Processes Unlimited International, Inc.                  | <b>1207</b> Western Farm Press                             |
| <b>406</b> Cablevey Conveyors                                       | <b>805</b> Sterilization and Fumigation Services | <b>1015</b> Ambassador Energy  | <b>1214</b> FBSciences, Inc.                               |
| <b>408</b> Cablevey Conveyors                                       | <b>806</b> Western Fruit Growers Industries      | <b>1016</b> FMC Corporation  | <b>1216</b> GrassWorks Weed Wiper                          |
| <b>414</b> Plant Food Systems, Inc.                                 | <b>807</b> International Wood Industries         | <b>1017</b> Triple/S Dynamics  | <b>1223</b> Flexicon Corporation                           |
| <b>418</b> Span Construction and Engineering, Inc.                  | <b>808</b> Agrimar Corporation                   | <b>1018</b> Wilkey Industries  | <b>1224</b> Recology                                       |
| <b>419</b> Actagro  | <b>809</b> P&F Metals                            | <b>1019</b> San Joaquin Systems                                      | <b>1225</b> Flexicon Corporation                           |
| <b>421</b> Pacific Western Container                                | <b>810</b> Marrone Bio Innovations               | <b>1021</b> Yara North America, Inc.                                 | <b>1233</b> Gearmore, Inc.                                 |
| <b>423</b> Borrell USA Corp.  | <b>811</b> A&L Western Agricultural Laboratories | <b>1023</b> Donaldson Company  | <b>1234</b> Eurodrup USA                                   |
| <b>426</b> Dave Wilson Nursery                                      | <b>812</b> California Mill Equipment             | <b>1025</b> BioFlora   | <b>1235</b> John Deere                                     |
| <b>427</b> Tomra  | <b>813</b> Agrium Advanced Technologies          | <b>1027</b> Turkhan Foods  | <b>Research Poster Area</b>                                |
| <b>428</b> Dave Wilson Nursery                                      | <b>814</b> Erick Nielsen Enterprises             | <b>1028</b> Western Growers Insurance Services                       | <b>77</b> Project Apis m.                                  |
| <b>430</b> DFA of California  | <b>815</b> Suterra, LLC                          | <b>1029</b> Aceto Agricultural Chemicals Corp.                       | <b>78</b> California State Beekeepers Association          |
| <b>432</b> Bowsmith, Inc.   | <b>816</b> ORO AGRI, Inc.                        | <b>1030</b> Farmers International, Inc.                              | <b>79</b> California Department of Pesticide Regulations   |
| <b>433</b> Red Barn/Progressive Ag Sprayers/Northwest Tillers, Inc. | <b>817</b> Nelson Manufacturing Company, Inc.    | <b>1031</b> Duarte Nursery   | <b>80</b> UC Agriculture and Natural Resources             |
| <b>503</b> Amiad Water Systems                                      | <b>818</b> Simplot Grower Solutions              | <b>1032</b> Agroplasma, Inc.   |  |
| <b>505</b> Valent USA   | <b>819</b> Flory Industries                      | <b>1033</b> EcoCube/ABM Scale/JEM-ESP/Central Valley Software Design |  |
| <b>506</b> Pacific Southwest Irrigation Corporation                 | <b>903</b> Westbridge Agriculture Products       | <b>1034</b> West-Link Corporation                                    |  |
| <b>507</b> California Industrial Rubber                             | <b>905</b> Modern Process Equipment, Inc.        | <b>1103</b> Spectrum Technologies                                    |  |
| <b>509</b> California Industrial Rubber                             | <b>906</b> Arysta Life Science                   | <b>1105</b> Boyett Petroleum   |  |
| <b>511</b> California Sweepers                                      | <b>907</b> Greenleaf Ag                          | <b>1106</b> Netafim USA  |  |
| <b>513</b> DuPont   | <b>909</b> Band-It Spreading Service             | <b>1107</b> Sun Harvest, Inc.  |  |
| <b>514</b> Schaben Industries                                       | <b>910</b> MoistTech                             | <b>1108</b> Waterford Irrigation Supply                              |  |
| <b>515</b> NutStar Software   | <b>911</b> Napolol                               |  |  |
| <b>516</b> Soil Basics Corp.  | <b>912</b> Brandt                                |  |  |
| <b>517</b> Burchell Nursery   |  |  |  |
| <b>518</b> Certified Laboratories                                   |  |  |  |



# EXHIBITOR+SPONSOR DESCRIPTIONS

## A&L WESTERN AGRICULTURAL LABORATORIES : BOOTH 811

Robert Butterfield • rbutterf@al-labs-west.com

1311 Woodland Avenue #1 • Modesto, CA 95351 • 209.529.4080

A&L Western Agricultural Laboratories is a full-service agricultural and environmental testing laboratory. A&L Laboratories is a participating ALP and NAPT soil-and-plant testing laboratory, employing approved methodologies for soil and plant analysis.

## ACADIAN SEAPLANTS LIMITED : BOOTH 1113

Armando Tenias • atenias@acadian.ca

30 Brown Avenue • Dartmouth, Nova Scotia, Canada B3B 1X8 • 902.468.2840

Acadian Seaplants is the world leader in seaweed-based solutions for humans, animals and plants. Through its gentle extraction processes, Acadian captures and preserves the valuable, nutritional qualities of fresh seaweed in the final product for maximum benefit. Rich in beneficial compounds, Acadian is derived from Ascophyllum nodosum seaweed. Acadian is designed to enhance crop productivity by addressing specific benefits based on each crop's unique needs, including increasing nutmeat yield and reducing post-harvest stresses. With three decades of scientifically proven results, Acadian is an ideal natural ingredient that ensures the production of healthy, productive plants.

## ACETO AGRICULTURAL CHEMICALS CORP. : BOOTH 1029

Fred Trudwig • ftrudwig@aceto.com

4 Tri Harbor Court Port • Washington, NY 11050 • 516.627.6000, Ext. 569

Syllit 65 WG almond fungicide has just received California approval and is commercially available. Due to emerging resistance problems of other products, Syllit's unique mode of action (unique FRAC group U12) will offer an important tool alone or in a tank mix to help almond growers with their bloom and post petal fall period disease challenges. After several years of testing, Dr. Jim Adaskveg at University of California–Riverside says Syllit has shown excellent control of scab, shot hole and suppression of brown rot, and will have an important role in managing diseases faced by almond growers.

## ACTAGRO : BOOTH 419

Ersilia Lacaze • lacaze@actagro.com

4516 N. Howard • Biola, CA 93606 • 559.579.1239

Actagro, LLC is a global leader in plant nutrient technology. Our organic, acid-based products are highly effective when used with plant nutrients and are a unique class of plant nutrition products, based on proprietary technologies. Complex with primary, secondary and micronutrients to formulate specific blends, Actagro products are designed to complement conventional plant nutrition and to meet the needs of progressive and profitable growers and dealers throughout the United States and other countries.

## ACTIONPAC SCALES & AUTOMATION : BOOTHS 1203, 1205

John Dishion • amelia@actionpacscales.com

1300 Yarnell Place • Oxnard, CA 93033 • 805.487.0403

## AG SOIL WORKS : BOOTH 1115

Jeff Lehar • jlehar@agsoilworks.com • 805.674.5747

California Agricultural Soilworks, utilizing a patented system, specializes in precision soil pre-plant improvements for vineyards and orchards. Our precision ripping and development technology has been developed over the last decade in concert with soil scientists, engineers and growers. The process focuses on sustainability and water efficiency. This system provides optimal soil conditions for initial tree establishment by continuously opening the soil and mixing amendments within the root zone utilizing RTK GPS guidance along the future tree row. By providing uniform soil preparation, growers realize better tree growth, health, nut quality and crop yield while reducing water usage. Our demonstrated results and dedicated team will design the program for optimal results for your site.

## AGRA SERVICES : BOOTH 1004

Bob McGowan • bob@agramarketing.com

60 Independence Circle, Suite 203 • Chico, CA 95927 • 530.894.1782

Agra Services provides growers with high-quality natural fertilizers and soil amendments. We carry True Organic liquid and dry pelletized fertilizer. We have competitive pricing for gypsum and lime delivery and spreading service. We sell compost derived from grape pomace and pruning waste. Composted poultry and dairy manures are available as well as worm castings and ash. New products include mycorrhizae formulations by Mycorrhizal Applications and an aerobic microbial solution called Yields Max that inoculates both soil and foliage with beneficial microbes. Our newest products are a nontoxic wood sealant for tree posts and bee hives and a trace mineral supplement called AZOMITE.®

## AGRI-VALLEY IRRIGATION, INC. : BOOTH 711

Larry Rompal • larry@agrivalley.com

P.O. Box 11881 • Fresno, CA 93775 • 559.486.1412

Agri-Valley Irrigation, Inc., founded in 1983, has developed into a firm that provides a unique irrigation service to the San Joaquin Valley agriculture community. Agri-Valley can engineer, design, fabricate, install and maintain your project regardless of size. We carry a large inventory of parts at each of our locations: Fresno, Firebaugh, Five Points, Merced, Bakersfield and Visalia. Our field staff of installation and service personnel are radio dispatched and considered the finest in the industry. Our installations include mechanical sprinklers, drip irrigation systems, subsurface systems, PVC transport systems, solid set sprinklers and all aspects of aluminum pipe.

## AGRIMAR CORPORATION : BOOTH 808

Scott Arnold • jsapfi@aol.com

764 N. Leonard • Fresno, CA 93737 • 559.250.1628

Everyone knows a good nut set guarantees a high fertilization rate and rapid growth of the young nut. At this point, a quality nut set directly influences the number of nuts and their development. During this crucial period, you must leave nothing to chance. Poor flowering irreversibly compromises your financial profits at harvest. Being on your guard and knowing how to choose the best ally will give nature the helping hand required for your success. Gomar BM 86 is the proven ally for this critical period. Bloom Time is Gomar Time. Independently Tested... Field Proven.

## AGRIUM ADVANCED TECHNOLOGIES : BOOTH 813

Gary Brummet • gbrummet@agriumat.com

106 King Street • Exeter, CA 93221 • 559.429.9002

Agrium Advanced Technologies is focused on giving you SMARTER WAYS TO GROW® healthy turf, plant and crops. Our innovative technologies, products and practices help you do your job better and more efficiently while reducing environmental impact. When it comes to plant nutrition products, Agrium Advanced Technologies is the world's leading manufacturer and marketer of enhanced efficiency fertilizers and micronutrients. Agrium Advanced Technologies fertilizer solutions are on the forefront of environmentally friendly technology and these solutions give growers and turf managers an innovative way to achieve higher yields and optimum quality.

## AGRO-CULTURE LIQUID FERTILIZERS : BOOTH 923

Armando Gutierrez • armando.gutierrez@agroliquid.com

7200 Jacinto Avenue • Sacramento, CA 95823 • 916.200.9430

High-production agriculture meets environmentally responsible nutrient management at Agro-Culture Liquid Fertilizers, the research-driven fertilizer company for today's crops and tomorrow's growers. Our products allow the application of more usable plant food in smaller quantities. By stressing the importance of balanced formulations that include micronutrients, they achieve the same, and often better, results. We understand that advanced crop fertility products and agricultural practices come from research and applied technology. Our entire line of high-performance fertilizers and supplements are formulated to help growers achieve the best possible yields, while employing sustainable agricultural practices.

## AGROMILLORA-CA SPONSOR : BOOTH 1117

Kenneth Noren • knoren@agromillora-ca.com

612 E. Gridley Road • Gridley, CA 95948 • 530.846.0404

Agromillora-Ca is a full-service nursery operation, specializing in both rootstocks for many different nut and fruit trees, as well as finished grafted trees such as almonds, stone fruit, walnuts, pistachios and olives. We also specialize in a proprietary line of rootstocks, which are currently being used in several different growing regions around the world, including California.

## AGROPLASMA, INC. : BOOTH 1032

Alberto Diaz • alberto@agroplasmainc.com

2430 S. 20th Street, Suite E • Phoenix, AZ 85034 • 602.233.2223

Agroplasma, Inc. is your source for the finest fertilizers designed for both conventional and organic farming. Our products are safe, green and proven season after season throughout the world. We are proud to make this exceptional line of products available in North America. The results speak for themselves! With our variety of products, our goal always remains the same: unmatched customer satisfaction.

## AGWORLD : BOOTH 1114

Zach Sheely • zach@agworld.co

1601 Pelican Lakes Point, Suite 101A • Windsor, CO 80550 • 559.816.1207

Agworld is a cloud-based information management platform providing a space where farmers, consultants, contractors, processors, industry groups, suppliers and others in the industry can securely access and share business and industry-wide information. Agworld provides a secure place to capture and store information, write recommendations, create work orders, manage documents, view and interact with maps and imagery, access information libraries (including pest and product info and MSDS labels) and direct reporting and field processes. Agworld delivers field tools to growers, consultants and contractors, including iPad and iPhone apps that function with or without a cellular signal.

## AIR-O-FAN PRODUCTS CORP. : BOOTH 520

Brent Davis • brent@airofan.com

507 E. Dinuba Avenue • Reedley, CA 93654 • 559.638.6546

Air-O-Fan is a family owned and operated business established in 1945. Today's Air-O-Fan sprayers include four diesel-engine-powered models offering 500-, 600- and 1,000-gallon tank options, and have fan diameters ranging from a single 40-inch to dual 45-inch fans for orchard application. Air-O-Fan's PTO drive machinery includes 10 models, ranging from 300 to 1,000 gallon, and 30-inch to 38-inch fans for orchard and vineyard applications and a full line of quality herbicide sprayers to cover your weed spraying needs. Despite humble beginnings in a small California town, Air-O-Fan is now known by California growers as the Cadillac of sprayers, and we thank you for the business!

## ALMOND BOARD OF CALIFORNIA : BOOTH 623

Jenny Kenschak • jkenschak@almondboard.com

1150 Ninth Street, Suite 1500 • Modesto, CA 95354 • 209.343.3248

Leading the California Almond industry through research represents the foundation of the Almond Board's commitment to support the industry's goal of maintaining healthy orchards using environmentally sound practices and providing customers with a safe, wholesome and enjoyable food product. These research efforts, programs and resources have been created to assist growers, handlers and allied industry members in this process. Among these is the California Almond Sustainability Program, which provides growers with a mechanism to document and quantify sustainable almond-growing practices. Almond Board staff and chairpersons are available to discuss Board administration, the Almond Leadership Program, global marketing, and health and nutrition research programs at the ABC booth.

## AMBASSADOR ENERGY : BOOTHS 1013, 1015

Kelly Smith • ksmith@ambassadorenergy.com

24630 Washington Avenue, Suite 102 • Murrieta, CA 92562 • 866.586.1840

Ambassador Energy/Sybac Group is not only California's most credentialed solar leader with 100s of MegaWatts of solar installed, but is also the company that trains other solar companies! What does that mean to you? AE's contractor licenses C10/Electrical, C46/ Renewable Energy, B/General and elite NABCEP credentials; coupled with Sybac's 100s of globally installed MegaWatts of solar, assures you the best design, engineering and installation expertise available in America today! NABCEP is THE national gold standard credential within the solar industry. We are not only accredited, but also one of only a few NABCEP trainers nationwide. See the solar experts at Booth 1015.

## AMIAD WATER SYSTEMS : BOOTH 503

Matt Aguiar • matt@amiadusa.com

2220 Celsius Avenue • Oxnard, CA 93030 • 800.969.4055

Amiad Water Systems is the industry leader in self-cleaning, filter-screen technology. These automatic water filters are commonly used for irrigation waters protecting sprinklers, jets and drip emitters. These filters provide the lowest back-flush volume of water without interrupting system flow. We also provide disk, manual and semi-automatic filters.

## ARYSTA LIFE SCIENCE : BOOTH 906

Phil Reding • phil.reding@arystallifescience.com

5660 Stonehaven Court • Granite Bay, CA 95746 • 916.768.2683

Arysta Life Science is one of the largest privately held crop protection and life science companies that specializes in the marketing and distribution of innovative solutions for today's dynamic marketplace. For almond growers, our family of fungicides anchored by PH-D® along with Iprodione and CAPTAN offers protection from harmful diseases (including Alternaria, brown rot and blossom blight) with minimal restrictions. Specifically, with its unique mode of action, PH-D® is a broad-spectrum fungicide with a strong resistance management tool to control strobilurin-resistant Alternaria, particularly in almonds. Visit www.arystallifescience.us to learn more.

## BAGHOUSE & INDUSTRIAL SHEET METAL SERVICES, INC.

### BOOTH 401

Sonia Rodriguez • eric@baghousebiz.net

1731 Pomona Road • Corona, CA 92880 • 951.272.6610

Baghouse & Industrial Sheet Metal Services is more than a Baghouse Service company and sheet metal fabricator. We are "The Industrial Team." We offer dust collection, oxidizer equipment and service work. We offer fans, parts, filters and media, and food grade fabrication with field installations. We also offer bulk handling equipment, feeders and weighing equipment, as well as explosion and fire protection. See our pneumatic conveying systems, laser and water-jet cutting services. 1888baghouse.com

## BAICOR, LLC : BOOTH 309

Elke Brown • elke@baicor.com

1895 North 600 West • Logan, UT 84321 • 435.752.2475

Baicor, LLC is a manufacturer of fertilizers specializing in liquids for foliar and soil applications. Baicor brings these exceptional products to you. The line of Baicor plant nutrients is 100% environmentally friendly and organically based. Each is specifically formulated to provide the optimum level of nutrients that plants need. Baicor uses products that include all essential nutrients required for plant growth and development.

## BAND-IT SPREADING SERVICE : BOOTH 909

Alex McLeod • alexandergr8@msn.com

333 W. Linwood • Turlock, CA 95380 • 209.614.5528

Accuracy unparalleled in the industry. We are a family-owned business that has been serving clients for 20 years in Stanislaus, Merced and San Joaquin counties. Our patent-pending machines use precision technology to achieve an accurate weight, tree after tree. Band-It saves the grower money by placing dry fertilizer strategically where it needs to go, using various placement patterns. Would you like to know just how accurate we are? Stop by our booth.

## BASF PREMIER SPONSOR : BOOTH 617

Troy Schlundt • troy.schlundt@basf.com

2060 N. Quincy Road • Turlock, CA 95382 • 209.604.3360

No matter what crop you grow, BASF Crop Protection delivers innovative solutions that help you get the most out of every acre. The BASF portfolio includes a variety of herbicides, fungicides and seed treatment technologies that provide the highest level of crop protection. BASF invests \$700 million each year in research and development of new chemistries, resources and tools to help growers, retailers and distributors, consultants, industry partners and students find solutions. At BASF our goal is yours: healthier plants, higher yields and greater profit potential. Learn more at www.agproducts.basf.us.

## BEELER INDUSTRIES : BOOTH 319

Greg Dabney • greg@beelerindustries.com

4664 Kiernan Court • Salida, CA 95368 • 209.545.0740

Beeler Industries is dedicated to the art of design, integration and commissioning of tree-nut processing systems. Our mission is partnering quality products with sound designs for maximum grower return in the global market.

## BIOFLORA : BOOTH 1025

Raquel Galo • receptionist@globalorganicsgroup.com

4050 S. Sarival Avenue • Goodyear, AZ 85338 • 623.932.1522

BioFlora is the leading provider of biological nutrients for sustainable fertile soil and plant development. Combining 40 years of expertise with a proprietary and patented technology, BioFlora offers an unprecedented wealth of industry knowledge, innovative processes and solutions, as well as customized products and services. BioFlora's balanced approach is an established and sustainable practice, which plays a vital role in the well-being of the planet and all living organisms.

## BIOMÉRIEUX : BOOTH 322

Matthew DeWitt • matthew.dewitt@biomerieux.com

606 Virginia Avenue • Modesto, CA 95354 • 209.222.1907

BioMérieux is a leading international group specializing in the field of in vitro diagnostics since 1963. BioMérieux provides diagnostic solutions (reagents, instruments, software) that are used for microbiological analysis of food, drugs or air samples to monitor and confirm the quality of the production process and finished product. BioMérieux partners with customers to deliver the most comprehensive offering of products and solutions for food testing with a focus on culture media preparation, sample preparation, next-day quality indicator enumeration, next-day pathogen detection and identification, aseptic testing, training and education, real-time temperature monitoring and LEAN approaches to improving laboratory efficiency.

## BLUE MOUNTAIN MINERALS : BOOTH 1009

Christina Johnson • cjohanson@bluemtnmin.com

24599 Marble Quarry Road • Columbia, CA 85310 • 209.533.0127

Blue Mountain Minerals is located in the Sierra Nevada Foothills and is the largest producer of limestone products in Northern California. We produce agricultural limestone and dolomitic limestone that is OMRI listed, high quality and consists of natural minerals used to condition and enrich crop soil.

## BORRELL USA CORP. GOLD SPONSOR : BOOTH 423

Charles Boddy • charles@jborrell.com • Merced Airport Industrial Park

260-262 Riggs Avenue • Merced, CA 95341 • 209.526.7735

Borrell USA Corp is again a proud sponsor of The Almond Conference 2013. Our facility in Merced has been busy this past year with nonstop assembly work for the various lines installed in California. The equipment lineup for 2014 will include all-new ultra-efficient dryers, together with coolers, pasteurizing and conditioning technology at highly competitive prices, new 3-D dicing equipment and much more. Our quest for gentle conveying continues with new additions of high capacity spiral elevators and improvements to our range of blanchers, hullers and shellers.

## BOWSMITH, INC. : BOOTH 432

Kari Grove • kgrove@bowsmith.com

131 Second Street • Exeter, CA 93221 • 559.592.9485

Fan-Jet & Fan-Jet Plus microsprinklers are designed, built and backed by Bowsmith. Introduced in 1977, Fan-Jet microsprinklers irrigate efficiently over a larger wetted area than drip, aid in frost protection and cost less than other types of sprinklers. In 2006, the revolutionary Fan-Jet Plus microsprinkler was introduced. It combines the quality of the original Fan-Jet microsprinklers with the added feature that prevents clogging pattern due to insects and other external objects.

## BOYETT PETROLEUM : BOOTH 1105

Carl Haney • chaney@boyett.net

601 McHenry Avenue • Modesto, CA 95350 • 209.988.0695

Boyett Petroleum is a family-owned, Modesto-based company since 1934. Today, Boyett Petroleum is a wholesale supplier to over 400 fuel stations, including Valero, ARCO, 76 and Shell, and has an ownership interest in over 40 retail sites under the brand name Boyett Petroleum or Kwik Serv. Boyett Petroleum is a major supplier to agricultural and commercial users of gasoline, diesel, and red dye diesel fuel. Both locally and throughout the state Boyett Petroleum has been exemplified by many businesses and citizens for their strong family values, honest business practices and active community involvement. For more information, please visit www.boyettpetroleum.com.



**BRANDT SPONSOR : BOOTH 912**

Kelly Mendrin • kelly.mendrin@brandt.co  
P.O. Box 35000 • Fresno, CA 93745 • 559.499.2100

A leading agricultural company, Brandt consists of three divisions: Specialty Formulations, Retail Agronomy and Dealer Support, serving growers around the globe. Founded in 1953 by Glen Brandt and his sister Evelyn Brandt Thomas to help Illinois farmers adopt new and profitable technologies, the company has experienced aggressive growth under the leadership of President and CEO Rick Brandt. Innovation, technology and strong customer service are a few of the core beliefs that drive Brandt today. Brandt's focus is providing the products and services that give growers the best opportunity for maximum return while building a stronger, healthier and more abundant food supply. For more information, visit Brandt on the web at www.brandt.co.

**BUBCO, INC. : BOOTH 320**

Bubba Simnacher • bubba@bubco.com  
P.O. Box 1840 • Lodi, CA 95241 • 209.367.3885

We provide low-volume sprayers that can reduce your chemical cost by 50%. Our Orchard Special is adjustable and designed to cover the whole row, trunk to trunk or under the tree only. Aerway aerators open up the ground for water penetration. FAE offers a wide range of mulching, rock-crushing and soil-stabilizing equipment. The Land Pride line has over 200 tractor attachments for your farming needs. We also offer a tractor-mounted hedger for light trimming and maintenance.

**BÜHLER GROUP : BOOTH 333**

April Courville • april.courville@buhlergroup.com  
13105 12th Avenue North • Plymouth, MN 55441 • 763.847.0248

Buhler is a global specialist and technology partner for plant, equipment and related services for processing basic foods. In the area of nut processing, Buhler offers an array of systems and individual machines that are configured for your specific application. Buhler can assist with material handling, cleaning systems (including optical sorting from Buhler Sortex), drying and roasting technology (Buhler Barth and Buhler Aeroglide), chopping and grinding equipment and last, but not least, the CCP: Controlled Condensation Process, a gentle pasteurization process for low-moisture foods such as nuts. Please visit us at our booth to learn how we can add value to your almond products.

**BURCHELL NURSERY : BOOTH 517**

Ron Boone • ronb@burchellnursery.com  
12000 State Highway 120 • Oakdale, CA 95361 • 209.845.8733

Burchell Nursery has been passionate about improving the almond industry for over 70 years. Our proven track record of successful varieties includes Monterey, Fritz, Avalon, Wood Colony, Carmel, Livingston and the newest varieties, Capitola and Supareil, more than any other commercial nursery. Our pursuit of superior varieties continues with self-fruitful varieties, better rootstocks, certified virus-free trees and practical service that is second to none. Burchell Nursery is also the only nursery with an in-house breeding program. So, if you are as passionate about almonds as we are, look no further than Burchell Nursery to support your needs.

**CABLEVEY CONVEYORS : BOOTHS 406, 408**

Larry Van Zee • karl.seidel@cablevey.com  
P.O. Box 148 • Oskaloosa, IA 52577 • 641.673.8451

Cablevey Conveyors is a tubular drag conveyor that moves tree nuts, peanuts and other nuts gently. Moving your almonds and other nuts gently will eliminate breakage. Keeping your product intact has been the goal since Cablevey Conveyors began in 1971. Your friable and valuable nuts are moved gently by slow-speed conveying using cables and discs without the introduction of air, vacuums, pneumatics or bucket systems. Plant managers and engineers rely on Cablevey systems for ease of use, installation, cleaning and reliability. Moving products gently is the Cablevey way to convey. Visit cablevey.com.

**CALIFORNIA DEPARTMENT OF PESTICIDE REGULATIONS****RESEARCH POSTER AREA 79**

Paul Verke • pverke@cdpr.ca.gov  
1001 I Street • Sacramento, CA 95814

CDPR's mission is to protect human health and the environment by regulating pesticide sales and use, and by fostering reduced-risk pest management. Come by the DPR table near the conference poster session to pick up materials and learn the latest about various DPR programs. Visit www.cdpr.ca.gov for more information.

**CALIFORNIA INDUSTRIAL RUBBER : BOOTHS 507, 509**

John Hayes • john@cir.net  
400 Cedar Avenue • Atwater, CA 95301 • 209.992.0103

California Industrial Rubber provides conveyor belt and industrial rubber goods. Family owned, we manufacture rubber and plastic products for agricultural and industrial markets. Our product line ranges from belts and hose products to adhesives, matting and plastics. We even offer protective clothing. Our professionals, many with over 15 years' experience, are dedicated to quality service. With six convenient California and Nevada locations, we strive to advance premium rubber and plastic products. Check our great prices and see how we can help you by calling California Industrial Rubber today!

**CALIFORNIA MILL EQUIPMENT : BOOTH 812**

Geoff Powers • gpowers@calmill.com  
213 C Street • Turlock, CA 95380 • 209.669.2696

California Mill Equipment Company, established in 1952, has been supplying quality parts and equipment from the most respected manufacturers and suppliers in their fields. We are recognized for our quality product lines, outstanding service and forward-thinking equipment solutions. Our company serves many industries, such as agricultural, food processing, dairy and poultry feed manufacturing and seed processing as well as many industrial applications to include energy producers, glass recycling, fertilizer, rendering and chemical manufacturers. California Mill Equipment Company has a long-standing reputation for excellence on the West Coast, providing equipment and services throughout California, Nevada, Arizona, Oregon and Washington.

**CALIFORNIA STATE BEEKEEPERS ASSOCIATION****RESEARCH POSTER AREA 78**

Carlen Jupe • castatebeekeepers@hotmail.com  
5307 Jeppson Court • Salida, CA 95368 • 209.545.5359

Organized in 1889, the purpose of the California State Beekeepers Association is to educate the public about the beneficial aspects of honey bees, advance research beneficial to beekeeping practices, provide a forum for cooperation among beekeepers and support the economic and political viability of the beekeeping industry.

**CALIFORNIA SWEEPERS : BOOTH 511**

Bill Summers • bill@californiasweepers.com  
P.O. Box 3515 • Fresno, CA 93650 • 559.645.9345

We sell Factory Cat heavy-duty scrubbers and sweepers for facility floor cleaning.

**CALTEC AG, INC. : BOOTH 217**

John Monnich • jmonnich@caltecag.com  
1420 F Street, Suite 100 • Modesto, CA 95354 • 209.575.1295

Caltec Ag uses proven technology-based plant physiology to stimulate root health. Greenfeed foliar nitrogen applied to the plant reduces nitrate accumulation in soil and water, stimulates root proliferation, increases arginine production, brings blossom ovaries to conclusion and increases nut and fruit size without adding massive amounts of salt. Kelpak foliar organic seaweed extract increases root mass production and pollen tube length and produces a longer pollination time. Terra Treat increases lateral water penetration of compacted soils to reduce water puddling and root decay. Lithovit, a calcium carbonate product, increases root activity by converting to calcium dioxide in leaf cells to increase chlorophyll content.

**CALWEST RAIN : BOOTH 703**

Ryan Hergenroeder • ryanh@calwestrain.com  
P.O. Box 306 • Kerman, CA 93630 • 559.846.5326

CalWest Rain is the complete irrigation company from the largest, well-developing engines in the country to the last tiny designs, and it sells and services it all. More than 20 years ago, a San Joaquin Valley farming company felt a need to have both an irrigation and pump company as a supplier. The result of that need was an idea given by the grower to Larry Isheim and Jim Martin. Larry's expertise in design, installation and service of agricultural irrigation systems, combined with Jim's experience in pumps, created the company of CalWest Rain.

**CENERGY POWER : BOOTH 916**

Nader Yarpezeshkan • nader@cenergypower.com  
3176 Lionshead Avenue, Suite 11 • Carlsbad, CA 92010 • 760.603.1933

Cenergy Power is a solar developer focused on delivering solar value in the large commercial and small utility markets across the United States. It consists of seasoned professionals in the areas of power engineering, construction management and project financing. For more information about Cenergy, please visit www.cenergypower.com.

**CERTIFIED LABORATORIES : BOOTH 518**

William Hawes • whawes@certified-laboratories.com  
3241 Liberty Square Parkway • Turlock, CA 95380 • 209.664.1100

Certified Laboratories of Northern California is a USDA-VASP approved laboratory centrally located in the heart of the California Almond industry at our new relocated facility in Turlock. We offer daily courier pickups and the most extensive range of testing services available to the nut industry. Our CertLabLink service offers the convenience of viewing testing results online. With internationally recognized accreditations, more than 50 years of Aflatoxin analysis experience and a scope of work second to none, Certified Laboratories is equipped to handle all your food safety needs. www.certified-laboratories.com

**CERTIS USA : BOOTH 317**

Joseph Lebow • jlebow@certisusa.com  
9 Torino Court • Chico, CA 95973 • 559.304.1601

Headquartered in Columbia, MD, Certis USA is a leading manufacturer and distributor of the largest line of biopesticide products for specialty agricultural and horticultural markets, and the home and garden market. Certis USA products provide valuable solutions by meeting the challenges faced by today's growers who are seeking sustainable alternatives, resistant pest management and harvest solutions, and low pesticide residues for market flexibility and export accessibility. For more information about Certis USA or its products, visit www.CertisUSA.com.

**COMPASS MINERALS SPONSOR : BOOTH 709**

David Furbeck • furbeckd@compassminerals.com  
9900 West 109th • Overland Park, KS 66210 • 913.344.9348

Great Salt Lake Minerals (GSLM) is the largest North American producer of Sulphate of Potash (SOP), in addition to other micronutrient products.

**CORE AGRI, LLC : BOOTH 1006**

Tracy Starich • tracy.starich@coreagri.com  
P.O. Box 1027 • Arroyo Grande, CA 93421 • 559.583.8115

CoreAgri offers a full line of EDTA micronutrients, foliar sprays, humic acid, liquid magnesium nitrate, and zinc sulfate solutions at both 10% and 12% zinc. CoreAgri operates a production facility in Hanford, California. In addition to micronutrients, CoreAgri is a leading supplier of sulfur bentonite and sulfur micronutrient products.

**CPM WOLVERINE PROCTOR, LLC : BOOTH 1124**

Charles Kovacs • kovaccsc@cpmwolverineproctor.com  
251 Gibraltar Road • Horsham, PA 19044 • 215.443.5200, Ext. 4349

CPM Wolverine Proctor has supplied custom-designed dryers, roasters, coolers and specialized equipment to the food industry for more than 100 years. With more than 500 peanut and tree nut installations worldwide, we are recognized as the leading supplier of dryers and roasters to this industry. Our equipment line includes dryers for in-hull almonds, blanched almonds, almond slices and slivers, toasters for diced, sliced and slivered almonds; roasters for whole, natural almonds and coated, seasoned almonds; steamers and plasticizers for whole, natural almonds. We welcome the opportunity to evaluate your requirements.

**CROP PRODUCTION SERVICES & PRECISION AGRI LABS****BOOTHS 1118, 1120**

Dunya Haproff Fondse • dunya.fondse@cpsagu.com  
7815 N. Palm Avenue, Suite #410 • Fresno, CA 93711 • 559.436.2940

Crop Production Services continues to provide the highest level of service to the valley's almond industry. Our strength in matching people, science and technology to growers' needs is the benchmark for superior plant nutrition and plant protection. Our licensed PCAs are supported by a technical team of field agronomists, environmental monitoring systems, and our own soil, water and tissue laboratory, Precision Agri Lab.

**CVSAG : BOOTH 316**

Julie Locke • jlocke@cvsag.com  
P.O. Box 1947 • Tulare, CA 93275 • 559.686.6202

CVSag is the leader in providing carbon-based fertilizer and waste water treatment technology to the agricultural industry. The synergistic blend of carbon energy combined with both macro and micronutrients has a definite effect on nutrient availability, water quality and water penetration while providing pH control. We are growing more with less, improving yields and crop and soil health with high grade carbon energy.

**DAVE WILSON NURSERY : BOOTHS 426, 428**

Katie Amaral • kamaral@davewilson.com  
19701 Lake Road • Hickman, CA 95323 • 209.874.1821

Dave Wilson Nursery has been providing the almond industry with the highest-quality trees for more than 70 years. Our exclusive relationship with Zaiger Genetics has distinguished Dave Wilson Nursery from other nurseries. We are the only nursery dedicated to providing growers with new inventions and progressive products for the almond industry, like our new Independence® almond and the acclaimed Atlas® and Viking® rootstocks. Stop by our booth to learn how these and other new innovations from Dave Wilson Nursery can help improve the productivity, efficiency and returns for your next planting.

**DEERPOINT GROUP, INC. : BOOTH 917**

Eva Kwong • ekwong@thedeerpointgroup.com  
4339 N. Sellard Avenue • Fresno, CA 93722 • 559.224.4000

Deerpoint Group provides total water treatment for agricultural irrigation users. We provide a no-cost evaluation of the customer's irrigation system and water. Our turnkey systems include chemicals, monitoring and chemical-feed equipment that are serviced and managed by Deerpoint service representatives. Our products include CLEAR WATER, which prevents the buildup of inorganic deposits in the irrigation system, DPG Continuous Chlorination, a safe, effective, economical system for controlling algae, bacteria and other biological debris preventing plugging of the irrigation system, also controls root intrusion in buried irrigation systems, and BLUE WATER, a program using labeled copper sulfate to control algae and certain weeds in reservoirs used for irrigation.

**DELTA TECHNOLOGY CORPORATION : BOOTH 915**

Chuck Denny • Chuck@ProEdge-Services.com  
1602 Townhurst • Houston, TX 77043 • 713.464.7407

Delta Technology is a world leader in the field of optical sorters. Through diligent and dedicated effort, we have continued to create technological innovations and a leadership position. We are a manufacturer, not an assembler. Not only are our designs of our own inventions, but all metal works and special components are made under our own roof to the strictest industrial standards. This is the real guarantee of a quality product that will produce accurate results on a sustaining basis, day after day, year after year. Contact Delta Technology for your specific application needs.

**DFA OF CALIFORNIA : BOOTH 430**

Thomas Vogel • tomvogel@agfoodsafety.org  
710 Striker Avenue • Sacramento, CA 95834 • 916.561.5900, Ext. 104

DFA of California was created more than 100 years ago to promote better understanding among growers, processors and purchasers of dried fruit and tree nuts. Today, DFA offers full-service food laboratories, technical research, product inspection, arbitration, international advocacy and much more. DFA of California is a nonprofit organization with voluntary membership, committed to safe food and serving the agricultural industry and consumers.

**DIAMOND K GYPSUM, INC. : BOOTH 305**

Kris Allred • kris@diamondkgypsum.com  
1720 South Red Hills Drive • Richfield, UT 84701 • 435.896.8870

Diamond K specializes in the production of high-quality products for the agricultural industrial and pharmaceutical markets. Diamond K's unique technology offers ultra-fine, soluble products for the sprayable and fertigation markets. The unique process is designed to make blending "Ultra Fines" Sulfate of Potash, KMS and Premium 97 Solution Grade Gypsum into solutions for hassle-free distribution through any irrigation system. Diamond K also offers its second-to-none wetting agent, Aqua Drive, to increase the even movement and overall penetration of water. This is all tied together by the patented Diamond K applicator that was specifically designed, at great cost, to make fertigation simple.

**DONALDSON COMPANY : BOOTH 1023**

Scott Thomas • scott.thomas@donaldson.com  
28852 Alta Laguna Boulevard • Laguna Beach, CA 92651 • 714.366.8974

Donaldson Company, via the acquisition and partnership with LMC West, is the premier supplier of baghouses and air filtration equipment for the nut industry. We proudly feature all the previous LMC West products (LP Baghouses, Cyclones, Aspirators, Duct, etc.), and we have also adapted the latest Donaldson filtration technology into new products that will have major benefits for the almond industry. Our Duralife filter bags have a twice-the-life guarantee. Our new Powercore dust collectors have revolutionized a point of use approach that offers unparalleled filter efficiency and energy savings.

**DOW AGROSCIENCES : BOOTHS 313, 315**

Fred Rehman • fred\_elysianfields@yahoo.com  
1059 Court Street, Suite 104 • Woodland, CA 95695 • 530.668.6665

Pindar GT herbicide (long-lasting weed control, including fleabane and marehstail), Intrepid insecticide (ovicidal/larvicidal activity for NOW, PTB), Delegate insecticide (1-day PHI for PTB, NOW), Lorsban Advanced insecticide (NOW, PTB, ants), Telone soil fumigant (nematodes, replant disease), Goal 2XL and GoalTender herbicides (pre-/post-emergent broadleaves), Trellis herbicide (excellent crop safety, 92 weeds).

**DUARTE NURSERY SPONSOR : BOOTH 1031**

Lily Penfold • lily@duartenursery.com  
1555 Baldwin Road • Hughson, CA 95326 • 209.531.0351

Duarte Nursery is the industry leader, innovator and only almond tree nursery that is 100% committed to containerized tree production. Duarte Nursery is the largest tree and vine nursery in California and offers you unmatched flexibility and performance.

**DUPONT : BOOTH 513**

Mary Anne Frey • mary-anne.frey@dupont.com  
437 Briar Creek Drive • Hockessin, DE 19707 • 302.299.7412

Count on DuPont to ensure your best chance for success. The versatile DuPont portfolio features breakthrough products that fit your specific challenges and cultural practices, including short REIs and PHIs. Almond growers can count on DuPont products and services to effectively control insect, weed and disease issues.

**DYNAMIC COATING, INC. : BOOTH 404**

David Remmer • david@dciflooring.com  
5629 East Westover Avenue, Suite A • Fresno, CA 93727 • 559.225.4605

Dynamic Coatings, Inc. is a full-service floor and wall coatings and concrete restoration contractor for the fruit and nut industries. Some of the products include urethanes, MMA, epoxies, sealants, underlayments, moisture mitigation, waterproofing, polished/stained concrete and more. Some of our features are USDA/FDA compliant, chemical resistant, antimicrobial, rapid curing (1 hr), nonskid, and water resistant. Services include surface preparation, joint and crack repair, drain installation, wall caulking, cove base, sloping, moisture control, underlayments and safety lines. With more than 27 years of experience and a complete line of product and surface preparation equipment, we are ready for your next project.

**ECCUBE/ABM SCALE/JEM-ESP/CENTRAL VALLEY SOFTWARE DESIGN : BOOTH 1033**

Tom Hollman • tom@vandenbrinkpkg.com  
10237 Cimarron Woods Drive • LaVista, NE 68128 • 402.740.1512

EcoCube's Barrier Bag forms into a stand-up, stackable cube when filled. Ship more for less! No glue! Better protection with less bulk waste! Contact tom@vandenbrinkpkg.com. JEM manufactures scales and equipment for the nut industry. ABM Scale Company: custom weighing solutions including bulk/retail filling systems, tote/supersack filling, sizing automation and data integration. Contact josh@abmscale.com. Central Valley Software Design: our REACTS software provides inventory tracking, traceability, USDA management, grower reporting, scale automation and more. Contact ryan@evans@gmail.com.

**ERICK NIELSEN ENTERPRISES : BOOTH 814**

Hilary Porter • hporter@eneinc.com  
4453 County Road • Orland, CA 95963 • 530.865.9409

Erick Nielsen Enterprises, Inc. (ENE) has provided custom orchard services to California growers since 1972. In addition to our prune and pistachio harvesting, we offer mechanical pruning services such as topping, hedging, cross-hedging, skirting and slot pruning in a variety of tree crops. ENE is proud to offer innovative services with versatile and efficient equipment.



**EURODRIP USA : BOOTH 1234**

Lance Goldsmith • [lgoldsmith@eurodripusa.com](mailto:lgoldsmith@eurodripusa.com)  
1850 W. Almond Avenue • Madera, CA 93637 • 559.673.9100

Eurodrip USA is a leading manufacturer of agricultural drip irrigation products, offering complete system solutions, including drip tape, dripperline, valves and filters. Our mission is to play a vital role in the success of the American farmer as the most trusted drip and micro irrigation solutions company in the industry. Eurodrip USA, American owned and operated, is a member of the Eurodrip Group, a leading global manufacturer of drip irrigation products for over 30 years serving more than 60 countries worldwide. Install Confidence. [www.eurodripusa.com](http://www.eurodripusa.com)

**EXACT HARVESTING : BOOTH 1001**

Heath Flora • [heath@exactcorp.com](mailto:heath@exactcorp.com)  
5143 Blue Gum Avenue • Modesto, CA 95358 • 209.613.1983  
Low-dust, reduced-pass almond-harvesting equipment.

**FARM CREDIT ALLIANCE SPONSOR : BOOTH 1119**

Linda Sadler • [linda.sadler@farmcreditwest.com](mailto:linda.sadler@farmcreditwest.com)  
1478 Stone Point Drive, Suite 450 • Roseville, CA 95661 • 775.677.7876

American AgCredit, Farm Credit West, Fresno Madera Farm Credit and CoBank are cooperatively owned lending institutions providing agriculture and rural America with a dependable source of credit. They specialize in financing farmers, ranchers, farmer-owned cooperatives, rural utilities and agribusinesses. They offer a wide range of loan products and financial services, including long-term real estate loans, operating lines of credit, equipment and facility loans, cash management, and appraisal and leasing services—everything a “growing” business needs.

**FARMERS INTERNATIONAL, INC. : BOOTH 1030**

Dale Wallander • [jondalenuits@gmail.com](mailto:jondalenuits@gmail.com)  
260 Muir Avenue • Chico, CA 95973 • 530.566.1405

Farmers International is located amid the foothills of the Sierra Nevadas, birthplace of the California Almond industry. We are growers, processors and exporters of the finest quality California Almonds, with over 60 years of marketing experience. We have earned an excellent reputation in the almond industry. We're family owned and operated, maintain low overhead, vertical integration and have the flexibility to work with our customers' specific requirements. By maintaining strict quality control, we supply the finest shelled and inshell almonds to domestic and international markets. Please contact us for all your almond requirements.

**FBSCIENCES, INC. : BOOTH 1214**

Glenn Powell • [cpeck@fbsciences.com](mailto:cpeck@fbsciences.com)  
153 North Main, Suite 100 • Collierville, TN 38017 • 901.221.1200

An emerging global leader in plant health innovation, FBSciences is a life science company focused on growth-enhancement technologies and fertilizers for agricultural crops. FBSciences is dedicated to helping growers increase their crop yields and quality. Our products offer a safe, practical and sustainable solution for achieving greater crop yields and better plant health through better nutrient efficiency. Our products have been proven to successfully increase crop yields in a variety of crops.

**FLEXICON CORPORATION : BOOTHS 1223, 1225**

Dan Capwell • [dcapwell@flexicon.com](mailto:dcapwell@flexicon.com)  
2400 Emrick Boulevard • Bethlehem, PA 18020 • 610.814.2400, Ext. 10611

Flexicon Corporation is a world leader in the design and manufacture of bulk handling equipment and custom-engineered and integrated plant-wide systems that transport, discharge, fill, weigh, blend, deliver and/or feed a broad range of powder and bulk solid materials. Flexicon products range from individual equipment to automated systems that source bulk material from interior and exterior plant locations, transport it between process equipment and storage vessels, weigh it, blend it, feed it to packaging lines, extruders, molding machines and storage vessels, and load it into railcars and trailers.

**FLORY INDUSTRIES : BOOTH 819**

Stuart Layman • [slayman@floryindustries.com](mailto:slayman@floryindustries.com)  
P.O. Box 908 • Salida, CA 95358 • 209.545.1167

Manufacturers of nut harvesting equipment, shredders, dusters, flail mowers as well as custom fabrication. Serving the agriculture industry since 1936.

**FLY AWAY PEST CONTROL, INC. : BOOTH 610**

Mary Hop • [info@flyawaypestcontrol.com](mailto:info@flyawaypestcontrol.com)  
10994 Avenue 272 • Visalia, CA 93277 • 559.688.5661

Fly Away Pest Control, Inc. is your local California distributor for Bird Gard and Deer Shield digital, electronic repellents. Bird Gard uses a bird's primal fears and natural survival instincts to repel them. Digital recordings of species-specific distress and alarm calls, along with the sounds of their natural predators, are broadcast through high-fidelity weather-resistant speakers to convince birds they are under attack. A microprocessor and sophisticated random technology keeps birds from getting used to the sounds. Deer Shield works in a similar way to repel deer from orchards and farms.

**FMC CORPORATION : BOOTH 1016**

Leanne Becker • [leanne.becker@fmc.com](mailto:leanne.becker@fmc.com)  
516 West Shaw Avenue, #200 • Fresno, CA 93704 • 530.868.7040

FMC Corporation is a diversified chemical company serving agricultural, industrial and consumer markets globally for more than a century with innovative solutions, applications and quality products. The company employs approximately 5,000 people throughout the world and operates its businesses in three segments: agricultural products, specialty chemicals and industrial chemicals.

**FOOD SAFETY NET SERVICES : BOOTH 219**

Catherine Murphy • [catherine.murphy@fsns.com](mailto:catherine.murphy@fsns.com)  
186 S. West Avenue, Suite 104 • Fresno, CA 93706 • 210.384.8028

FSNS is a network of ISO 17025 laboratories accredited through A2LA. FSNS laboratories are open 24/7, 365 days and operate eight locations nationwide. FSNS provides a one-stop VASP-approved resource for microbiological analysis, chemical testing, nutritional analysis, residues and allergen testing. FSNS offers a comprehensive array of auditing services, GFSI recognized BRC audits and Animal Welfare PAACO Certifications. Educational workshops include HACCP, BRC, Environmental Monitoring Program Workshop and custom onsite courses.

**FOWLER NURSERIES, INC. : BOOTH 303**

Chuck Fleck • [chuck@fowlernurseries.com](mailto:chuck@fowlernurseries.com)  
525 Fowler Road • Newcastle, CA 95658 • 916.645.8191

Celebrating over 100 years of excellence, Fowler Nurseries, Inc. produces quality almond trees, offering standard varieties and rootstocks. Fowler also features innovative and highly productive rootstocks, including Krymsk® 86, Rootpac®-R, and Empyrean® 1. In order to best match the rootstock to the growing environment, Fowler continues to test promising rootstocks for almonds in many California locations. We are also the sole provider of Durango almond, a Nonpareil pollinizer covering the early bloom. A key player in shaping the modern almond orchard, Fowler Nurseries proudly features high-quality trees at a fair price.

**FRUIT GROWERS LABORATORY, INC. : BOOTH 914**

Denis Barry • [denisb@fglinc.com](mailto:denisb@fglinc.com)  
853 Corporation Street • Santa Paula, CA 93060 • 805.392.2032

Fruit Growers Laboratory, Inc. (FGL) provides laboratory analysis of soils, leaf tissue and irrigation waters. Analysis data is supported by a formidable quality assurance program. FGL also provides amendment guidelines to assist growers and their advisors with their fertilization programs. Analysis data, including historical data, can be archived, and effective statistical tables can be generated to display success of fertilization programs.

**GEARMORE, INC. : BOOTH 1233**

Myron Strong • [sales@gearmore.com](mailto:sales@gearmore.com)  
13477 Benson Avenue • Chino, CA 91710 • 909.548.4848

Gearmore was established in 1965 to supply high-quality implements for California agriculture. We provide over 200 different implements through servicing tractor dealers. We have always specialized in tractor attachments for orchard growers. Some of our more popular orchard products are large tillers with rollers, flail shredders, Venturi air sprayers, brush processors, air blast sprayers, discs, soil conditioners, spreaders, grading scrapers, slicing aerators and row mulchers.

**GRASSWORKS WEED WIPER : BOOTH 1216**

Linda Reed • [lindareed@prodigy.net](mailto:lindareed@prodigy.net)  
8703 East Farm Road 80 • Strafford, MO 65757 • 417.848.0566

GrassWorks Weed Wiper is the ultimate weed control system that eliminates the drift and drip of chemicals onto your crops. This roll on paintbrush application applies chemical to the weakest portion of the weed with no harm to desirable crops at a very economical cost. Units range from 3' to 50', with different models for any farming operation. Come by our booth and we will show you farmer and university results. The GrassWorks Weed Wiper successfully kills chemical-resistant Pigweed, Smut grass, Thistles, Johnsrass, Dog Fennel or any noxious weed with no harm to desirable legumes or crops. For more information, visit [www.weedproblems.com](http://www.weedproblems.com) or call 888-80-WIPER.

**GREEN TREE NURSERY : BOOTH 618**

Karlene Hanf • [karlenehanf@greentreenursery.com](mailto:karlenehanf@greentreenursery.com)  
23979 Lake Road • LaGrange, CA 95329 • 209.874.9100

Providing quality almond trees to California for more than 45 years! Green Tree Nursery offers a full line of deciduous nut and fruit trees, including almonds, walnuts and pecans through Linwood Nursery. Place your almond order now and check out our early order discounts! Contact Karlene Hanf at [karlenehanf@greentreenursery.com](mailto:karlenehanf@greentreenursery.com).

**GREENLEAF AG : BOOTH 907**

Erik Balling • [eballing@greenleafag.com](mailto:eballing@greenleafag.com)  
P.O. Box 343 • Coalinga, CA 93210 • 559.935.0959

Greenleaf Ag provides innovative product solutions for irrigation system maintenance and food commodity packaging. With over 20 years of experience, we deliver proven results.

**GRIMBLEBY-COLEMAN CPAS, INC. : BOOTH 705**

Jeff Bowman • [jbowman@gccpas.net](mailto:jbowman@gccpas.net)  
200 W. Roseburg Avenue • Modesto, CA 95350 • 209.527.4220

Grimbleby Coleman CPAs is an accounting and business advisory firm with headquarters in Modesto, California, and a second office in Oakdale, California. Since 1973, we have been trusted by the families and businesses of the Central San Joaquin Valley to tackle every challenge with deep skill, insight and experience. You can count on the people at Grimbleby Coleman to go beyond the numbers and actively support your personal and business success. We know that you, too, have people counting on you. Our mission is to always stay focused on the people behind the numbers.

**HARMON SYSTEMS INTL., LLC : BOOTH 707**

Terry R. Gong • [westernso2@aol.com](mailto:westernso2@aol.com)  
2201 Coy Avenue • Bakersfield, CA 93307 • 925.250.4559

Harmon SO2-Sulfurous Acid Generators have been used for nearly 60 years and are considered by many to be the most cost-effective way to control the pH of water and soil. This equipment manufactures acidity directly from the irrigation water itself, so it can be carried and delivered into the soil. When amending water to pH 6.5, this method actually provides twice the acidity of sulfuric, at half the material cost, while being safe to touch. It also keeps drip lines and emitters clean and free from being plugged with mineral scaling and bacterial slime. pH control improves water penetration, salt leaching, nutrient availability, crop quality, yield, rate of maturity, etc. Approved for organic crops.

**HELENA CHEMICAL COMPANY SPONSOR : BOOTHS 925, 927**

Jacob Barnett • [barnettj@helenachemical.com](mailto:barnettj@helenachemical.com)  
7576 N. Ingram Avenue, Suite 101 • Fresno, CA 93711 • 559.261.8495

Helena Chemical Company is a national distributor of crop-production inputs and services, including crop protection chemicals, seed, fertilizer and related services. The company was formed in 1957 and is headquartered in Collierville, Tennessee, near Memphis. In major agricultural regions across the country, Helena services customers from approximately 350 sales locations. Outside of agriculture, Helena's Specialty Division serves golf course, forestry, industrial, turf and ornamental markets. Helena's stated goal is to be the preferred link between suppliers and customers and those who grow food and fiber and manage vegetation.

**HILLTOP RANCH, INC. : BOOTH 405**

Dexter Long • [dexter@hilltopranch.com](mailto:dexter@hilltopranch.com)  
13890 Looney Road • Ballico, CA 95303 • 209.874.1875

Hilltop Ranch, Inc. was founded in 1980 by David and Christine Long. Today, Hilltop Ranch is one of the largest privately owned processors of almonds, handling about 30,000 tons annually and shipping to buyers in over 70 countries. With certification by the British Retail Consortium, customers can be assured that Hilltop Ranch complies with global standards for food safety. Hilltop's almond handling operations are integrated hulling, shelling, cleaning, grading, sorting, sizing, processing and in-house logistics. At Hilltop Ranch, we work hard to understand our customers' quality requirements and to provide timely shipment and accurate documentation.

**HORIZON NUT, LLC : BOOTH 329**

Anthony Morrison • [amorrison@horizonnut.com](mailto:amorrison@horizonnut.com)  
26487 N. Hwy 99 • Tulare, CA 93274 • 559.331.8708

Horizon Nut, where quality and food safety matter. For almond handlers/growers we offer two state-of-the-art chambers for PPO/propylene oxide. We deliver an Almond Board of California-validated 5-Log reduction of Salmonella enteritidis PT30 for almonds. Our chambers are USDA-certified for methyl bromide. We perform secure storage and load consolidation and verify that required residue levels are met. All inclusive pricing (shipping and treatment), discounts and rebates based on overall volume treated. Shipping direct to your customers available. For your estimate, contact Anthony Morrison, Food Technology Account Executive, Horizon Nut Company.

**HORTAU, INC. : BOOTH 307**

Jeremy Otto • [jotto@hortau.com](mailto:jotto@hortau.com)  
1075 Court Street, Suite 211 • San Luis Obispo, CA 93401 • 805.748.5505

Hortau specializes in wireless and web-based irrigation management. Hortau integrates proprietary soil-sensing innovations with the latest information technologies to deliver the most advanced irrigation management solutions on the market. Hortau was founded in 2002 by Dr. Jean Caron, agronomist, Ph.D. in soil physics, and Jocelyn Boudreau, agricultural engineer, M.Sc. in soil physics. Our expertise is in agronomy, soil physics and agricultural engineering. Improving crop production is our focus. We use the latest technologies to simplify irrigation decisions. This enables growers to maximize their crops and efficiently use water, energy, fertilizer and pesticides. Today's mobile internet platforms, such as the iPhone or Blackberry, allow for remote real-time system feedback and activation. Whether used for frost alarms or activating a complete irrigation system, Hortau uses the latest technologies to optimize crop production.

**IEH LABORATORIES AND CONSULTING GROUP : BOOTH 804**

Merle Jacobs • [merle.jacobs@iehinc.com](mailto:merle.jacobs@iehinc.com)  
217 Primo Way • Modesto, CA 95358 • 209.765.4389

IEH-JL Analytical Services, Inc. is one of a network of full-service testing laboratories offering all-encompassing analytical services and consulting for microbiology, chemistry, pasteurization process validation, export requirements, pesticides, pathogen detection, nutritional labeling, SRM testing, vitamins and allergens. We are accredited to ISO/IEC 17025, the international standard for laboratory competence. Our staff will provide you with the most accurate and precise analytical data necessary to stay ahead in today's business environment.

**INTERNATIONAL WOOD INDUSTRIES : BOOTH 807**

Jeff Warn • [jeff@intlwoodind.com](mailto:jeff@intlwoodind.com)  
250 D Street • Turlock, CA 95380 • 209.632.3300

IWI specializes in serving the California agricultural community. If you need bins, we can build them for you. If you need to repair bins, we are the best source for all your parts, plywood bottoms and sides and all-metal parts, nuts and bolts included. IWI will provide you with the best quality, the best service and the very best pricing available.

**IRRIGATE.NET : BOOTH 1130**

Jarald Davidson • [jaralddavidson@gmail.com](mailto:jaralddavidson@gmail.com)  
1770 Serenity Way • Chico, CA 95928 • 530.520.1645

Serving the North State since 1977. We offer AG Telemetry for the agricultural industry, soil moisture, weather station, frost/high temperature alarms, flow meter data, ground water data, irrigation system monitoring and plant disease models.

**JACKRABBIT : BOOTH 601**

Tim Harms • [tim@jackrabbit.bz](mailto:tim@jackrabbit.bz)  
471 Industrial Avenue • Ripon, CA 95366 • 559.288.6935

JackRabbit nut-handling equipment runs ahead of the herd with cutting-edge design and technology with the fastest, most efficient nut production for today's growers worldwide. An industry leader since 1982, JackRabbit designs and manufactures automated harvest systems, stockpiling elevators and Prune-Rite pruning towers. Feel the need for speed when it matters most. JackRabbit: from the future for today's grower. Nut-handling equipment includes the JackRunner self-propelled shuttle, the new Wedge 10 Reservoir Cart, the new 30/36 Elevator with Woodchuck desticker, YardJack duel 36 stock piling elevator with Woodchuck desticker option, Jack Cart K70 and the new PrepperJack conditioner and Stick Jack pre-harvester desticker.

**JAIN IRRIGATION : BOOTH 1123**

Bethany Stanglin • [bstanglin@jainsusa.com](mailto:bstanglin@jainsusa.com)  
2581 E. Florence Avenue • Fresno, CA 93721 • 559.981.6396

Jain Irrigation is a world-leading manufacturer in microirrigation. Each orchard must have a unique irrigation system that meets several environmental factors. Jain Irrigation is your solution for meeting all your orchard needs, supplying steel filters, fittings, PC emitterline and injectors. Let us make the best of every drop for your crop.

**JENJIL PACKAGING, INC. : BOOTH 1131**

Nick Hackler • [nickhackler@jenjilpackaging.com](mailto:nickhackler@jenjilpackaging.com)  
2242 Maryann Drive • Turlock, CA 95380 • 209.656.9160

JenJil Packaging supplies local growers, packers and processors with corrugated boxes and other various types of supplies. JenJil works with several of the top manufacturers in the country and has a great design team specializing in designing and creating customized boxes and providing you with excellent service. Please stop by to see how you can make JenJil your packaging resource!

**JKB ENERGY GREEN SPONSOR : BOOTH 928**

Bob Hansen • [bob@jkbenergy.com](mailto:bob@jkbenergy.com)  
941 E. Monte Vista Avenue • Turlock, CA 95382 • 209.668.5303

In recent years, JKB Energy has established itself as the leader in agricultural solar installations. As the official Green Sponsor for the Almond Board of California, Almond Hullers & Processors Association and California Citrus Mutual, JKB Energy has the knowledge and skill needed to install high-performance solar systems in any agricultural environment.

**JOHN DEERE : BOOTH 1235**

Cole Earl • [coleearl@johndeere.com](mailto:coleearl@johndeere.com)  
For 176 years, John Deere has been providing confidence to our customers through the quality of our products. Stop by our booth at the 2013 Almond Conference and see our Orchard Tractor lineup and a variety of Gator utility vehicles. We are proud to be a part of the 2013 Almond Conference and look forward to seeing you there.

**KAMPER FABRICATION : BOOTH 929**

Greg Kamper • [greg@kamperfab.com](mailto:greg@kamperfab.com)  
20107 N. Ripon Road • Ripon, CA 95366 • 209.599.7137

Kamper Fabrication, Inc. builds complete almond processing facilities and manufactures equipment lines for almond hulling/shelling, cleaning, sizing, sorting and packaging. Our complete, turn-key almond processing facilities are reliable and easy to operate. Kamper Fabrication processing facilities and machinery are unmatched in durability, efficiency and longevity and withstand the rigors of high-volume processing through decades of harvests. Our excellent reputation worldwide comes from our commitment to customer satisfaction and consistently high-quality products. Stop by our booth to see photos of our installations and videos of our equipment in operation.

**KCI-KINGSBURG CULTIVATOR, INC. : BOOTH 522**

Clint Erling • [clint@kci-mfg.com](mailto:clint@kci-mfg.com)  
40190 Road 36 • Kingsburg, CA 93631 • 559.897.3662

For 40 years, Kingsburg Cultivator, Inc. and KCI-Scheidt nut-harvesting equipment have provided our customers with the most efficient designs possible. From shuttle carts and conveyors to bankouts, our proven shuttle express tractor can be used for your spray rig, spreader or other uses on your ranch. Call us for more information from large to small growers. [www.kci-mfg.com](http://www.kci-mfg.com)

**KEY TECHNOLOGY, INC. BRONZE SPONSOR : BOOTH 519**

Shayla Wentz • [swentz@key.net](mailto:swentz@key.net)  
150 Avery Street • Walla Walla, WA 99362 • 509.394.3344

Key Technology is the global leader in the design and manufacture of process automation systems for the food processing and industrial markets. Key's products provide multiple benefits to almond processors, including reduced operating costs through labor reduction, consistent product quality, optimum yield and increased process control capabilities to optimize efficiency. Based on the principles of innovation, reliability and superior customer service, Key develops next-generation solutions that produce competitive advantages for its customers. Key's digital sorting systems, specialized conveying systems and processing equipment serve the unique needs of almond processors worldwide.

**KLIPPENSTEIN CORPORATION : BOOTH 1133**

Ryan Stewart • [ryan@klippenstein.com](mailto:ryan@klippenstein.com)  
5399 S. Villa Avenue • Fresno, CA 93725 • 559.647.5117

Klippenstein Corporation has been manufacturing custom packaging for the food and almond industry for more than 30 years. We have flexible layouts that integrate almond box formers/erectors, load stations that communicate with your scale, case sealers and box stackers/palletizers. Your packaging needs are our first priority. As your production expands, we can help your operation meet those needs with a fully automated or semi-automated packaging system.



**LIONUDAKIS : BOOTH 1007**Scott Sand • [ssand@lionudakis.com](mailto:ssand@lionudakis.com)

20451 McHenry Avenue • Escalon, CA 95320 • 209.581.4660

We have been the Central Valley's premier provider of orchard removal services for more than 30 years. A locally owned family company with more than three generations of experience in the agricultural services industry (dating back to 1923), we've built Lionudakis Wood & Greenwaste into the largest orchard removal company in the Central Valley of California. We're committed to utilizing the highest-quality equipment and operators to provide the cleanest and most effective service to local farmers. Let us take care of your orchard removal needs.

**LOG5/KOCO : BOOTH 931**Jochem Dekker • [jdekker@log5.com](mailto:jdekker@log5.com)

4 Glenberry Court • Phoenix, MD 21131 • 410.329.2050

Continued research by a team of Log5 experts has resulted in superior nut pasteurization technology. The approach (patent pending) is called Water Activity Controlled Pasteurization (WACP) and allows for precise control over the water vapor absorption and thus provides excellent inactivation and product quality properties. Key to the new design is a modular layout, which allows a continuous process flow, shorter dwell times at precisely controlled temperatures and improved product handling. WACP technology is affordable, easy to implement and available in capacities ranging from 500 to 44,000 lb an hour. The system's small footprint fits within standard building heights.

**MAGNATION WATER AND ENERGY SAVING TECHNOLOGIES****BOOTH 1110**Stef Jenzeh • [stef@moreplant.com](mailto:stef@moreplant.com)

660 4th Street • Oakland, CA 94607 • 888.820.0363

Magnation's water systems are the platinum standard in environmentally friendly, chemical-free, low-maintenance water- and energy-saving technologies that result in sustainable, healthy, high-quality yields. The patent-pending delivery systems use magnetic science to create and deliver soft "rain-like water." Water treated with Big Blue Suite and Rainbolt systems will reduce and prevent scale in pipes and sprinklers and maximize the delivery of water, oxygen and nutrients to your soil and crops. Using these cost-effective systems will result in less water, fertilizer, pesticide and energy consumption resulting in a reduction in operational costs by up to 30%. Visit [MorePlant.com](http://MorePlant.com).

**MANA CROP PROTECTION : BOOTH 606**Ron Thomsen • [rthomsen@manainc.com](mailto:rthomsen@manainc.com)

2111 West Vartikian Avenue • Fresno, CA 93711 • 559.696.7171

MANA Crop Protection—Quality Products, Competitive Prices. MANA's proven insecticides, fungicide, herbicides, PGRs and harvest aids are manufactured to the highest standards and value priced to optimize a farm's profitability. MANA provides best-in-class formulations, regulatory capabilities, extensive field testing and research, and a science-based approach to defend and maintain vital active ingredients. Our area business management teams throughout the U.S. support the distributors, retailers, crop consultants and agronomists who are part of the supply chain that today's producers and farm managers rely on for localized expertise.

**MARRONE BIO INNOVATIONS : BOOTH 810**Neal Job • [njob@marronebio.com](mailto:njob@marronebio.com)

2121 Second Street • Davis, CA 95618 • 530.302.8217

Marrone Bio Innovations (MBI) discovers, develops and markets effective and environmentally responsible products that fill unmet needs for plant disease, weed and invasive pest management. MBI currently markets Regalia® biofungicide and Grandevo® bioinsecticide, both Agrow Award-winning products. Regalia® offers control against Brown Rot Blossom Blight, Shot Hole and Anthracnose while Grandevo® is an advanced cross-spectrum insecticide, offering almond growers proven protection against pests such as peach twig borer, navel orange worm and mites. Both products have 4-hour REI and 0-day PHI and are tolerance exempt from EPA MRL regulations. For more information, visit [www.marronebio.com](http://www.marronebio.com).

**MID-PACIFIC INDUSTRIES, INC. : BOOTH 801**Randy Sohn • [randy.sohn@mid-pac.com](mailto:randy.sohn@mid-pac.com)

1500 Case Place • Woodland, CA 95776 • 530.661.6777

Mid-Pacific Industries, Inc. was established in 1970 and is the only dealer in the U.S. that dedicates 100% of its business to yard trucks. Known for our expertise and customer satisfaction, Mid-Pacific Industries will be there whenever assistance is needed. We have a fully stocked warehouse of parts, mobile service technicians, dependable rental department and knowledgeable sales staff. Over 100 new, used and rental yard trucks are available. Our entire fleet of trucks is C.A.R.B. compliant. For a complete list of sale and rental yard trucks, visit [www.mid-pac.com](http://www.mid-pac.com). At Mid-Pacific, YOUR yard truck is OUR business.

**MODERN PROCESS EQUIPMENT, INC. : BOOTH 905**Sallie Coronado • [sallie@mpcechicago.com](mailto:sallie@mpcechicago.com)

3125 S. Kolin Avenue • Chicago, IL 60623 • 773.242.2922

Founded in 1957 with worldwide headquarters in Chicago, Modern Process Equipment is the undisputed leader in the design and manufacture of size reduction and related processing equipment. MPE manufactures the Chain-Vey conveyor that is specifically designed for the gentle transport of food and bulk powder products at distances of up to 200 feet with minimal product degradation. Other benefits include its flexible design (combines horizontal and vertical transport in one system), CIP (clean in place) capabilities and energy efficiency.

**MOISTTECH : BOOTH 910**Adrian Fordham • [afordham@moisttech.com](mailto:afordham@moisttech.com)

5140 Commerce Avenue • Moorpark, CA 93025 • 954.734.3082

MoistTech manufactures a range of online sensors and at-line instruments for moisture measurement and real-time moisture process control. IR3000 is considered by many as being the flagship and unmatched performance for moisture measurement and control within all levels of the nut industry to within 0.05% accuracy. Experience in the nut process has allowed MoistTech to develop the most accurate moisture analyzer for use in processing and nut applications. These sensors are unaffected by product height, flow, ambient light and temperature and are renowned for their rugged design and ability to withstand the harsh environments of the process.

**NAPOSOL : BOOTHS 911, 913**Kari Graber • [kari.graber@napasol.com](mailto:kari.graber@napasol.com)

505 N. Broadway, Suite 208 • Fargo, ND 58102 • 701.478.3020

Napasol produces custom-designed pasteurization and sterilization equipment for low-moisture products, including tree nuts, dried fruit, herbs, spices, seeds and more. The novel steam-vacuum technology offers a pasteurization process that is validated to provide a minimum 5-log reduction of pathogens. Product quality is maintained through precise control of the environment during the process. Napasol system advantages include • Short cycle time • Lower treatment temperatures in pressurized vessel • No chemicals, suitable for organic • Easy to clean • Compact modular systems • Large-volume capabilities • Fully automated process flow • Achieved Almond Board of California Proof of Principle.

**NATPROCESS : BOOTH 1126**Nicolas Braun • [nicolas.braun@natprocess.com](mailto:nicolas.braun@natprocess.com) • 10 Avenue du Général de Gaulle • Saint-Louis, Haut-Rhin, France 68300 • 33.695.440.877

NEW continuous steam pasteurization process, STERISTEP for almonds, pistachios, seeds and nuts. NEW roasting process, "TS;" for cocoa, coffee, nuts. Also see our seed grain cleaning lines and our sorter and color sorter.

**NELSON MANUFACTURING COMPANY, INC. : BOOTH 817**Jim Bennett • [jimb@nelsonhardie.com](mailto:jimb@nelsonhardie.com)

2860 Colusa Highway • Yuba City, CA 95993 • 530.673.0919

Nelson Mfg. Co., Inc. manufactures high-performance Nelson Hardie orchard sprayers, the ROPS-approved Nelson Orchard Cab for low-profile orchard tractors and the smooth-action Nelson Tree Squirrel orchard pruning towers.

**NETAFIM USA : BOOTH 1106**Maureen Nassie • [mnassie@netafimusa.com](mailto:mnassie@netafimusa.com)

5470 E. Home Avenue • Fresno, CA 93727 • 559.253.2548

Netafim USA manufactures the widest selection and most advanced drip/microirrigation products for almond growers. Products include driplines, valves, filters, air vents and automation. We offer products and solutions to help you Grow More with Less. For more information, visit [www.netafimusa.com](http://www.netafimusa.com).

**NUTRIENT TECHNOLOGIES : BOOTH 612**Kirk Anderson • [ntkirk1@verizon.net](mailto:ntkirk1@verizon.net)

2079 Woodbine Avenue • Manteca, CA 95337 • 209.380.2942

Nutrient Technologies is a manufacturer of foliar nutrients. We specialize in micronutrients and have a wide range of formulations that are readily available. We sell our products under the Tech-Flo, Tech-Spray and Tech-Gro labels. Please contact your PCA for more information. You can also visit us at booth #612.

**NUTSTAR SOFTWARE : BOOTH 515**Gerrit Dorrepaal • [gerrit@nutstar.net](mailto:gerrit@nutstar.net)

2925 Niagra Street, Suite 6 • Turlock, CA 95382 • 209.250.1324

NutStar Software is providing software solutions for the nut industry to assist in inventory, sales and grower purchases. Software is available for huller shellers and processors.

**ONFARM SYSTEMS : BOOTH 1125**Lance Donny • [lance@onfarmssystem.com](mailto:lance@onfarmssystem.com)

4969 E. Clinton Way, Suite 102 • Fresno, CA 93727 • 559.352.6023

OnFarm is the first cloud-based software that integrates agriculture hardware and data solutions from nearly any company in a single-decision support system. Vital agronomic information—soil, plant, mapping, atmospheric, operational and equipment controls—is accessible in the office or the field on nearly any device. OnFarm's users see increased productivity, better decision making, and improved profits by maximizing inputs such as nutrients, water, labor and energy.

**ORCHARD MACHINERY CORPORATION : BOOTH 633**Andrew Robinson • [jm@shakermaker.com](mailto:jm@shakermaker.com)

2700 Colusa Highway • Yuba City, CA 95993 • 530.673.2822

Shock Wave by Orchard Machinery Corporation is the world's leader in manufacturing of almond-harvesting equipment. The Shock Wave shakers feature the patented F.A.S.T. (Fully Automated Shaking Technology) and Air Pas systems. The F.A.S.T. system guarantees: (1) uniform shaking, (2) minimum damage and (3) 20% reduction in fuel consumption. The new OMC aftershock material handling line features a state-of-the-art ground drive system and air ride suspension. Wesco by OMC features the Almond Super Hopper trailer line.

**ORO AGRI, INC. : BOOTH 816**Sam Tekunoff • [stekunoff@oroagri.com](mailto:stekunoff@oroagri.com)

3816 S. Willow Avenue, Suite 101 • Fresno, CA 93725 • 559.442.4996

ORO AGRI develops, manufactures and distributes patented products for various agricultural and commercial applications. These products fall under the organic or environmentally friendly categories and are manufactured and distributed internationally. Depending on the registration per country, ORO AGRI pesticide products either have no or very short re-entry and pre-harvest intervals and are an advantage in meeting residue requirements for produce.

**P&F METALS : BOOTH 809**Ed Parker • [eparker@pfmtals.com](mailto:eparker@pfmtals.com)

301 South Broadway • Turlock, CA 95380 • 209.667.2515

P&F Metals is a licensed general engineering and mechanical contractor located in Turlock, California. Established in 1956, P&F Metals has provided high-quality metal fabrication and millwright services for industrial, agricultural and food processing communities. P&F Metals' facility houses a full complement of metal fabricating equipment, including a CNC plasma-cutting station. Our fully equipped field crews operate out of permanent locations in both central and southern California. P&F Metals maintains a dynamic safety program designed to ensure compliance with safety practices associated with our trade. Our insurance coverage meets or exceeds the standards established for our industry.

**P2G, PROGRESSIVE GENETICS GROUP : BOOTH 323**Jack Poukish • [jack@sgtrees.com](mailto:jack@sgtrees.com)

1555 Baldwin Road • Hughson, CA 95326 • 530.674.1145

P2G, Progressive Genetics Group, is an alliance of four California tree nurseries dedicated to the development and introduction of improved rootstocks for almonds and other orchard crops. Through the nurseries of P2G, rootstocks such as Krymsk® 86, Bright's Hybrid® 5 and Empyrean® 1 are delivering real solutions to increased almond yields and orchard health.

**PACIFIC SOUTHWEST IRRIGATION CORPORATION : BOOTH 506**Jim Clare • [jclare@pacsouthwestirr.com](mailto:jclare@pacsouthwestirr.com)

8372 S. Jack Tone • Stockton, CA 95215 • 209.986.0099

Pacific Southwest Irrigation Corp. is a full-service irrigation dealer/contractor serving the Southern Sacramento and Northern San Joaquin Valleys. Irrigation and pump station design and installation are serviced by field workers trained and qualified to provide economic, practical and efficient projects for long term. With both a pump division and a rental division, we fabricate many of the structures we design into our projects. Whether turn-key, parts only, repair and service, complex or simple problem solving, we have unique experience and are quick and professional. Licensed general engineering contractor and owner Jim Clare, outside field engineers and a large service staff are available Monday–Saturday, Sunday emergency.

**PACIFIC WESTERN CONTAINER : BOOTH 421**Tim Bynon • [tbynon@pacificwestern.com](mailto:tbynon@pacificwestern.com)

7044 W. Garry Avenue • Santa Ana, CA 92704 • 714.742.0755

Tree Protector: for all newly planted fruit, nut, avocado or citrus orchards. Tree Protectors are essential for strong, healthy trees. What a Tree Protector does for a young tree: creates an individual greenhouse-like effect for each tree; maintains even moisture to encourage faster, healthier growth; protects against natural elements, predators and herbicide spraying.

**PATTYN NORTH AMERICA, LLC : BOOTHS 1127, 1129**Lars Nielsen • [lars.nielsen@pattyn.com](mailto:lars.nielsen@pattyn.com)

N76 W30500 City Road • Hartland, WI 53029 • 262.613.5901

Pattyn North America, LLC is the North American division of Pattyn Packing Lines, a family company located in Bruges, Belgium, with more than 30 years' extensive experience in polybag lining solutions. We help you achieve your business goals: automation of the complete packaging process, reduction of your consumables cost and an increase in your current packaging capacity. We integrate standalone machines or complete automated lines, from case erecting, bag-making, inserting and filling, to bag and case closing, along with developing full turn-key systems. Pattyn North America, LLC has its headquarters in Hartland, Wisconsin.

**PBM SUPPLY & MFG., INC. : BOOTH 604**Steve Vance • [svance@pbmsprayers.com](mailto:svance@pbmsprayers.com)

324 Meyers Street • Chico, CA 95928-7175 • 530.345.1334

Not your average equipment manufacturer, PBM has decades of experience in creating custom spray equipment, tank trailers and other custom equipment built to order to suit individual customer needs. We pride ourselves on our craftsmanship. Where most manufacturers focus on mass production and profit, PBM focuses on delivering an excellent, lasting product tailored to customer needs at a reasonable price. Our sprayers and tank trailers are built with the best-quality components to make certain that downtime is minimal and that parts are readily available. We offer a multitude of options in order to meet the specific needs.

**PLANT FOOD SYSTEMS, INC. : BOOTH 414**Mark Brady • [mbrady@plantfoodsystems.com](mailto:mbrady@plantfoodsystems.com)

3330 W. Victor Court • Visalia, CA 93277 • 559.731.1267

Plant Food Systems is an innovator of premium plant nutrition and protection products, pioneering new products and methods that have shaped the fruit, vegetable and field crop industries.

**POLYMER AG, INC. : BOOTH 221**Mark Hendrixson • [mark@polymerag.com](mailto:mark@polymerag.com)

P.O. Box 282 • Orange Cove, CA 93646 • 559.495.0234

The world leader in polymers for use on crops during periods of climate-related stress. Anti-Stress 550 is a foliar-applied polymer concentrate that reduces moisture loss and damage from frost/freeze, high heat, water stress, transplant and transportation shock.

**PROCESSES UNLIMITED INTERNATIONAL, INC. : BOOTH 1014**Leah Headrick • [lheadrick@prou.com](mailto:lheadrick@prou.com)

5500 Ming Avenue, Suite 400 • Bakersfield, CA 93309 • 661.885.3019

Processes Unlimited International, Inc. (ProU) provides multidiscipline engineering, planning, design, project management, panel fabrication and safety services to our clients. The engineering disciplines include process, mechanical, chemical, civil, structural, instrumentation, automation and controls. Projects range from 40 to 100,000 hours with a median of 450 hours. ProU has six locations nationwide, as well as a joint venture in Chennai, India. Multiple office locations include Bakersfield, Fresno, San Ramon and Pasadena, California; Dallas, Texas; Atlanta, Georgia; and Kingdom of Bahrain. ProU has enjoyed more than 15 years of success in the almond and tree nut industry.

**PROJECT APIS M. : RESEARCH POSTER AREA 77**Christina Heintz • [christih@cox.net](mailto:christih@cox.net)

P.O. Box 3157 • Chico, CA 95927 • 520.834.2832

Project Apis m. (PAm) has evolved to be the go-to organization at the interface of honey bees and almonds. PAm has infused over \$1.5 million into bee research since its inception in 2006 to provide growers with healthier bees and better pollination. We have broad-based support among beekeepers and growers of pollinated crops. PAm has leveraged stakeholder funds to obtain grants from CDFA, North Dakota Department of Agriculture, Monsanto and Costco. Stop by our booth to see how YOU can help provide additional forage diversity for honey bees.

**QUALITECH, INC. : BOOTH 1116**Mary Vogel • [maryv@qualitechco.com](mailto:maryv@qualitechco.com)

318 Lake Hazeltine Drive • Chaska, MN 55318 • 209.620.0128

Plants and growers get more from Carbomin®. Proven uptake ensures growers get the most from their nutrients. With Carbomin's unique carbohydrate technology, plants utilize nutrients where they are needed to correct deficiencies, allowing them to maximize their potential. Key advantages of Carbomin technology are effective, translocates, compatible and safe. Carbomin's technology also protects each nutrient, making Carbomin compatible in a broad spectrum of fertilizer/pesticide blends. The Carbomin line includes calcium, copper, iron, manganese, magnesium, zinc and boron. For more information, please visit [www.qualitechco.com](http://www.qualitechco.com) or contact your local CPS representative.

**RAIN BIRD : BOOTH 1111**Bulut Ersavas • [bersavas@rainbird.com](mailto:bersavas@rainbird.com)

970 W. Sierra Madre Avenue • Azusa, CA 91702 • 626.812.3822

Rain Bird is the leading manufacturer and provider of irrigation products and services. Since its beginning, Rain Bird has offered the industry's broadest range of irrigation products for farms, golf courses, sports arenas, commercial developments and homes in more than 130 countries around the world. Rain Bird has been awarded more than 130 patents, including the first in 1935 for the original horizontal action impact drive sprinkler (U.S. Patent #1,997,901), which revolutionized the food production industry and ushered in a new era in irrigation worldwide.

**RAIN FOR RENT : BOOTH 224**Anna Porter • [aporter@rainforrent.com](mailto:aporter@rainforrent.com)

11035 NE Marx • Portland, OR 97220 • 503.415.1547

Rain for Rent is a leading provider of temporary liquid handling solutions, including pumps, tanks, filtration and spill containment. Projects range from flood relief to construction site dewatering, sewer bypasses and industrial plant turnarounds. The company is known for its systems engineering expertise and its ability to tackle complex jobs cost effectively, providing an exceptionally high value. Family owned and operated since 1934, it serves all 50 states and Canada from over 60 locations.

**RANCH SYSTEMS : BOOTH 1114**Jay Brown • [jay@ranchsystems.com](mailto:jay@ranchsystems.com)

37 Commercial Boulevard, Suite 101 • Novato, CA 94949 • 415.827.7880

Ranch Systems is a technology company focused on providing monitoring and control solutions for growers based on its patented wireless telemetry and web-based software. The technology is unique in terms of its flexibility, modularity and the breadth of possible solutions: from a single soil-moisture station to sophisticated meshed networks for monitoring and controlling the irrigation operations of 1000s of acres of almonds, while including options like remote camera surveillance and access control. Ranch Systems solutions are accessible anytime, anywhere with a smartphone, tablet or computer. Ranch Systems is an established leader in the California market.

**REARS MANUFACTURING : BOOTH 318**Jim Goddard • [rearsrep@digitalpath.net](mailto:rearsrep@digitalpath.net)

2140 Prairie Road • Eugene, OR 97402 • 541.688.1002

Rears Manufacturing is a family business directed by a second and third generation of Rears. We are a flexible manufacturer of specialized, heavy-duty orchard equipment: PTO and engine-driven air-blast sprayers; PTO, hydraulic and engine-driven ground-application sprayers; PTO and engine-driven flail mowers and brush shredders; in-row hydraulic-drive grass mowers and brush sweepers; spray booms with stainless steel drift-control hoods for full broadcast and berm-spray applications.



**RECOLOGY : BOOTH 1224**

Aaron Rumble • dramsey@recology.com  
P.O. Box 128 • Westley, CA 95387 • 209.545.7718

At Recology Grover Environmental Products, we recognize the value of soil health and the fundamental link between fertile soils, plant health and nutritious food. We understand that if high-quality food is to be harvested for our families' consumption, such produce will only be grown on healthy soils, biologically active with sufficient levels of essential minerals. As stewards of one of our most precious resources, our soil, we are dedicated to building soil quality.

**RED BARN/PROGRESSIVE AG SPRAYERS/NORTHWEST TILLERS, INC. BOOTH 433**

Dan DeJong • judy@redbarneq.com  
P.O. Box 969 • Salida, CA 95368 • 209.545.2453

Red Barn Equipment Sales is a stocking dealer, providing sales, parts and service for Northwest Tillers, LectroBlast Sprayers, Deutz Fahr Tractors, Midwest Bio-Systems, KCI Harvest Equipment, Vrisimo Mowers, and DuraTech/Haybuster Equipment. Red Barn Equipment has units in stock for demonstration and sale. Northwest Tillers builds a rugged, high-quality tiller in Yakima, Washington. This tiller incorporates shredded prunings, levels and rolls the orchard or vineyard floor firmly without causing compaction at 3-4 MPH! Progressive Ag Sprayers offers manufacturing, service and sales of LectroBlast Electrostatic Agricultural Sprayers. New lines include a new engine-driven sprayer and new LectroSense Technology.

**REDOX CHEMICALS, LLC : BOOTH 616**

John Kelly • johnk@redoxchem.com  
130 S 100 W • Burley, ID • 83318 • 208.678.2610

Redox Chemicals is a specialty nutrient company, focusing on innovative plant growth technology. Redox incorporates nine distinct types of soluble carbon chemistry with plant nutrients to dramatically improve plant uptake, input efficiency, and crop result. These components function by protecting and facilitating nutrient delivery to the plant. 1-Mannitol, 2-Fulvic Acid, 3-Humic Acid, 4-Soluble Carbon Complex, 5-VMC Surfactant,6-Microencapsulation Surfactant, 7-Black Walnut, 8-Willow and 9-L-Amino Acids.

**REVTECH : BOOTH 1112**

Helene Bulteau • helene.bulteau@revtech.fr • PA Champgrand 50 Allée Des Abricotiers • Lorient sur Drome, France 26270 • 33.475.601.633

Revtech designs and manufactures continuous pasteurization and roasting systems for almonds, with flow rates from 500 to 20,000 pounds per hour. The technology combines gentle vibrational transport with dry electrical heating followed by a short minimal exposure to steam. Almonds are continuously pasteurized with no change in appearance or taste. Tests, following the ABC protocol and independently confirmed by Campden BRI laboratory, proved a complete eradication of Salmonella corresponding to an 8.2-log kill. Revtech achieved Proof of Principle, and units can be certified by the ABC.

**RF BIOCIDICS : BOOTH 933**

Crystal Orton • crystal.orton@rfbiocidics.com  
830 Eubanks Drive, Suite D • Vacaville, CA 95688 • 702.466.7143

RF Biocidics is a food commodity treatment company focused on making food safer for consumers by providing an environmentally friendly, chemical-free, organic alternative for pasteurization and disinfection. The Apex and Sentinel systems consistently achieve reliable pathogen control, high throughput efficiency and cost effective performance without the limitations of steam treatment or external heating. Our systems offer quick, convenient treatment with no change to sensory, nutritional or functional values. In addition to the sale or lease of systems, our in-house treatment service group provides a vehicle for customers to utilize this revolutionary process, ensuring enhanced food safety.

**ROBERTS RETIREMENT GROUP : BOOTH 1204**

Ron Roberts • roberts@robertsretirement.com  
11992 W. Highway 88, Suite 2040 • Jackson, CA 95642 • 702.496.2859

Family-focused financial planning, we work with families to help build, protect and pass on their family wealth, values and purpose. Our services include comprehensive tax planning, wealth accumulation, estate planning, asset protection, legacy planning, life insurance and retirement planning.

**SAN JOAQUIN SYSTEMS : BOOTH 1019**

John Dyrseth • john@sjsystems.com  
1905 Bartley Court • Modesto, CA 95355 • 209.577.4514

San Joaquin Systems represents manufacturer Triple/S Dynamics, home of the Texas Shaker Screeners, Slipstick Differential Motion Conveyors, Detwiggers, and Sand/Stick Separators. We have been instrumental in implementing the following Triple/S Dynamics concepts into the almond industry: (1) slipstick conveyors for receiving almonds in pre-cleaners, (2) vibrating screen conveyors for hull/meat scalping, (3) screening of fine shell fragments to reduce fiber content of hulls, (4) development and implementation of sand/stick separator to replace stick reels in almond pre-cleaners (5) designed and implemented meat recovery system from hulls.

**SATAKE COPPER SPONSOR : BOOTH 719**

Jeff Sargent • jsargent@satake-usa.com  
1055 Reno Avenue • Modesto, CA 95351 • 209.551.3203

Satake USA's 2012 Evolution RGB full-color sorting machine features fully digital image processing, enhanced 3-D sorting programs, LED illumination, high-resolution full-color cameras, intuitive GUI, high-density 5 mm ejector system, increased capacity and internet connectivity to support Satake Everywhere. Evolution is setting new standards in sorting performance for many almond sorting applications. ScanMaster II DE is the industry standard for huller in-shell almond sorting operations. This proven technology utilizes InGaAs IR technology to detect FM and visible wavelength technology to detect stain. Evolution and ScanMaster II DE are manufactured at Satake's Houston, Texas, facility.

**SCHABEN INDUSTRIES : BOOTH 514**

Jose Maldonado • jose.maldonado@schabenindustries.com  
4450 State Road • Bakersfield, CA 93308 • 661.391.9081

Schaben Industries is a sprayer manufacturer and a liquid handling product distributor located in Bakersfield, California. We also manufacture nurse trailers ranging in capacity from 300 gallons up to 2,000 gallons. We can customize any of our existing products to fit your needs. We pride ourselves on great customer service and great quality work of our products. We are also a distributor of poly storage tanks with a capacity of up to 20,000 gallons.

**SCHUIL & ASSOCIATES, INC. : BOOTH 325**

Arnel Koster • arnel@schuil.com  
5020 W. Mineral King Avenue • Visalia, CA 93291 • 559.734.1700, Ext. 108

Schuil & Associates is located right in the middle of the highly productive agricultural area of the Central Valley. Our dedicated real estate staff is ready to assist you with any real estate needs, including permanent plantings, dairies, row crops or any other agricultural land sale.

**SELECT HARVEST USA : BOOTH 614**

Sheryl Wheeler • swheeler@selectharvestusa.com  
14827 W. Harding Road • Turlock, CA 95380 • 209.668.2471

Select Harvest U.S.A. is a Grower \* Processor \* Shipper \* of California in-shell and natural whole almonds. In 2008, Spycher Brothers and North Valley Nut partnered to provide clientele with California's largest selection of almond meats and in-shell products under the Select Harvest name, with a combined grower base that spans the entire state, Select Harvest supplies worldwide markets with all varieties of whole natural California Almonds. Both companies are committed to Select Harvest's focus on excellence in quality control and customer service.

**SIERRA GOLD NURSERIES : BOOTH 220**

Jack Poukish • jack@sgtrees.com  
5320 Garden Highway • Yuba City, CA 95991 • 530.674.1145

Providing top orchardists with quality almond, walnut, pistachio and fruit trees since 1951, Sierra Gold is a full-service nursery, providing growers with on-site service and ranch delivery from our local field representatives. All major almond varieties grown on traditional rootstocks, such as Nemaeguard, Lovell, Marianna 26-24, Titan peach/almond hybrid, Hansen 536 hybrid, and the new, advanced, clonal rootstocks, Krymsk 86 and Bright's Hybrid 5. Almond trees are available, both bareroot and potted. For a Harvest of Gold, Plant Sierra Gold!

**SIERRA VALLEY ALMONDS : BOOTH 1011**

Dean Nelson • dnelson@svalmonds.com  
12828 Road 26 • Madera, CA 93637 • 559.662.8900

Sierra Valley Almonds is dedicated to providing exceptional service to our growers and buyers. We consistently provide industry-leading returns to our growers, while delivering quality products to our global customers. Whether you seek pool or call sales, our team is here to assist you with a concise grower reporting system and provide timely market information. With state-of-the-art facilities, our operations team attends to every detail, ensuring that your crop yields achieve the best possible return. Sierra Valley Almonds has a reputation for integrity and consistently producing quality products, which has resulted in recognition as a premier brand.

**SIMPLOT GROWER SOLUTIONS : BOOTH 818**

David Genzoli • david.genzoli@simplot.com  
6812 E. Grayson Road • Hughson, CA 95326 • 559.824.0873

The J.R. Simplot Company is one of the largest privately held food and agribusiness companies in the nation, though at heart, we're as small as a single farmer. We pioneer innovations in plant nutrition and food processing, research new ways to feed animals and sustain ecosystems and strive to feed a growing global population. At Simplot, we're in the business of Bringing Earth's Resources to Life.

**SOIL BASICS CORP. : BOOTH 516**

Julie Sannar • julie@soilbasics.com  
10747 W Goshen Avenue • Visalia, CA 93291 • 559.651.2772

**SPAN CONSTRUCTION & ENGINEERING, INC. • BOOTH 418**

Mark Reynolds • markr@spanconstruction.com  
1841 Howard Road • Madera, CA 93637 • 559.661.1111

Span Construction and Engineering, Inc. is the nation's leader in the metal construction industry. Span has built a wide variety of structures for agricultural, industrial, commercial, aviation and recreational clients. Founded in 1979, Span Construction has been a very different kind of company: service oriented with a professional, team-driven approach. Using pre-engineered steel building systems, Span has built throughout the U.S., Canada, Mexico and internationally. Why not make Span a part of your team for your next facility project? Visit www.spanconstruction.com or call 559.661.1111.

**SPECTRUM TECHNOLOGIES : BOOTH 1103**

Tara Longshore • tlongshore@specmeters.com  
12360 S. Industrial Drive E • Plainfield, IL 60585 • 815.436.4440

Spectrum Technologies is a global leader in weather monitoring, plant health, irrigation, nutrient management and IPM technology. Our Cellular Frost Alert warns growers of approaching frost conditions miles away that could damage crops. Watchdog 2000 Series Weather Monitoring Stations allows growers to measure wind speed, air temperature, rainfall and solar radiation (plus more) with options to plug in up to eight external sensors that can read and help with irrigation, nutrient and IPM pest-management decisions. Over 15 station and logger choices are available. Users can choose the system that best fits their growing needs and budget. Spectrum has received 19+ AE50 awards for product ingenuity.

**STANISLAUS IMPLEMENT & HARDWARE : BOOTH 918**

Rob Fassett • rfassett@holtca.com  
526 Tenth Street • Modesto, CA 95354 • 209.380.9860

Stanislaus Implement has been serving the agricultural industry and homeowners in Stanislaus, Merced and San Joaquin counties since 1919. Today, we sell new and used Massey Ferguson tractors and farm equipment, as well as Polaris ATVs and utility vehicles. We also provide a wide selection of parts for all the products we have offered over the years, including an extensive selection of agricultural implements from multiple brands. And as part of our commitment to be a one-stop farm center for our customers, our service department will help you get back up and running when you need it. Visit us online at www.stanislaus-implement.com for more information.

**STERILIZATION AND FUMIGATION SERVICES : BOOTH 805**

Bill Lanning • blanning@bioreduction.com  
3500 Shiells Road • Newman, CA 95360 • 208.896.5331

Our proprietary H2O Express process is a low-temperature, low-pressure steam-based pasteurization system. This patented process utilizes newly developed technology that facilitates rapid penetration of steam and transfer of heat throughout the materials being pasteurized. Pasteurization is done in the final packaging to ensure a safe product for your customer.

**SUN HARVEST, INC. : BOOTH 1107**

Robert Maragliano • gabby.bsafe@orchardservice.com  
P.O. Box 127 • Walnut Grove, CA 95690 • 209.481.7564

Sun Harvest, Inc. provides the most versatile mechanical pruning equipment. Each piece of equipment was designed to fit the special requirements of the growers. Robert Maragliano has worked closely with the equipment manufacturers to ensure that specifications meet grower demand, even when it requires innovative modifications to existing machinery. The custom-designed equipment allows for extended reach, high angle hedging, high topping and very narrow hedging.

**SUNBURST PLANT DISEASE CLINIC : BOOTH 327**

Edgar Perez • eperez@sunburstpdinc.com  
677 E. Olive Avenue • Turlock, CA 95380 • 209.620.9372

Pathogen lab diagnostics and crop consulting. We specialize in nut, vine and vegetable crops.

**SUREHARVEST : BOOTHS 1008, 1010**

Sandy Connolly • scilifton@sureharvest.com  
2901 Park Avenue, Suite A2 • Soquel, CA 95073 • 831.477.7797, Ext. 204

At SureHarvest, we help you integrate sustainability into your day-to-day business operations. Clients span the agrifood value chain and benefit from SureHarvest's market-leading expertise and experience working with growers, packers/shippers, processors, wineries and trade associations. SureHarvest applies a business process approach, the five Ps of Sustainability, as the principal strategic framework to the much more variable conditions of farming, harvest logistics and packing/shipping.

**SUTERRA, LLC : BOOTH 815**

Nathaniel Bliss  
20950 N.E. Talus Place • Bend, OR 97701 • 866.326.6737

Suterra is the world's leading provider of biorational-based insect control products, offering organic, eco-friendly, and cost-effective solutions for crop protection and commercial applications.

**SYNGENTA PLATINUM SPONSOR : BOOTH 924**

Greg Dickinson • greg.dickinson@syngenta.com  
4178 Douglas Boulevard, Suite 140 • Granite Bay, CA 95746 • 916.783.1834, Ext.1602

Syngenta is one of the world's leading companies with more than 26,000 employees in over 90 countries dedicated to our purpose: bringing plant potential to life. Through world-class science, global reach and commitment to our customers, we help to increase crop productivity, protect the environment and improve health and quality of life. For more information about us, please go to www.syngenta.com.

**TETRA TECHNOLOGIES : BOOTH 1122**

Jeff Gates • jgates@tetratec.com  
113 Timbermill Lane • Edwardsville, IL 62025 • 618.567.4732

Tetra Technologies, Inc. is one of the world's largest producers of calcium chloride liquid and dry products for agriculture, food industries and a variety of industrial applications. Tetra has been supplying high-purity liquid and dry formulations to agricultural consumers since the early 1980s. Agricultural uses for calcium chloride include fertilizer benefits from both calcium and chloride and the enhanced stabilization and increased efficiencies of applying nitrogen fertilizers. Liquid calcium chloride is an excellent soil and water amendment that is very easy to handle and apply. When used in this manner, calcium chloride will remove harmful sodium buildups and increase water intake.

**THE NURSERY COMPANY : BOOTH 231**

Josh de la Torre • josh@thealmondcompany.com  
22648 Road 9 • Chowchilla, CA 93610 • 559.232.8882

The Nursery Company specializes in growing the highest-quality almond and walnut trees in the trade. Our rootstock selection includes Nemaeguard, Nemade, Lovell, Marianna 26-24 and a wide selection of peach-almond hybrids, including Hansen 536, GT-2, GT-3. The Nursery Company is committed to providing the highest-quality trees in the trade, combined with excellent service and always at the right price.

**TOMRA SILVER SPONSOR : BOOTH 427**

Darren Murphy • darren.murphy@bestsorting.com  
4038 Seaport Boulevard • West Sacramento, CA 95691 • 916.371.0700

TOMRA Sorting Solutions. ODENBERG & BEST the preferred supplier of sorting, peeling and process analytic solutions worldwide, offers a wide range of applications for whole, partial, sliced and diced fruits, vegetables and dried fruit, nuts, meat and seafood. Customers have access to a comprehensive service network, ensuring a timely response as well as access to eight demonstration centers where they can test their own products to validate our solutions meet their specific requirements with more than 30 years of experience, ODENBERG and BEST provide customers an integrated approach maximizing yield, quality and efficiency, collecting real-time information from farm to fork.

**TRIPLE/S DYNAMICS : BOOTH 1017**

Celie Reid • creid@sssynamics.com  
1031 S. Haskell Avenue • Dallas, TX 75223 • 214.828.8657

Triple/S Dynamics, with over a century of applications experience, is a leading manufacturer of conveying, screening and separating equipment for the processing industries. Through our partner San Joaquin Systems, Triple/S Dynamics has been providing equipment to the California Almond industry for more than 40 years. Our diverse product line, tailored for the strenuous demands of almond processing, includes Texas Shaker® Screeners, Slipstick® Conveyors, Natural Frequency Vibrating Screen Conveyors and Sand/Stick Separators.

**TURKHAN FOODS : BOOTH 1027**

Ben Villines • accounts@turkhanfoods.com  
17641 French Camp Road • Ripon, CA 95366 • 209.982.9933

Turkhan Foods was founded in 2007 as a trading company, only to expand in 2010 to a processor of both California Almonds and walnuts. Although a young company, there is a rich family history in the agriculture industry dating back to 1945 with a 40-acre pistachio orchard in Turkey. Established with trade relations in more than 30 countries across five continents, Turkhan Foods has grown substantially since establishing themselves in Ripon, California. They are dedicated to building lasting relationships within the industry by providing quality products that meet or exceed the customers' expectations, while providing profitability to our growers.

**UNIVERSITY OF CALIFORNIA, AGRICULTURE AND NATURAL RESOURCES RESEARCH POSTER AREA 80**

Cynthia Kintigh • cckintigh@ucanr.edu  
2801 2nd Street • Davis, CA 95618 • 530.754.3911

University of California, Agriculture and Natural Resources (UCANR) delivers healthier food systems, healthier environments and healthier Californians. From more bountiful berries to cleaner water, UCANR is the bridge between local issues and the power of UC research. UCANR advisors, specialists and faculty work hand in hand with industry professionals to enhance agricultural markets, address environmental concerns, protect plant health and provide farmers with scientifically tested production techniques. With more than 300 peer-reviewed and field-tested publications, UCANR is your go-to source for science-based solutions. Learn more about UCANR publications at anrcatalog.ucanr.edu.

**UPI : BOOTH 1109**

Jason Miller • jason.miller@uniphos.com  
1865 Herndon Avenue, Suite K #224 • Clovis, CA 93611 • 559.269.0662

**VALENT USA : BOOTH 505**

Robin Malm • rmalm@valent.com  
1108 Westway Drive • Woodland, CA 95695 • 530.304.9678

Valent USA, headquartered in Walnut Creek, California, develops and markets products in the U.S. and Canada that protect agricultural crops, enhance crop yields, improve food quality, beautify the environment and safeguard public health, including a well-known line of quality herbicides, insecticides, plant growth regulators, fungicides and seed protection products for agricultural and professional use. We specialize in marketing and sales of biorational and traditional chemical products and are a leading crop protection firm serving the agricultural and non-crop products markets in North America. Valent has a broad and growing line of innovative fungicides, herbicides, insecticides and plant growth regulators. www.valent.com.

**VALLEY TOOL & MFG CO, INC. : BOOTH 713**

Vaughn Brenda • v Vaughn@valleytoolmfg.com  
P.O. Box 220 • Hughson, CA 95326 • 209.883.4093

Based in California, Valley Tool Manufacturing builds orchard flail mowers and shredders. We are also an innovator of the electrostatic orchard/vineyard sprayer by Windmill Spraymaster.

**VERDEGAAL BROTHERS, INC. : BOOTH 1005**

Jim Gregory • jgregory@verdegaalbrothers.com  
13555 S. 11th Avenue • Hanford, CA 93230 • 559.582.9205

High bicarbonates and high pH irrigation waters are issues with water quality and often limit crop productivity. Lowering the pH with an acid improves water quality in these conditions. We are promoting installations to inject sulfuric acid to safely lower the water pH on a continuous basis to desirable levels. Also featured are custom soil applications of sulfuric acid to improve water penetration and to improve plant growth in high pH calcareous soils. Verdegaal Brothers is also a manufacturer of urea-sulfuric acid fertilizers and a distributor for both soil-applied gypsum and solution-grade gypsum.



**VICAM, A WATERS BUSINESS : BOOTH 311**

Sharon McAvoy • sharon\_mcavoy@waters.com  
34 Maple Street • Milford, MA 01757 • 508.482.3140

VICAM, A Waters business, is dedicated to the development and marketing of USDA- and AOAC-approved food-safety diagnostics for the qualitative and quantitative screening of aflatoxins and all mycotoxins of importance to food and agricultural markets worldwide. VICAM products are used with confidence in more than 100 countries to ensure a safe, wholesome food supply. We guarantee satisfaction with world-class customer service through a global sales and distribution network. For further information, please contact us at vicam@vicam.com or visit our Web site at www.vicam.com.

**VOGEL SALES ENGINEERING : BOOTH 733**

Steve Rocca • steverocca@vogelsaleseng.com  
9521 Folsom Boulevard • Sacramento, CA 95827 • 916.364.8686

Vogel Sales Engineering is a supplier of premium processing and packaging equipment for the California nut industry, including innovative, leading-edge products, such as robotic sorting tables for almonds. Equipment offerings include BM&M Screeners and Sizers, Oliver Gravity Tables, Fortress Metal Detectors, Dura-Pack Pouch Baggers, Premier Tech Packaging Systems, Fanuc Robotic Systems, Taylor Bagging Scales, Fischbein Bag Closing Equipment and many others. Since 1978, Vogel has been dedicated to servicing the customer through expert product and process knowledge, as well as efficient and economic product application.

**WATERFORD IRRIGATION SUPPLY : BOOTH 1108**

John Nydam • jnydam@sbcglobal.net  
P.O.Box 200 • Waterford, CA 95386 • 209.874.1386

WATER!!! The increasing demand for one of our most precious natural resources due to swelling populations and environmental concerns makes having enough water a top priority. Waterford Irrigation Supply, Inc. is here to help you make the most of your water supply. Our engineers have the experience and technology to design a water-efficient irrigation system tailored to your specific needs. Stop by and visit our friendly staff. It'll be worth your time!

**WEISS MCNAIR, LLC : BOOTH 717**

Fred Corona • fcorona@weissmcnair.com  
100 Loren Avenue • Chico, CA 95928 • 530.891.6214, Ext. 219

Weiss McNair has a tradition of manufacturing excellence as the leader in high-quality nut harvesting equipment since 1951. Specifically focused on tractor-pulled and self-propelled harvesters, sweepers and blowers, our equipment efficiently harvests the widest variety of nut crops in the world, including almonds, walnuts, pecans, hazelnuts, macadamia nuts, cashews, chestnuts and jojoba beans. As a market leader, we provide our customers high-quality equipment, backed by superior in-field and factory service. Our equipment is used in all nut growing regions of the world, including Australia, Argentina, Canada, Chile, France, Italy, Israel, Mexico, South Africa, Portugal, Spain and the United States.

**WELLMARK SPONSOR : BOOTH 715**

Ed Fitzharris • edfitzharris@bluerock-inc.com  
415 W. Sunset Road • Barrington, IL 60010 • 847.842.1588

Ant control with Extinguish Ant Bait—Extinguish targets protein-feeding California fire ants, pavement and red, imported fire ants with low use rates that make Extinguish very economical.

**WELLS FARGO INSURANCE : BOOTH 919**

Brandon Stegall • brandon.stegall@wellsfargo.com  
10940 White Rock Road • Rancho Cordova, CA 95670 • 916.589.8029

Wells Fargo Insurance Services is a full-service international insurance brokerage. We help create risk management solutions for our clients and serve the agriculture and food industry with award-winning and claim-solving experience. Wells Fargo Insurance Services has earned a reputation for creativity and hard work, which equals results, not activity!

**WEST-LINK CORPORATION : BOOTH 1034**

Brian Sears • bps@west-link.com  
331 Capitola Avenue, Suite E • Capitola, CA 95010 • 831.477.2840

In business locally for more than 42 years, West-Link Corp. provides quality processing and packaging equipment to the almond industry. Exclusively representing Buhler Sortex Electronic Sorters for sorting in partial to custom turn-key systems and Thermo Fisher Scientific Metal detection and check weigh and x-ray systems. Processing companies, such as RBM Bucket Elevators, Columbia Palletizing, Piab Conveying, American International Pneumatic Separators and Conveying. Packaging companies, such as Pacmac and Toyo baggers. Case erecting, filling, sealing. West-Link has sales, service, parts, all at one company. www.west-link.com

**WESTBRIDGE AGRICULTURE PRODUCTS : BOOTH 903**

Margaret Lewis • margaret@westbridge.com  
1260 Avenida Chelsea • Vista, CA 92081 • 760.599.8855

Westbridge has been a leading manufacturer of specialty liquid fertilizers and crop protection products since 1982. From its Organic TRIGGRR® and Organic BioLink® lineup to its SUNBurst® and Earthtend® brands, Westbridge provides a portfolio of high-quality inputs designed to meet every grower's crop production needs.

**WESTERN FARM PRESS : BOOTH 1207**

Darrah Pierce • dpierce@farmpress.com  
14920 US Hwy 61 • Clarksdale, MS 38614 • 662.627.0126

Western Farm Press is the California almond industry's number one source for production information—in print and online. Western Farm Press prints in-depth articles on almond growers and reports on the latest almond production and marketing information. "Western Farm Press Daily" provides daily electronic information on the latest news of California agriculture. "Tree Nut Farm Press" is a twice monthly e-newsletter that highlights producer practices and the current almond crop information. Two hours of DPR accredited continuing education is available free online at www.westernfarmpress.com in an almond disease management course developed by Western Farm Press and Almond Board of California.

**WESTERN FRUIT GROWERS : BOOTH 806**

Keith Christensen • keith@meistermedia.com  
3509 Coffee Road, Building D-18 • Modesto, CA 95355 • 209.573.8740

We deliver valuable growing information to almond growers the way they like to receive it, through the printed magazine, e-newsletters, forums, website, online videos, webinars and in person.

**WESTERN GROWERS INSURANCE SERVICES : BOOTH 1028**

Kristen Kirsch • kkirsch@wga.com  
17620 Fitch Street • Irvine, CA 92612 • 949.885.2248

Western Growers Insurance Services is a full-service insurance agency providing insurance products and services tailored specifically for the agricultural industry and beyond. We are committed to providing exceptional service, professional advice and high-quality products at competitive prices. Our regional locations throughout California and Arizona allow us to work directly with our customers to provide proactive service that sets us apart from the competition. We specialize in business insurance, employee health benefits, risk management, workers' compensation, safety and loss control services, personal lines and more. Visit us online at www.WGInsuranceServices.com.

**WILKEY INDUSTRIES : BOOTH 1018**

Rich Maliepaard • jack@wilkeyindustries.com  
830 S. Tegner Road • Turlock, CA 95380 • 209.649.1021

Wilkey Industries is a recognized leader in solving complex agricultural and industrial fabrication and service problems through the development and enhancement of processing equipment and our client, vendor and employee relationships. Wilkey specializes in dust control and product separation by means of targeted system aspiration. Our customers enjoy our attention to detail, personal relationships and an exceptional value.

**YARA NORTH AMERICA, INC. : BOOTH 1021**

Jon Collison • jon.collison@yara.com  
10046 Seneca Falls Avenue • Bakersfield, CA 93312 • 661.589.8796

Yara is the world's largest supplier of mineral fertilizer and offers the almond grower a full range of fertilizers sustaining high yield and high quality. Liquid YaraLiva, CN-9 and CAN-17 provide nitrogen and calcium for strong trees yielding high-quality almonds. YaraMila NPKs are ideal to bring new plantings rapidly to full production, and our Potassium Sulfate replenishes the high K-demand of almonds. A complete line of YaraVita micronutrients for foliar or soil application rounds out Yara's portfolio. Fertigation, foliar or dry application, Yara has all the fertilizers needed for first-rate almond production.

Top gun, top dog, top of the heap,  
top banana, top billing, top coat, top dollar,  
top drawer, top flight, top of the class,  
top-end, top-shelf, top of the world,  
Quadris Top.

To prevent profit-robbing plant diseases in vegetables, tree nuts and citrus, start at the top. With the addition of one of the most powerful triazoles on the market, Quadris® Top fungicide has gone from good to great, and truly become the strobilurin of choice. Applied as a foliar spray, Quadris Top is absorbed quickly and provides top-notch, broad-spectrum disease control. The combination of two powerful active ingredients also means that Quadris Top offers sustained peak performance — and you can't top that.





### **SORTING SOLUTIONS FOR THE NUT INDUSTRY**

TOMRA Sorting shares its sorting experience with customers in order to provide the most suitable, cost effective and advanced sorting solutions for the efficient removal of hull, shells, gummies, insect damage, aflatoxine, discolorations and foreign material.

**VISIT US AT BOOTH 427**  
**AND LEARN MORE ABOUT OUR NEW BSI TECHNOLOGY**

[tomrasorting.com](http://tomrasorting.com)  
[food-sorting-us@tomra.com](mailto:food-sorting-us@tomra.com)



Almond Board of California  
1150 Ninth Street, Suite 1500  
Modesto, CA 95354 USA  
T: 209.549.8262  
F: 209.549.8267  
[Almonds.com](http://Almonds.com)

Printed in USA  
© 2013 Almond Board of California

Almond Board of California does not directly endorse the products or events of the sponsors.