



# Export Transportation Panel - Getting Ready for 2017!


December 6, 2016



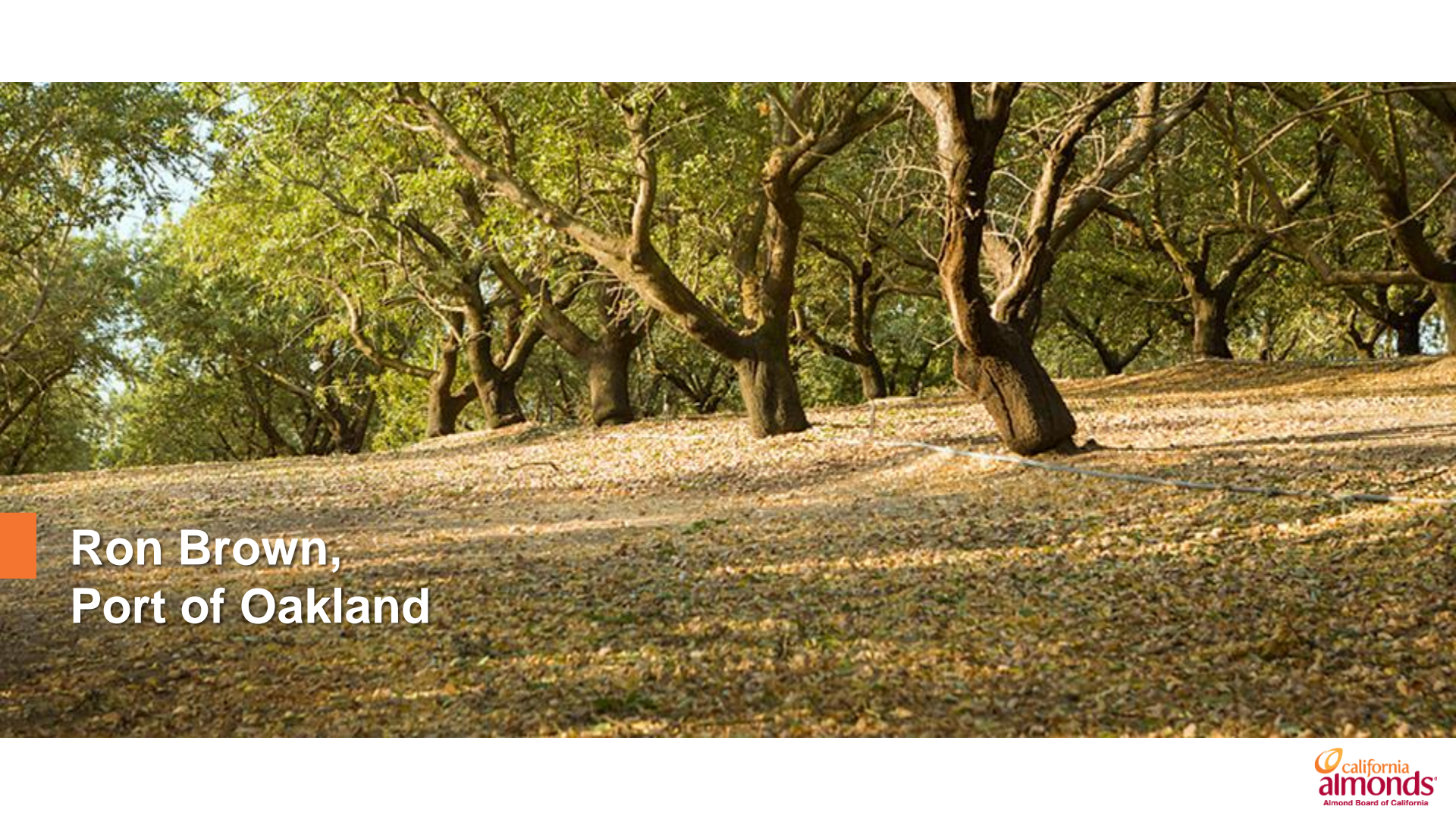
## Export Transportation Panel - Getting Ready for 2017!

- Beth Van Meter, Almond Board of California (Moderator)
- Ron Brown, Port of Oakland
- Susan Ransom, SSA
- Peter Friedmann, AgTC





**Beth Van Meter,  
Almond Board of California**



Ron Brown,  
Port of Oakland



# Port of Oakland Highlights

## Almond Board 2016



**PORT OF OAKLAND  
SEAPORT**

# Port of Oakland Overview

## **The Port of Oakland is a landlord port with**

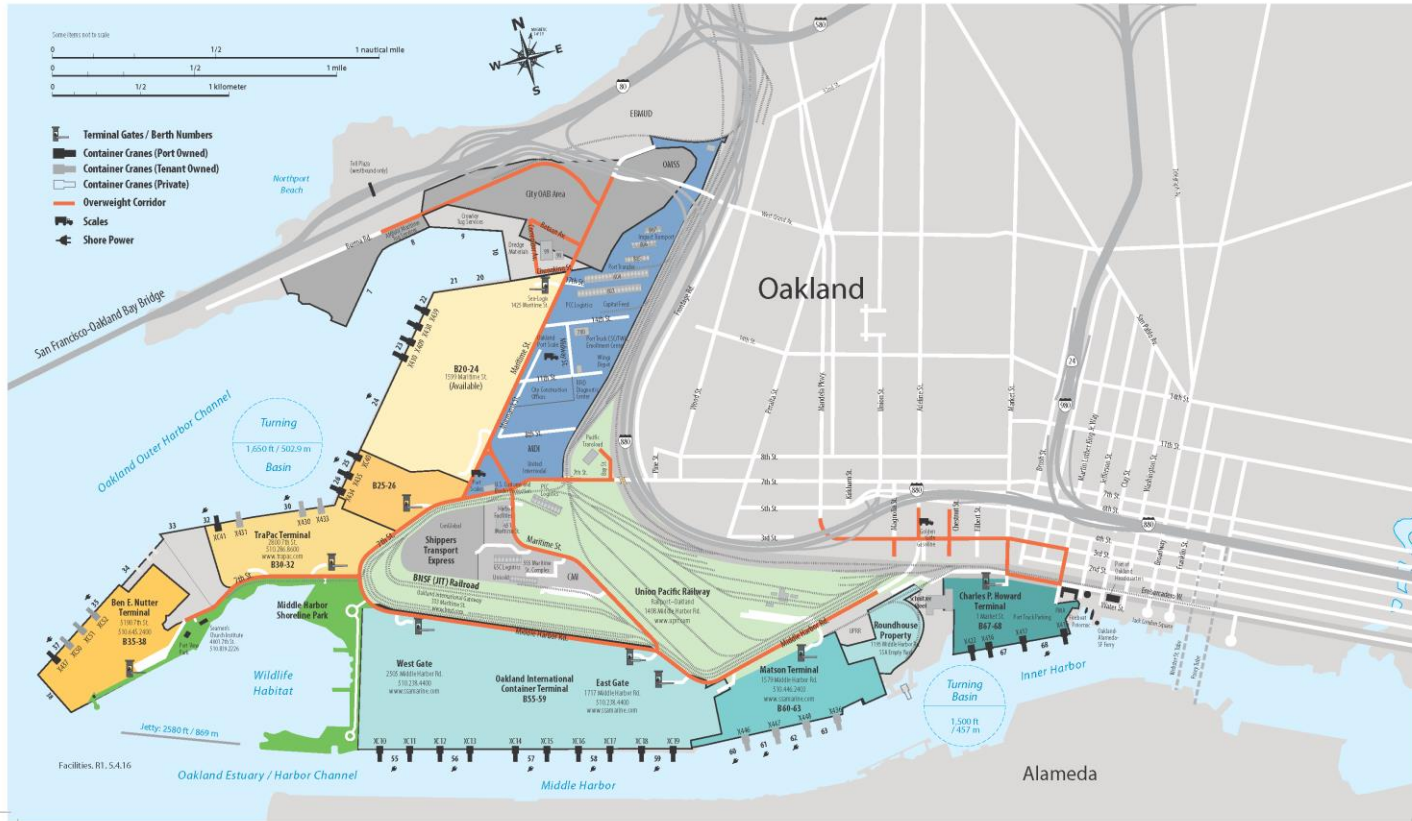
- 6 Marine Terminals, approximately 779 acres
- 3 Marine Terminal Operators: SSA, TraPac, EverPort
- 33 ship-to-shore cranes
- Over 2,000 vessel calls per year with 25 ocean carriers
- Ship navigation channels of -50 foot depth

## **In the Northern California market, the Port of Oakland**

- Handles 99% of the area's containerized goods
- Serves a local market of over 14.5 million consumers
- Reaches a regional market of over 37 million consumers

# Port

# SEAPORT FACILITIES



	2015	2014	2013	2012	2011
Throughput (TEU)	2,277,521	2,394,066	2,346,564	2,343,903	2,342,526
Percent Change	-4.9%	2.0%	0.1%	0.1%	-

# Top Five Commodities & Trading Partners

## Import

- 1) Beverages and Spirits
- 2) Miscellaneous
- 3) Furniture
- 4) Glass and Glassware
- 5) Plastics

## Import

- 1) China
- 2) Taiwan
- 3) Thailand
- 4) Australia
- 5) Hong Kong

## Export

- 1) Wood Pulp
- 2) Fruits and Nuts
- 3) Beverages and Spirits
- 4) Meats
- 5) Cereals

## Export

- 1) China
- 2) Japan
- 3) South Korea
- 4) Hong Kong
- 5) Taiwan



# Investing in the Port's Future

## Seaport Investments

- 1) Outer Harbor Intermodal Terminal – Phase 1 (OHIT)
- 2) Seaport Logistics Complex: Developing trans-load, cross-dock facilities and distribution center/warehouse
- 3) Cool Port: temperature controlled logistics refrigerated warehouse/distribution center of 283,000 sq. ft.
- 4) Grain trans-load facilities
- 5) Increasing the height of ship-to-shore cranes by 26' at OICT to be “big ship” ready in 2017

# Oakland Harbor Intermodal Terminal (Phase 1)

- \$100 million investment to be fully completed late 2016
- 5 Manifest yard tracks
- 8 support yard tracks
- 39,000' of track
- Capacity for up to 4 trains/day of 200 cars each (2 in-/2 out-bound)



First test train of 100 hopper cars arrived July 7 with grain from US Midwest for trans-load into 40' containers for export to Far East.

# Seaport Logistics Complex: Trans-load, Cross-dock and Distribution Center

- Development partnership with CenterPoint Properties
- Close proximity to marine and rail terminals
- Trans-load 40' ocean containers to/from 53' domestic equipment
- Import shipment deconsolidation
- Import/export cross-dock opportunity
- Use of Port's heavyweight shipping corridor increases 40' container capacity by 25%

# Seaport Logistics Complex: Trans-load, Cross-dock and Distribution Center



**PORT OF OAKLAND  
SEAPORT**

# Cool Port: Temperature Controlled Logistics

- Lease signed with Lineage Logistics/Dreisbach Enterprises October 2015
- Phase 1 development:
  - ✓ 25 acres
  - ✓ 283,000 sq. ft. facility
  - ✓ 11,200 linear feet of new rail track
- Located within the Port's heavy weight corridor
- Annual throughput projected of 27,000 containers
- Construction begins late 2016

# Temperature Controlled Logistics: Proposed Facility Site Plan

- Construction planned to begin late 2016
- Operations anticipated to begin early 2018





Susan Ransom,  
SSA

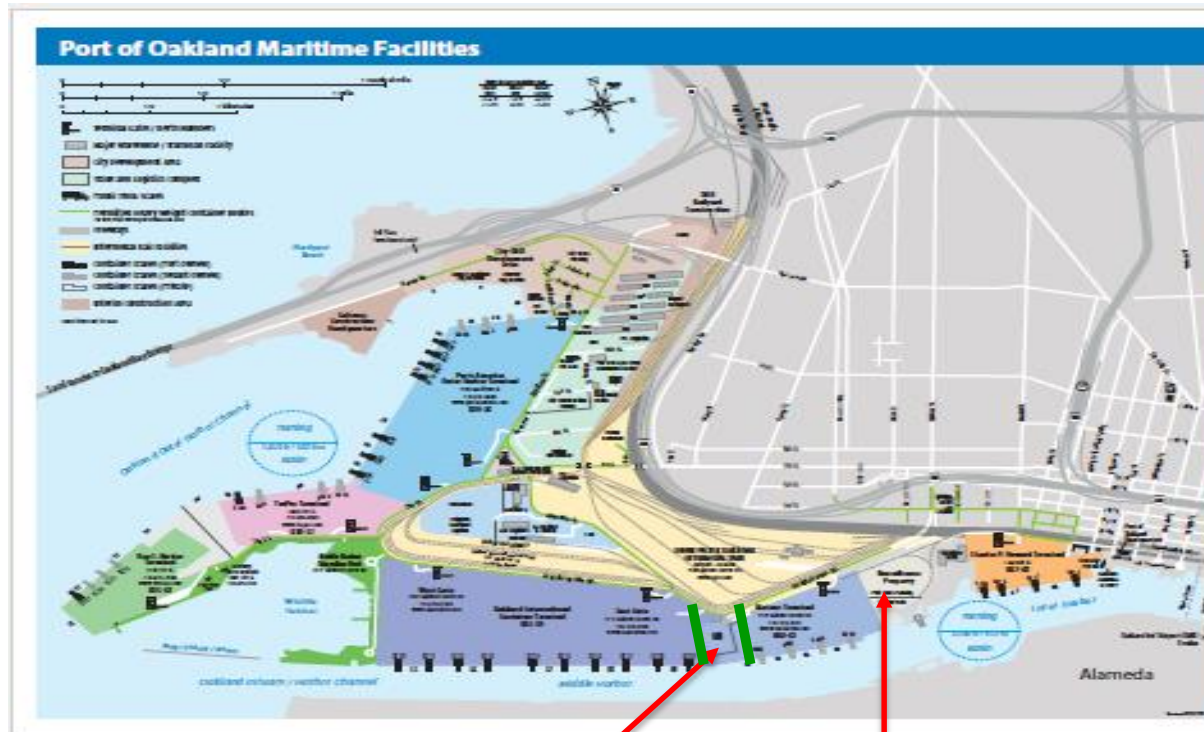
# Oakland International Container Terminal



SSATerminals



# Port of Oakland Map



Expanded  
13 acres

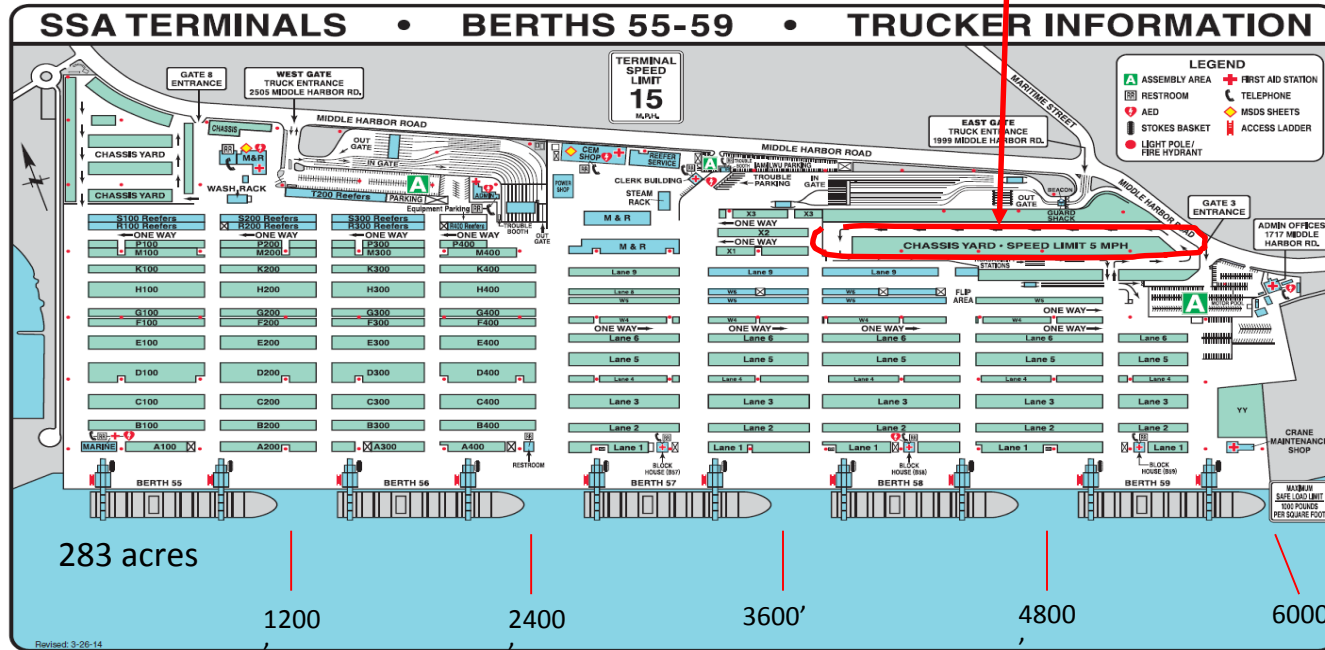
Opened an off  
dock Empty Yard  
19 acres



SSATerminals

# OICT Terminal Map

New empty/export area.  
Relocated chassis pit



- Approx. 70% containerized volume thru Oakland
- Avg. 5,500 – 6,000 gate moves daily both shifts
- Avg. 25 vessels weekly



# OICT Updates

## Extended Night Gates

Monday – Thursday Nights

- 6:00 p.m. – 3:00 a.m.
- All transactions
- Hired Terminal Mgr./Chief Clerk / Labor
- Benefits
  - Spread trucks out over nine shifts
  - Less terminal activity at night
  - Improved truck turns
  - Minimal freeway traffic at night

## \$30 Terminal Surcharge

- All Imports and Exports
- Helps with costs associated with night gate
- Costs transparent with the Port of Oakland
- 90 day notification of any fee change
  - No change to date

## Terminal Equipment

- Purchased 6 top picks /3 side picks

## Appointment System

- Trans lanes 2, 6, B & K
- Expedites dual transactions
- Relief Trans

## Shippers Transport Import Program

- Move avg. 300 imports a night

## BNSF Rail

- Avg. empty return 200 – 300 night



# Roundhouse Empty Yard – May 4, 2016

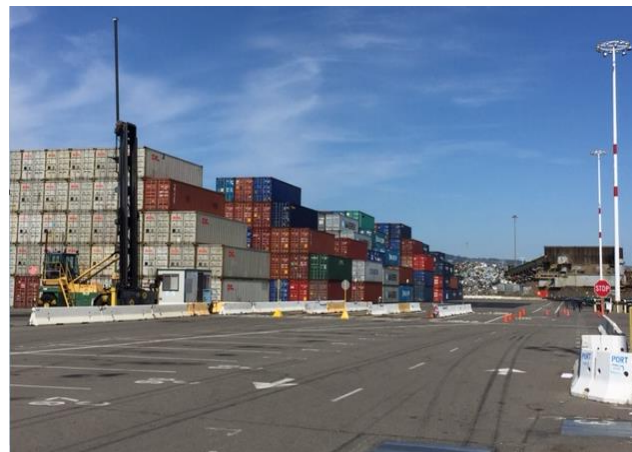


- Separate in / out gate
- Empty drop and pick (Dry only)
- Chassis available
- Dual Transaction capability
  - Picks generated to main terminal
- Avg. 400 /daily transactions

7:00 a.m. – 4:30 p.m.

Daily transaction notifications send  
Via Emodal and posted at

<https://B58.Tideworks.com/Forecast>



# Pre Arrival Implementation (AIG) – Nov 7th

- Emodal based program
- Transactions entered prior to truck arriving at the terminal
- Expedites trucks at the in gate/queues

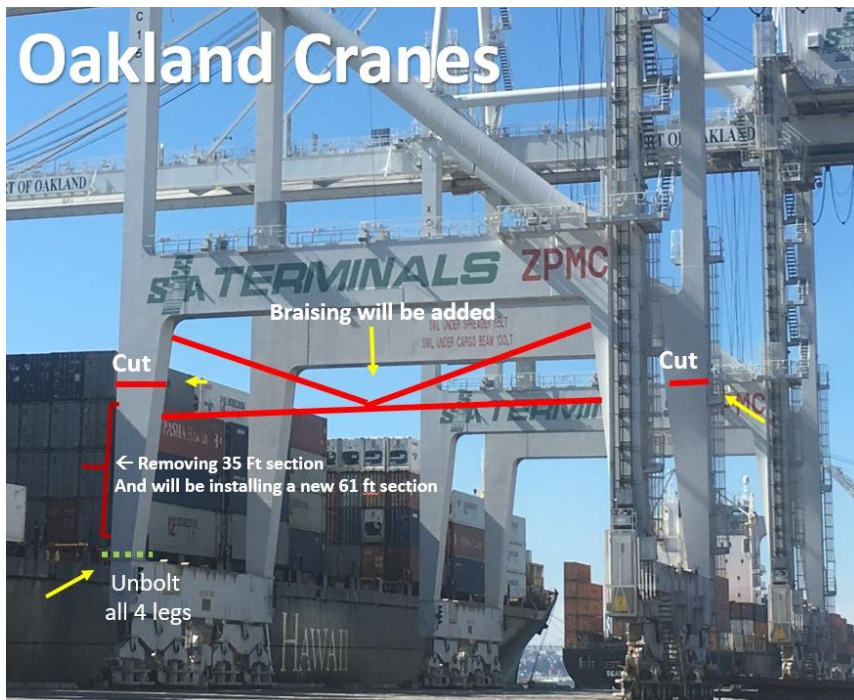


# Today's OICT

- Street wait times minimized
  - Dray Q ([www.drayq.com](http://www.drayq.com))
- Harbor Truckers getting in and out quicker
- Reduced and/or eliminated trucker wait time charges, customers paying less
- More flexibility to customers and truckers to expedite their cargo
- Positive feedback from industry



# Future OICT



- Raising four cranes 26 ft
- Accommodate tiers of 8-9
- Begin date: Jan, 2017



# Shipper's Transport French Camp Depot

## Program Outline

- Runs 100% night operation for movement to and from terminal
- Free Flow import containers from OICT to depot
  - Importer takes delivery at depot or arranges STE to dray
- Empty return to depot
- Match empties to export bookings
- 24/7 Inland operation
- All in rates

For additional information please contact:

Paul Clouse, Marketing Director (510) 604-4483

[Paul.Clouse@shipperstransport.com](mailto:Paul.Clouse@shipperstransport.com)





# OICT Customers

## Shipping Lines

ANL	MOL
APL	NYK Line
CMA-CGM	OOCL
Cosco	PIL
Evergreen	Pasha
Go Shipping	Polynesian
Hamburg Sud	United Arab
Hapag Lloyd	US Lines
Hyundai	Wan Hai
K-Line	Yang Ming
Maersk	Zim
MSC	



## Chassis Providers

BACP (Flexi), TRAC , DCLI



Thank You...



SSATerminals

# Peter Friedmann, AgTC



A close-up photograph of a glass jar filled with almonds. In the foreground, a small white dish contains a dollop of almond butter. The background is a warm, golden-yellow color.

# Questions?

**Thank You!!!**

